

Works Underway Spring/Summer 2014



Denny Substation

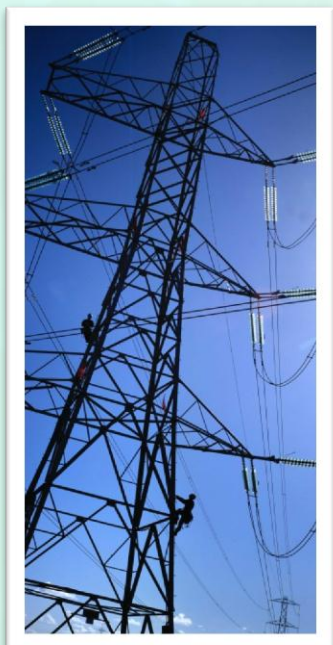
The environmental team will continue work on the management of the peatland habitat at Torwood Mire, adjacent to the substation site. This will involve small teams of environmental professionals on site conducting visual surveys and non-invasive testing.

Contractors will be on-site installing electrical and mechanical infrastructure on the existing concrete platform. Electrical apparatus will be arriving on site through the spring and summer of 2014, sometimes on large, specially adapted transporters under agreed traffic management. This apparatus will be unloaded and assembled at the platform with the process being completed by the end of 2014.



The formation of the overhead line towers will see concrete foundations being laid, these involve deep foundation concrete piles being delivered to the site during the first half of 2014, once installed steel lattice towers will be erected in sections. It is intended that this phase of construction will be completed by late 2014.

Between Denny and Carbrook Mains / Eastern Villages: Carbrook Mains (A9) and Manor Powis (A907)



Environmental and technical surveys will be carried out at tower locations and access track locations along the route of the line. This will involve small groups of professionals taking walking access or, where possible limited vehicular access to sites and performing a range of surveys, often utilising specialist surveying equipment.

Fencing contractors will be accessing sites along this section of the route for the construction of temporary wooden fencing which will demarcate site areas at or near tower locations. Site compounds or fenced off areas have been planned in consultation with Local Authority access officers to, where possible, prevent disturbance to public rights of way or core paths.

Works Underway Spring/Summer 2014



Between Denny and Carbrook Mains / Eastern Villages: Carbrook Mains (A9) and Manor Powis (A907)

Dedicated construction access tracks, together with improvement to the public road network started in September 2013 and will continue in 2014. These roads will be constructed in stone which will be transported to site in heavy goods vehicles. Access tracks, once constructed will allow vehicles and materials to be transported between sites while minimising disruption to other road users in the wider local area.

Tower foundations will be installed by transporting concrete to site and pouring concrete bases upon which steel towers will be constructed in sections using a crane. It is intended that work on these bases and the erection of towers will begin from July 2014.

Between Manor Powis and the Wharry Burn

Work is continuing on surveys required to facilitate the delivery of construction access roads and public road improvements. Work to the local distribution networks is currently underway and will continue into the summer months of 2014.

Work on the overhead line itself and the larger physical elements of this section of the project are intended to follow in late 2014 and early 2015 with the initial works being the construction of access tracks from the Wharry Burn to Dumyat. This element is intended to be delivered towards the end of the overall project.

