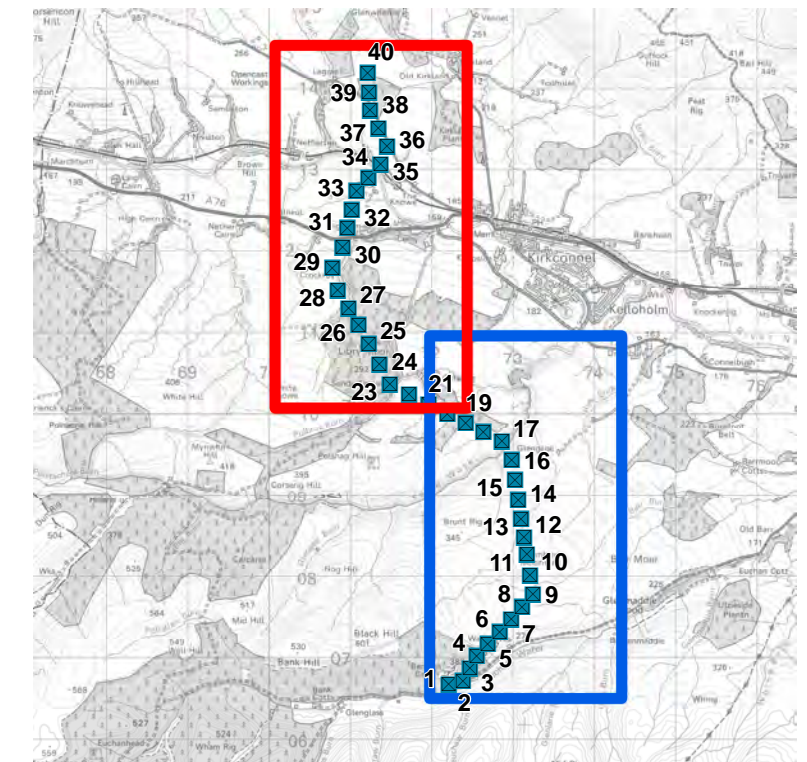
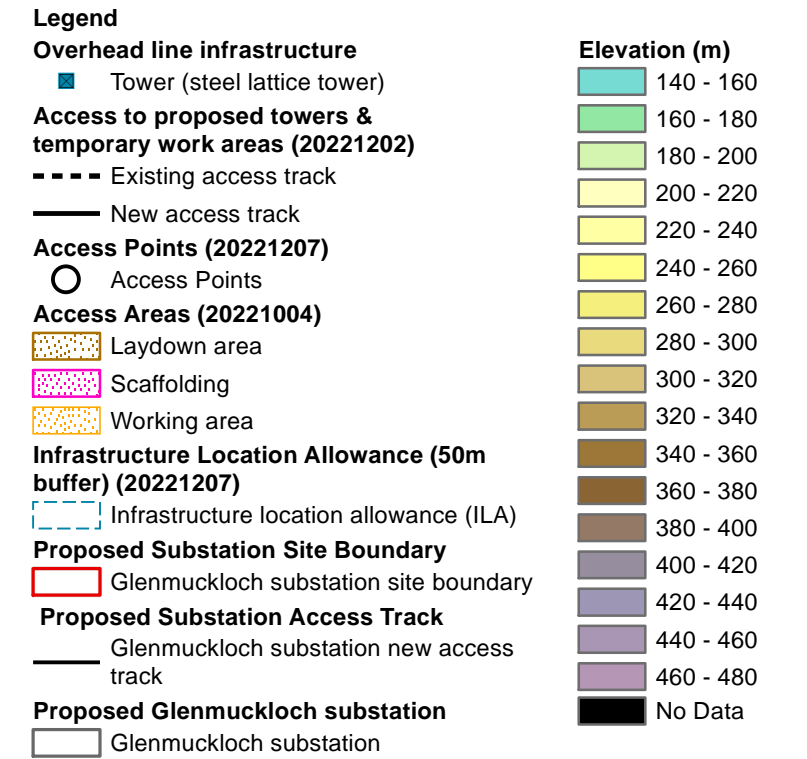
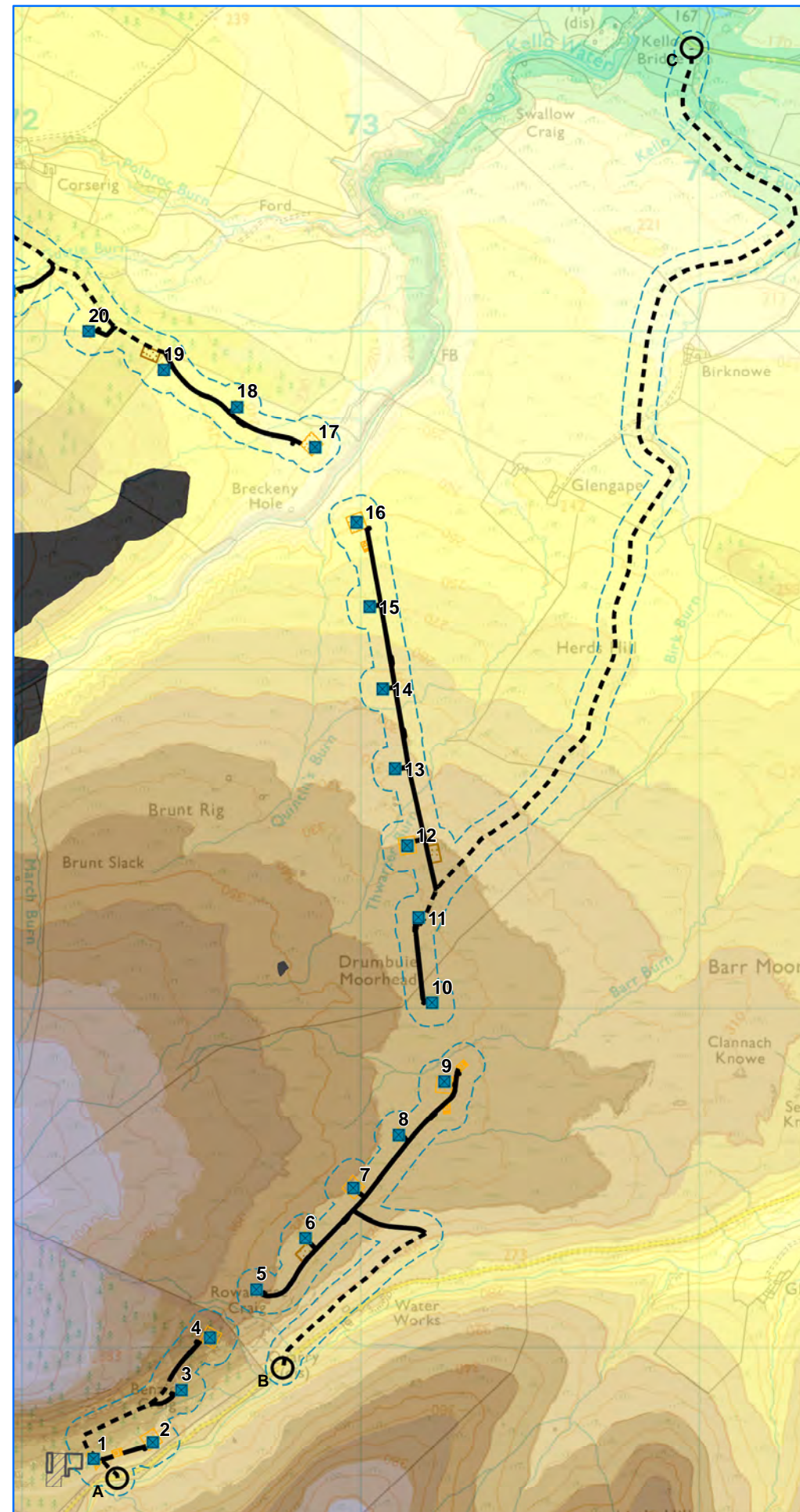
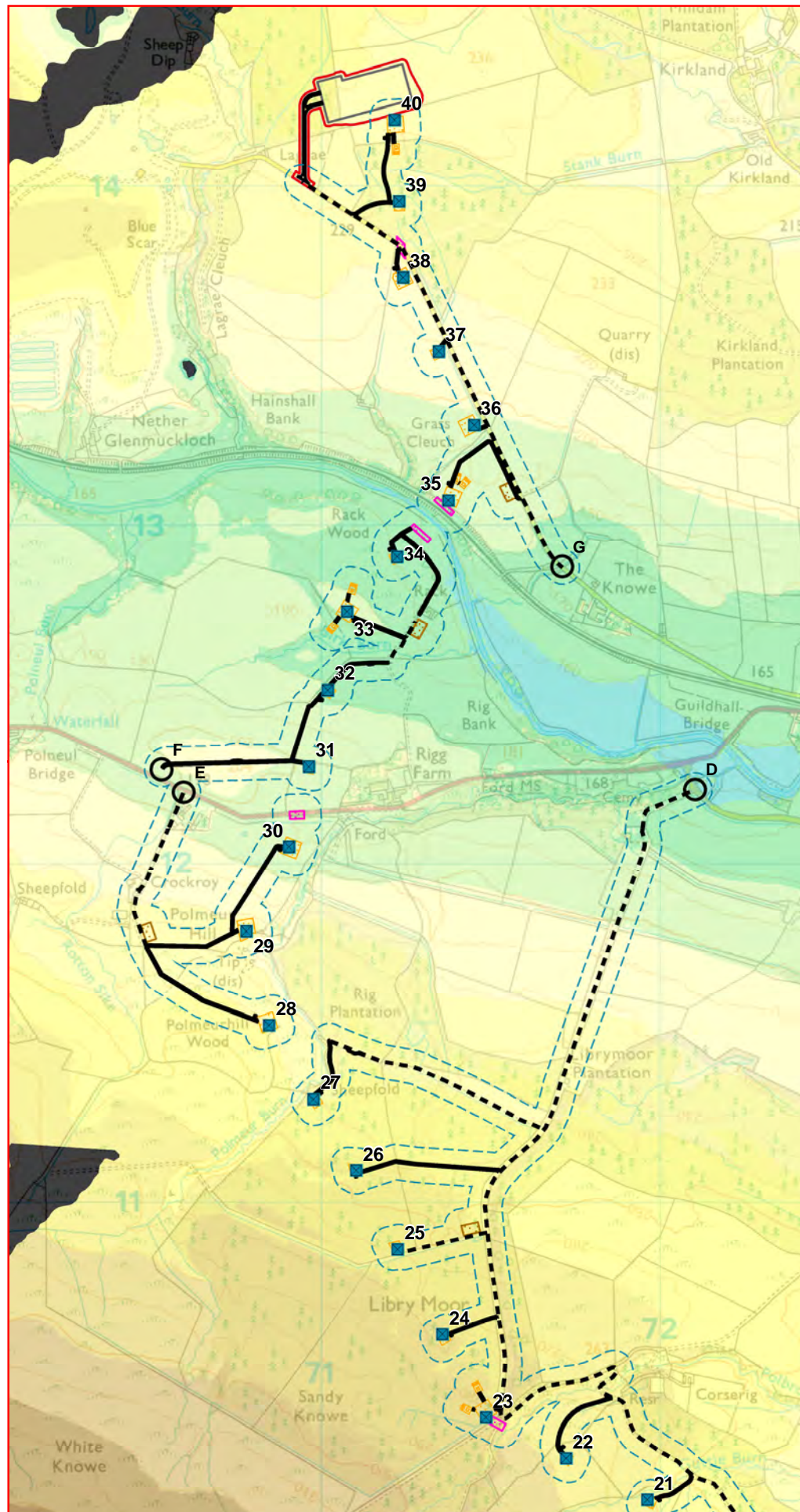
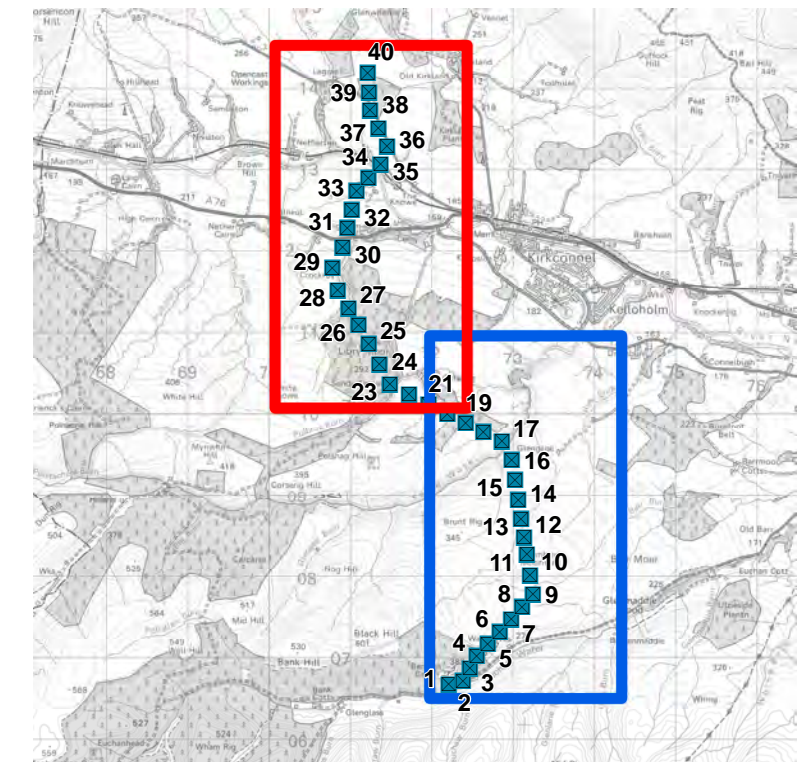
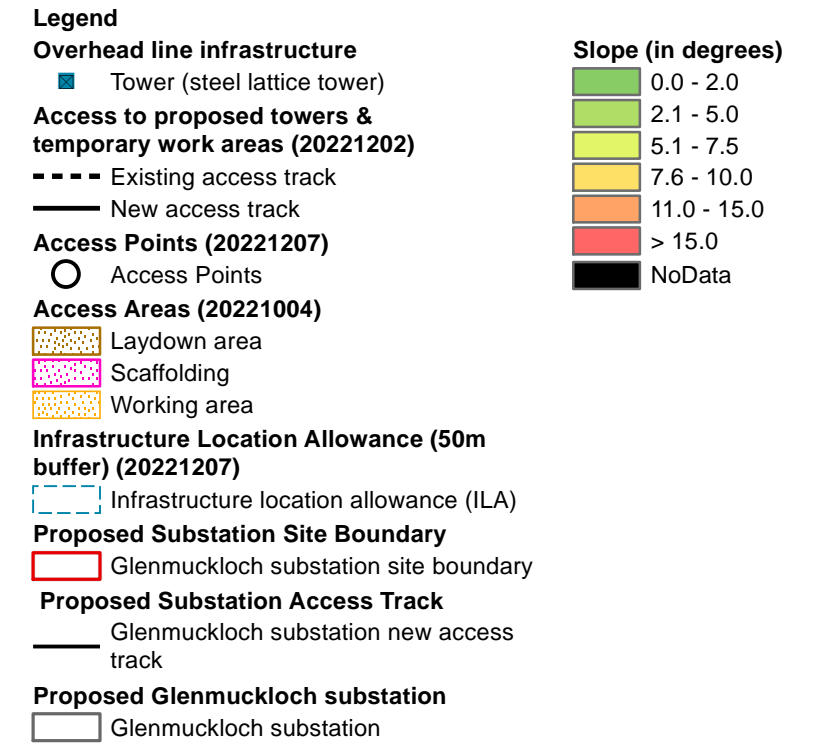
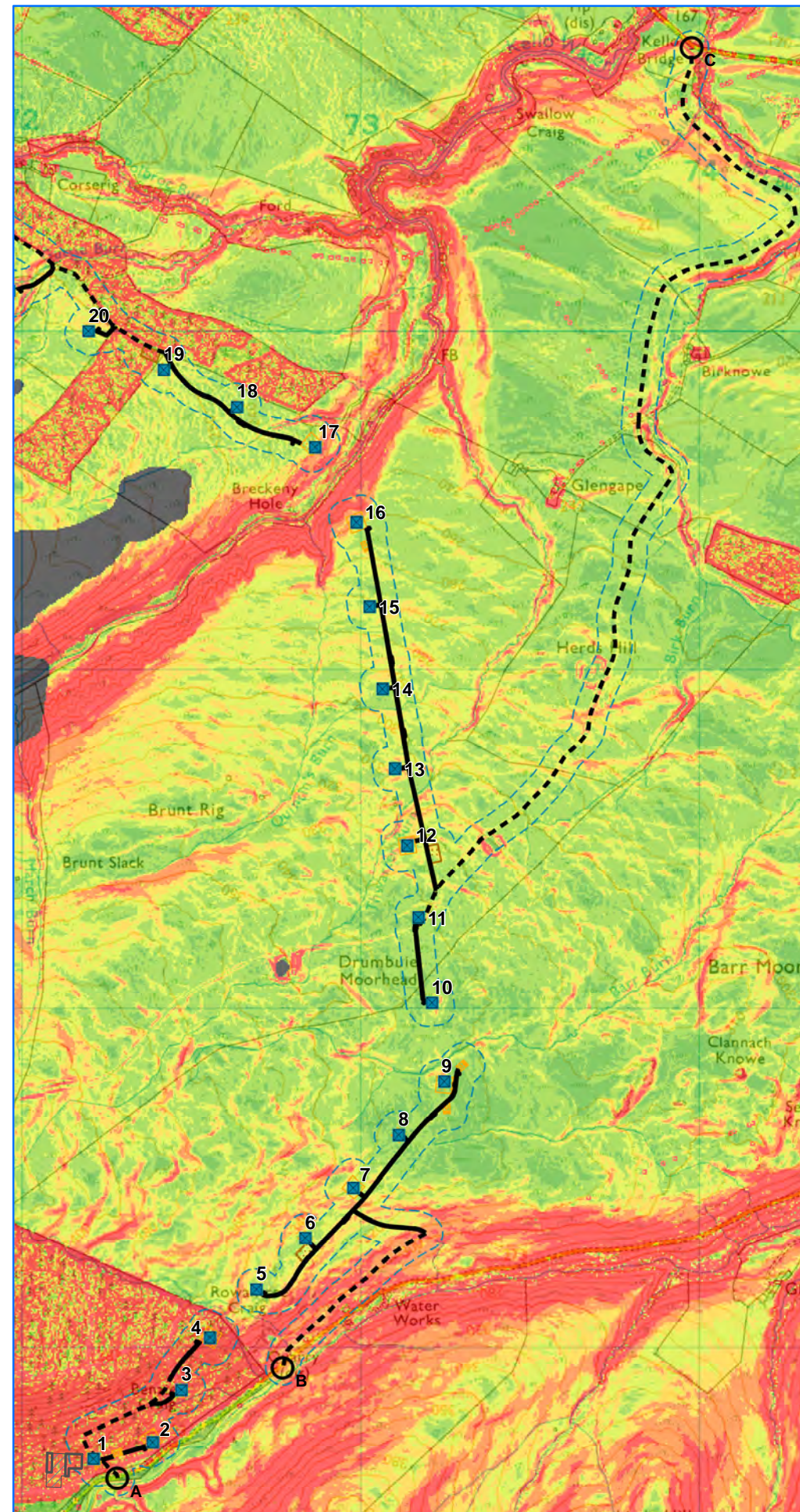
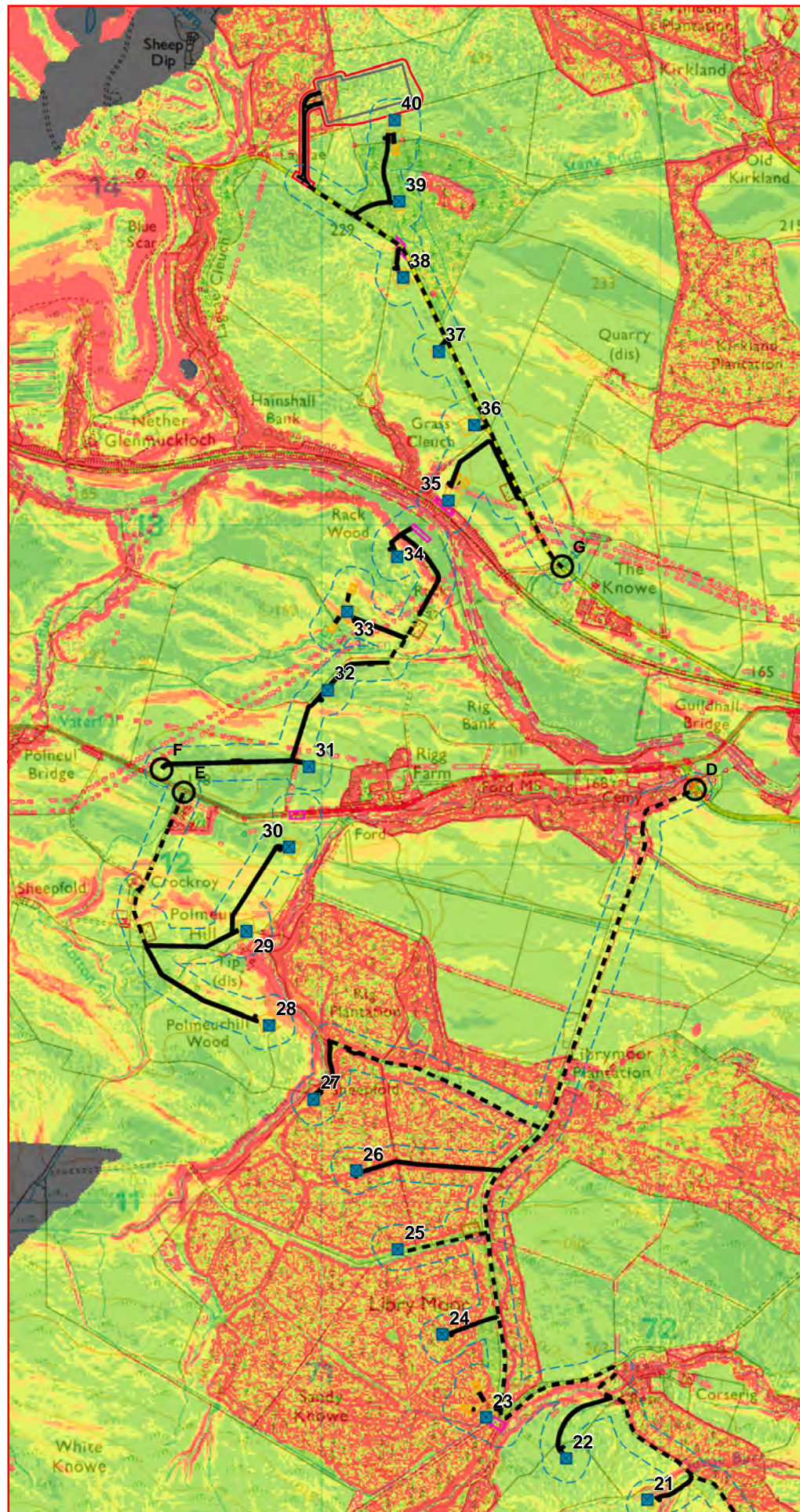


Figure 7.5.1 - Elevation



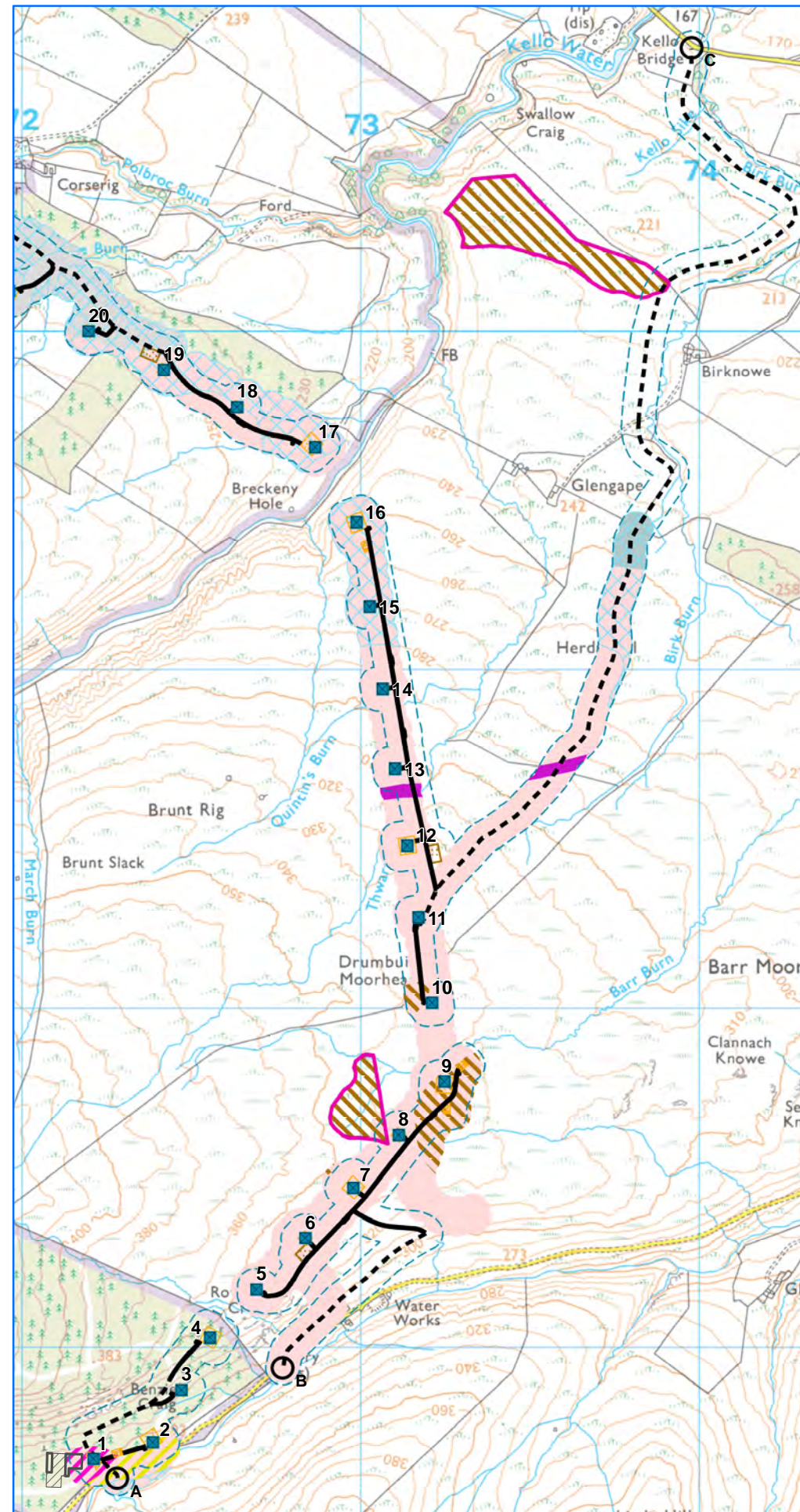
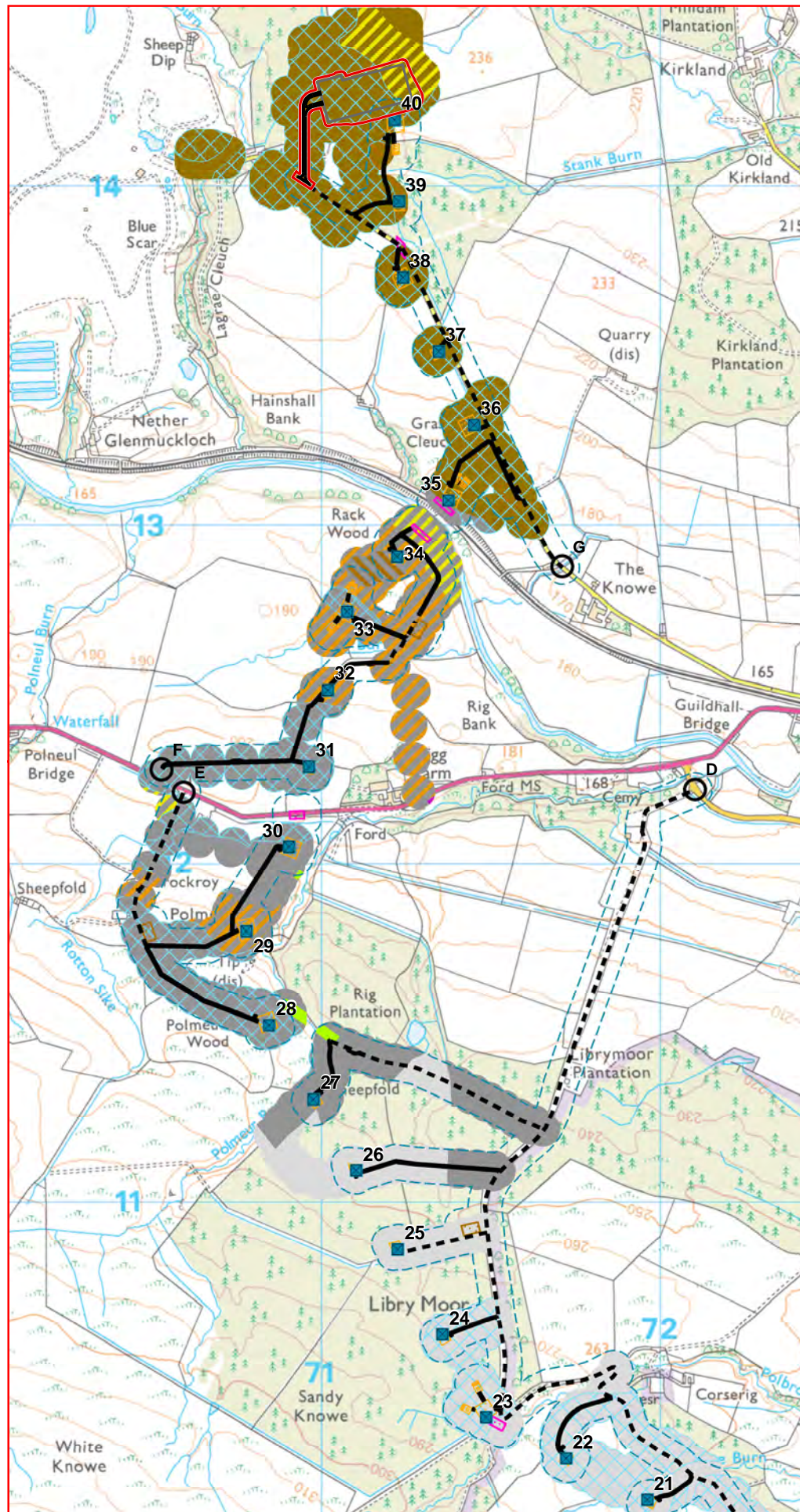
Map scale 1:17,500 @ A3

Figure 7.5.2 - Slope



Map scale 1:17,500 @ A3

Figure 7.5.3 - Bedrock and Superficial Geology



**Legend**

Refer to Figure 1 for infrastructure symbology

**Designations (on inset map)**

Polhote and Polneul Burns SSSI

**Superficial Geology**

Alluvium - Silt, sand and gravel

Glaciofluvial Deposits - Gravel, sand and silt

Hummocky (moundy) Glacial Deposits - Diamicton, sand and gravel

Peat - Class 1 Peat

Peat - Peat

Till, Devensian - Diamicton

**Bedrock Geology**

Clackmannan Group - Sandstone, Siltstone And

Kirkcolm Formation - Wacke

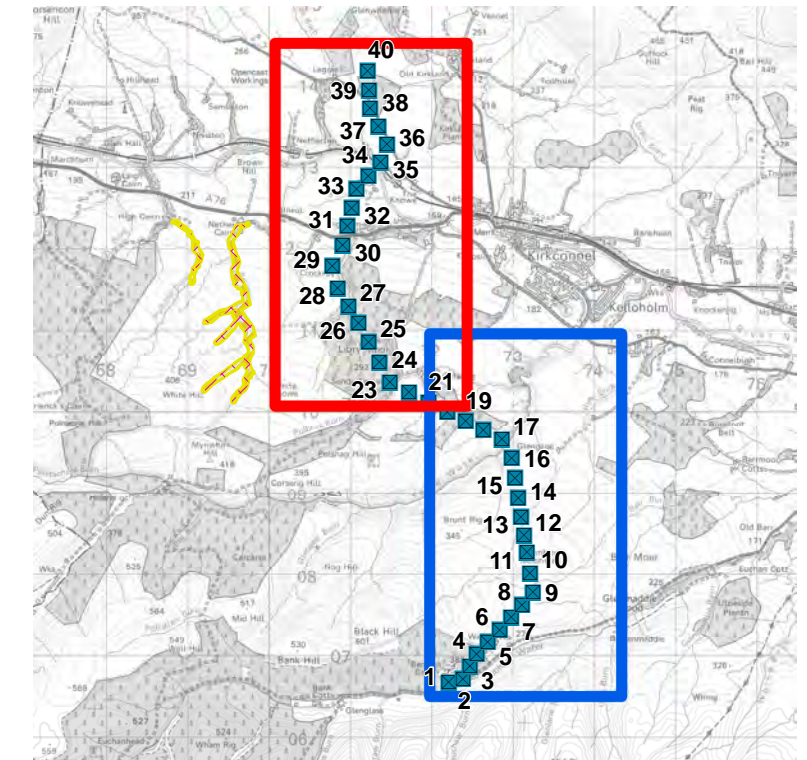
Poltallan Member - Volcaniclastic-Breccia

Scottish Lower Coal Measures Formation - Sedimentary Rock Cycles, Coal Measure Type

Scottish Middle Coal Measures Formation - Sedimentary Rock Cycles, Coal Measure Type

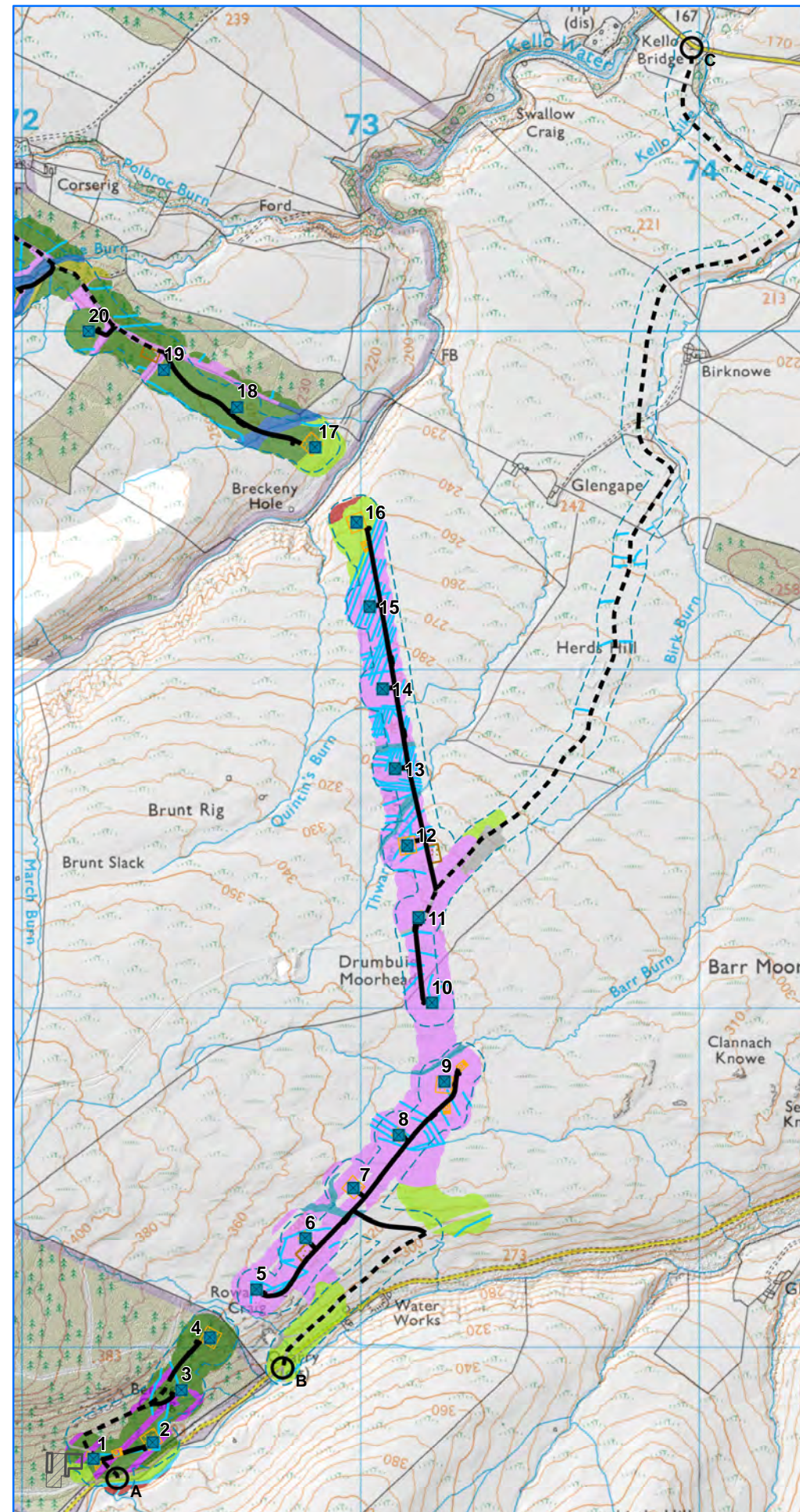
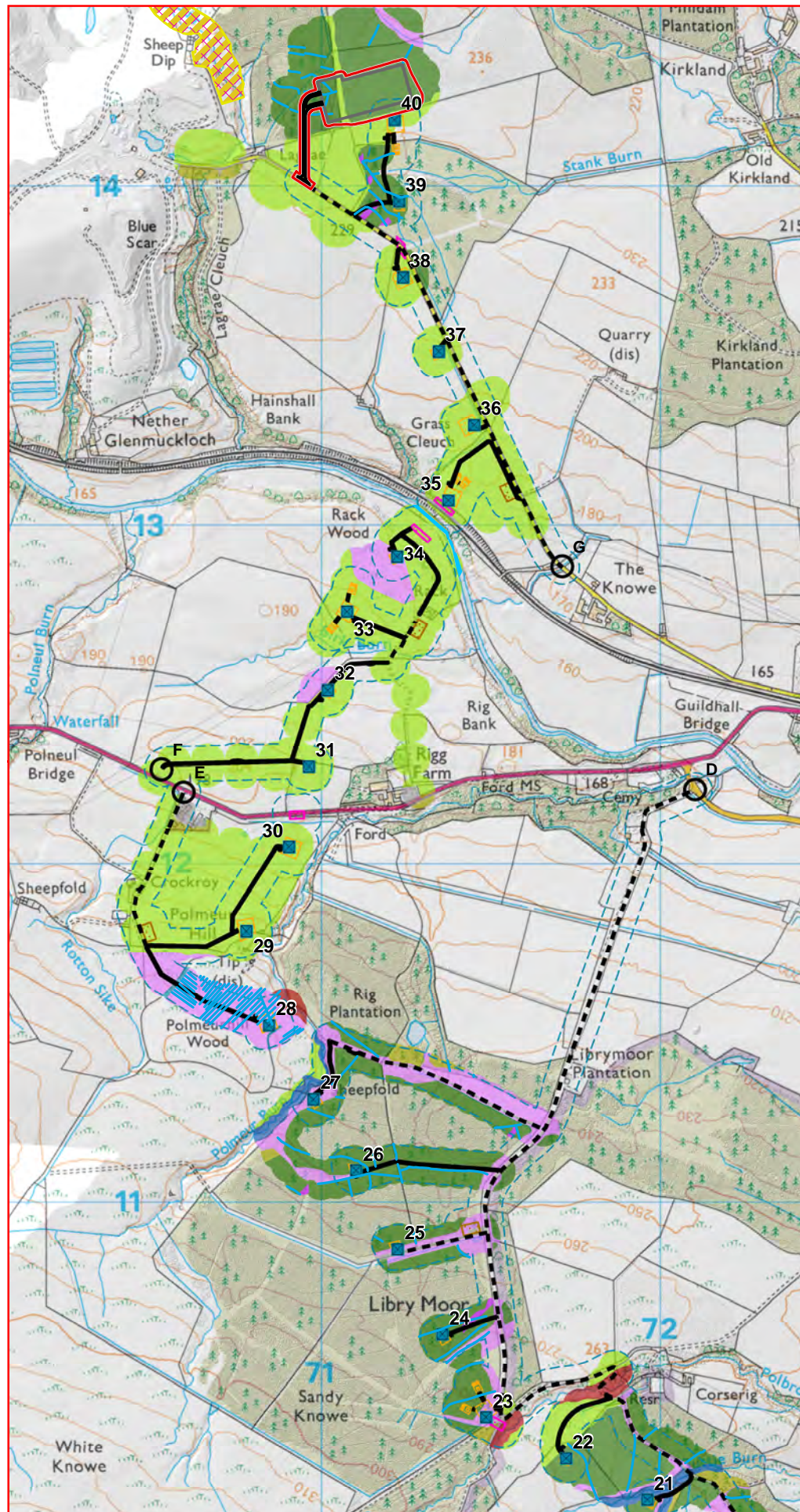
Scottish Upper Coal Measures Formation - Sedimentary Rock Cycles, Coal Measure Type

Unnamed Igneous Intrusion Of Unknown Age -



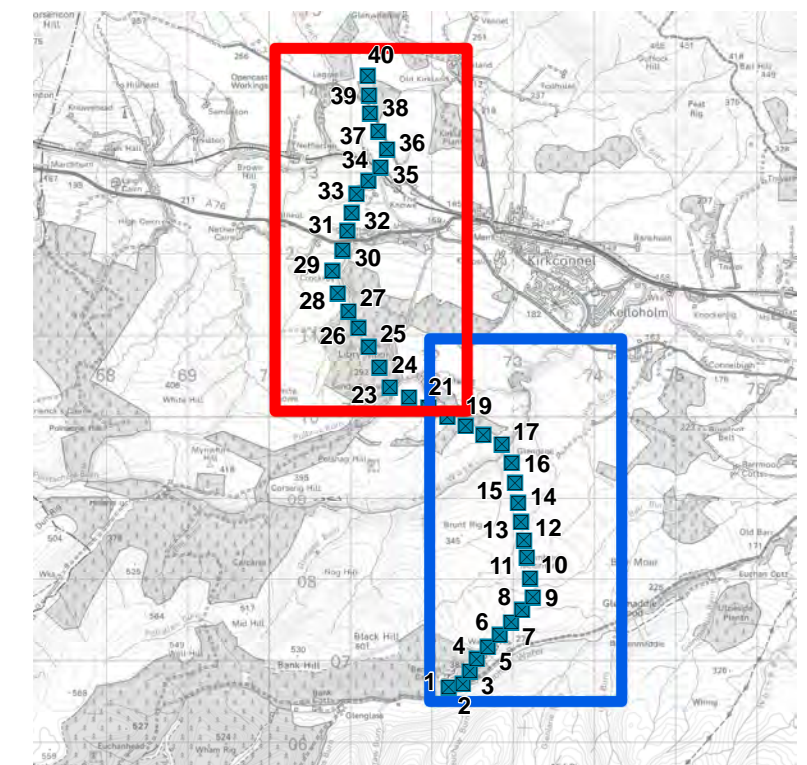
Map scale 1:17,500 @ A3

Figure 7.5.4 - Geomorphology, Hydrology and Land Use



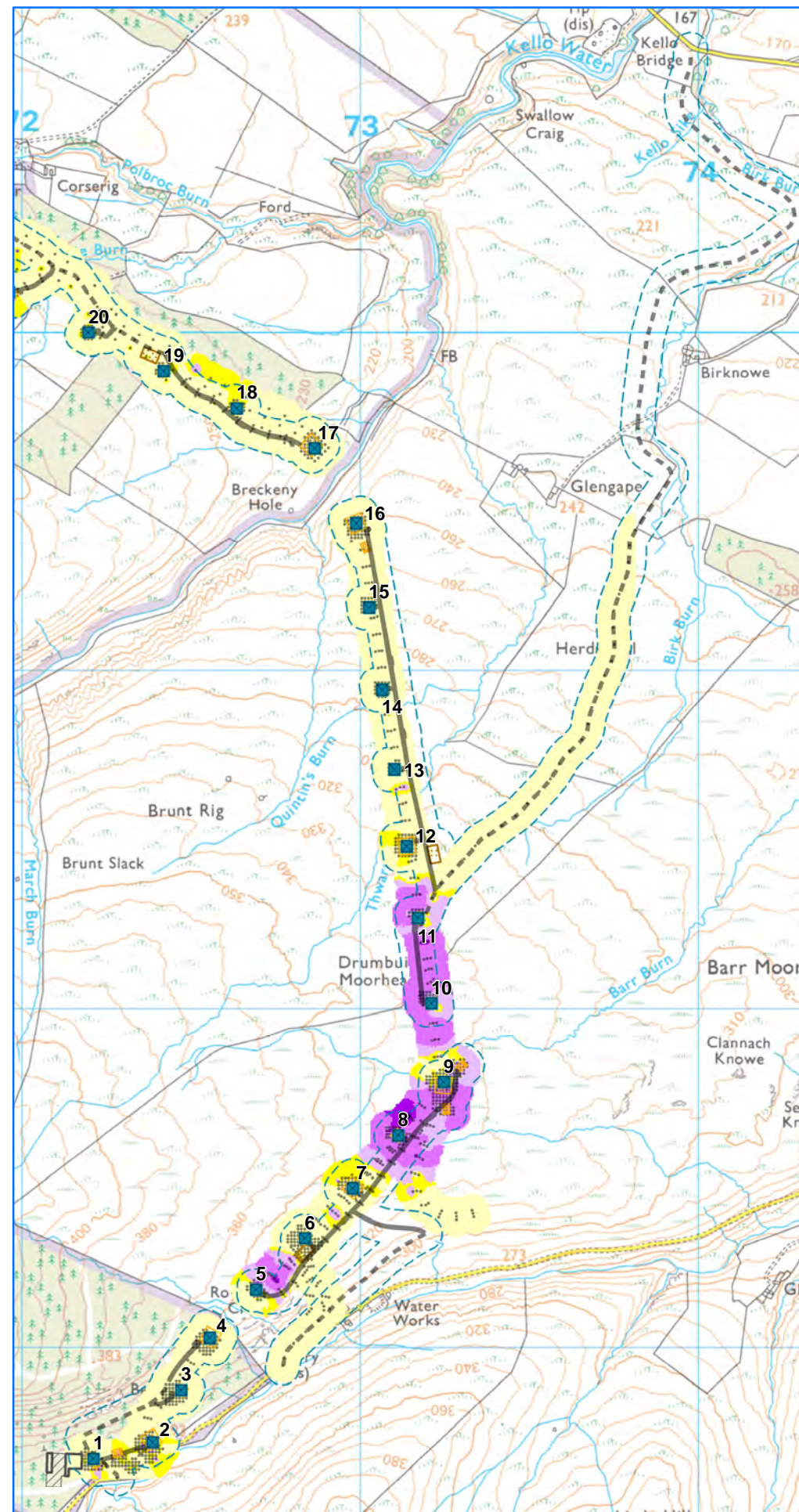
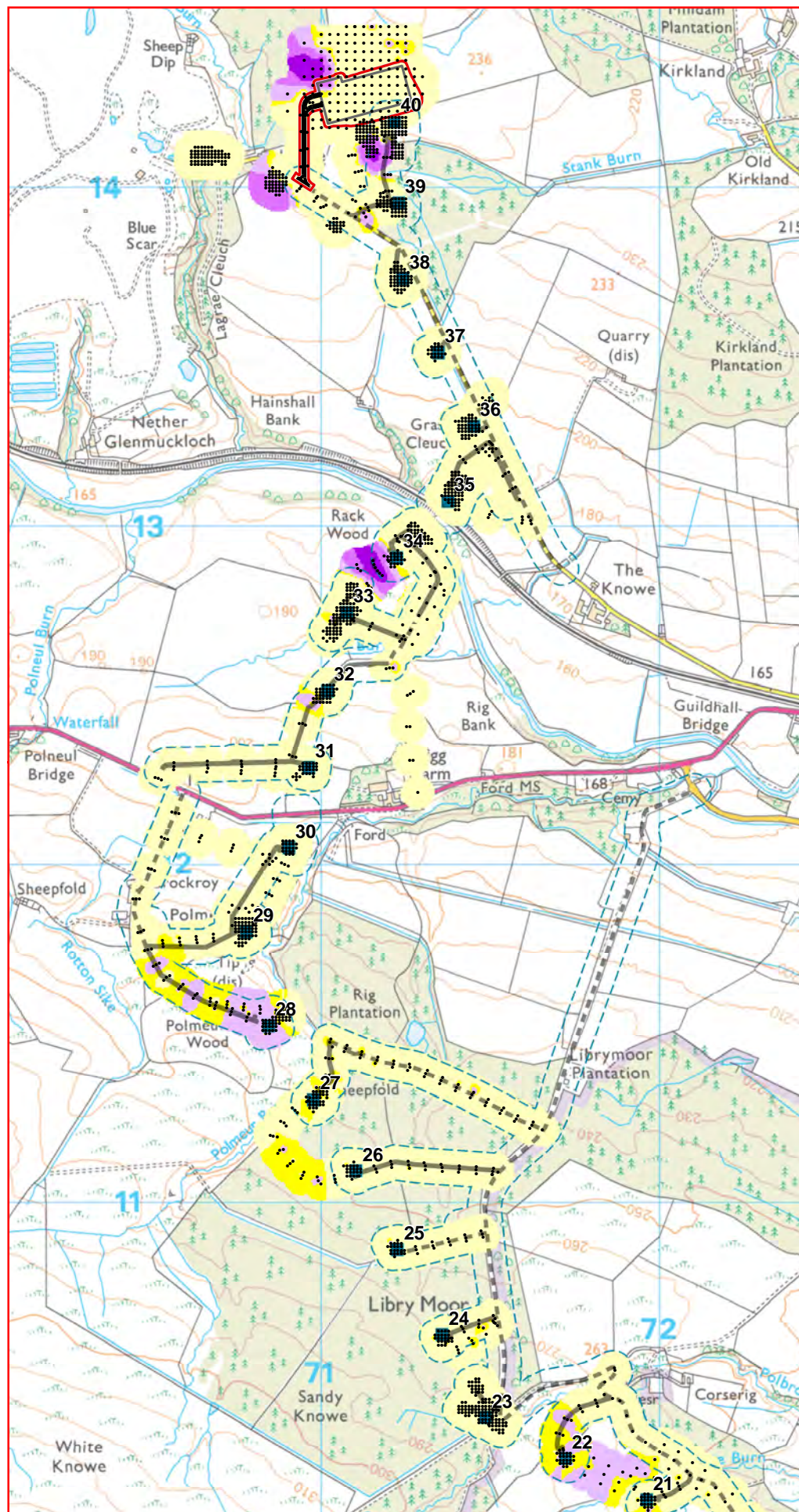
**Legend**  
Refer to Figure 1 for infrastructure symbology

- Designations**
- Lagrae Burn SSSI
- Hydrology**
- Drains
  - River
- Geomorphology and Land Use**
- Gully
  - Valley
  - Bluff
  - Planar peatland
  - Felled - downslope
  - Forested - downslope
  - Forested - oblique
  - Riparian woodland
  - Grassland - planar
  - Made ground



Map scale 1:17,500 @ A3

Figure 7.5.5 - Peat Depth

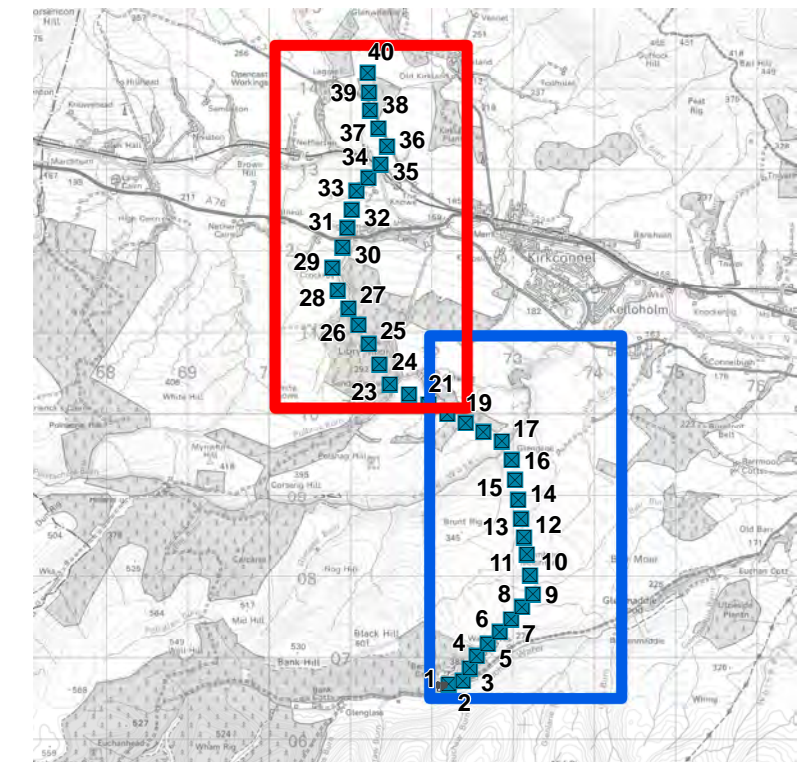


**Legend**  
Refer to Figure 1 for infrastructure symbology

• Probe Locations (All)

**Peat Depth (cm)**

- 0 - 35
- 35 - 50
- 50 - 100
- 100 - 200
- 200 - 300
- 300 - 400



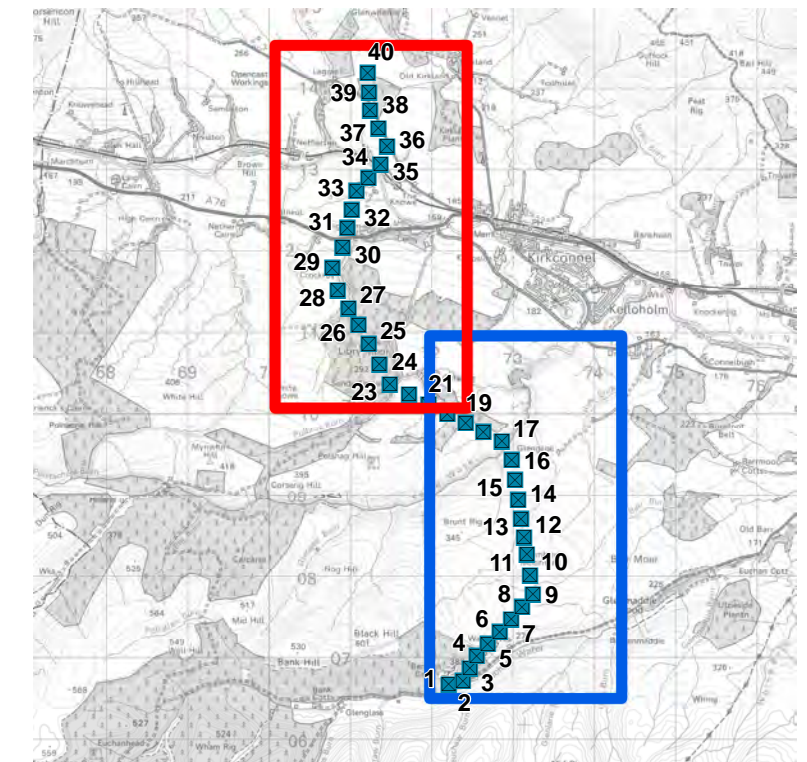
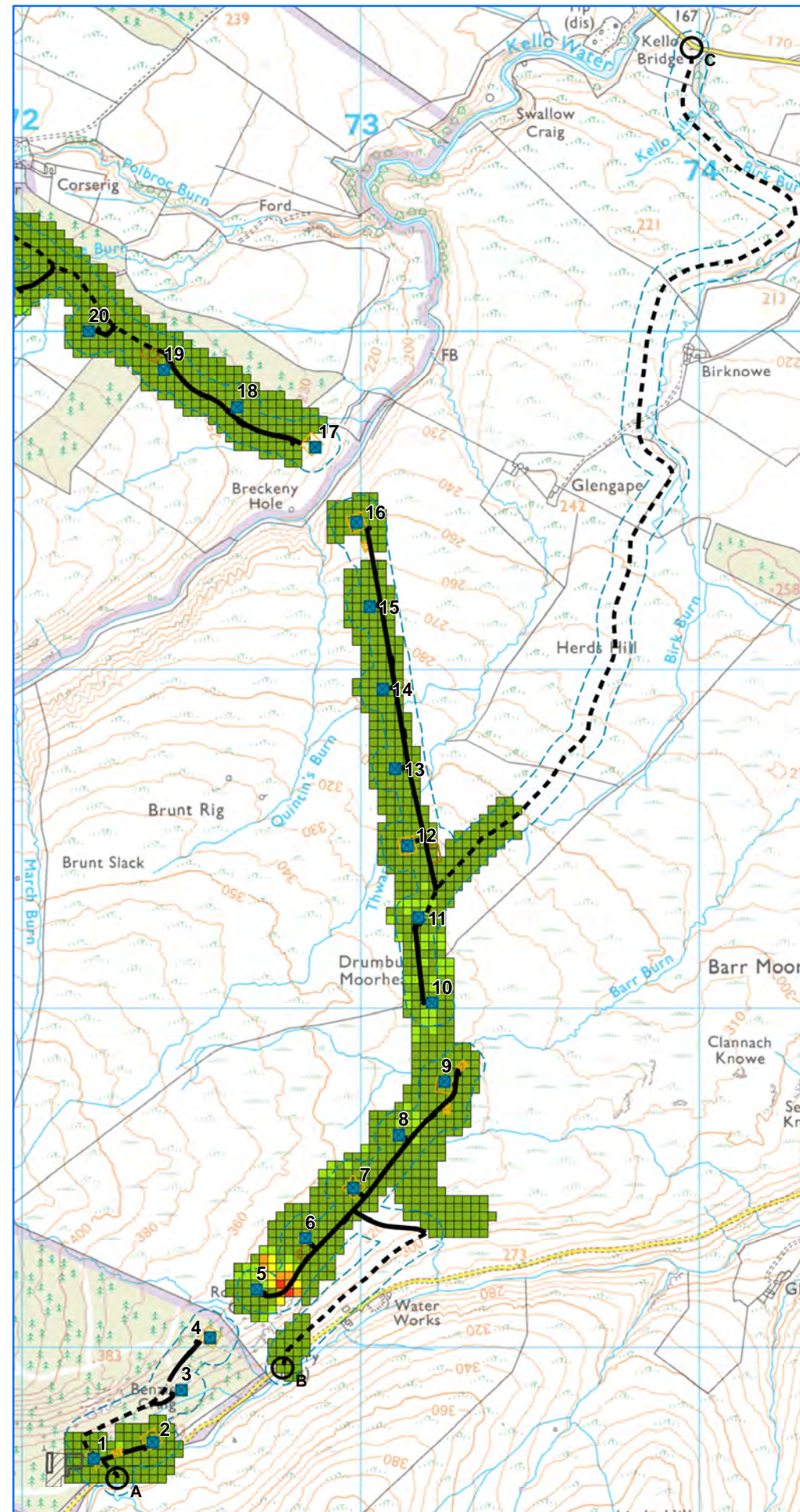
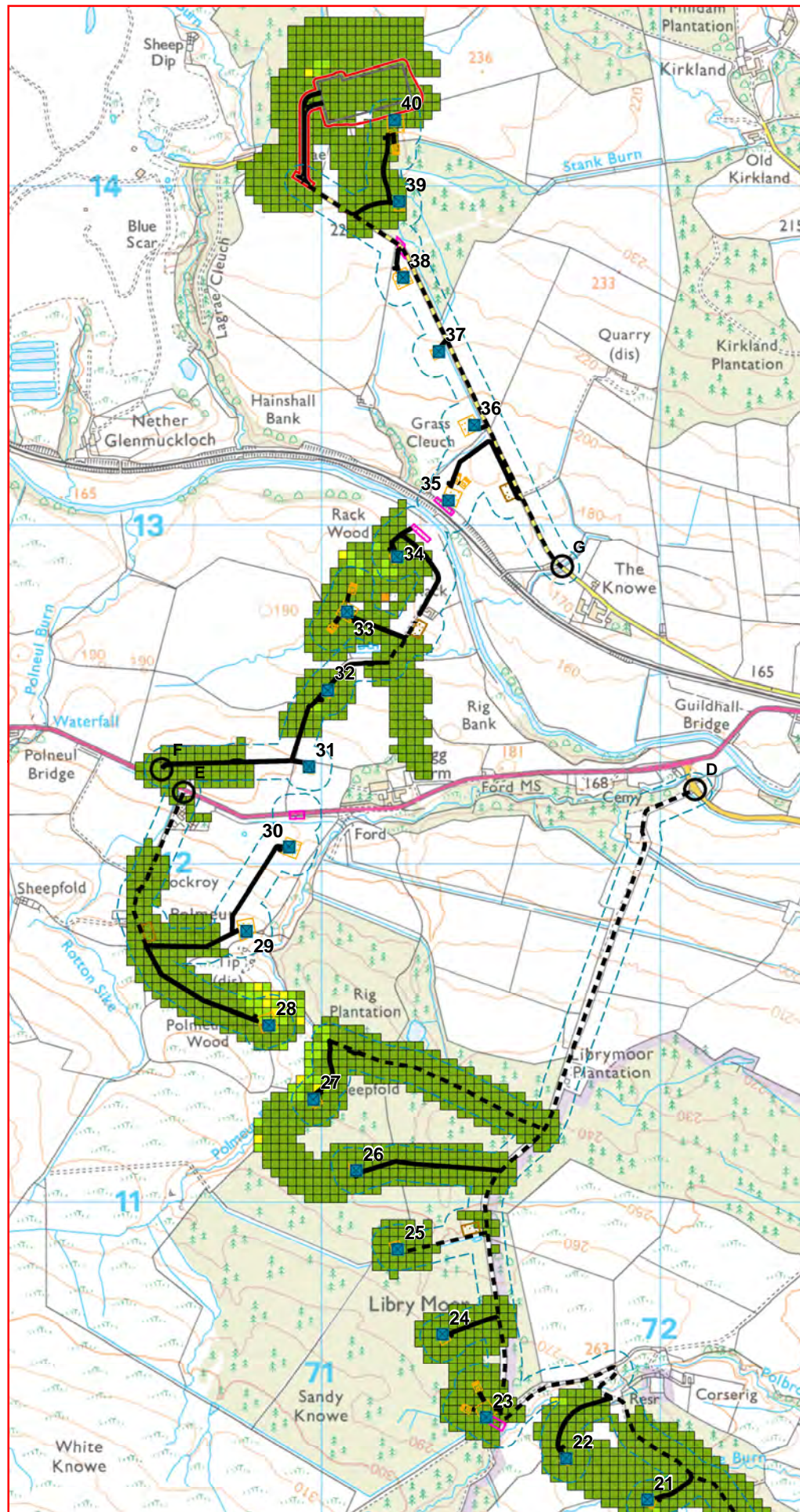
Map scale 1:17,500 @ A3

Figure 7.5.6 - Factor of Safety (Conservative Parameters)

Legend  
Refer to Figure 1 for infrastructure symbology

**Factor of Safety (Conservative Parameters)**

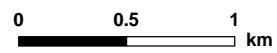
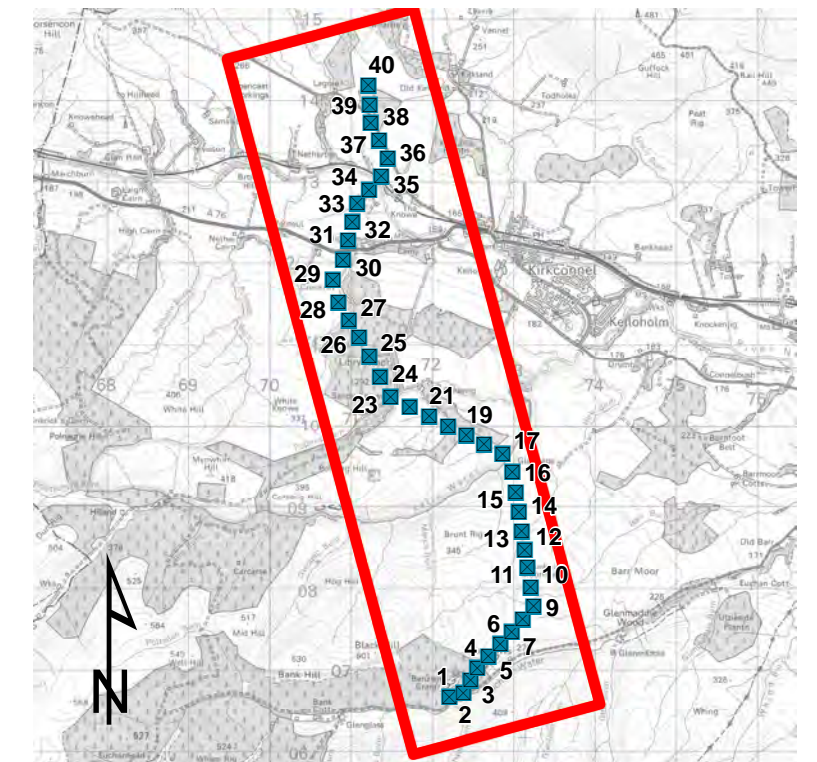
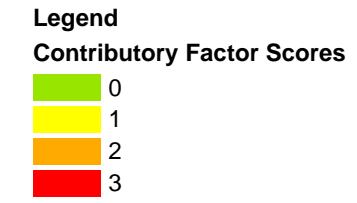
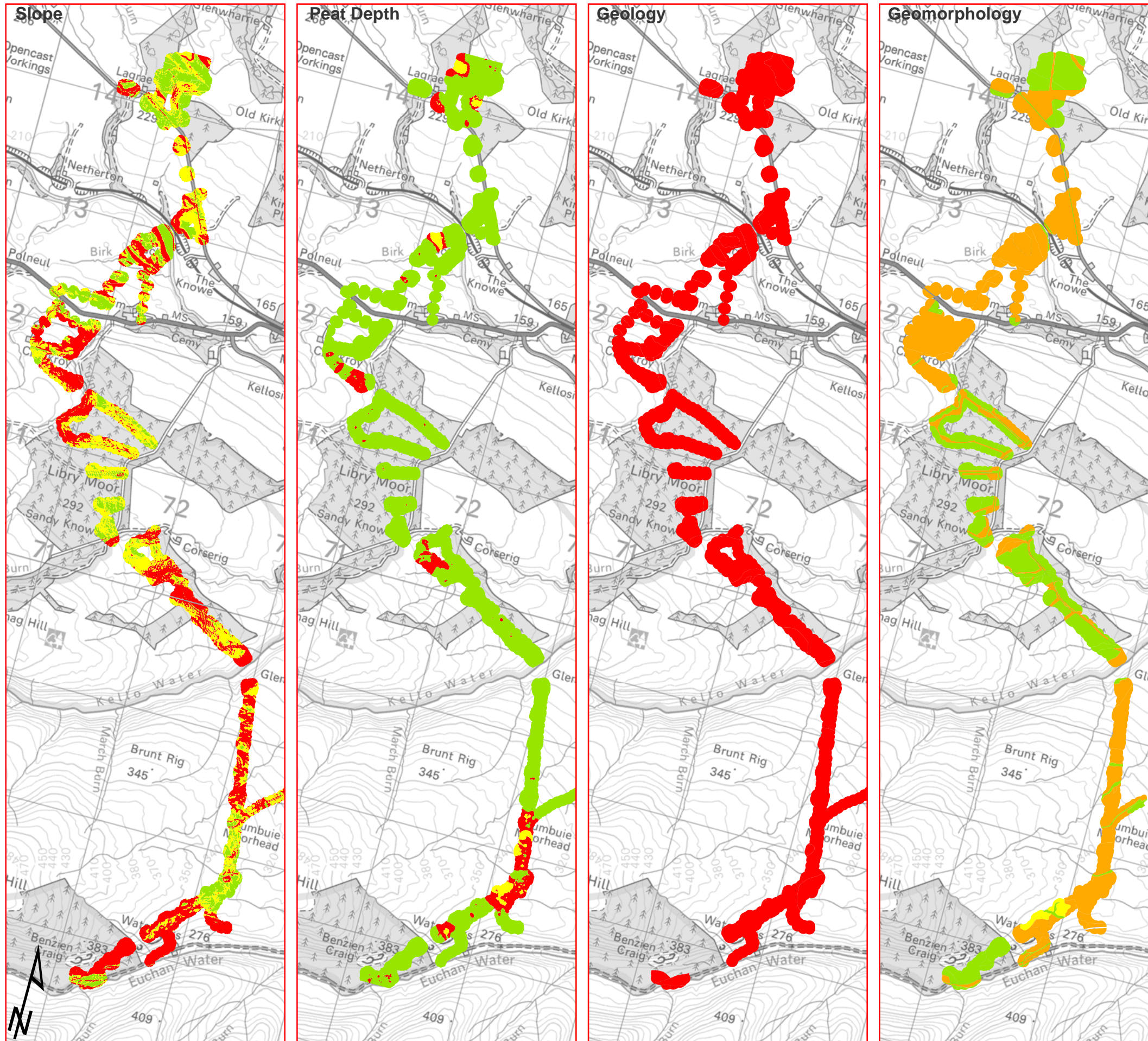
- 0.0 - 1.0 "Unstable"
- 1.0 - 1.4 "Marginally Stable"
- 1.4 - 2.0 "Stable"
- 2.0 - 3.0 "Stable"
- > 3.0 "Stable"



Map scale 1:17,500 @ A3



Figure 7.5.7a - Contributory Factors

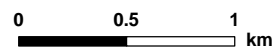
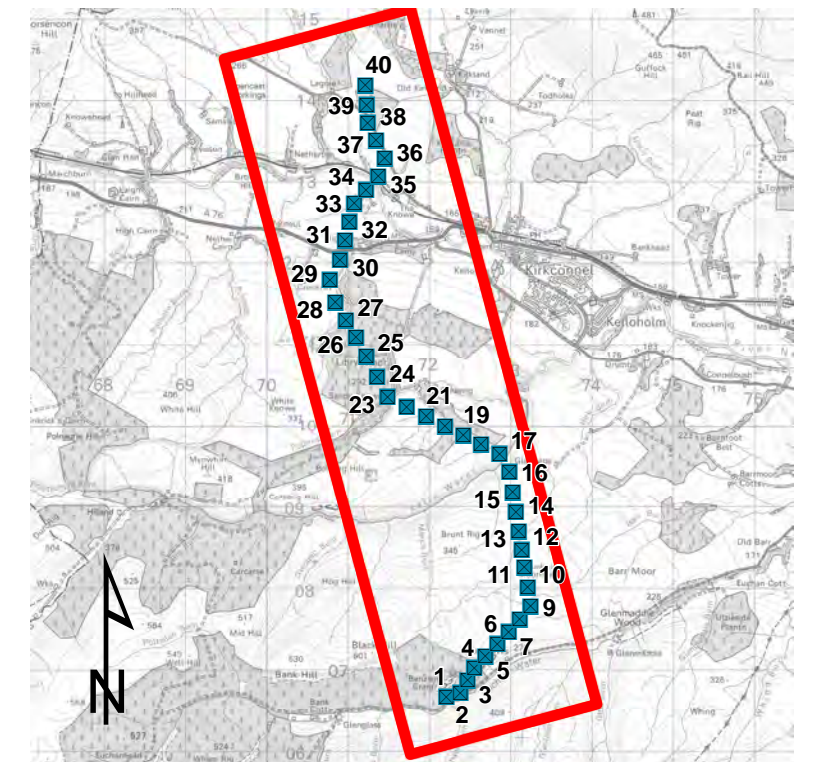
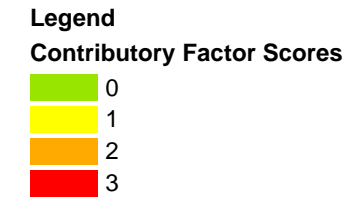
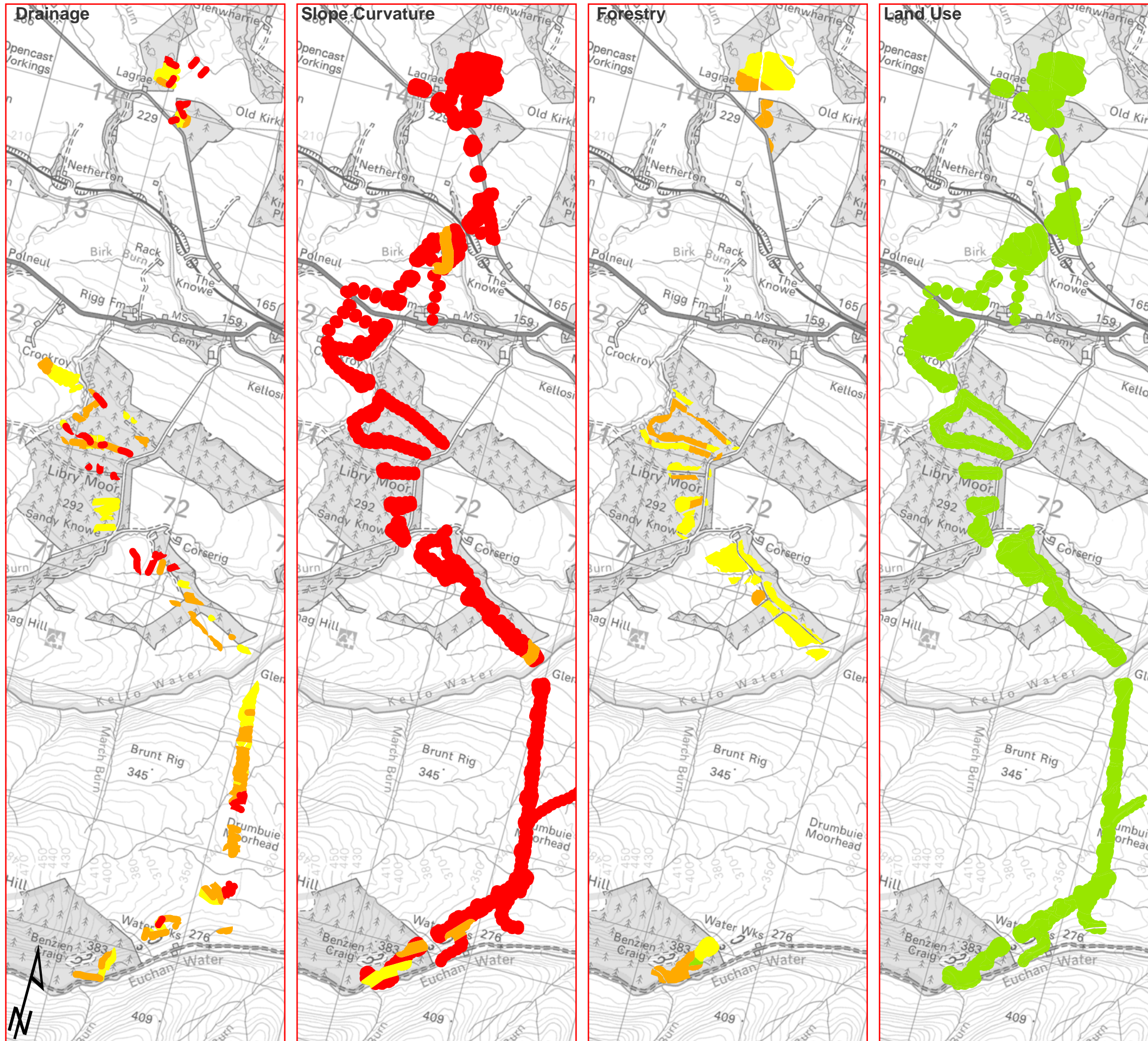


Map scale 1:35,000 @ A3





Figure 7.5.7b - Contributory Factors

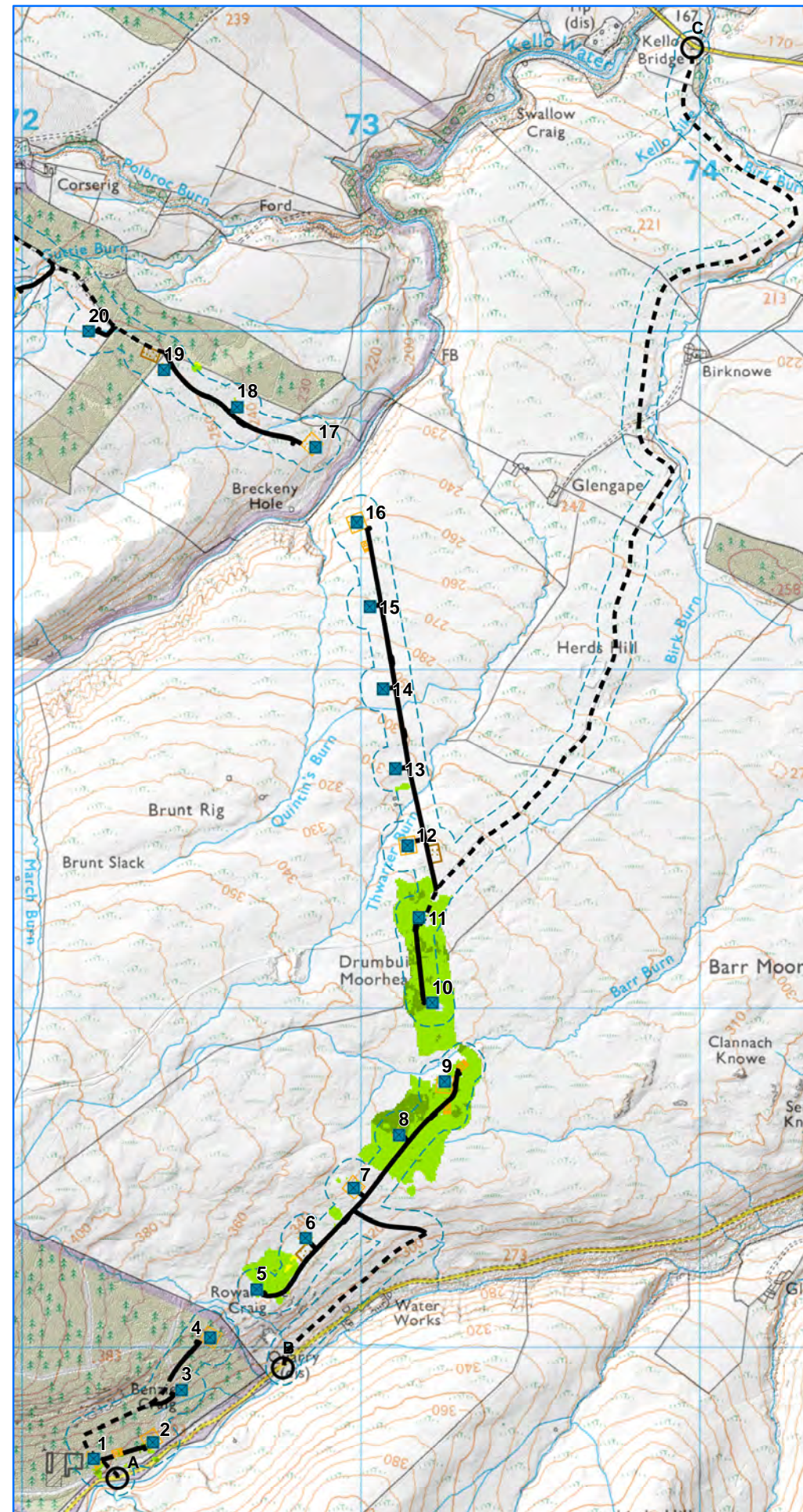
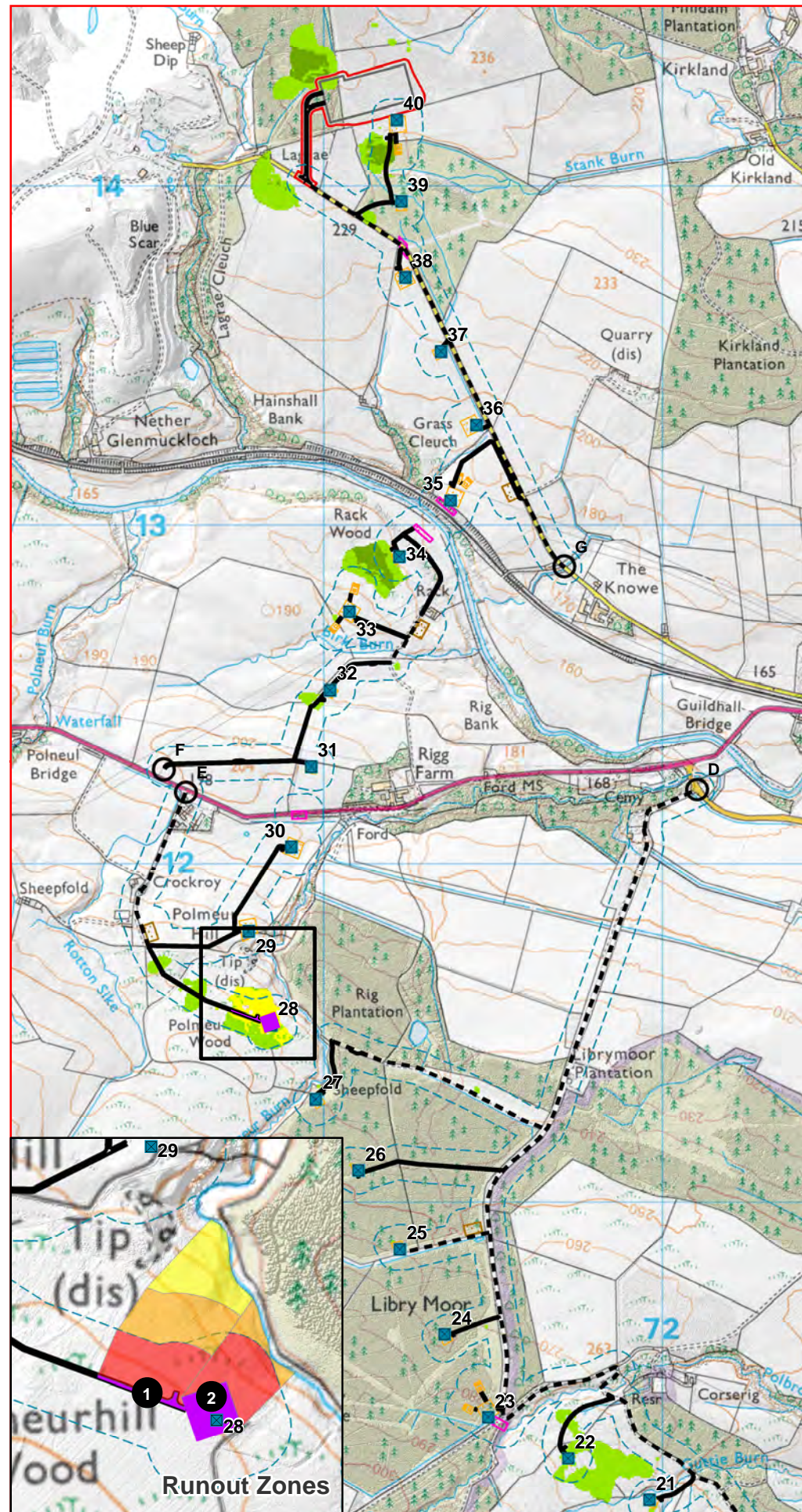


Map scale 1:35,000 @ A3



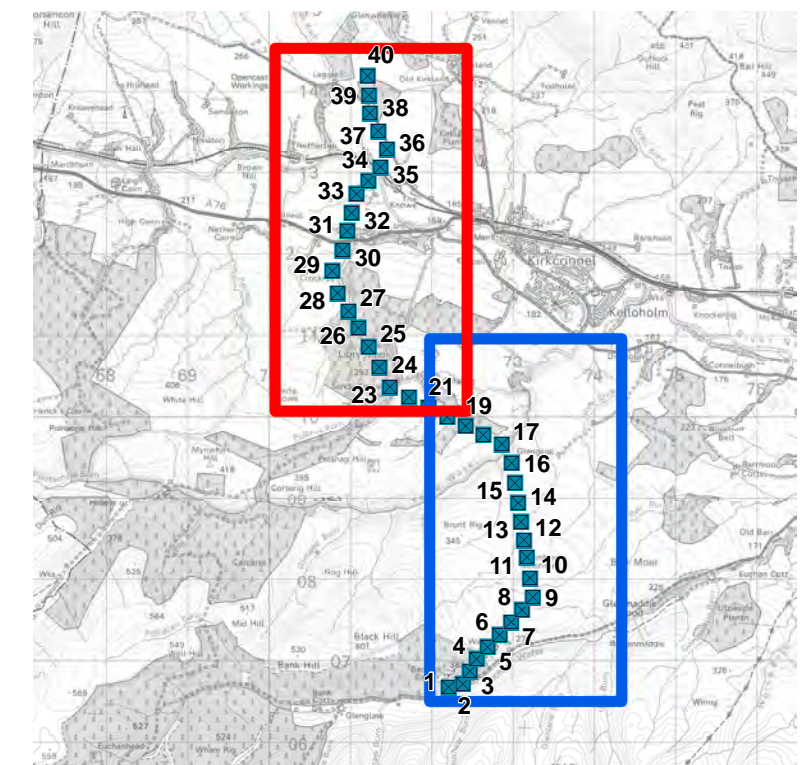


Figure 7.5.8 - Peat Landslide Likelihood



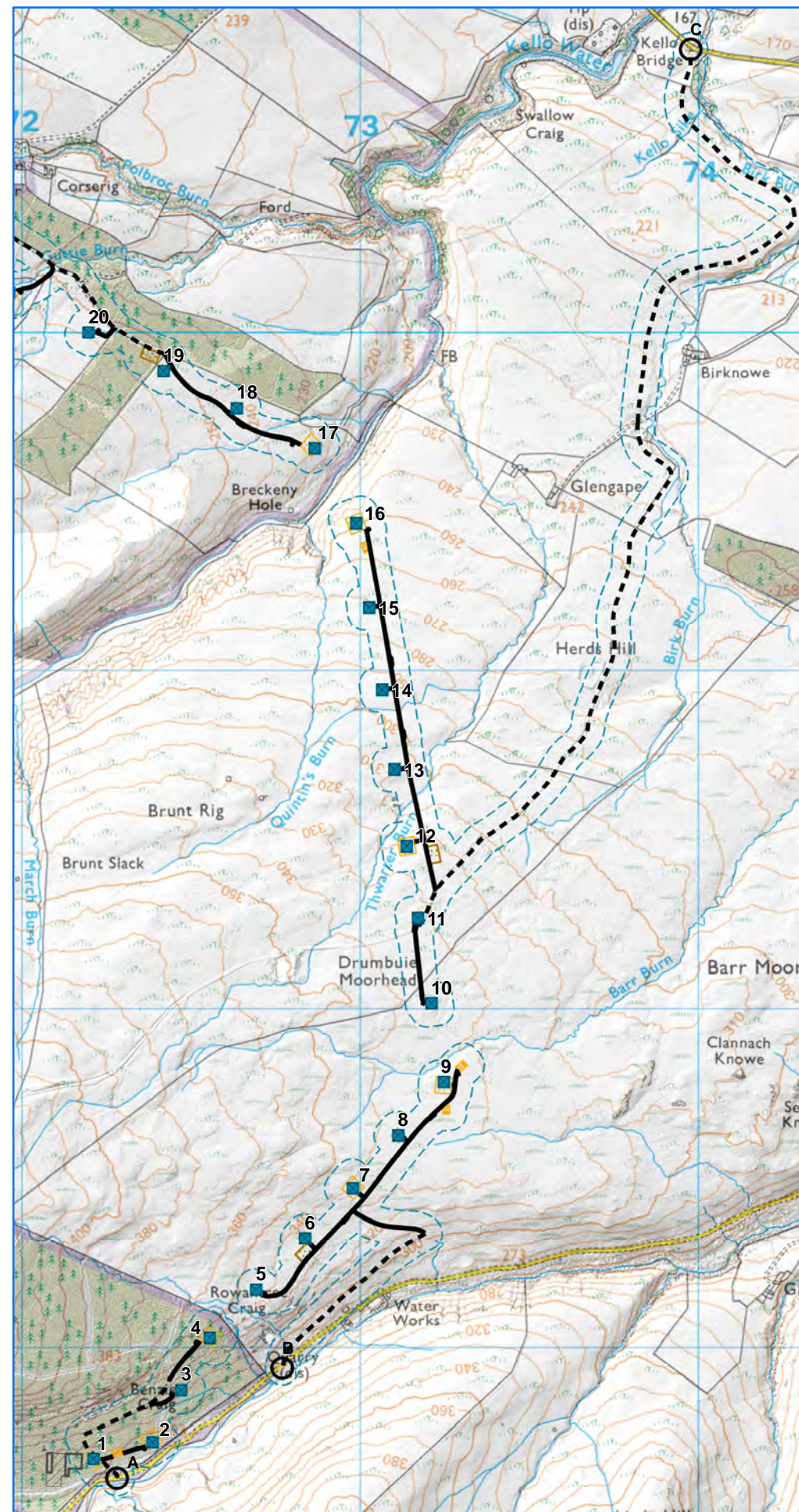
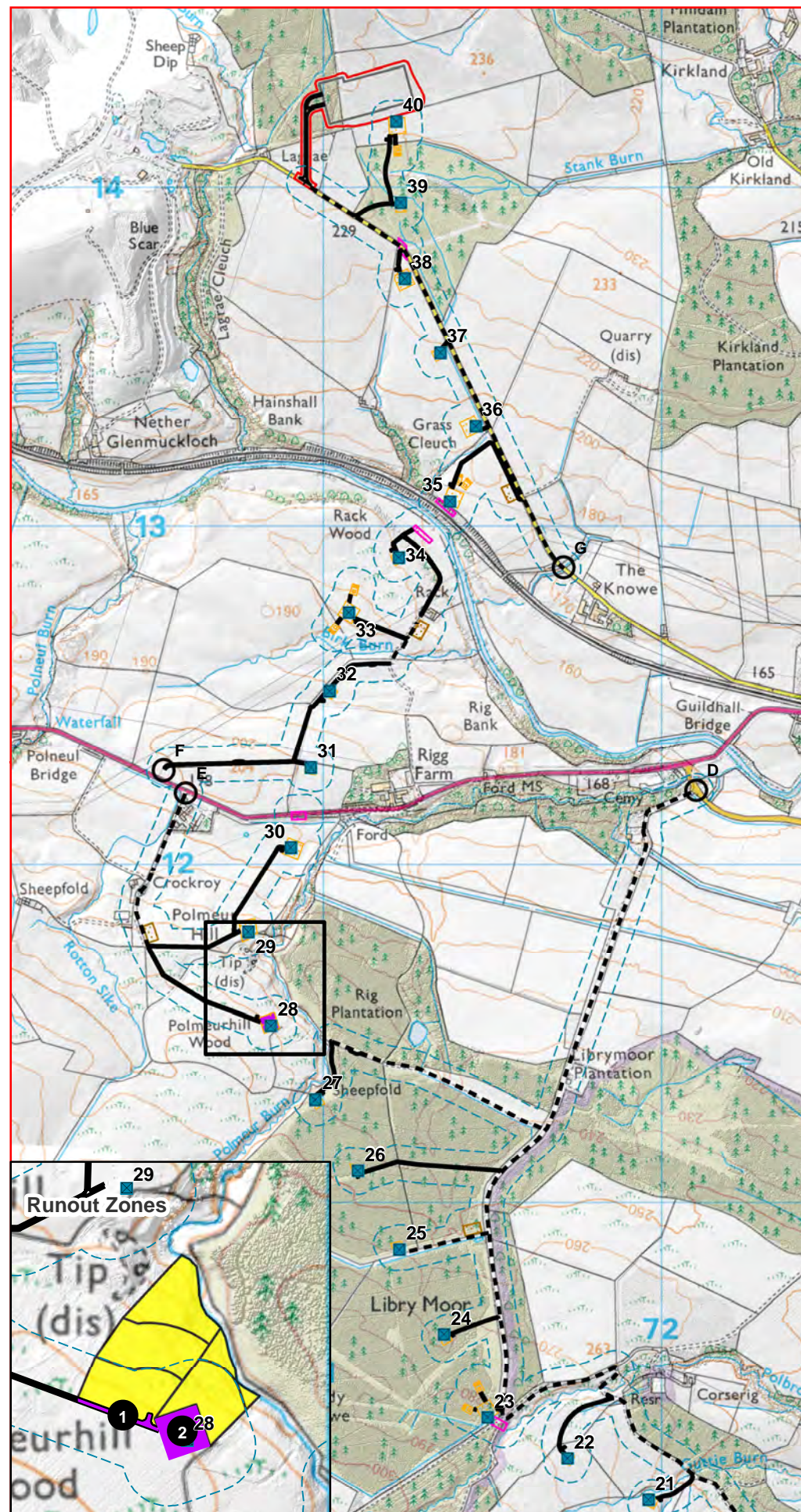
**Legend**  
Refer to Figure 1 for infrastructure symbology

- Source Zones**
- Source Zones
- Runout Zones**
- 0 - 50 m
  - 50 - 100 m
  - 100 - 250 m
- Landslide Susceptibility Score**
- <=7 (Very Low)
  - 8 - 12 (Low)
  - 13 - 17 (Moderate)
  - 18 - 21 (High)
  - 22 - 24 (Very High)



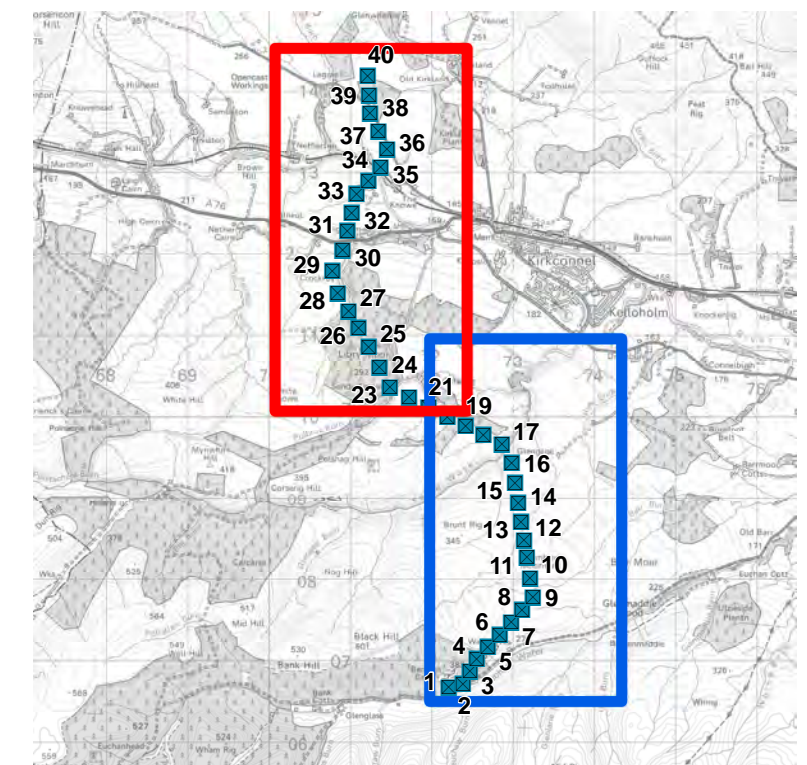
Map scale 1:17,500 @ A3

Figure 7.5.9 - Peat Landslide Likelihood and Runout Zones



**Legend**  
Refer to Figure 1 for infrastructure symbology

- Calculated Risk**
- High
  - Medium
  - Low
  - Negligible
  - Source Zone (see inset map, left panel)



Map scale 1:17,500 @ A3