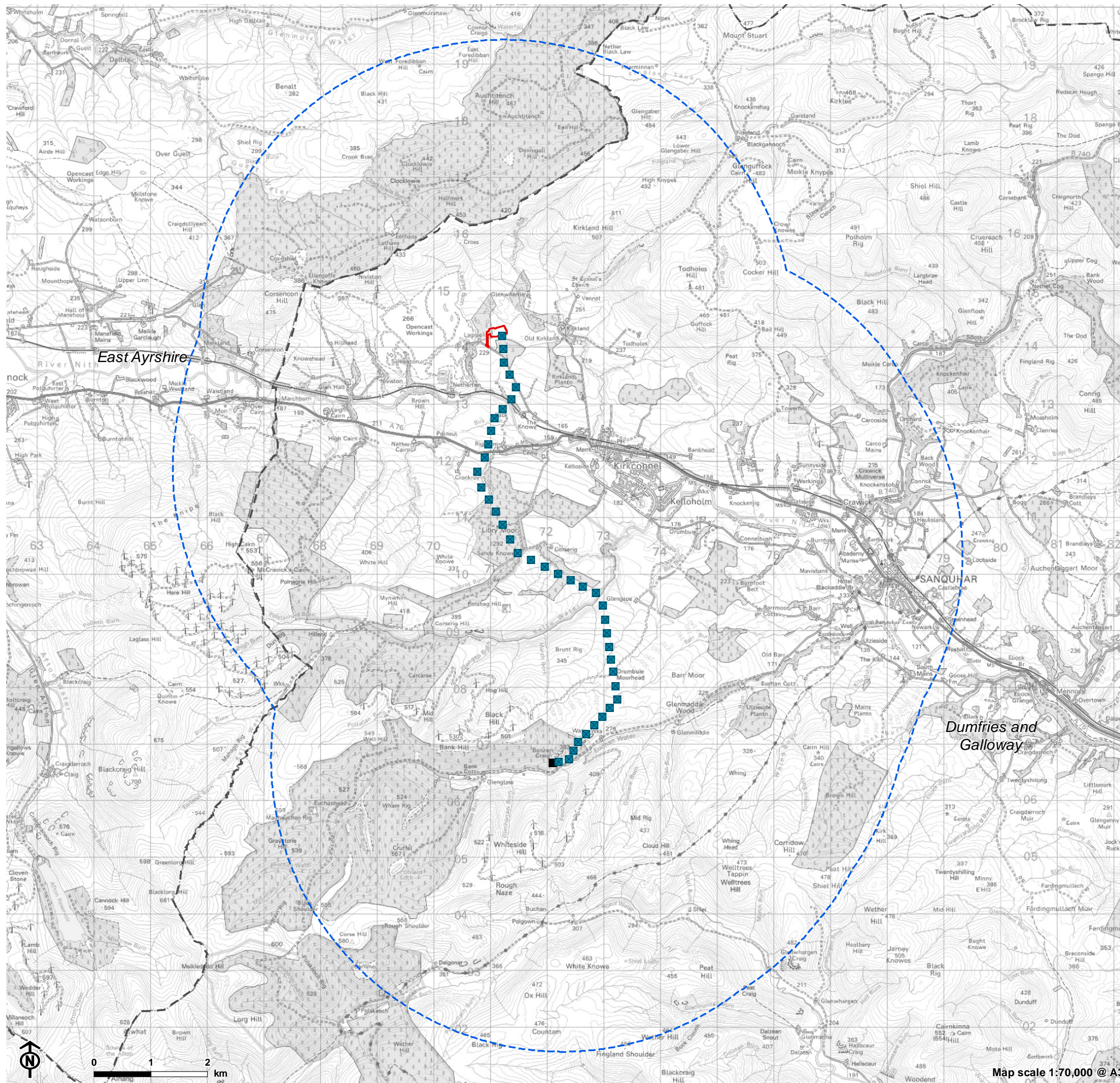


Figure 6.1: Landscape and Visual Impact Assessment Study Area



**Overhead line infrastructure**

- Tower (steel lattice tower)

**Substations**

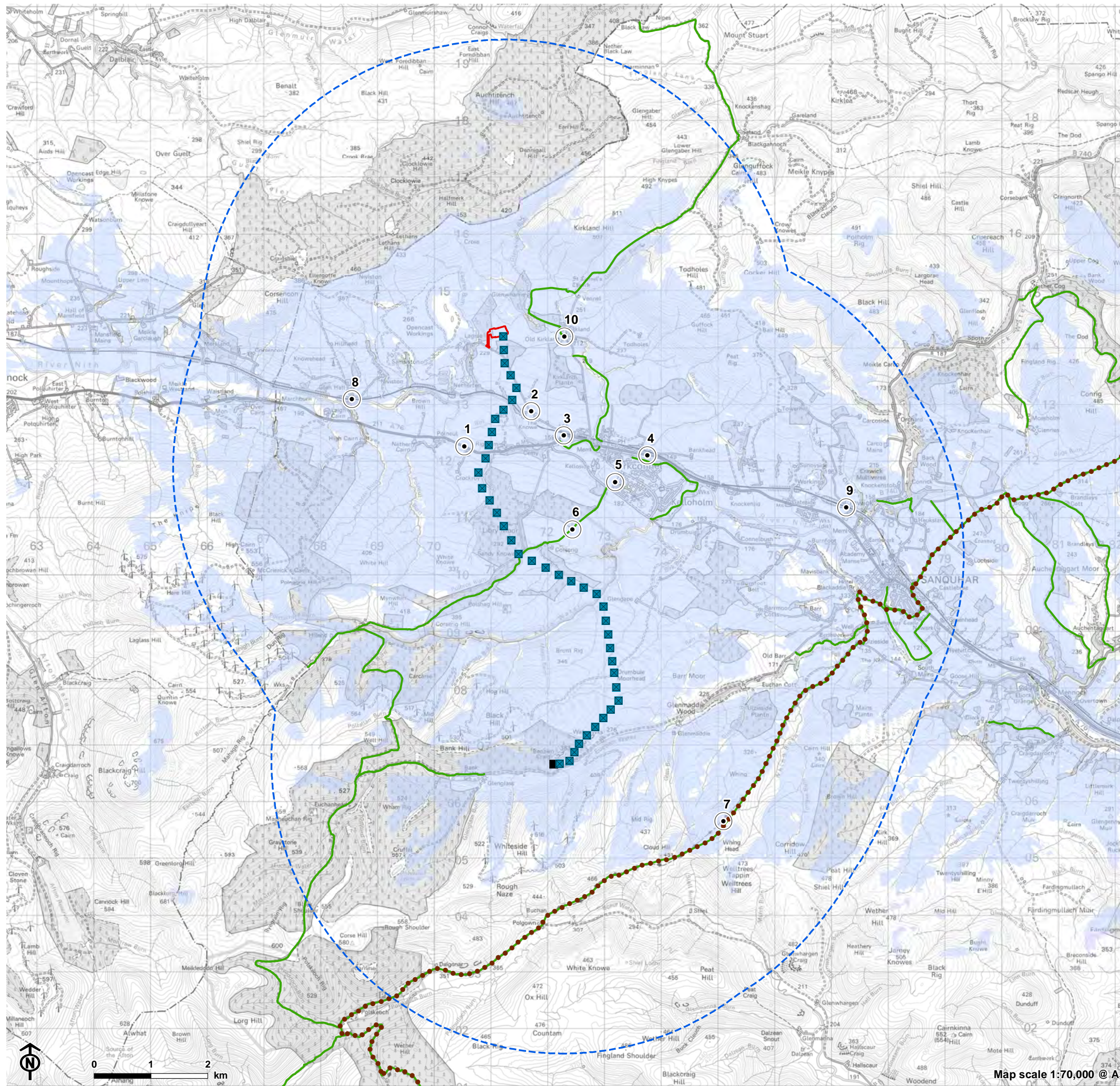
- ▭ Glenmuckloch substation site boundary
- ▭ Glenglass substation and proposed extension (does not form part of this application)

**Landscape and visual impact assessment study area**

- ▭ Local authority boundary
- ▭ LVIA study area (5km)



Figure 6.2: GGRP Zone of Theoretical Visibility (ZTV) and Viewpoint Locations



**Overhead line infrastructure**

- Tower (steel lattice tower)

**Substations**

- ▭ Glenmuckloch substation site boundary
- Glenglass substation and proposed extension (does not form part of this application)

**Landscape and visual impact assessment study area**

- ▭ LVIA study area (5km)

**Zone of theoretical visibility \***

- ▭ No theoretical visibility of proposed tower and substation
- ▭ Theoretical visibility of proposed tower and substation

○ Viewpoint location

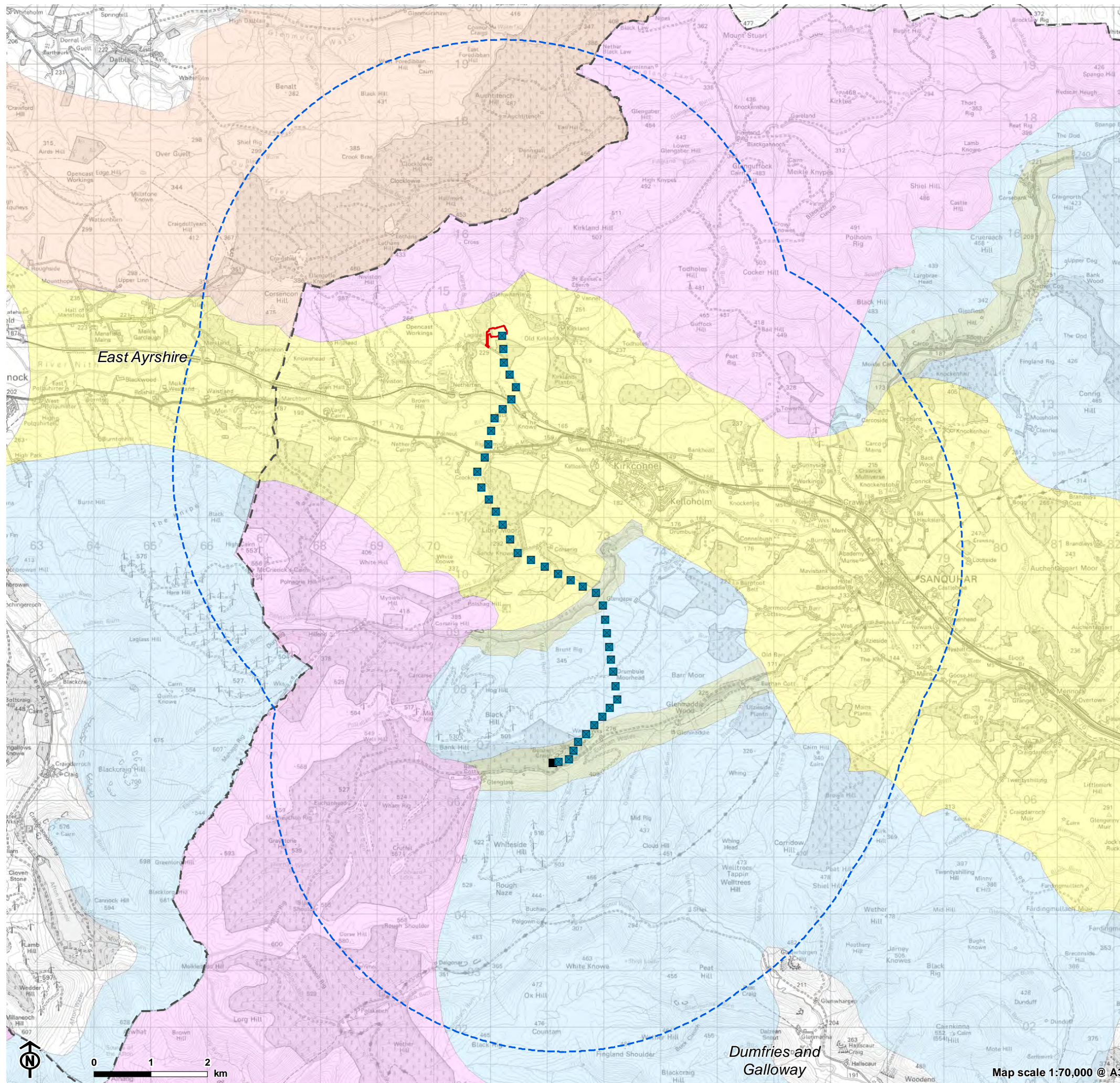
- 1 - A76 near Crockroy
- 2 - Lagrae Road
- 3 - A76 near Guildhall Bridge
- 4 - Main Street, Kirkconnel
- 5 - South Kelloholm
- 6 - Libry Moor
- 7 - Southern Upland Way near Whing Head
- 8 - Nith Valley near Hall Bridge
- 9 - Finland Road at Pates Bridge
- 10 - Core Path at Kirkland Road
- Southern Upland Way
- Core path

**Notes:**

\* The ZTV indicates the theoretical visibility of the proposal from a viewing height of 2m above ground level. The terrain model assumes bare ground and is derived for OS Terrain 5 height data (5m resolution obtained from Ordnance Survey) Earth curvature and atmospheric refraction have been taken into account. The ZTV was calculated using ArcMap 10.8.1 software. Tower heights range from 26.16 to 39.09m Control building 4.12m Substation compound 9.6m



Figure 6.3: Landscape Character Types



**Overhead line infrastructure**

- Tower (steel lattice tower)

**Substations**

- ▭ Glenmuckloch substation site boundary
- Glenglass substation and proposed extension (does not form part of this application)

**Landscape and visual impact assessment study area**

- ▭ Local authority boundary
- ▭ LVIA study area (5km)

**Local Landscape Character Type**

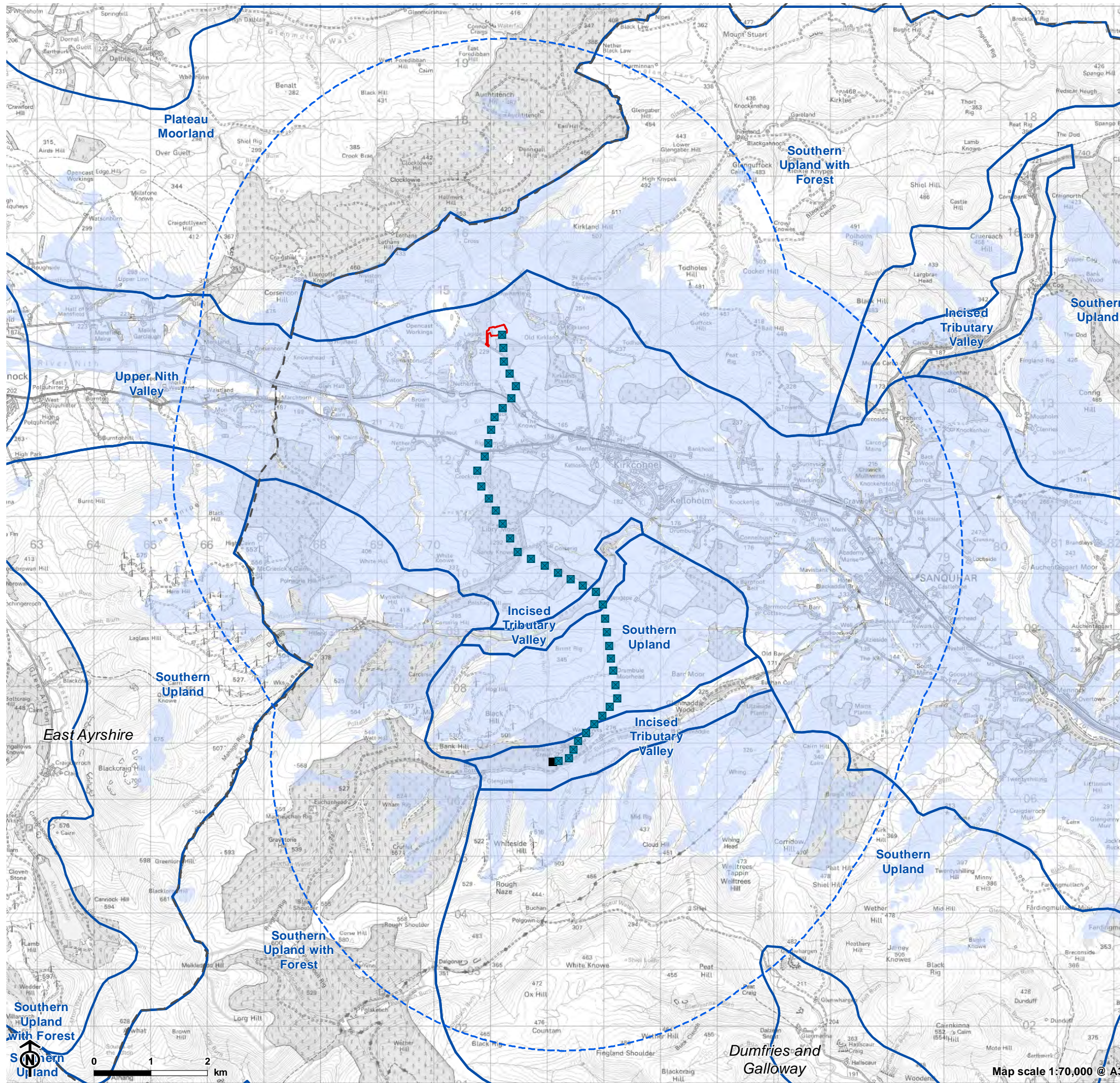
- Incised Tributary Valley
- Plateau Moorland
- Southern Upland
- Southern Upland with Forest
- Upper Nith Valley

Dumfries and Galloway

Map scale 1:70,000 @ A3



Figure 6.4: Landscape Character Types with Zone of Theoretical Visibility (ZTV)



**Overhead line infrastructure**

- Tower (steel lattice tower)

**Substation**

- ▭ Glenmuckloch substation site boundary
- Glenglass substation and proposed extension (does not form part of this application)

**Landscape and visual impact assessment study area**

- ▭ Local authority boundary
- ▭ LVIA study area (5km)

- ▭ Local Landscape Character Type

**Zone of theoretical visibility \***

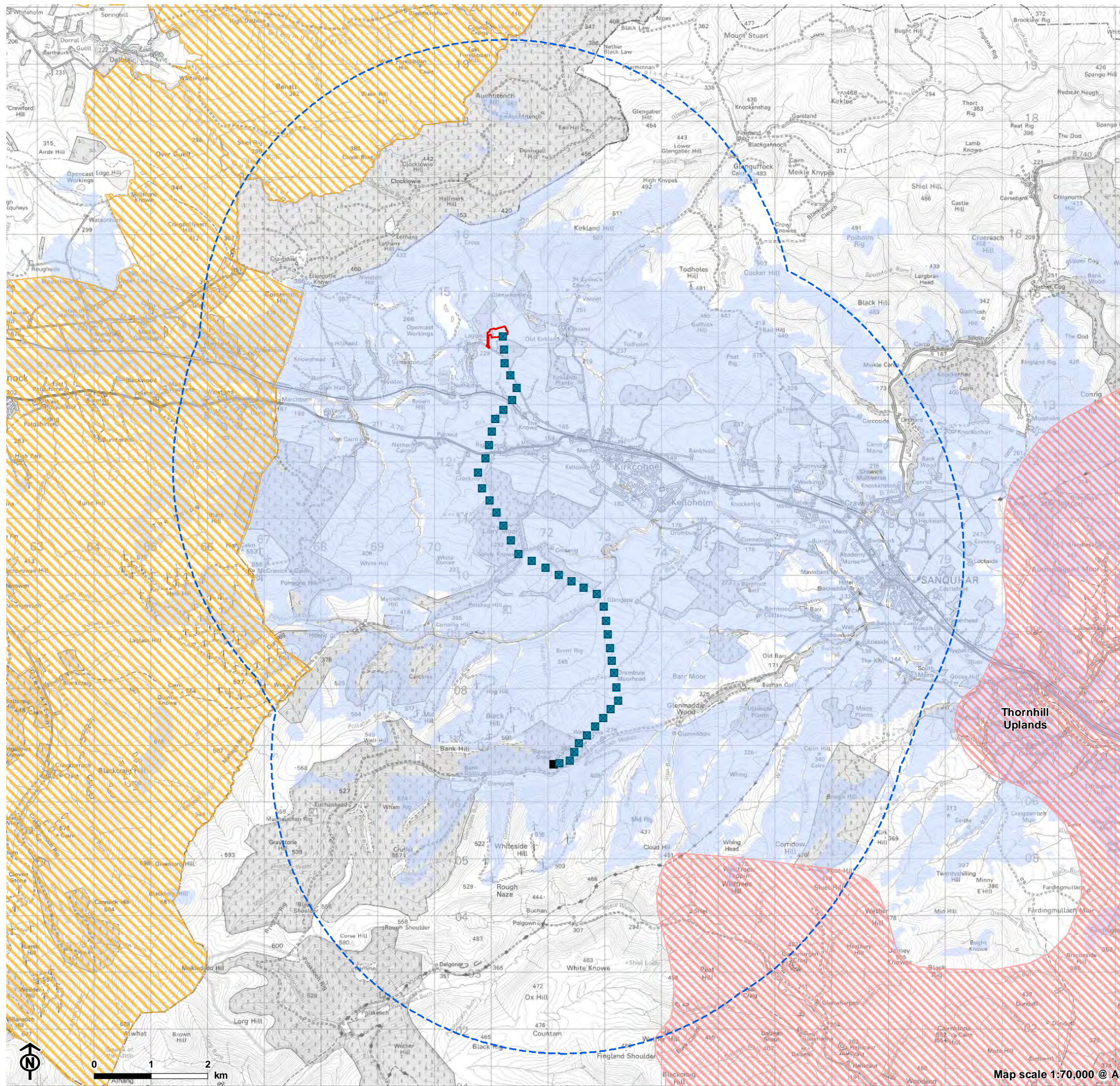
- ▭ No theoretical visibility of proposed tower and substation
- ▭ Theoretical visibility of proposed tower and substation

**Notes:**

\* The ZTV indicates the theoretical visibility of the proposal from a viewing height of 2m above ground level. The terrain model assumes bare ground and is derived for OS Terrain 5 height data (5m resolution obtained from Ordnance Survey) Earth curvature and atmospheric refraction have been taken into account. The ZTV was calculated using ArcMap 10.8.1 software. Tower heights range from 26.16 to 39.09m Control building 4.12m Substation compound 9.6m



Figure 6.5: Designated Landscapes with Zone of Theoretical Visibility (ZTV)



**Overhead line infrastructure**

- Tower (steel lattice tower)

**Substations**

- ▭ Glenmuckloch substation site boundary
- Glenglass substation and proposed extension (does not form part of this application)

**Landscape and visual impact assessment study area**

- ▭ LVIA study area (5km)

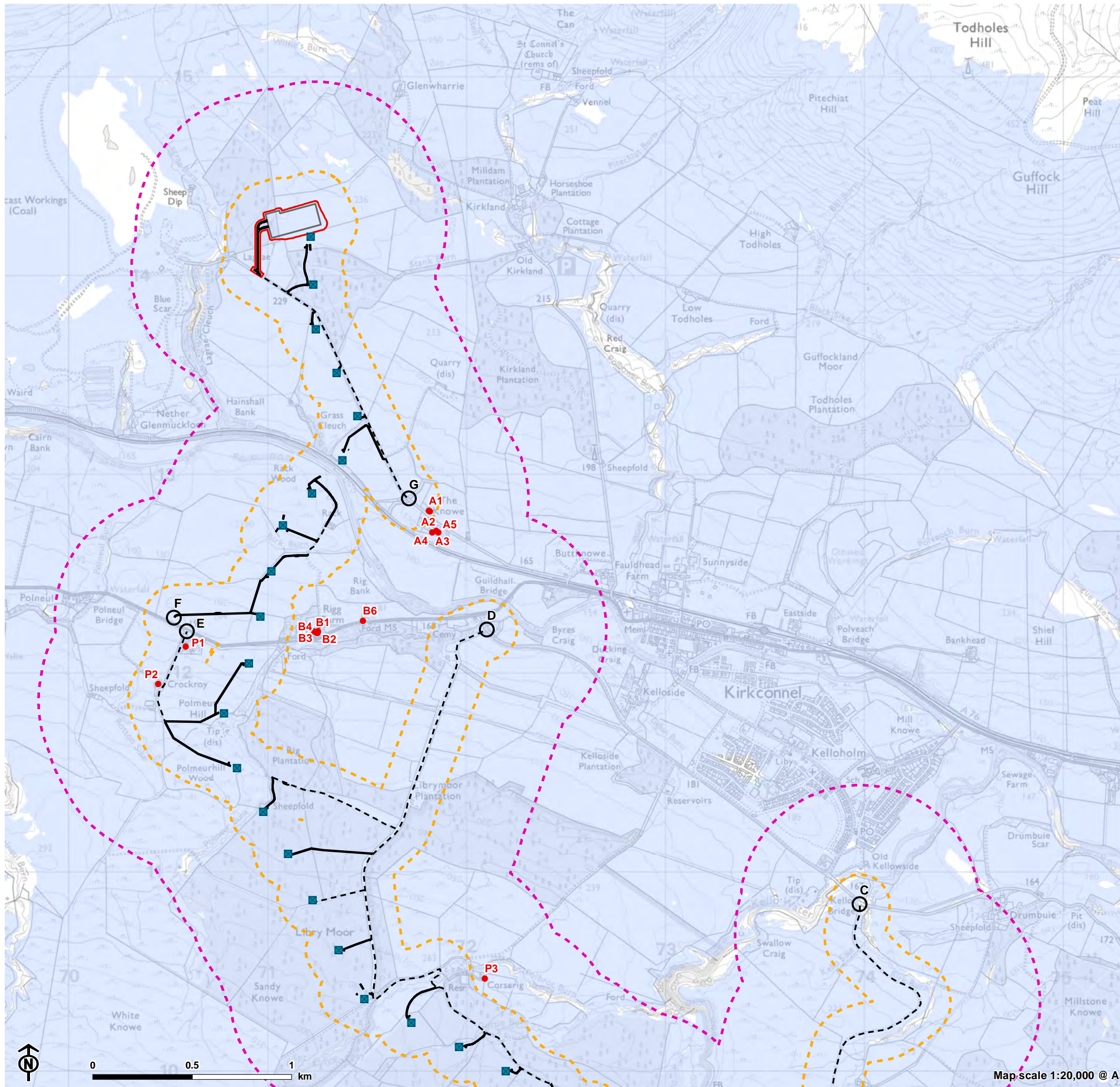
**Zone of theoretical visibility \***

- ▭ No theoretical visibility of proposed tower and substation
- ▭ Theoretical visibility of proposed tower and substation
- ▨ Regional Scenic Area (Thornhill Uplands)
- ▨ Sensitive Landscape Area (East Ayrshire)

**Notes:**

\* The ZTV indicates the theoretical visibility of the proposal from a viewing height of 2m above ground level. The terrain model assumes bare ground and is derived for OS Terrain 5 height data (5m resolution obtained from Ordnance Survey) Earth curvature and atmospheric refraction have been taken into account. The ZTV was calculated using ArcMap 10.8.1 software. Tower heights range from 26.16 to 39.09m Control building 4.12m Substation compound 9.6m

Figure 6.6a: Residential Properties



**Overhead line infrastructure**

- Tower (steel lattice tower)

**Access to proposed towers and temporary work areas**

- - - Existing access track
- New access track
- Access point

**Proposed Glenmuckloch substation**

- Glenmuckloch substation
- ▭ Glenmuckloch substation site boundary
- Glenmuckloch substation new access track

**Zone of theoretical visibility\***

- No theoretical visibility of proposed tower and substation
- ▭ Theoretical visibility of proposed tower and substation

**Residential visual amenity assessment study area**

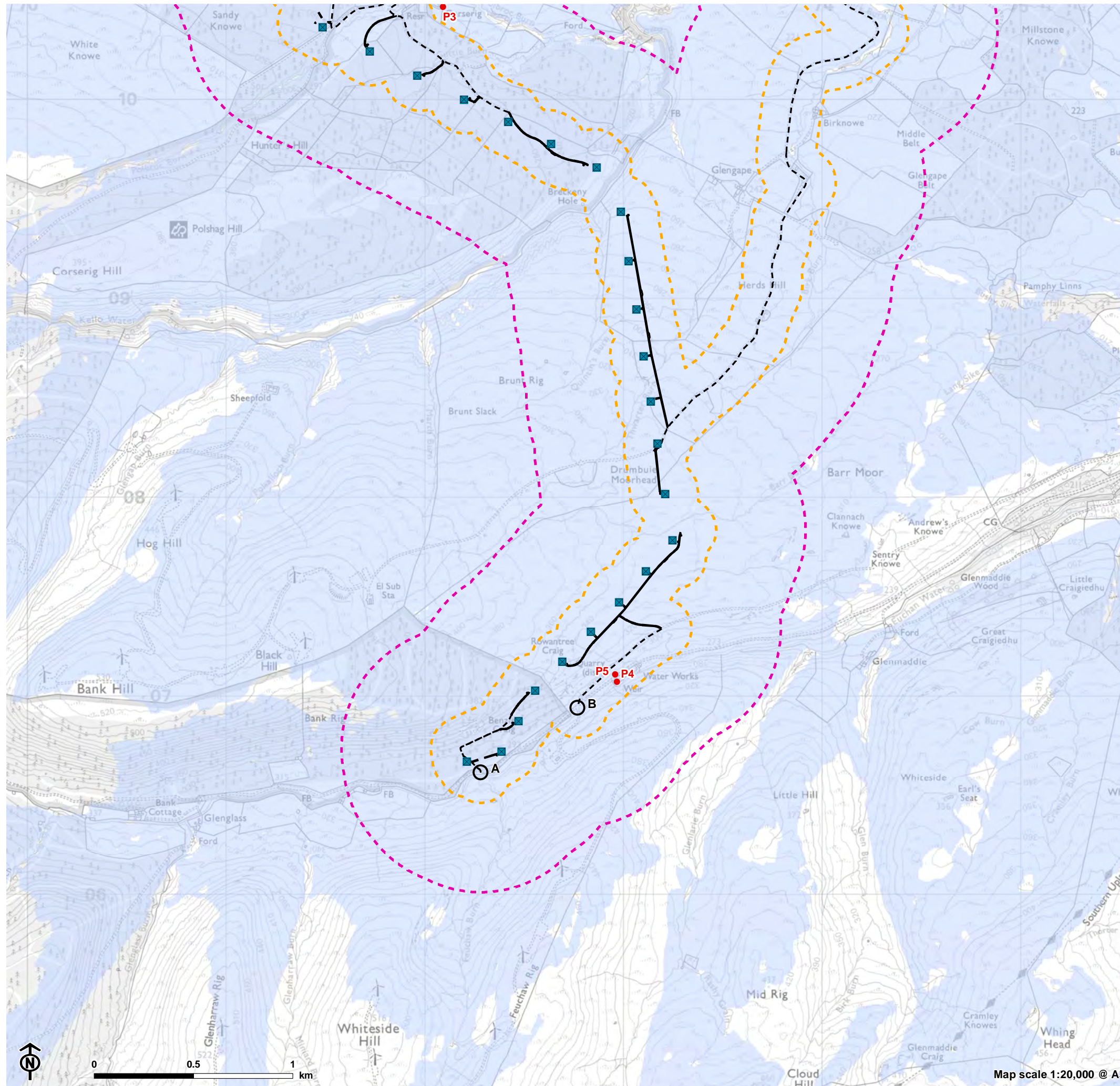
- ▭ LVIA study area (5km)
- ▭ 150m buffer from infrastructure
- ▭ 600m buffer from infrastructure
- Residential property/group

- Group A: The Knowe: A1 - 4 Knowe Cottages  
A2 - 3 Knowe Cottages  
A3 - Knowebrae  
A4 - The Steadings Cottage  
A5 - Knowe Farm
- Group B: Rigg Farm: B1 - The Bothy  
B2 - Shepherds Cottage  
B3 - Cheese Cottage  
B4 - The Rigg Farmhouse  
B5 - Rigg Villa  
B6 - Rigg Cottage
- Individual Properties: P1 - Crockroy Rigg  
P2 - Crockroy Cottage  
P3 - Carserigg

**Notes:**

\* The ZTV indicates the theoretical visibility of the proposal from a viewing height of 2m above ground level. The terrain model assumes bare ground and is derived for OS Terrain 5 height data (5m resolution obtained from Ordnance Survey) Earth curvature and atmospheric refraction have been taken into account. The ZTV was calculated using ArcMap 10.8.1 software. Tower heights range from 26.16 to 39.09m Control building 4.12m Substation compound 9.6m

Figure 6.6b: Residential Properties



**Overhead line infrastructure**

- Tower (steel lattice tower)

**Access to proposed towers and temporary work areas**

- Existing access track
- New access track
- Access point

**Zone of theoretical visibility\***

- No theoretical visibility of proposed tower and substation
- Theoretical visibility of proposed tower and substation

**Residential visual amenity assessment study area**

- LVIA study area (5km)
- 150m buffer from infrastructure
- 600m buffer from infrastructure
- Residential property/group

Individual Properties: P3 - Carserigg  
P4 - Euchan Filter Station House  
P5 - Euchan Filter Station Cottage

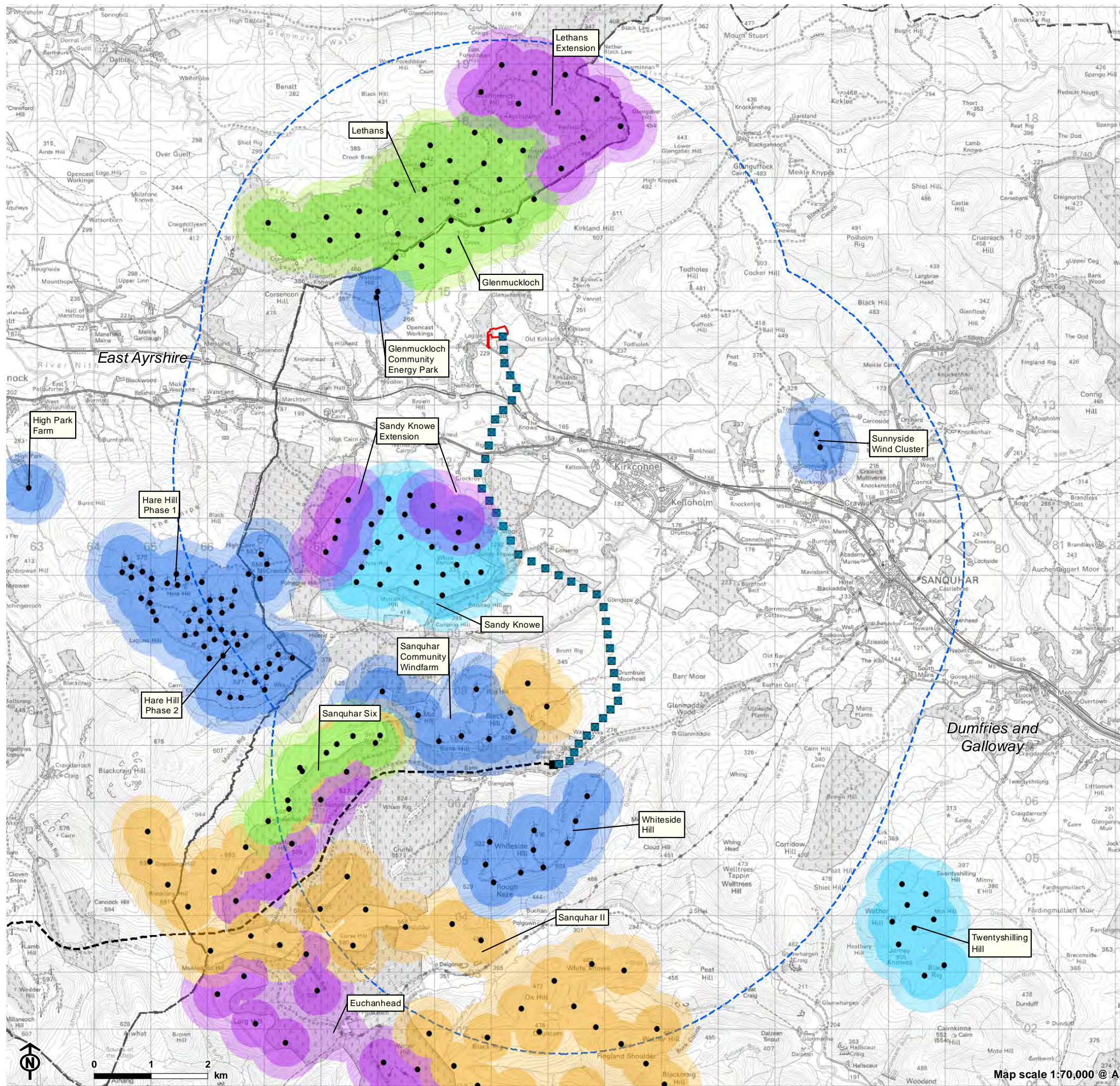
**Notes:**

\* The ZTV indicates the theoretical visibility of the proposal from a viewing height of 2m above ground level. The terrain model assumes bare ground and is derived for OS Terrain 5 height data (5m resolution obtained from Ordnance Survey) Earth curvature and atmospheric refraction have been taken into account. The ZTV was calculated using ArcMap 10.8.1 software. Tower heights range from 26.16 to 39.09m Control building 4.12m Substation compound 9.6m



Map scale 1:20,000 @ A3

Figure 6.7: Schemes Included in the Cumulative Assessment



**Overhead line infrastructure**

- Tower (steel lattice tower)

**Substations**

- ▭ Glenmuckloch substation site boundary
- Glenglass substation and proposed extension (does not form part of this application)
- South West Scotland (SWS) Project (operational)

**Landscape and visual impact assessment study area**

- ▭ Local authority boundary
- ▭ LVIA study area (5km)

**Windfarm planning status**

- Operational
- Consented
- Under Construction
- Application Submitted
- Appeal/Public Inquiry
- Turbine