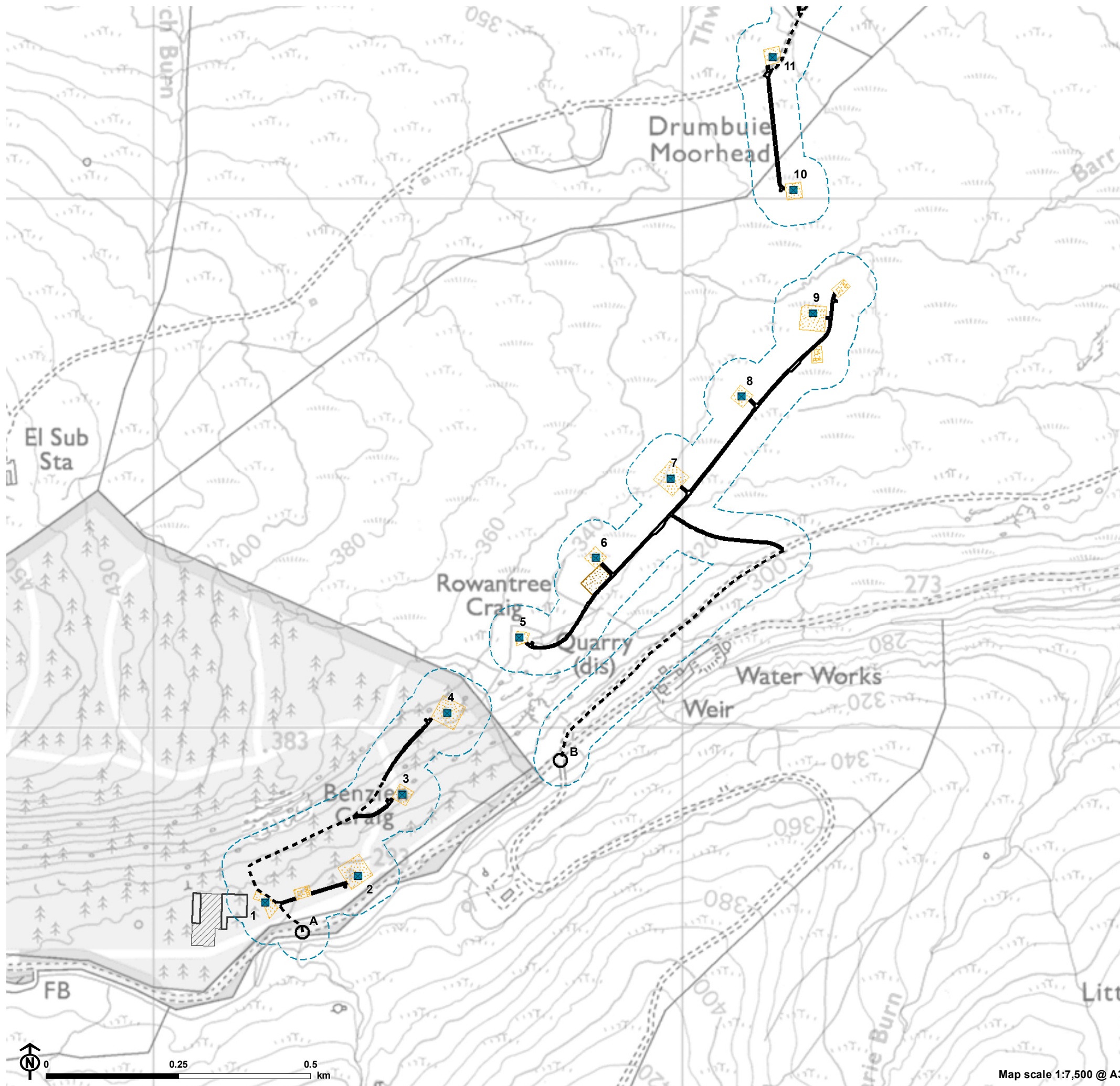


Figure 4.1a: The Glenmuckloch to Glenglass Reinforcement Project



- Overhead line infrastructure**
- Tower (steel lattice tower)
 - ▨ Laydown area
 - ▨ Working area
 - ▭ Infrastructure location allowance (ILA)
- Access to proposed towers and temporary work areas**
- - - Existing access track
 - New access track
 - Access point
- Glenglass substation (does not form part of this application)
- ▨ Existing substation
 - Proposed substation extension

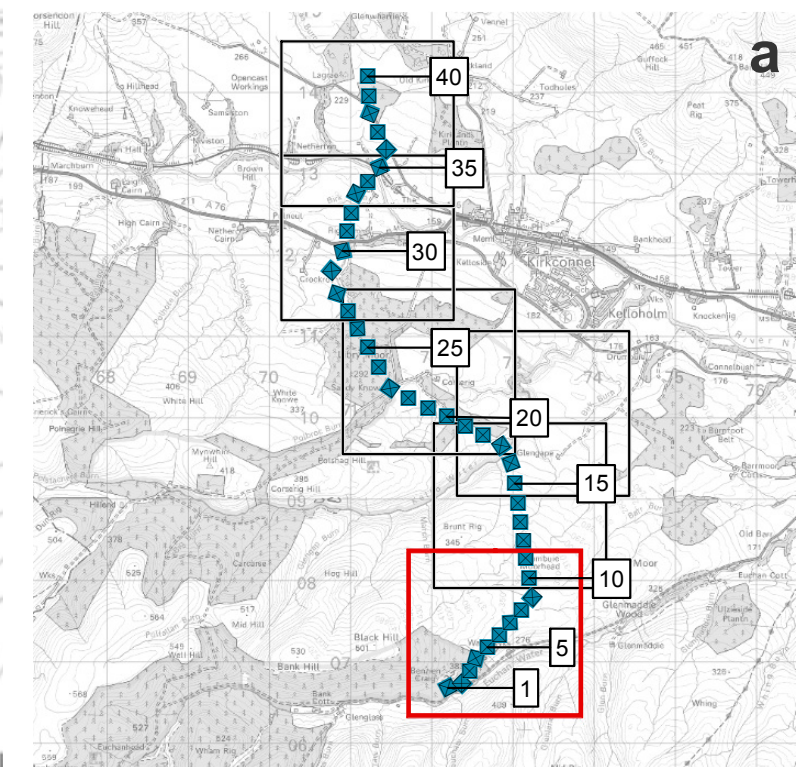


Figure 4.1b: The Glenmuckloch to Glenglass Reinforcement Project

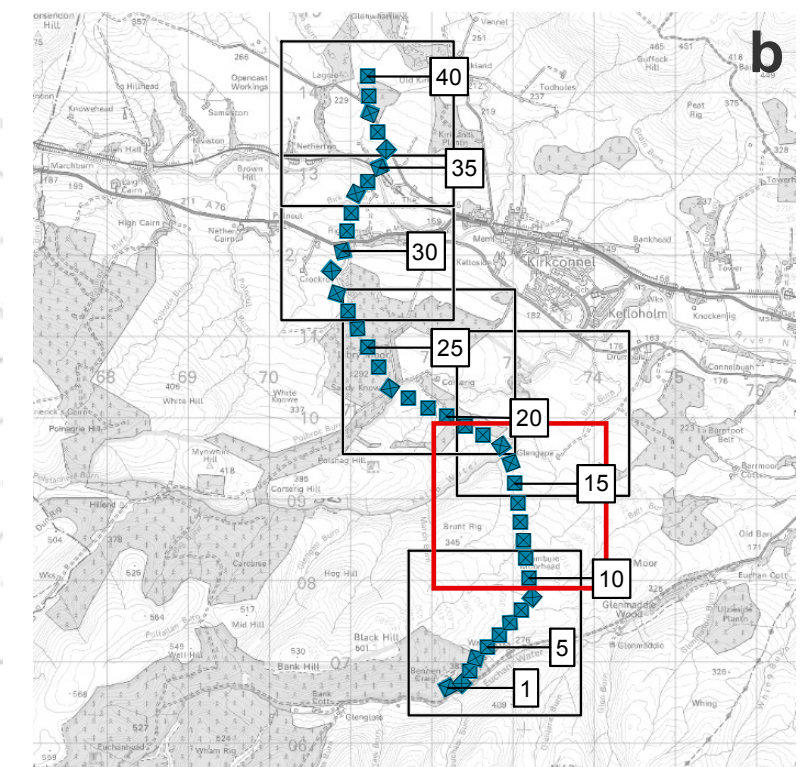
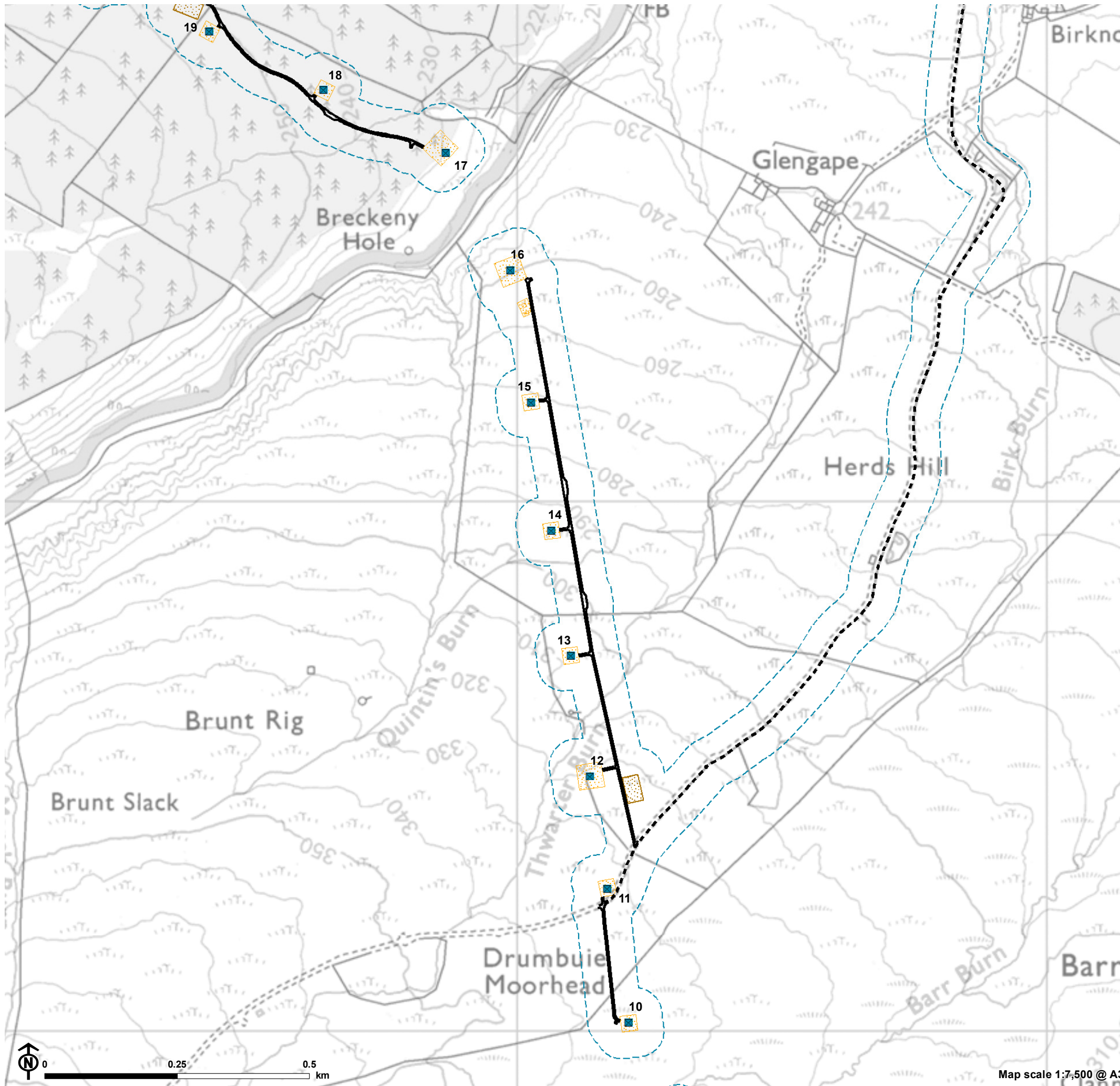
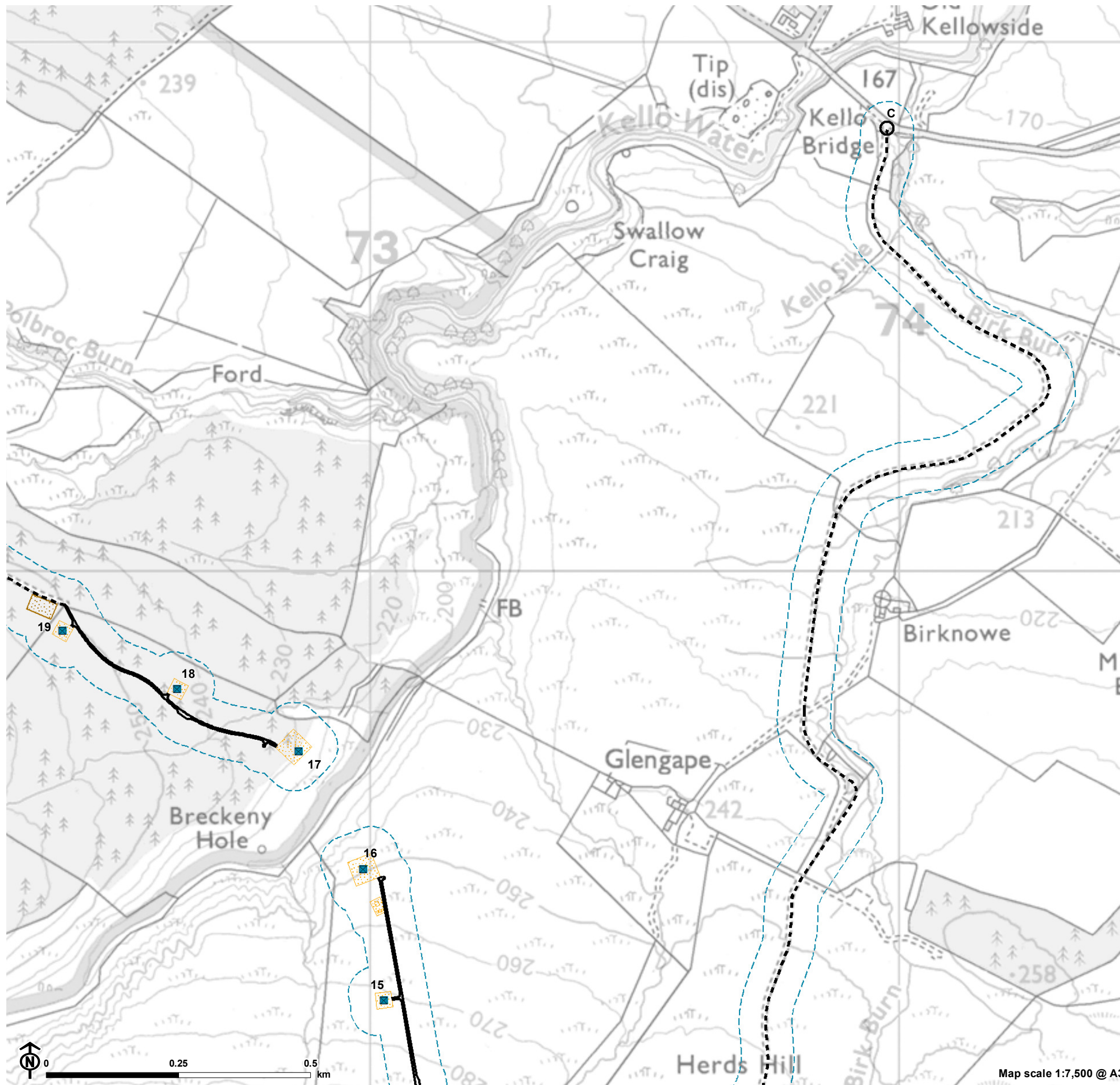
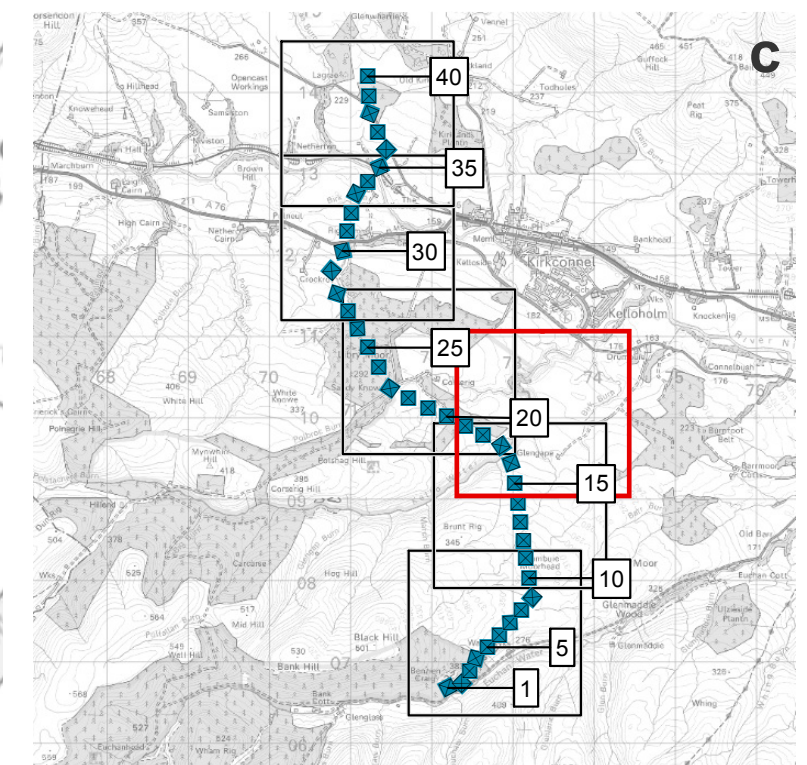


Figure 4.1c: The Glenmuckloch to Glenglass Reinforcement Project



- Overhead line infrastructure**
- Tower (steel lattice tower)
 - Laydown area
 - Working area
 - Infrastructure location allowance (ILA)
- Access to proposed towers and temporary work areas**
- Existing access track
 - New access track
 - Access point



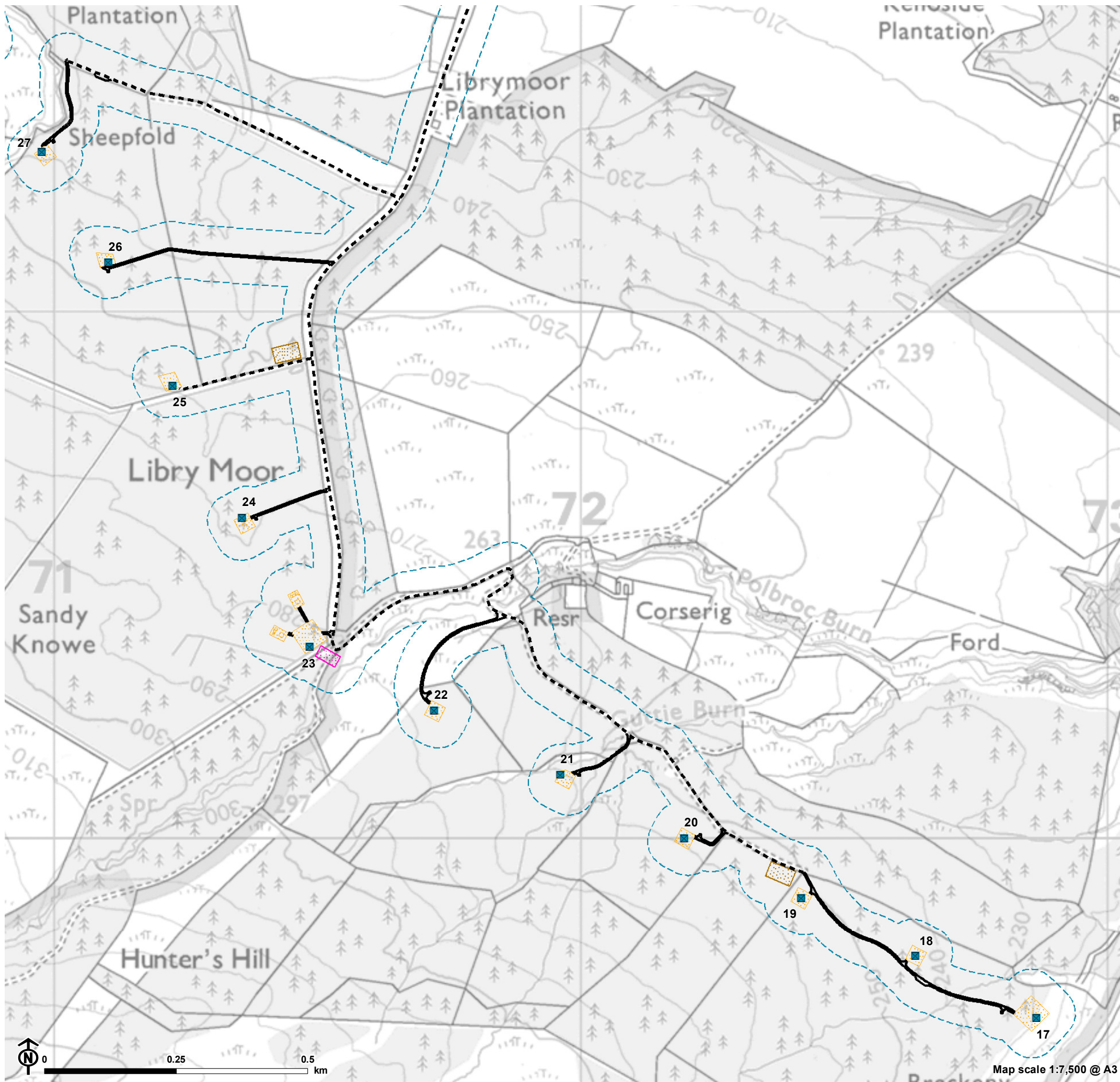


Figure 4.1d: The Glenmuckloch to Glenglass Reinforcement Project

Overhead line infrastructure

- Tower (steel lattice tower)
- Laydown area
- Scaffolding
- Working area
- Infrastructure location allowance (ILA)

Access to proposed towers and temporary work areas

- Existing access track
- New access track

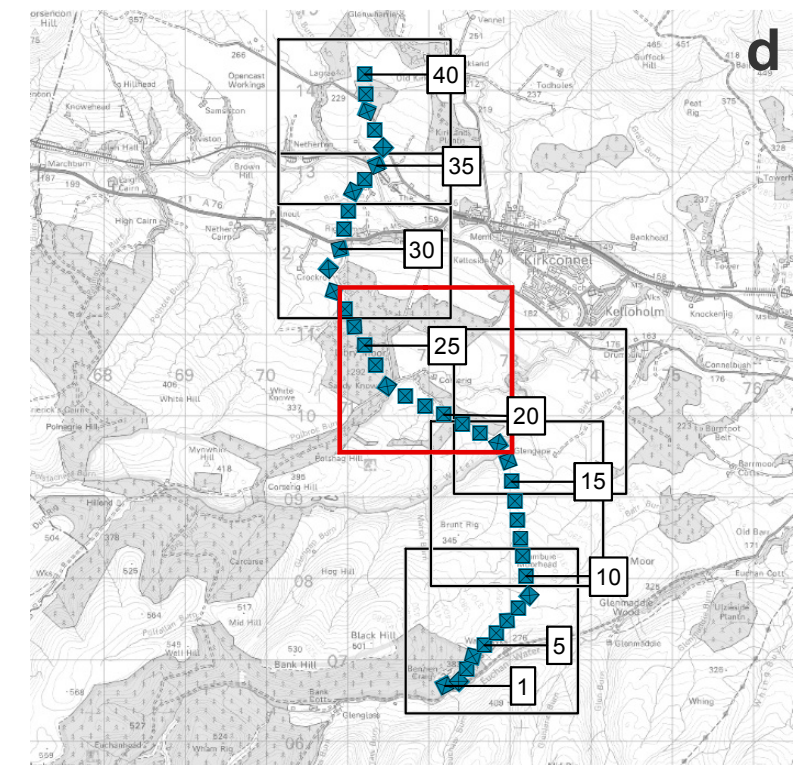
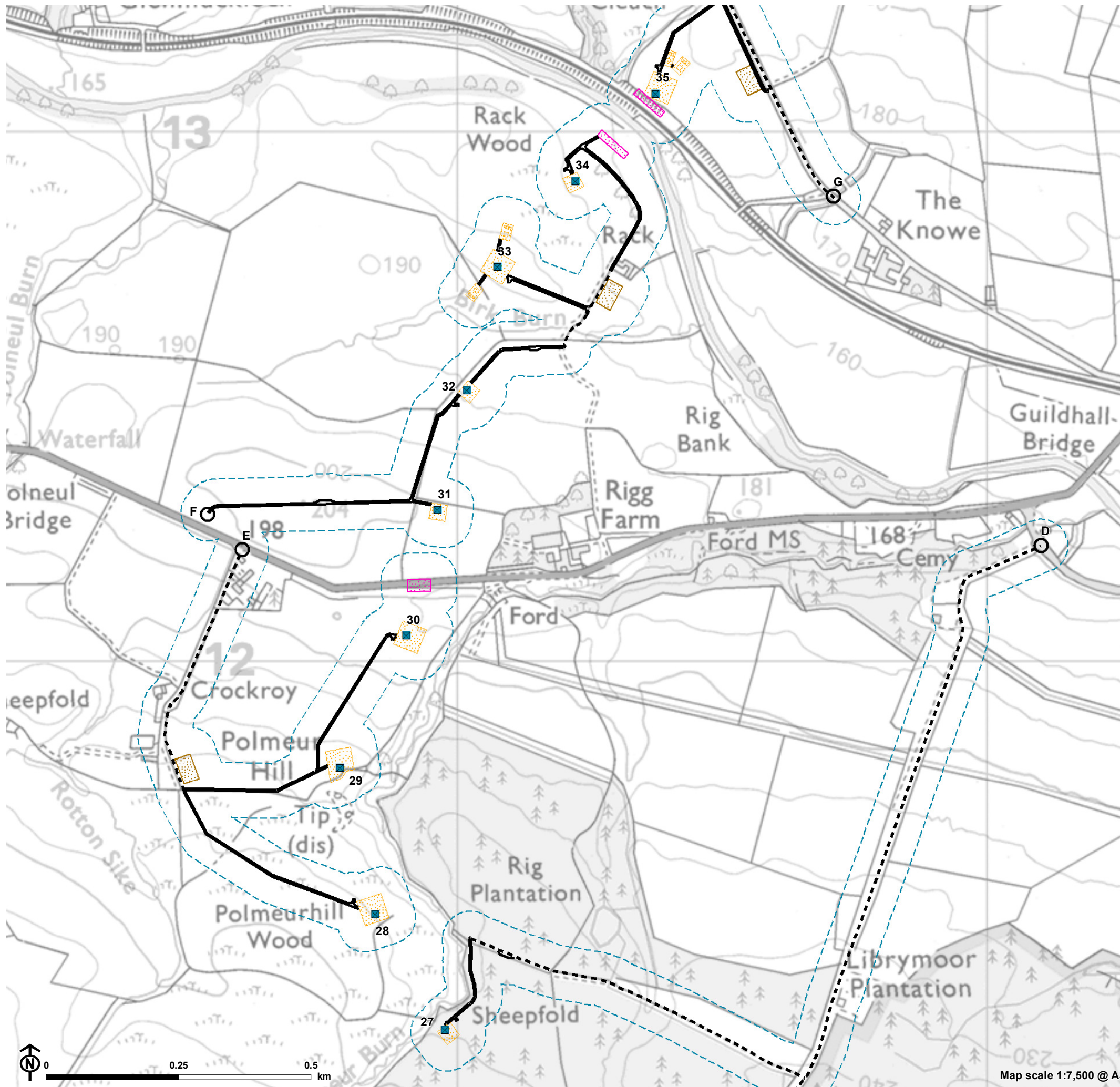
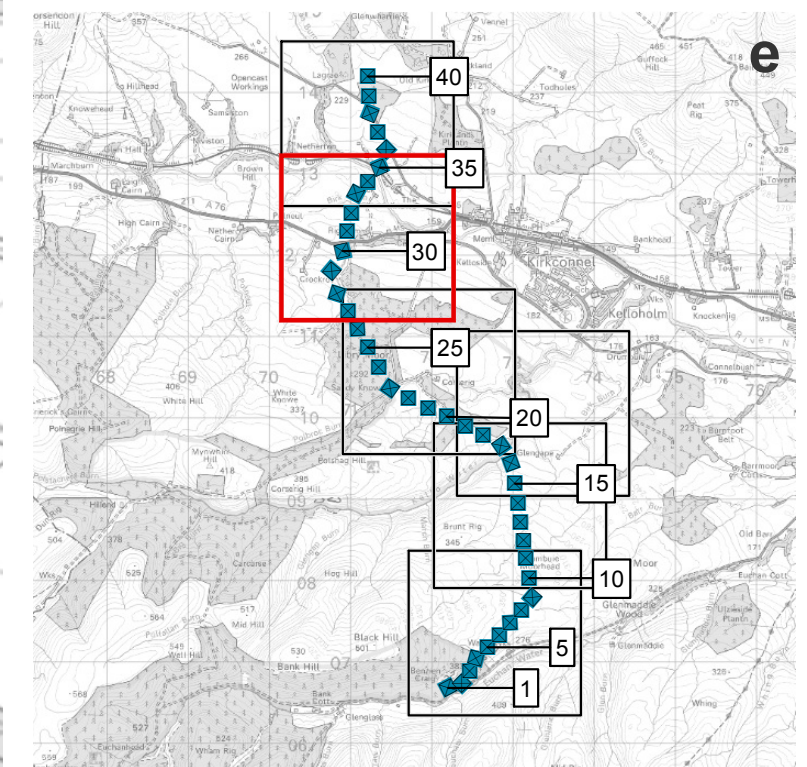


Figure 4.1e: The Glenmuckloch to Glenglass Reinforcement Project



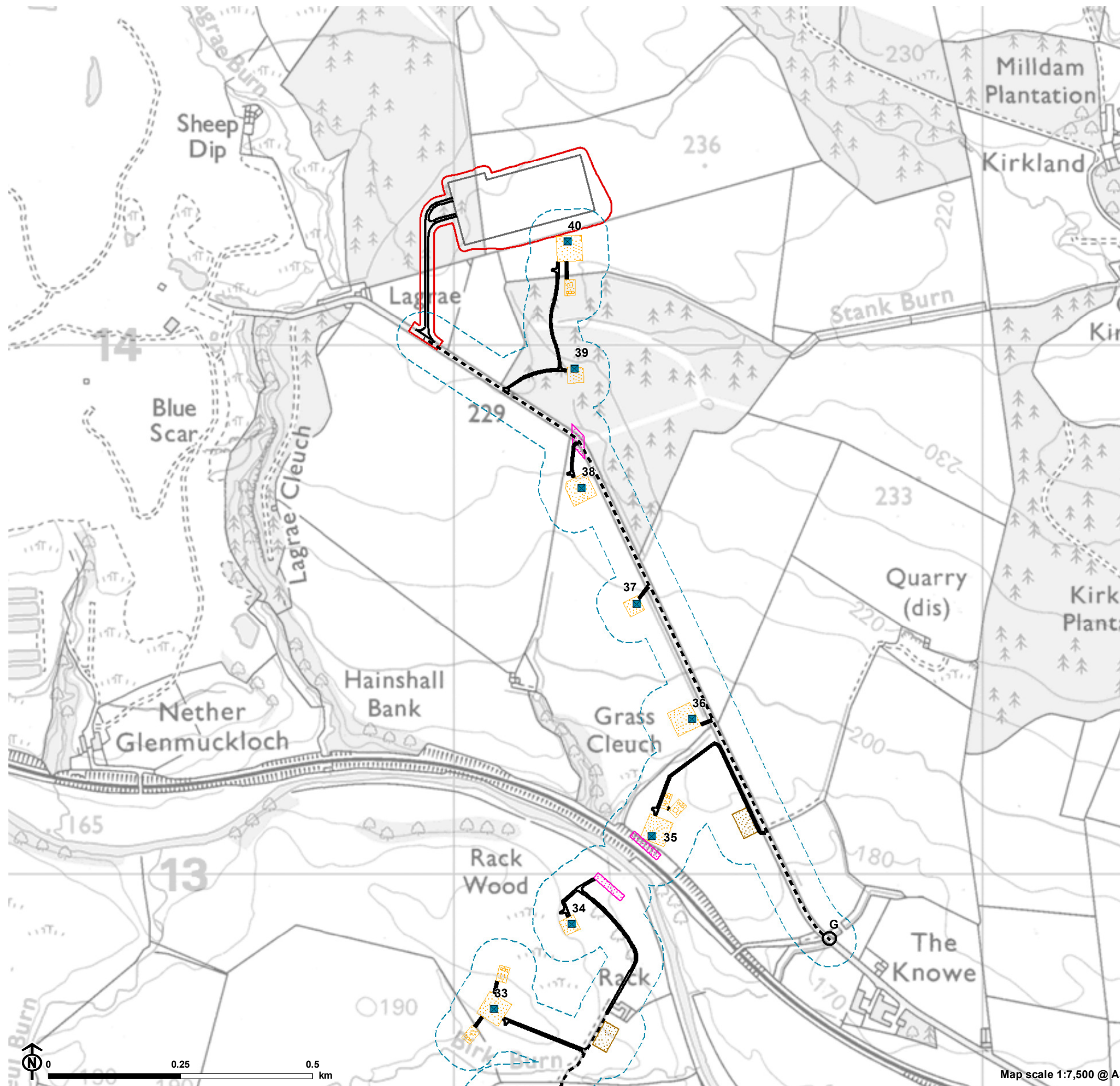
- Overhead line infrastructure**
- Tower (steel lattice tower)
 - ▨ Laydown area
 - ▨ Scaffolding
 - ▨ Working area
 - ▭ Infrastructure location allowance (ILA)
- Access to proposed towers and temporary work areas**
- - - Existing access track
 - New access track
 - Access point



0 0.25 0.5 km

Map scale 1:7,500 @ A3

Figure 4.1f: The Glenmuckloch to Glenglass Reinforcement Project



- Overhead line infrastructure**
- Tower (steel lattice tower)
 - ▨ Laydown area
 - ▨ Scaffolding
 - ▨ Working area
 - ▭ Infrastructure location allowance (ILA)
- Access to proposed towers and temporary work areas**
- Existing access track
 - New access track
 - Access point
- Proposed Glenmuckloch substation**
- ▭ Glenmuckloch substation
 - ▭ Glenmuckloch substation site boundary
 - Glenmuckloch substation new access track

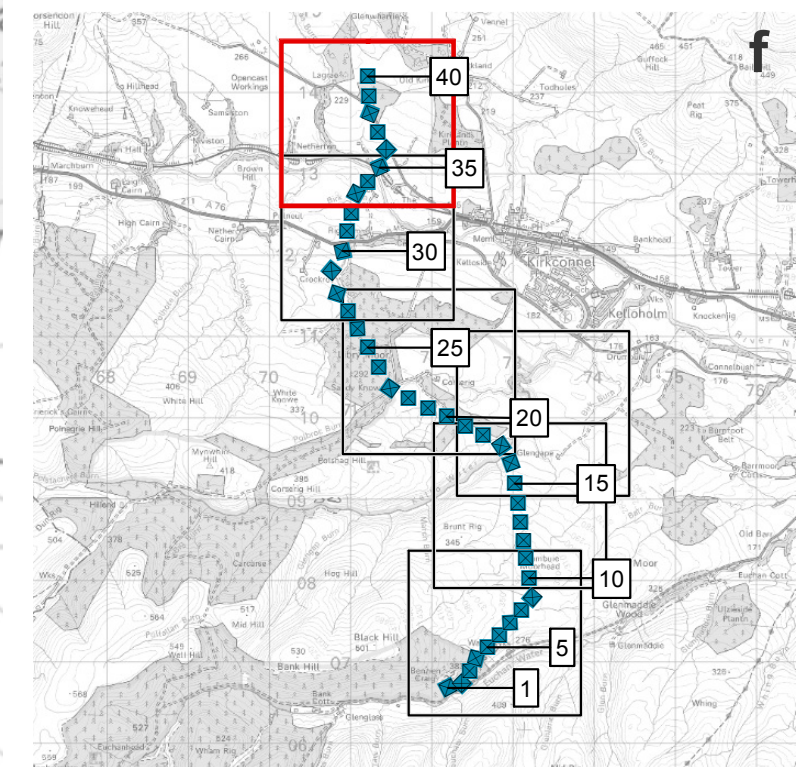
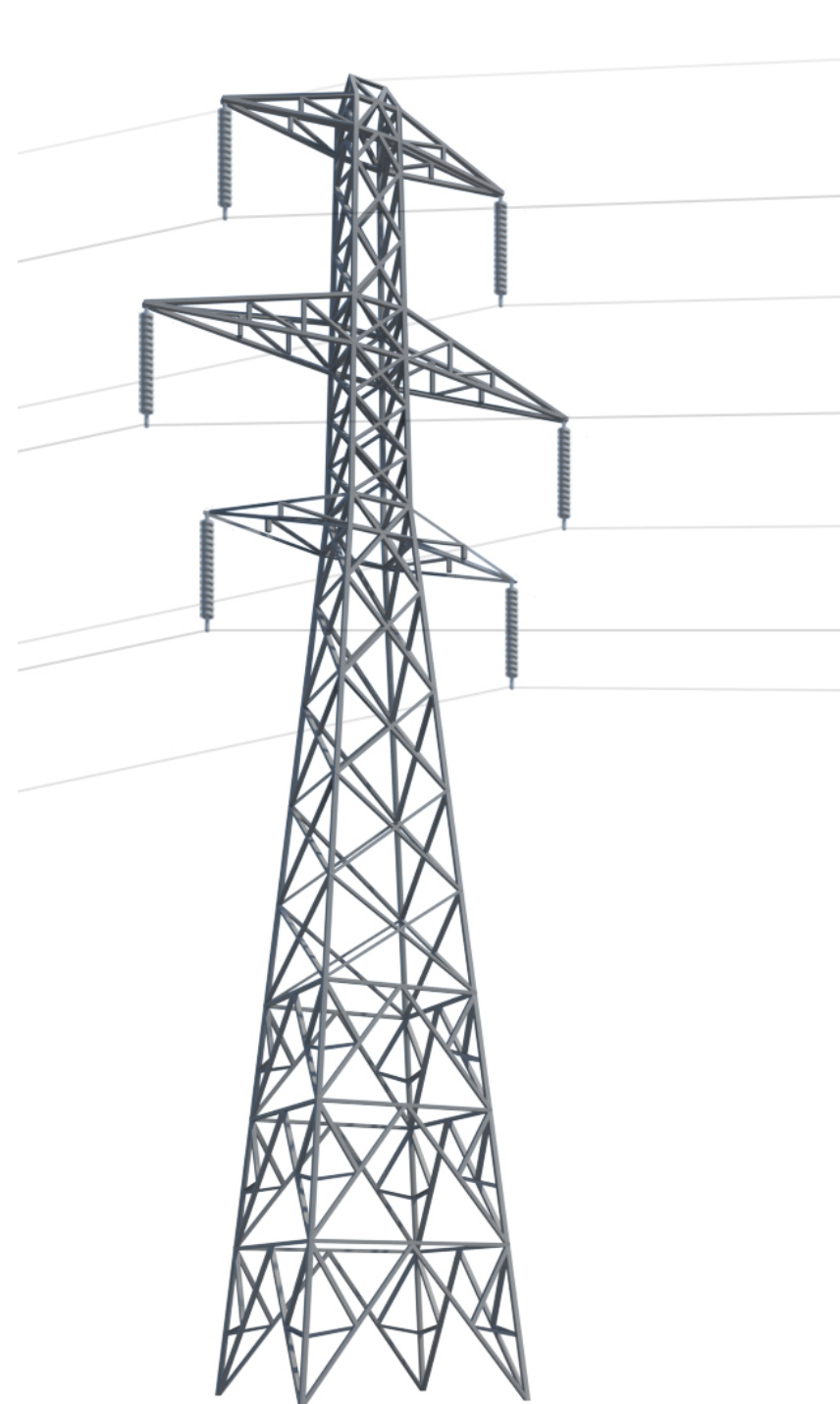
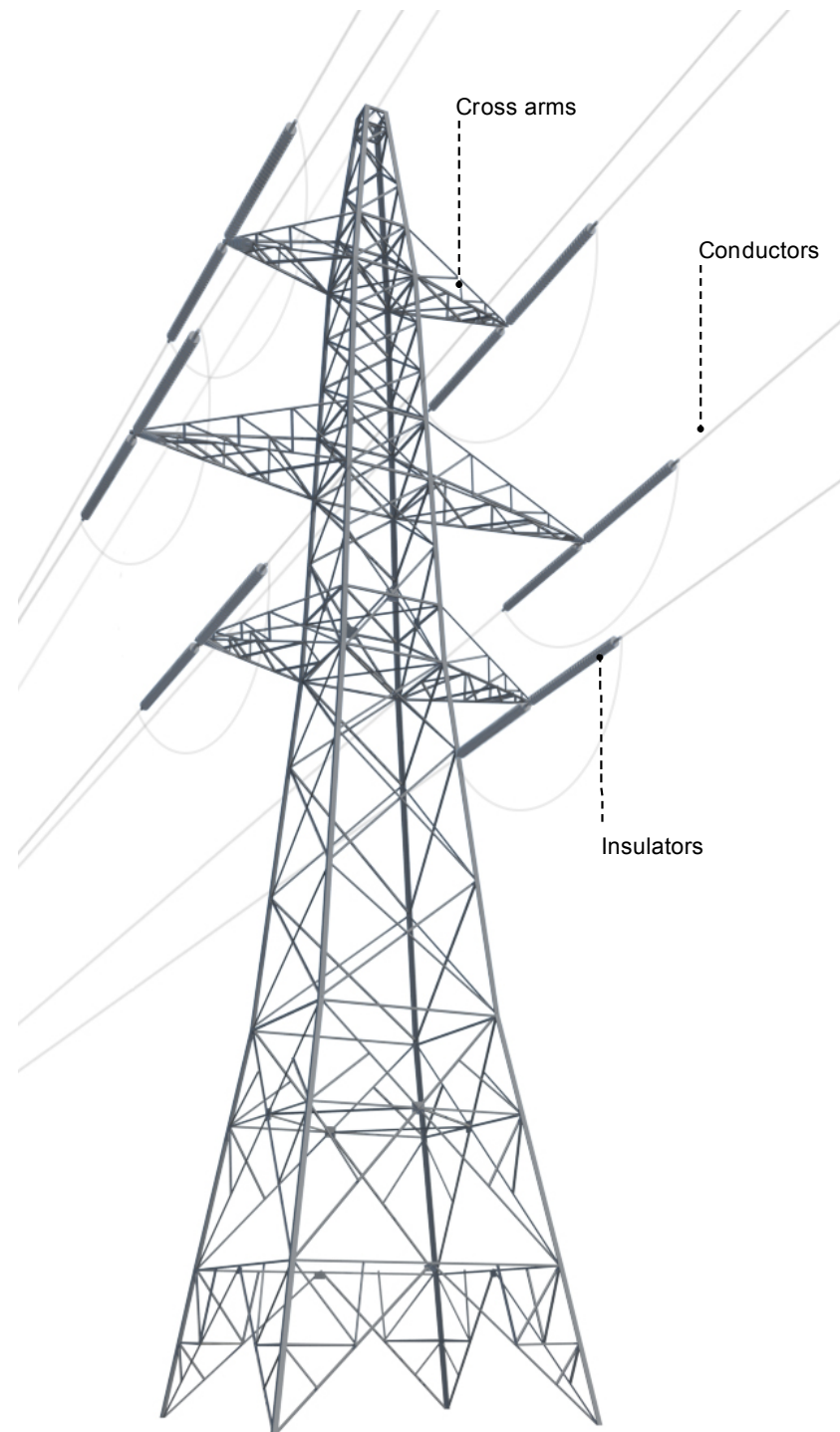


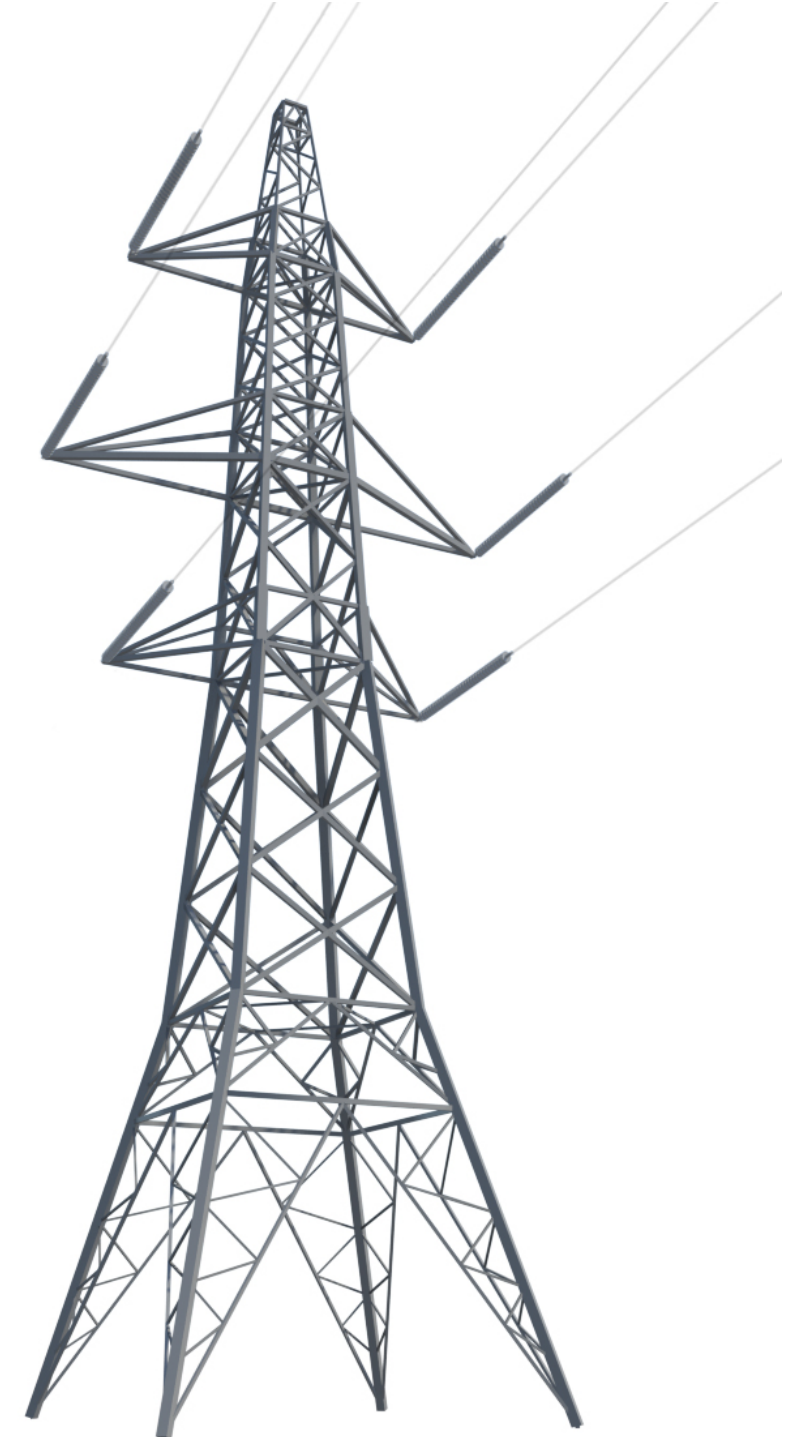
Figure 4.2: Component Parts of 132kV Steel Lattice Tower (L7)



Component parts of 132kV steel lattice tower L7: Suspension tower

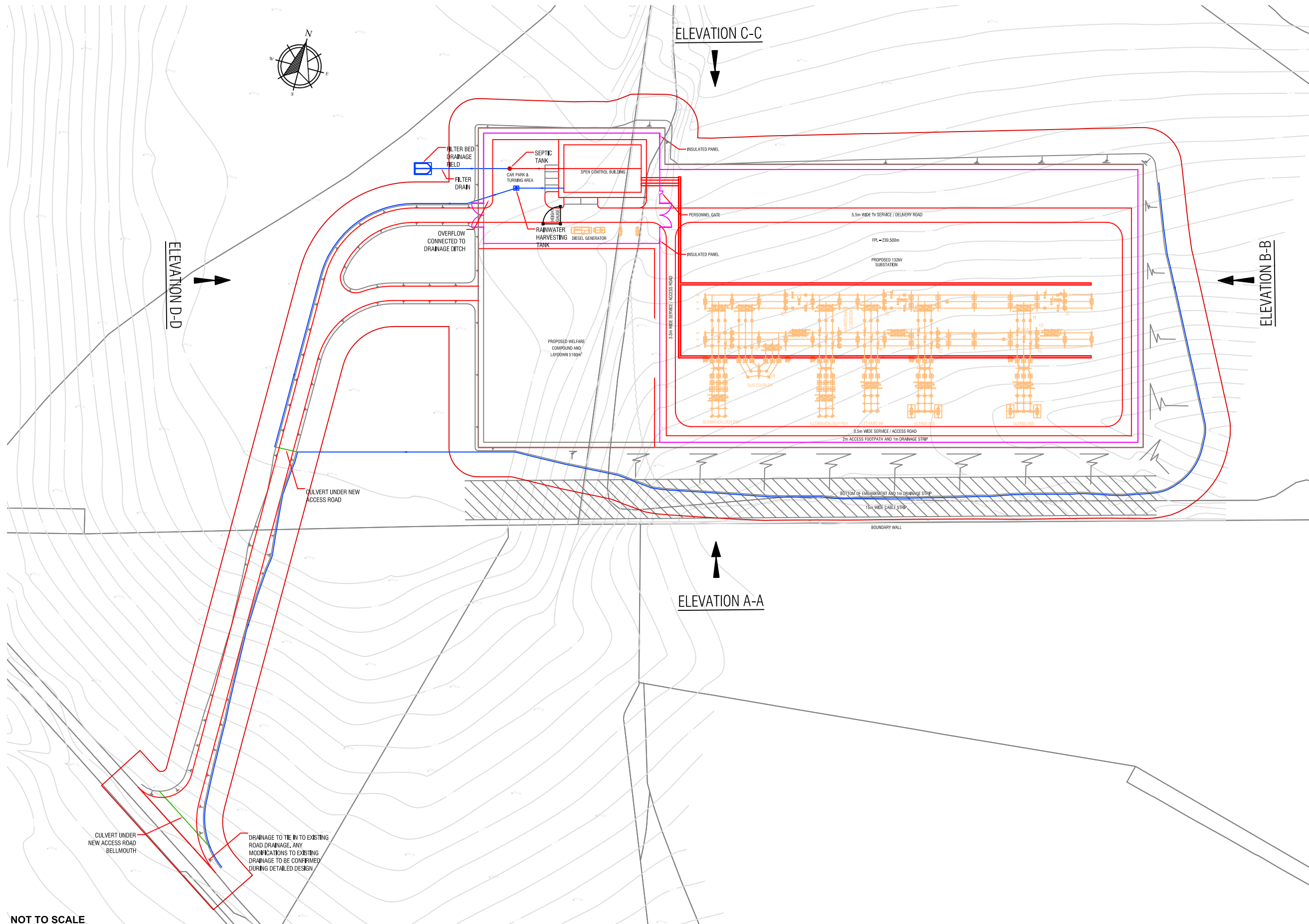


Component parts of 132kV steel lattice tower L7: Angle tower



Component parts of 132kV steel lattice tower L7: Terminal tower

Figure 4.3: Glenmuckloch Substation Site Layout and Site Drainage



NOT TO SCALE

THIS DRAWING HAS BEEN PRODUCED FOR DISCUSSION / DESIGN DEVELOPMENT PURPOSES ONLY
Drawing Reference: SP Energy Networks - CT1153-2-0000-DA-SPENK-0105 Rev0A and CT1153-2-0000-DA-SPENK-0101 Rev0B