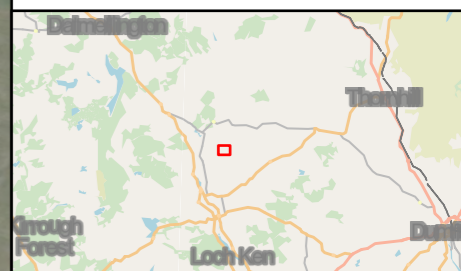


- Legend:**
- Overhead Line Alignment
 - Working Area
 - Proposed Preliminary Access
 - Proposed Indicative Pulling Position
 - Proposed Underground Cable to Substation
 - Proposed OHL Pole Locations
 - Proposed Indicative Construction Compound
 - ⋮ 250m Buffer
- NVC Habitats**
- Mires - M23 *Juncus effusus*/
acutiflorus-*Galium palustre* rush-
pasture
 - Mires - M25 *Molinia caerulea*-
Potentilla erecta mire
 - Mesotrophic Grasslands - MG9
Holcus lanatus-*Deschampsia*
cespitosa grassland
 - Calcifuguous Grasslands and
Montane Communities - U20
Pteridium aquilinum-*Galium saxatile*
community
 - Calcifuguous Grasslands and
Montane Communities - U4b *Festuca*
ovina-*Agrostis capillaris*-*Galium*
saxatile grassland, *Holcus lanatus*-
Trifolium repens sub-community
 - Non-NVC Community - Conifer
plantation woodland
 - Non-NVC Community - Clear fell
 - Non-NVC Community - New
broadleaf plantation

Coordinate System: British National Grid
 Projection: Transverse Mercator
 Datum: OSGB 1936
 Units: Meter



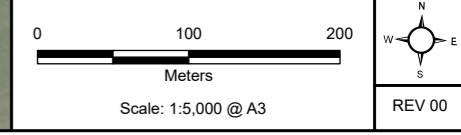
Rev	Date	Description	Drn	Chk	App
00	23/04/2024	First Draft	RS	EC	JR

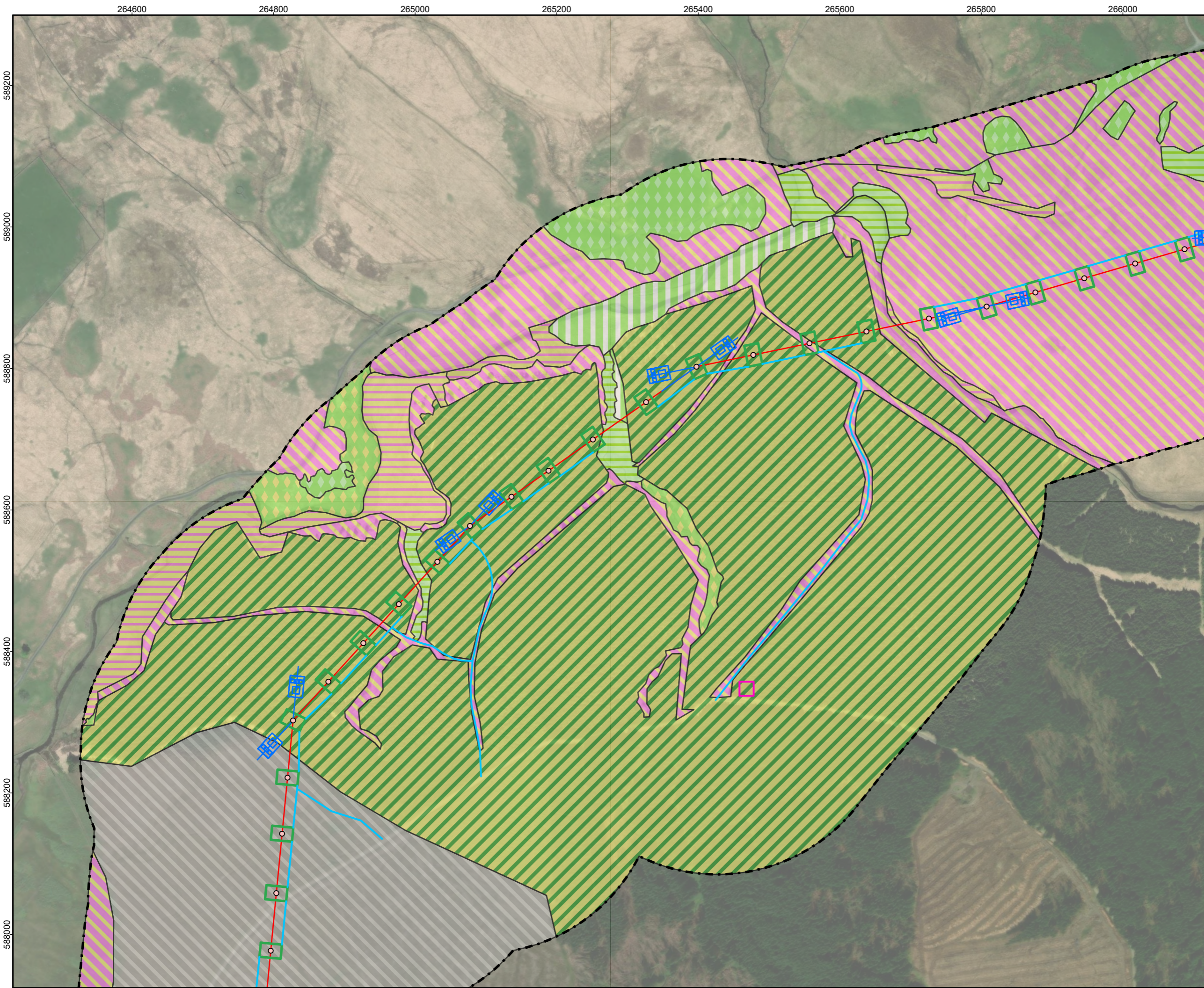
Troston OHL Grid Connection



TITLE: Figure 7.1: NVC Habitat Survey
 Page 1 of 4

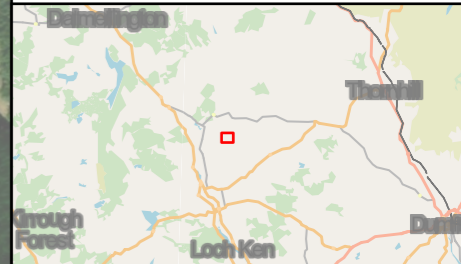
ID:Figure7.1_NVC_Habitat_Survey





- Legend:**
- Overhead Line Alignment
 - Working Area
 - Proposed Preliminary Access
 - Proposed Indicative Pulling Position
 - Proposed Underground Cable to Substation
 - Proposed OHL Pole Locations
 - Proposed Indicative Construction Compound
 - - - 250m Buffer
- NVC Habitats**
- Mires - M23 Juncus effusus/ acutiflorus-Galium palustre rush-pasture
 - Mires - M25 Molinia caerulea-Potentilla erecta mire
 - Mesotrophic Grasslands - MG9 Holcus lanatus-Deschampsia cespitosa grassland
 - Calcifuguous Grasslands and Montane Communities - U20 Peridium aquilinum-Galium saxatile community
 - Calcifuguous Grasslands and Montane Communities - U4b Festuca ovina-Agrostis capillaris-Galium saxatile grassland, Holcus lanatus-Trifolium repens sub-community
 - Calcifuguous Grasslands and Montane Communities - U5 Nardus stricta-Galium saxatile grassland
 - Non-NVC Community - Conifer plantation woodland
 - Non-NVC Community - Clear fell

Coordinate System: British National Grid
 Projection: Transverse Mercator
 Datum: OSGB 1936
 Units: Meter



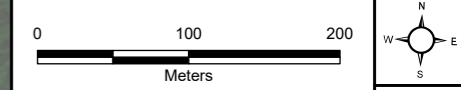
Rev	Date	Description	Drn	Chk	App
00	23/04/2024	First Draft	RS	EC	JR

Troston OHL Grid Connection

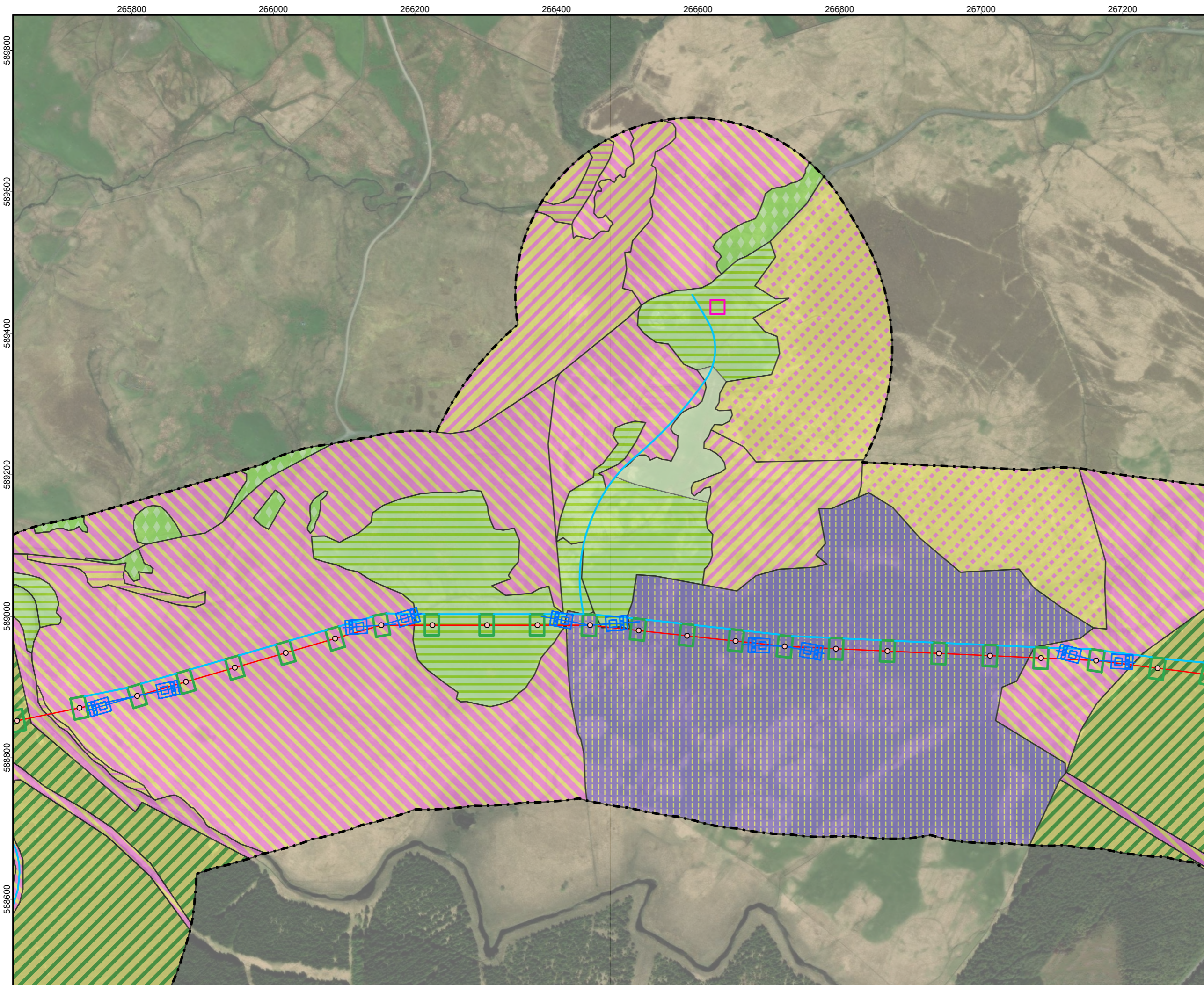


TITLE: Figure 7.1: NVC Habitat Survey
 Page 2 of 4

ID:Figure7.1_NVC_Habitat_Survey

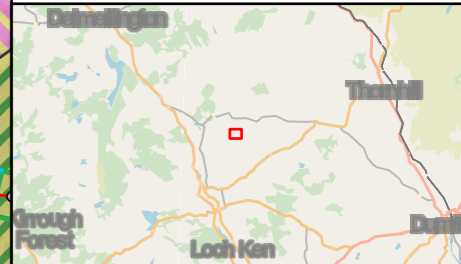


Scale: 1:5,000 @ A3
 REV 00



- Legend:**
- Overhead Line Alignment
 - Working Area
 - Proposed Preliminary Access
 - Proposed Indicative Pulling Position
 - Proposed Underground Cable to Substation
 - Proposed OHL Pole Locations
 - Proposed Indicative Construction Compound
 - 250m Buffer
- NVC Habitats**
- Mires - M15 *Scirpus cespitosus*-*Erica tetralix* wet heath
 - Mires - M18 *Erica tetralix*-*Sphagnum papillosum* raised and blanket mire
 - Mires - M23 *Juncus effusus*/
acutiflorus-*Galium palustre* rush-pasture
 - Mires - M25 *Molinia caerulea*-
Potentilla erecta mire
 - Calcifugous Grasslands and Montane Communities - U4b *Festuca ovina*-*Agrostis capillaris*-*Galium saxatile* grassland, *Holcus lanatus*-*Trifolium repens* sub-community
 - Calcifugous Grasslands and Montane Communities - U5 *Nardus stricta*-*Galium saxatile* grassland
 - Calcifugous Grasslands and Montane Communities - U6 *Juncus squarrosus*-*Festuca ovina* grassland
 - Mosaic Community - M25 *Molinia caerulea*-*Potentilla erecta* mire and U5 *Nardus stricta*-*Galium saxatile* grassland
 - Non-NVC Community - Conifer plantation woodland

Coordinate System: British National Grid
 Projection: Transverse Mercator
 Datum: OSGB 1936
 Units: Meter



Rev	Date	Description	Drn	Chk	App
00	23/04/2024	First Draft	RS	EC	JR

Troston OHL Grid Connection

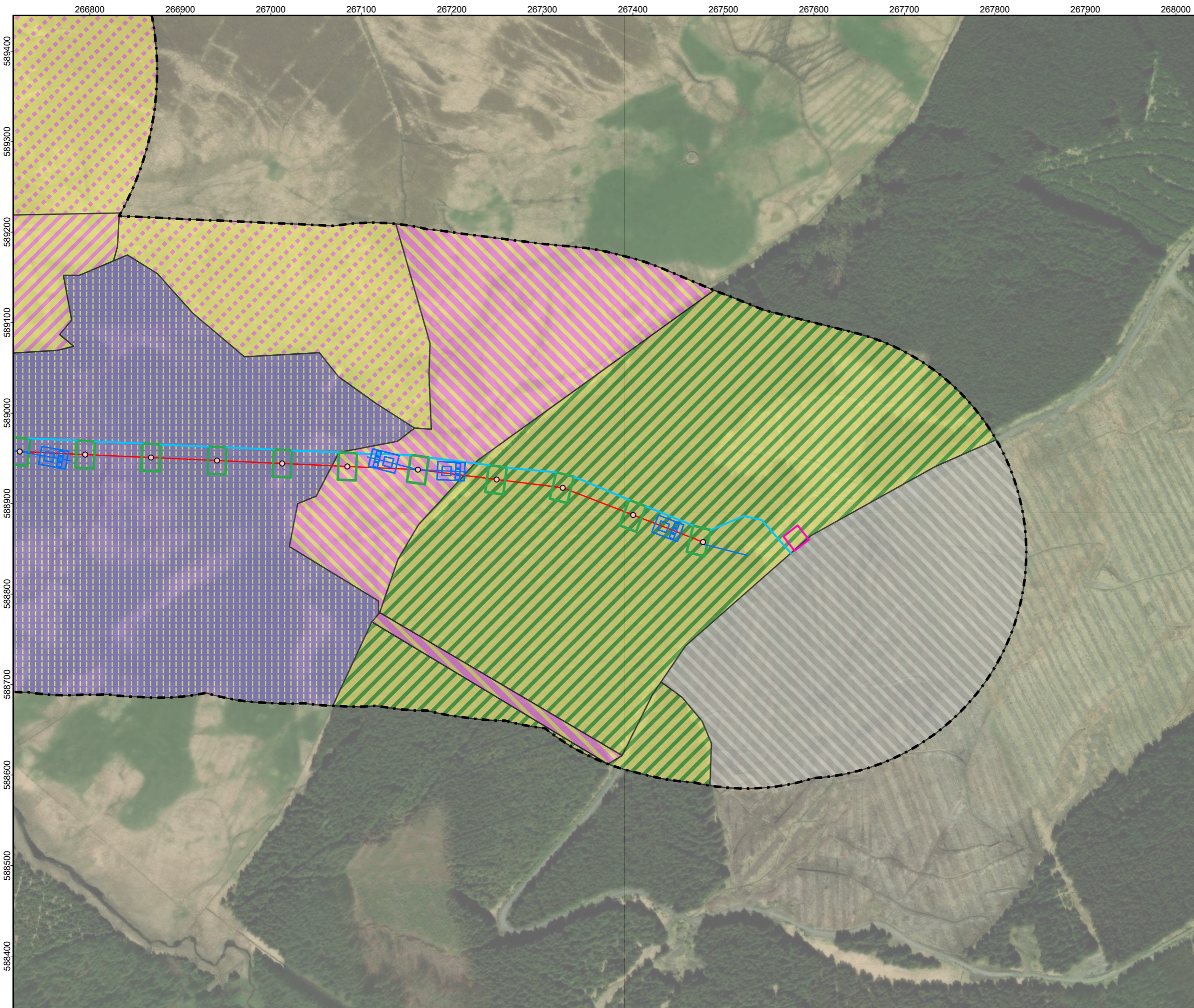
RSK

TITLE: Figure 7.1: NVC Habitat Survey
 Page 3 of 4

ID:Figure7.1_NVC_Habitat_Survey

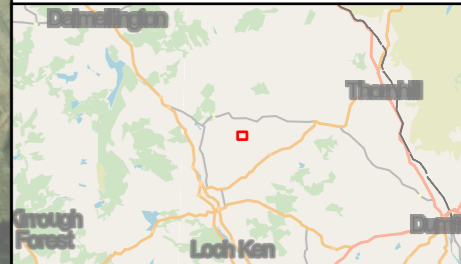
Scale: 1:5,000 @ A3

REV 00



- Legend:**
- Overhead Line Alignment
 - Working Area
 - Proposed Preliminary Access
 - Proposed Indicative Pulling Position
 - Proposed Underground Cable to Substation
 - Proposed OHL Pole Locations
 - ▭ Proposed Indicative Construction Compound
 - - - 250m Buffer
- NVC Habitats**
- Mires - M15 *Scirpus cespitosus*-*Erica tetralix* wet heath
 - Mires - M18 *Erica tetralix*-*Sphagnum papillosum* raised and blanket mire
 - Mires - M25 *Molinia caerulea*-*Potentilla erecta* mire
 - Calcifuguous Grasslands and Montane Communities - U4b *Festuca ovina*-*Agrostis capillaris*-*Galium saxatile* grassland, *Holcus lanatus*-*Trifolium repens* sub-community
 - Mosaic Community - M25 *Molinia caerulea*-*Potentilla erecta* mire and U5 *Nardus stricta*-*Galium saxatile* grassland
 - Non-NVC Community - Conifer plantation woodland
 - Non-NVC Community - Clear fell

Coordinate System: British National Grid
 Projection: Transverse Mercator
 Datum: OSGB 1936
 Units: Meter



Rev	Date	Description	Drn	Chk	App
00	23/04/2024	First Draft	RS	EC	JR

Troston OHL Grid Connection



TITLE: Figure 7.1: NVC Habitat Survey
 Page 4 of 4

ID: Figure7.1_NVC_Habitat_Survey

