

How to make your views known?

Our consultation will run for two weeks from **15th August until 29th August 2022**.

The closing date for you to send your responses to us is midnight on **Monday 5th September 2022**. Following this date, the information will remain accessible online and available to download.

Please find below the best ways to find out more or talk to us.



Visit the online virtual exhibition from 15th August 2022:

www.GlenglassSubstationExtension.co.uk

We have prepared an online virtual consultation to replicate an in-person village hall experience. Here you can see detailed maps, read about the proposal, download project information as a pdf, and provide feedback via the online survey.



Visit the website: www.spenergynetworks.co.uk/GlenglassSubstationExtension

Our dedicated website has lots more information. You can view or download all the project documents, including this leaflet, on the website.



Email us: glenglassgisprojectmanager@spenergynetworks.co.uk

What happens next?

SP Energy Networks places great importance on the effect its work may have on the environment and local communities and is keen to hear the views of local people to help develop the project in the best way.

Following consultation, we will examine the responses received before finalising our proposal. We will produce a Pre-Application Consultation (PAC) Report detailing the feedback received and how this has been taken into account in the design of the proposal. This report will accompany our planning application to Dumfries and Galloway Council, which we expect to submit in October 2022.

Subject to receiving planning consent, work will start on site approximately April 2023 and should finish around March 2024.

Thank you for taking the time to read this leaflet.



**SP ENERGY
NETWORKS**

Glenglass Substation Extension

Public Consultation Leaflet

Background

The proposed Glenglass substation extension is located approximately 5km south of Kirkconnel and will be situated to the east of the existing 132kV Glenglass substation.

We need to extend the Glenglass substation to facilitate the current contracted generation capacity from six renewable energy developments connecting to the substation. It would also accommodate the extra equipment needed to operate the new overhead lines proposed as part of the Glenmuckloch to Glenglass 132kV Reinforcement Project (proposed new overhead line approximately 10km in length).

The Glenglass extension is separate to the Glenmuckloch to Glenglass 132kV Reinforcement Project and would allow work to commence on the substation extension prior to the granting of Section 37 consent for the wider Reinforcement project. The substation extension would be needed regardless of whether or not the new 132kV overhead line is built.

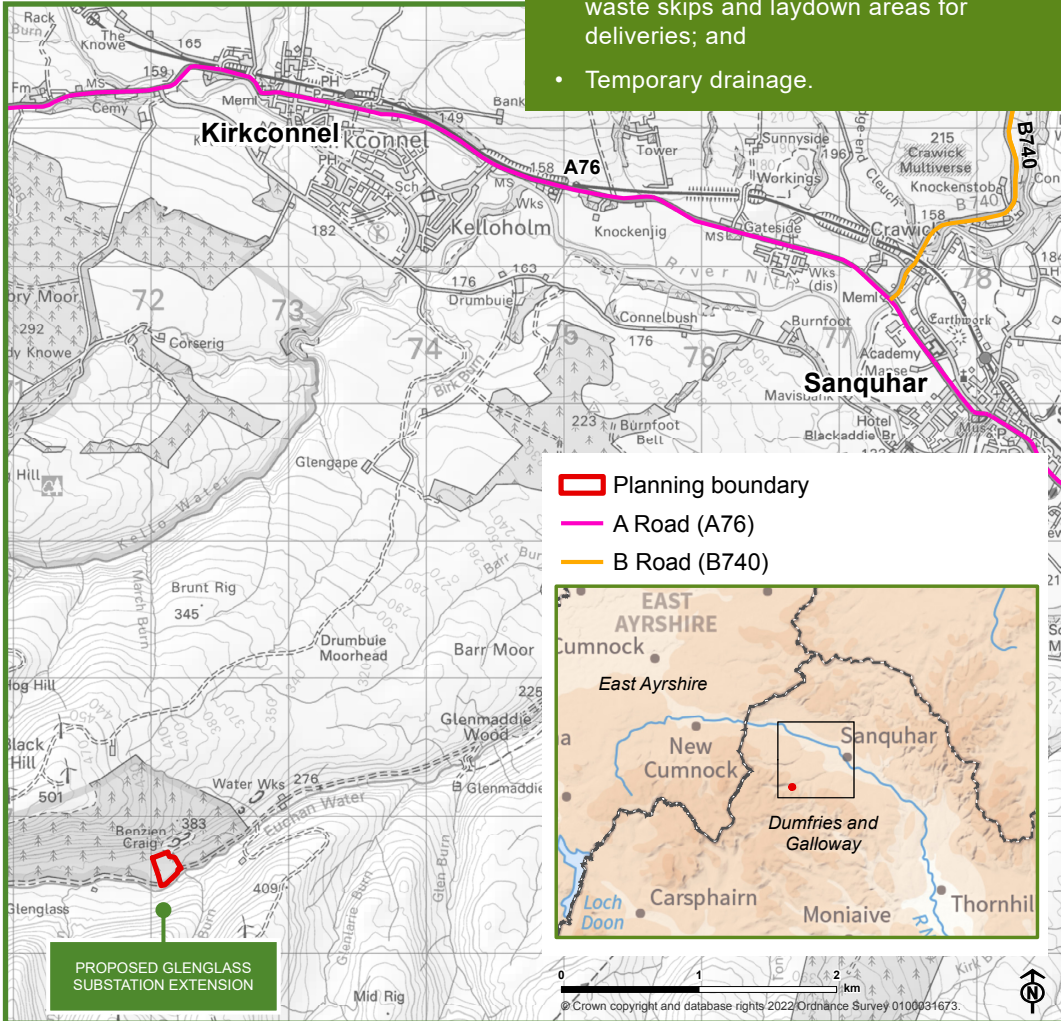
SP Energy Networks is part of the ScottishPower Group of companies and owns three regulated businesses in the UK. These businesses are 'asset owner' companies

holding the regulated assets and Electricity Transmission and Distribution licenses of ScottishPower. As part of this, SP Energy Networks operates, maintains and develops the network of cables, overhead lines and substations which transport electricity to connected homes and businesses in Southern and Central Scotland. SP Energy Networks has a legal duty to keep its network up-to-date to safeguard electricity supplies. SP Energy Networks also has a duty to provide a connection for new generation to the wider electricity transmission network.

We will be applying to Dumfries and Galloway Council for consent for the Glenglass substation extension under the Town and Country Planning (Scotland) Act 1997, as amended. Because Glenglass operates at 132kV, our proposed extension is classed as a national development in terms of National Planning Framework 3. This means we need to carry out pre-application consultation and submit a design and access statement with our application.

A full Environmental Impact Assessment (EIA) is not required for the substation extension, but we will carry out an appraisal of the potential environmental effects of the project, and submit a report with the planning application.

What we are proposing?



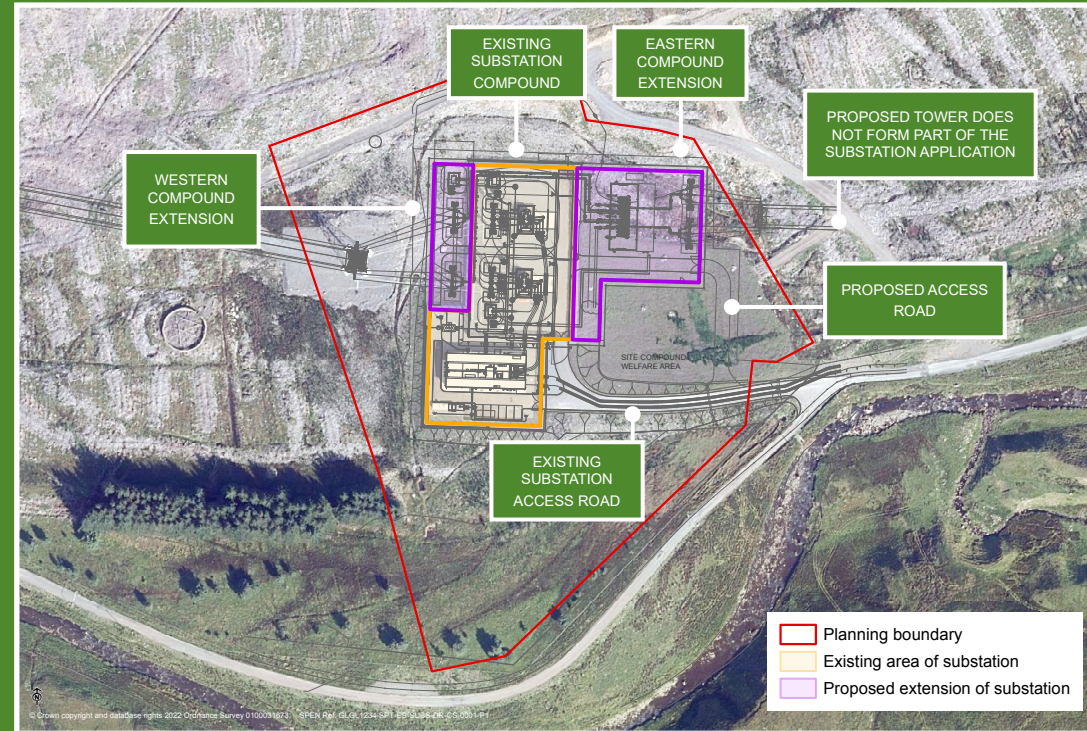
Substation Extension

This will include:

- A single-storey gas insulated substation housing 132kV switch gear;
- External steel security fencing, including an extension on the western boundary of the site;
- A new 5m wide access road extension to the existing access road to the west of the existing substation;
- Temporary welfare/construction compound area which will provide accommodation for cabins, car parking, waste skips and laydown areas for deliveries; and
- Temporary drainage.

Glenglass Substation Extension

The proposed extension will comprise a single storey gas insulated substation (approximately 25.737m (l) x 16.961m (w) x 9.574m (h)) housing 132kV switch gear, primarily to the east of the existing Glenglass substation site as illustrated below. The proposed extension site lies within a felled section of commercial forestry, at Eucharhead forest.



What we would like your views on?

As part of the consultation we would particularly like your views on:

- 1 The proposed substation extension
- 2 Any other issues

Please note comments at this stage are informal comments to SP Energy Networks. An opportunity to comment formally to Dumfries and Galloway Council will follow at a later stage in the process, following submission of the planning application.