



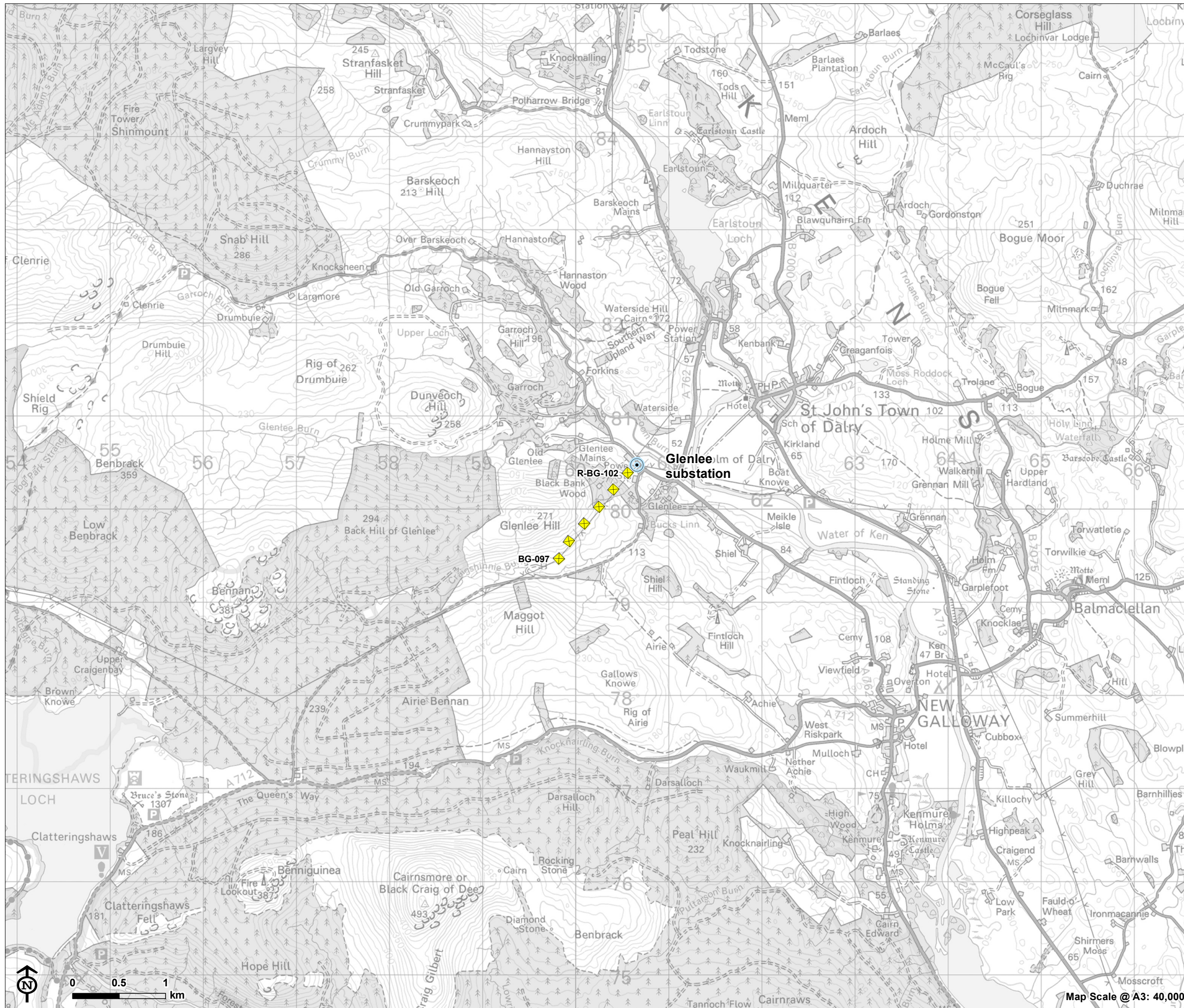
KTR Project Section 37

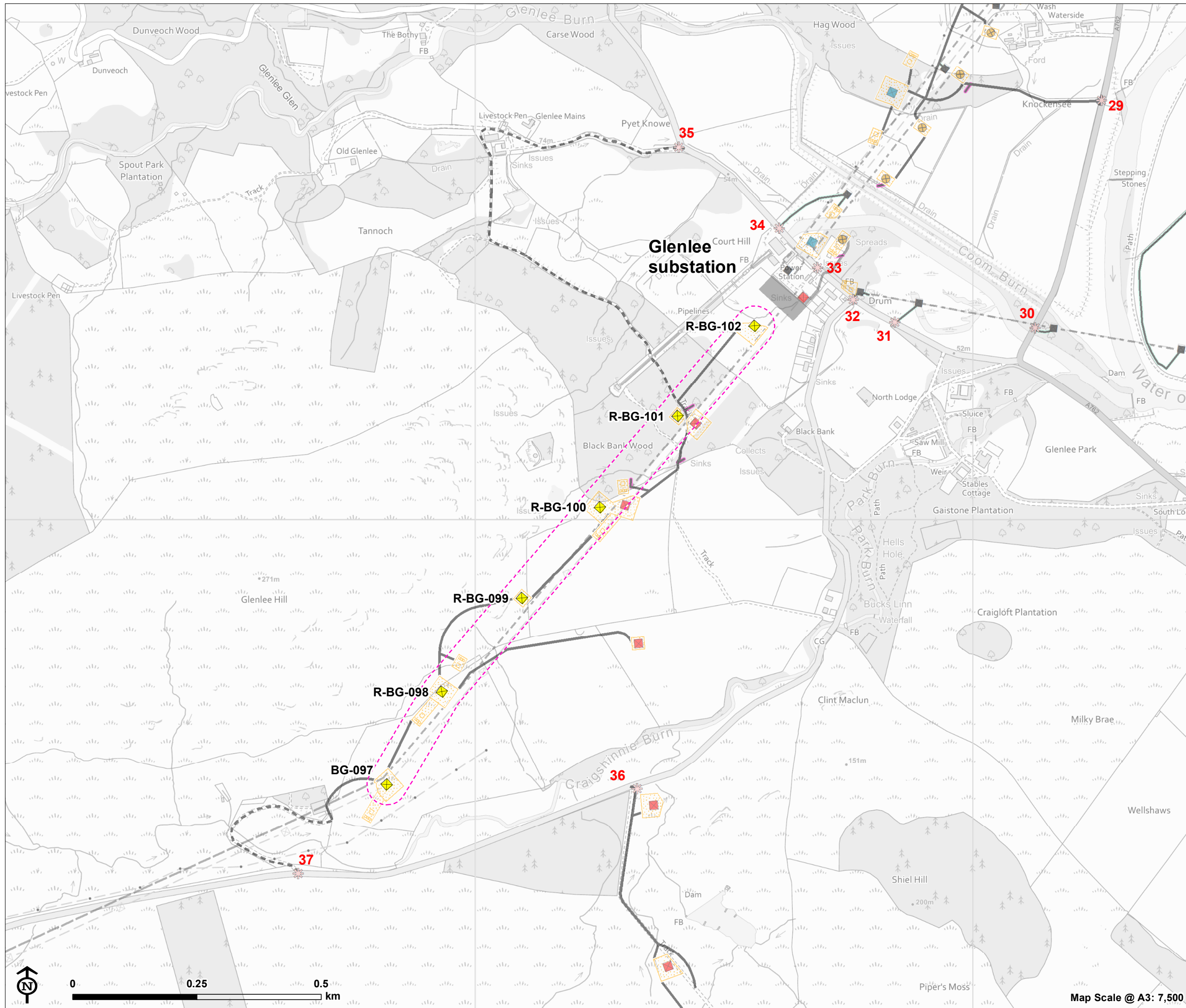
KTR Section 37 BG Route Deviation - Location Plan

-  Substation and hydro electricity generating station
-  BG route deviation (steel lattice tower)

Note

Pole BG-097 grid reference: NX598795
Pole R-BG102 grid reference: NX606804





KTR Project Section 37

KTR Section 37 BG Route Deviation - Site Plan

- Overhead line infrastructure**
- BG route deviation (steel lattice tower)
 - Polquhany to Glenlee via Kendon (steel lattice tower)
 - Earlstoun to Glenlee (wood pole)
 - Glenlee to Tongland (steel lattice)
 - Existing tower for removal
 - Existing 132kV overhead line to be removed (following construction of the KTR Project)
 - Existing network
- Access to proposed towers**
- Existing access
 - New access
 - Timber extraction spur
- Access to towers for removal**
- New access
 - Access point
 - Working area
 - 80m Wayleave
 - Glenlee Substation extension

Note:
 Pole BG-097 grid reference: NX598795
 Pole R-BG102 grid reference: NX606804

