

Heathland Overhead Line Project

Introduction

The Scottish Government has set a target of Net Zero greenhouse gas emissions by 2045, meaning that Scotland's contribution to climate change would end, definitively, in one generation.

This huge change means we need to upgrade Scotland's electricity transmission network.

Our upgrade work includes a new transmission line which will provide a grid connection for the consented Heathland Wind Farm to Wishaw Substation. To comply with its statutory and license obligations, SP Energy Networks must provide this connection.

Following the first round of consultation and further study, the route has been identified (see map below).

We would like to invite everyone to view the information on our website and to attend one of the public consultation events on **Monday 20th May** (afternoon, 3 to 7 pm) and **Thursday 23rd May** (evening, 3 to 7 pm).

This leaflet is to provide some information on the project and how you can give us your views, either by attending one of our consultation events, visiting our virtual consultation room or contacting us directly.

The Proposal

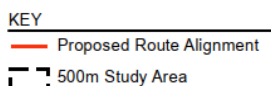
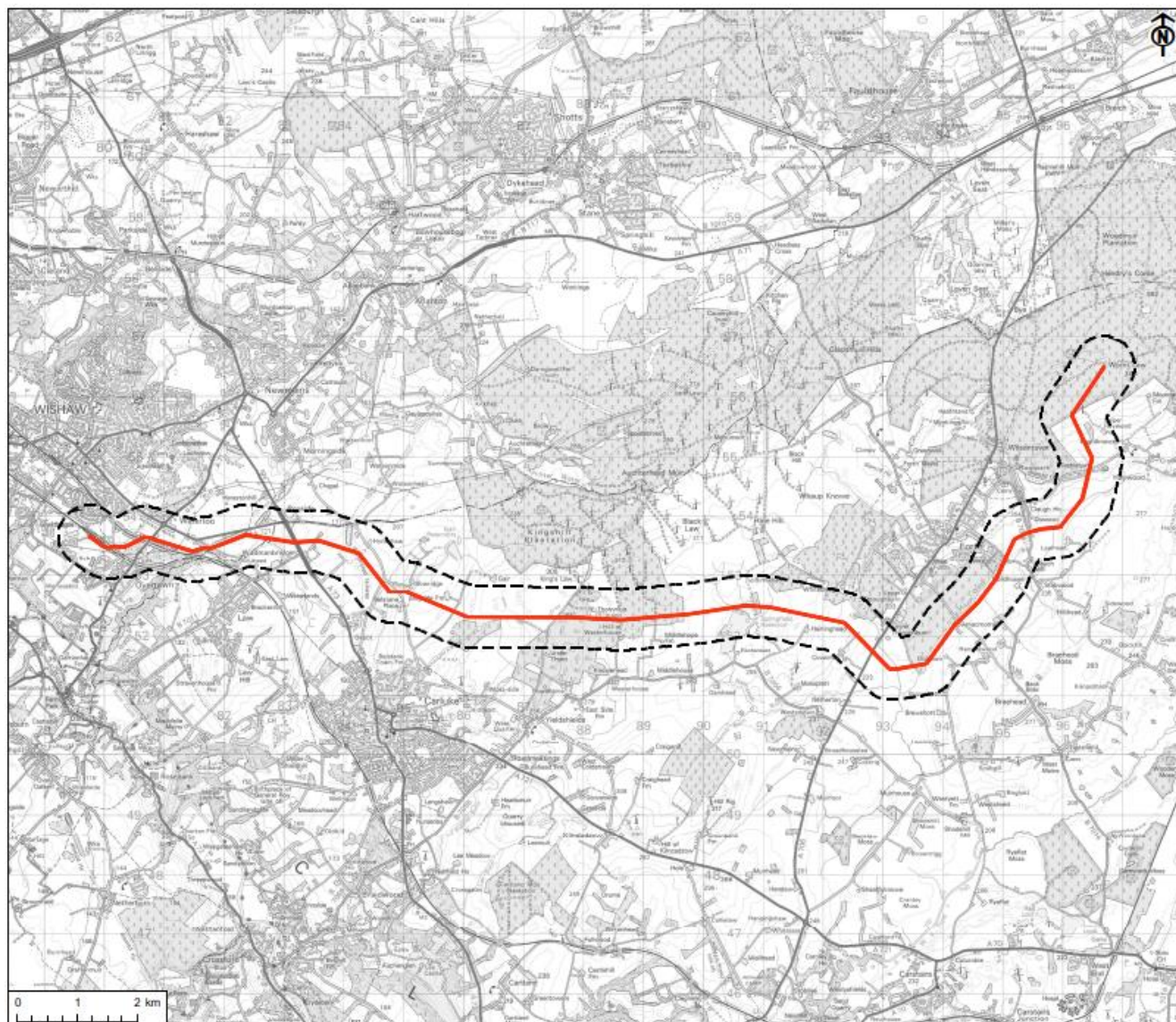
The proposal involves the construction of a single circuit 132 kilovolt (kV) overhead line carried on Trident wood poles with galvanised steelwork cross-arms supporting aluminium conductors on insulators.

The line will connect the consented Heathland Wind Farm to Wishaw Substation and will provide a connection to the transmission network.

The overhead line would be situated across the authority boundaries of South Lanarkshire and North Lanarkshire and would be approximately 22km in length.



The Route



Following the first round of consultation and further study, the route above has been identified. The route starts from the consented Heathland Wind Farm and ends at Wishaw Substation, with the final 800m (approx.) of the line at Wishaw being an underground cable route.

The route avoids the majority of constraints associated with wind farm developments in the area and limits woodland clearance. It has also been selected due to its distance from national and UK ecological designations at the Clyde Valley Woods and areas of ancient woodland.

What would it look like?

Whilst the wood poles have a standard height above ground of 15m, these can be extended or reduced in height to between 11 to 16m where circumstances dictate.

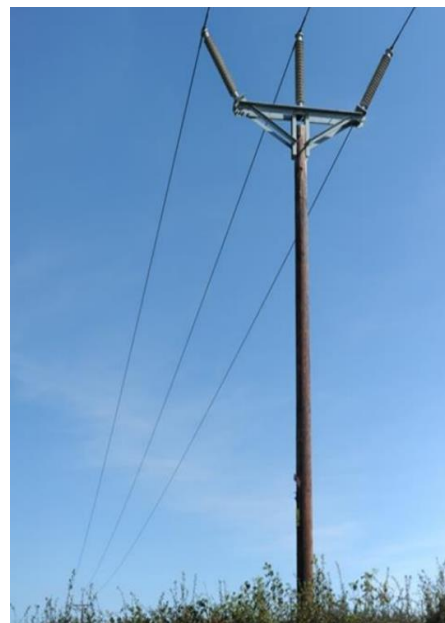
The distance between wood poles will average between 80m to 120m but can be increased if there is a requirement to span a larger distance due to the presence of a feature in the landscape, such as a river or loch.

We want to hear your views

SP Energy Networks attaches great importance to the effect our work may have on the environment and local communities. We value community engagement and are always keen to listen to what people have to say, as this feedback often plays an important part in the design evolution of a project. We want to hear what local people think about our plans, to help us develop the project in the best way possible.

Please come along to one of our public exhibitions, where you can see our plans in more detail and ask questions of the project team.

Please note that any comments made during this Consultation Stage are not representations to the Scottish Government Energy Consents Unit, which will determine any subsequent application for consent. Following the submission of the Section 37 application, interested parties will have the opportunity to make representations to the Scottish Government on this proposal.



Date	Location	Website
Monday 20 th May 2024, 3pm to 7pm	Willie Waddell Community Centre, Main St, Forth, Lanark ML11 8AA	www.slleisureandculture.co.uk/info/160/forth_sportscommunity_centre/596/contact_details
Thursday 23 rd May 2024, 3pm to 7pm	Jim Foley Community Centre, John Street, Wishaw, ML2 7TG	https://www.culturenl.co.uk/venue-hire/wishaw-and-district-area/jim-foley-community-centre/

Can't make it?

If you can't make the public exhibitions above, we also have a virtual consultation room. This provides the opportunity to view all the material from the public exhibitions and give feedback to us. This will be live from Monday 13th May to Friday 21st June and available at: <https://heathlandgridconnection.consultation.ai/>



Email: heathlandprojectmanager@spenergynetworks.co.uk



Telephone: **07516 461129** (there will be an option to leave a voicemail with your comments)



Write to postal address at: **Heathland Project Manager, Land and Planning Team, SP Energy Networks, 55 Fullarton Drive, Glasgow, G32 8FA**



Fill in the feedback form on the virtual consultation room web page at: <https://heathlandgridconnection.consultation.ai/>

What happens next?

After considering feedback received in this second round of consultation, we will finalise our proposal and submit a Section 37 consent application to the Scottish Government's Energy Consents Unit for consideration by the Scottish Ministers.

As part of the application process there will be an opportunity for you to make formal representations to the Scottish Government's Energy Consents Unit before a decision is made by Scottish Ministers on our application.