



Figure 1.1: Existing OHL Network

- Substation
- 132kV overhead line
- 400kV overhead line

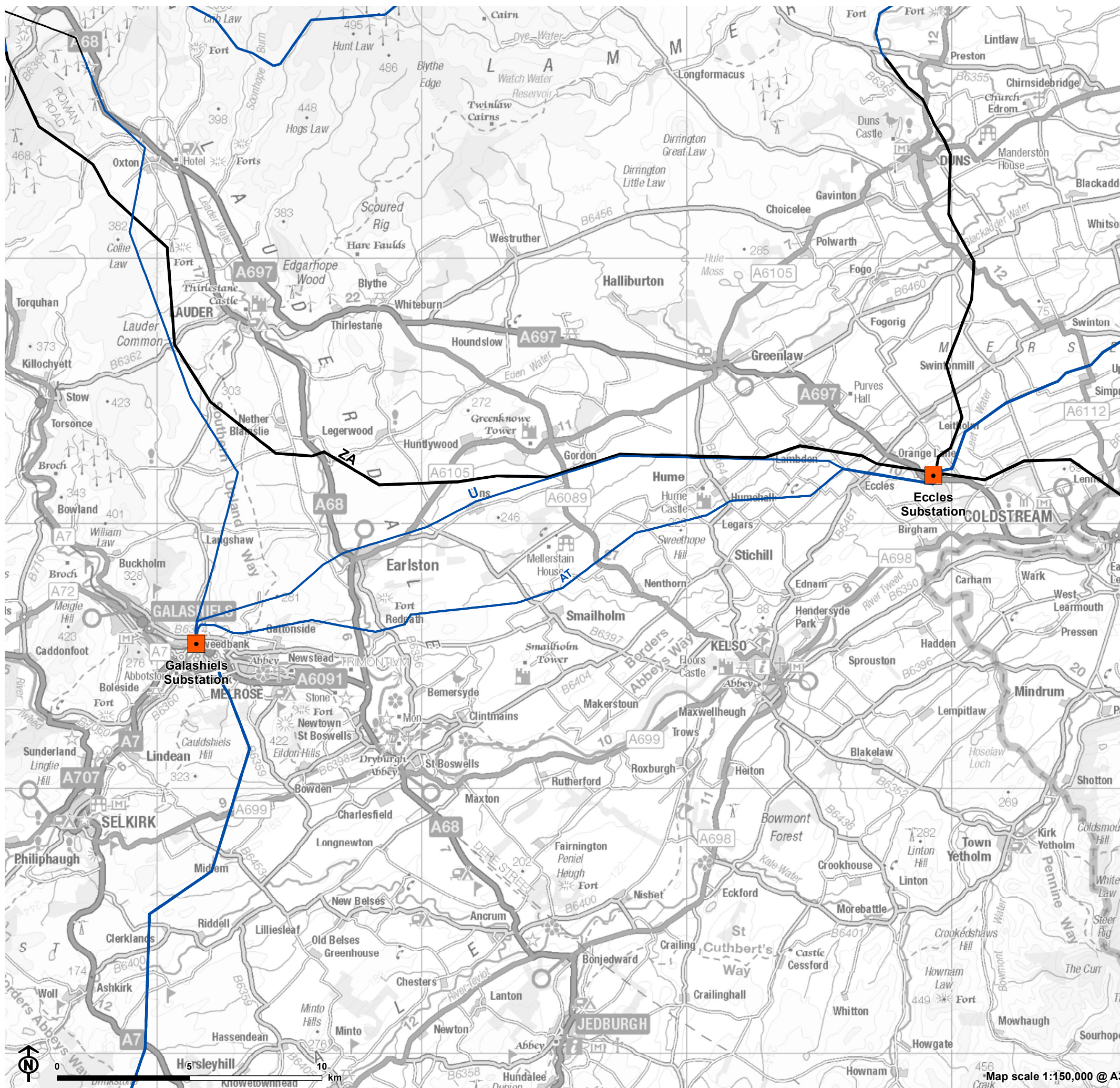
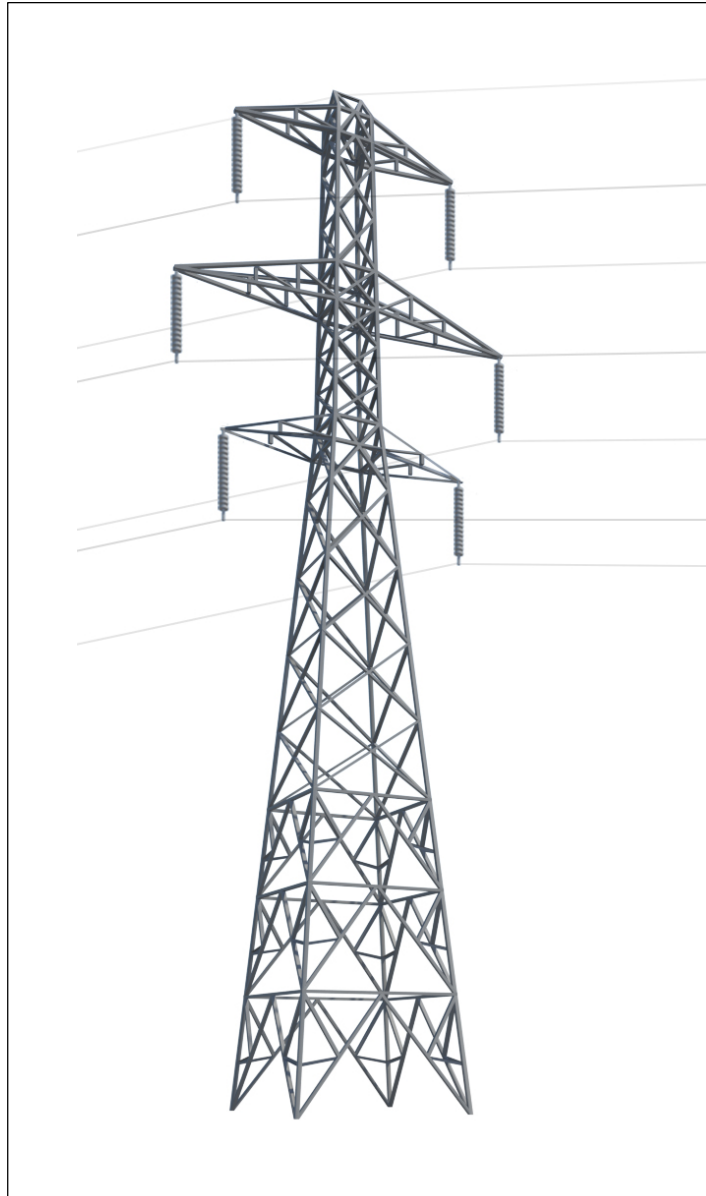
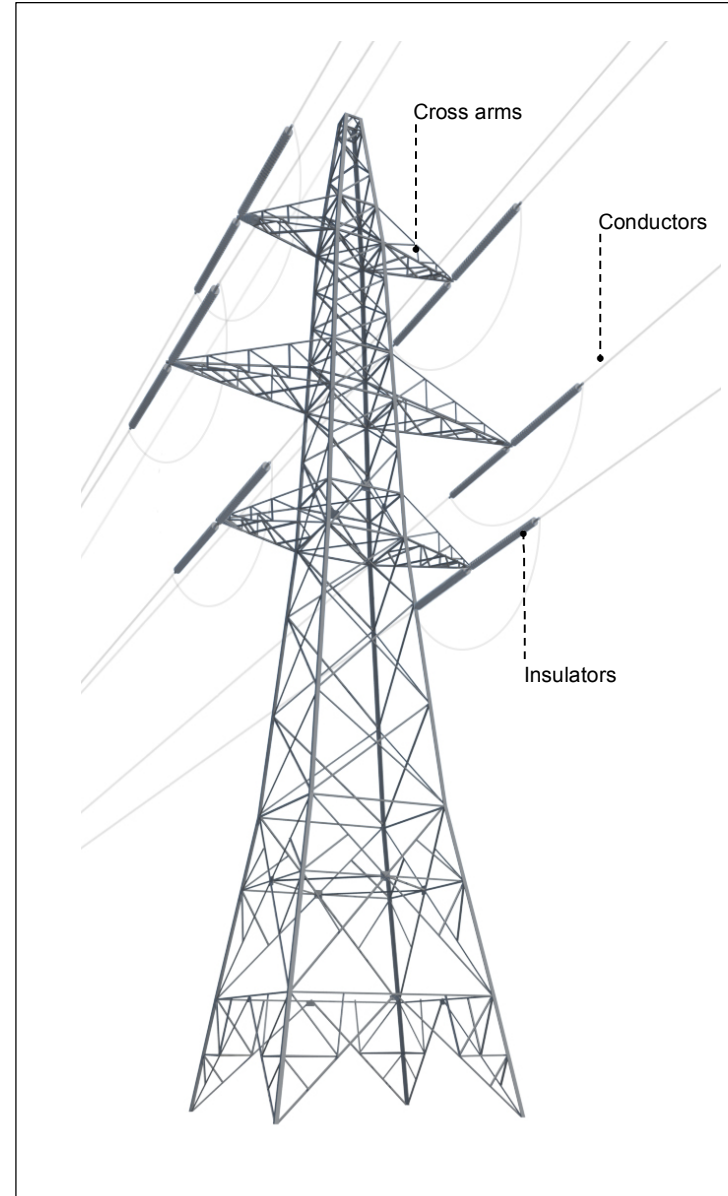




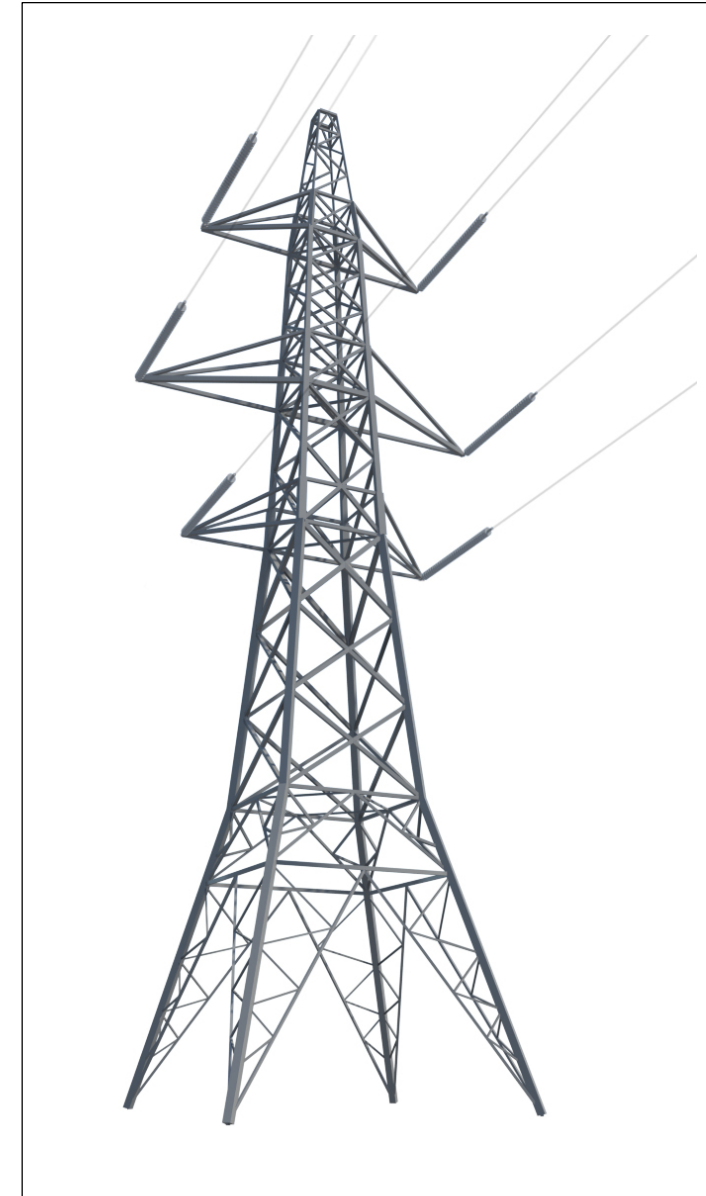
Figure 1.2: Typical L7 Steel Lattice Tower



Component parts of 132kV steel lattice tower L7: Suspension tower









Component parts of 132kV steel lattice tower L7: Angle tower

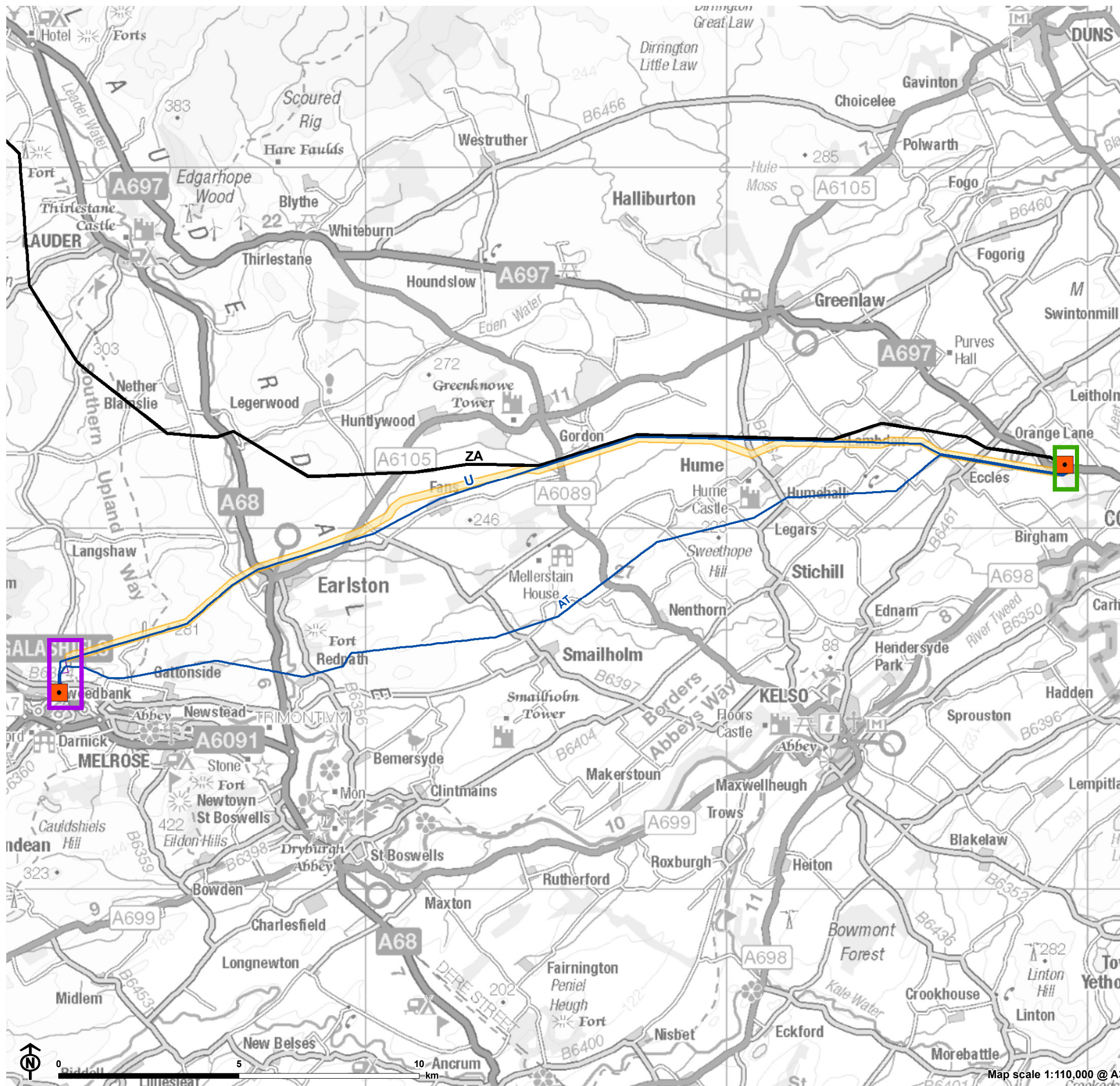


Component parts of 132kV steel lattice tower L7: Terminal tower

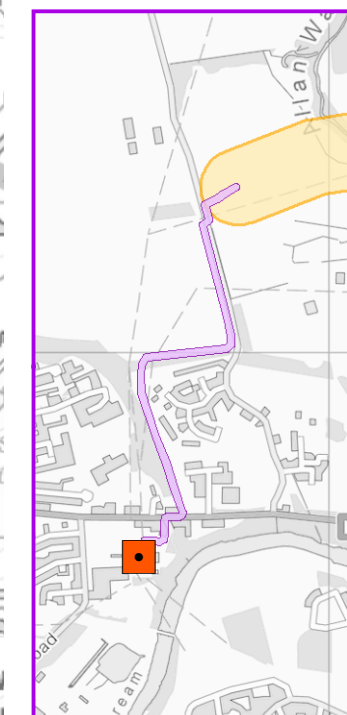


Figure 1.3: Proposed Development

-  Proposed new OHL route
-  Proposed new UGC route (Galashiels)
-  Proposed new UGC route (Eccles)
-  Substation
-  132kV overhead line
-  400kV overhead line



UGC route at Galashiels SS



UGC route at Eccles SS

