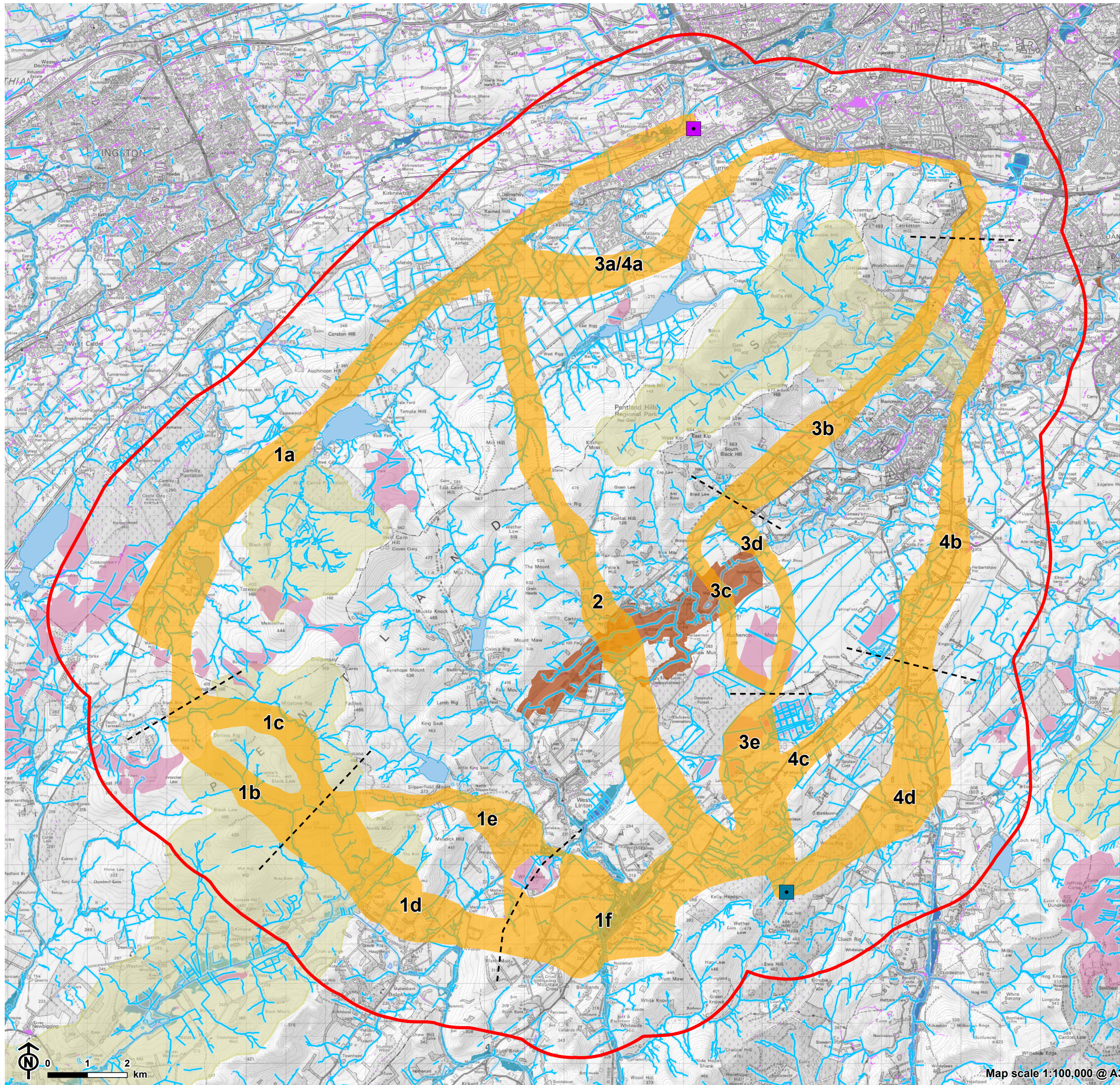


Figure 5.5: Peat, Geology, Hydrology and Hydrogeology Constraints



- Study area
- Currie substation (point of connection)
- Proposed Cloich Forest Wind Farm substation
- Route options
- Section
- NatureScot Carbon Peatland - Class 1
- Geological Conservation Review (GCR) Site
- Watercourse and surface water
- Watercourse and surface water 50m buffer
- Drinking Water Protection Area (DWPA)
- Flood Risk Management - Rivers Medium (200 year)
- Flood Risk Management - Surface Medium (200 year)