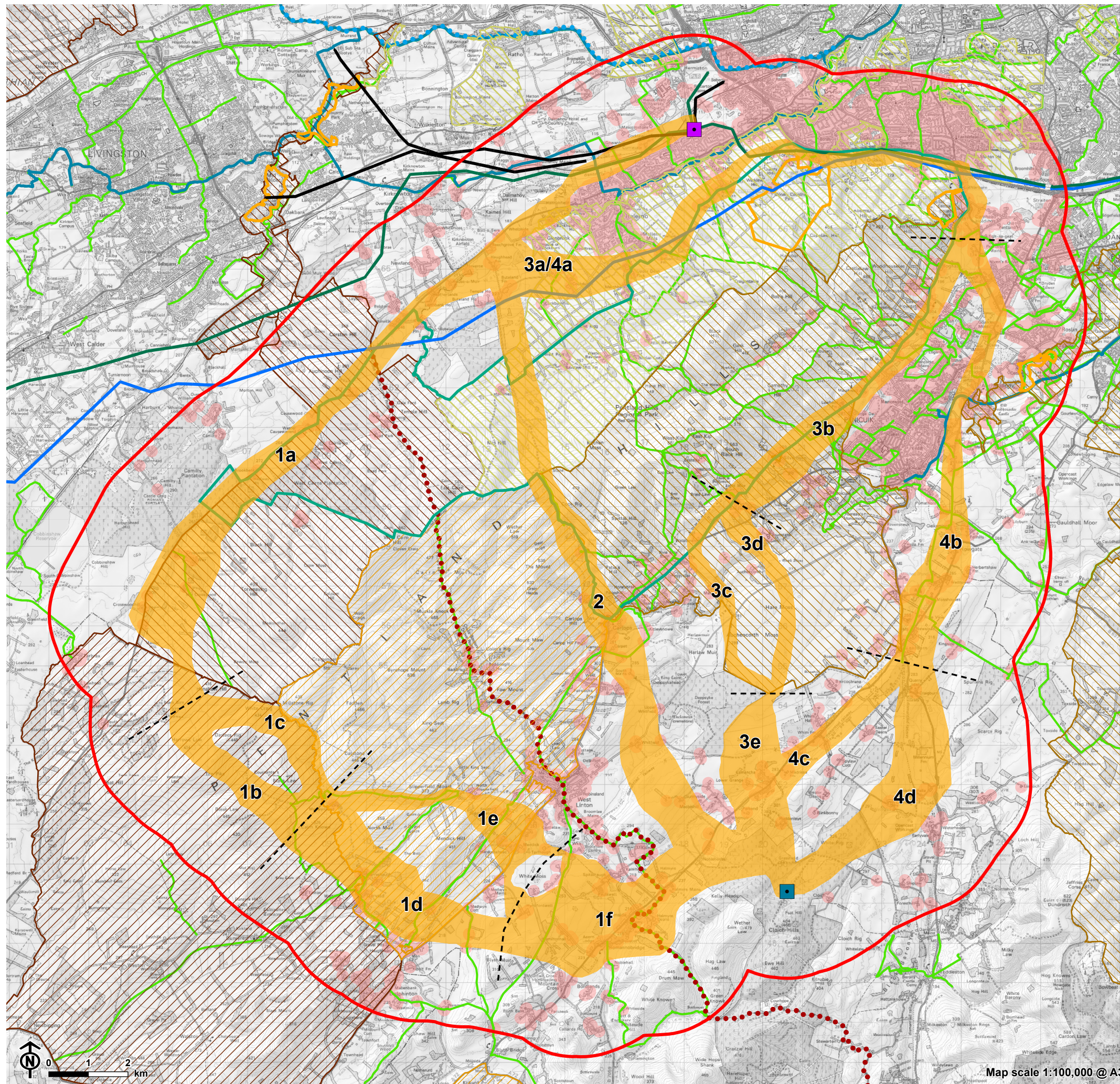


Figure 5.1a: Landscape Constraints



- Study area
- Currie substation (point of connection)
- Proposed Cloich Forest Wind Farm substation
- Existing 400kV overhead line (OHL)
- Existing 275kV overhead line (OHL)
- Existing 132kV overhead line (OHL)
- Route options
- Section
- Pentland Hills Regional Park
- Country Park
- Special Landscape Areas (Scottish Borders)
- Special Landscape Areas (South Lanarkshire)
- Special Landscape Areas (Midlothian)
- Special Landscape Areas (SLA) (City of Edinburgh)
- Special Landscape Areas (SLA) (West Lothian)
- 150m from residential address
- Cross Borders Drove Road
- Forth Clyde Canal/Union Canal Towpath
- National Cycle Network (NCN)
- Core path