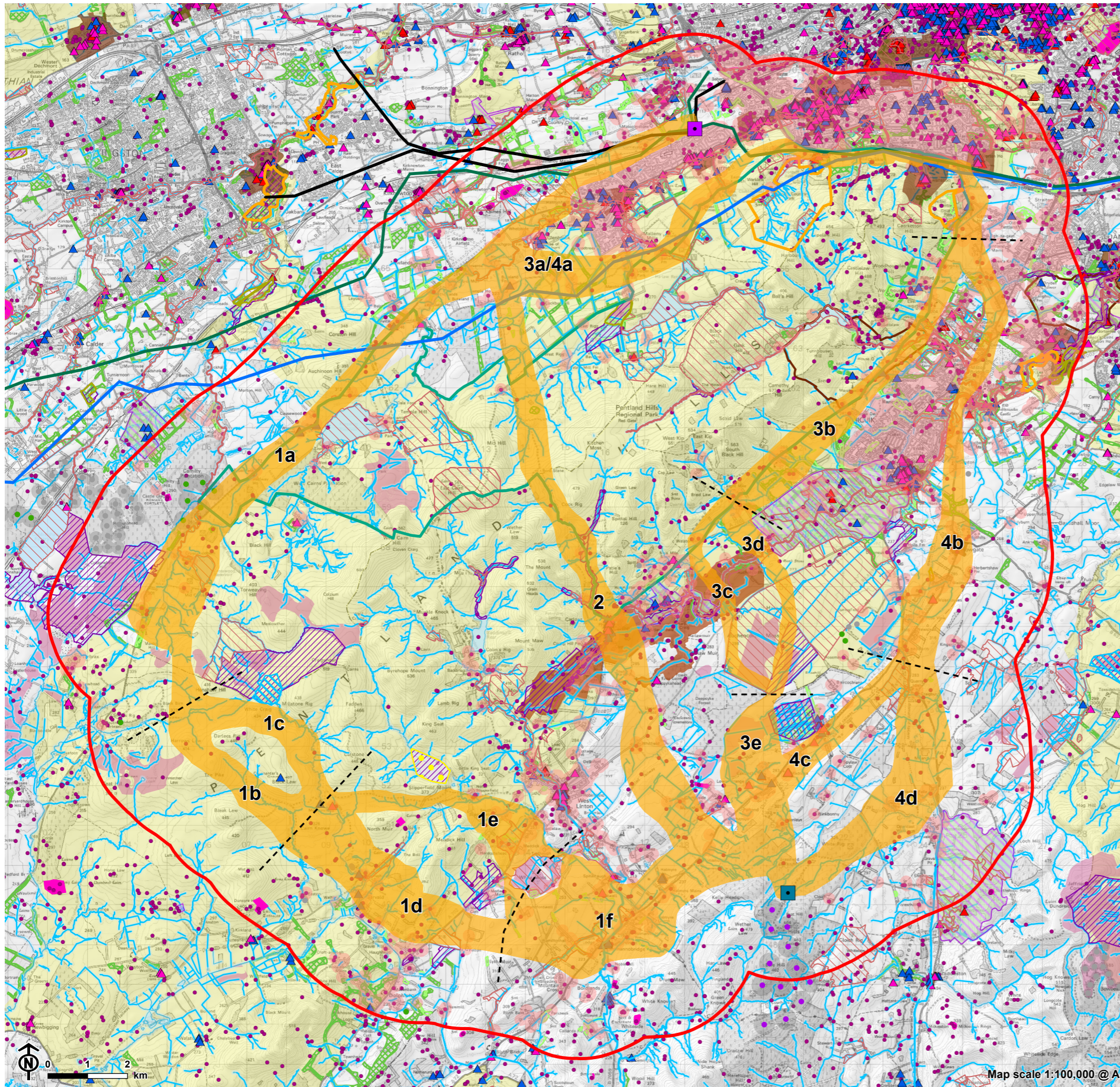


Figure 4.3a: Route Option constraints and considerations



- Study area
- Currie substation (point of connection)
- Proposed Cloich Forest Wind Farm substation
- Route options
- - - Section
- Holford Rule 1 Considerations**
- Ramsar
- Site of Special Scientific Interest (SSSI)
- Special Protection Area (SPA)
- Special Area of Conservation (SAC)
- Scheduled Monument
- Conservation Area (CA)
- ▲ Listed Building - Category A
- ▲ Listed Building - Category B
- ▲ Listed Building - Category C
- Garden and Designed Landscape (GDL)
- Historic Battlefield
- Ancient Woodland Inventory (AWI)
- NatureScot Carbon Peatland - Class 1
- Holford Rule 2 Considerations**
- Pentland Hills Regional Park
- Country Park
- Special Landscape Areas
- Scottish Wildlife Trust Reserve
- Local Nature Conservation Sites (LNCS)
- Non-designated heritage assets (Canmore)
- Native Woodland Survey of Scotland (NWSS)
- Geological Conservation Review (GCR) Site
- Additional Constraints**
- Existing 400kV overhead line (OHL)
- Existing 275kV overhead line (OHL)
- Existing 132kV overhead line (OHL)
- Wind turbine - operational
- Wind turbine - consented
- Wind turbine - application submitted
- Wind turbine - rotor diameter x 2
- 150m from residential address
- Watercourse and surface water
- Watercourse and surface water 50m buffer