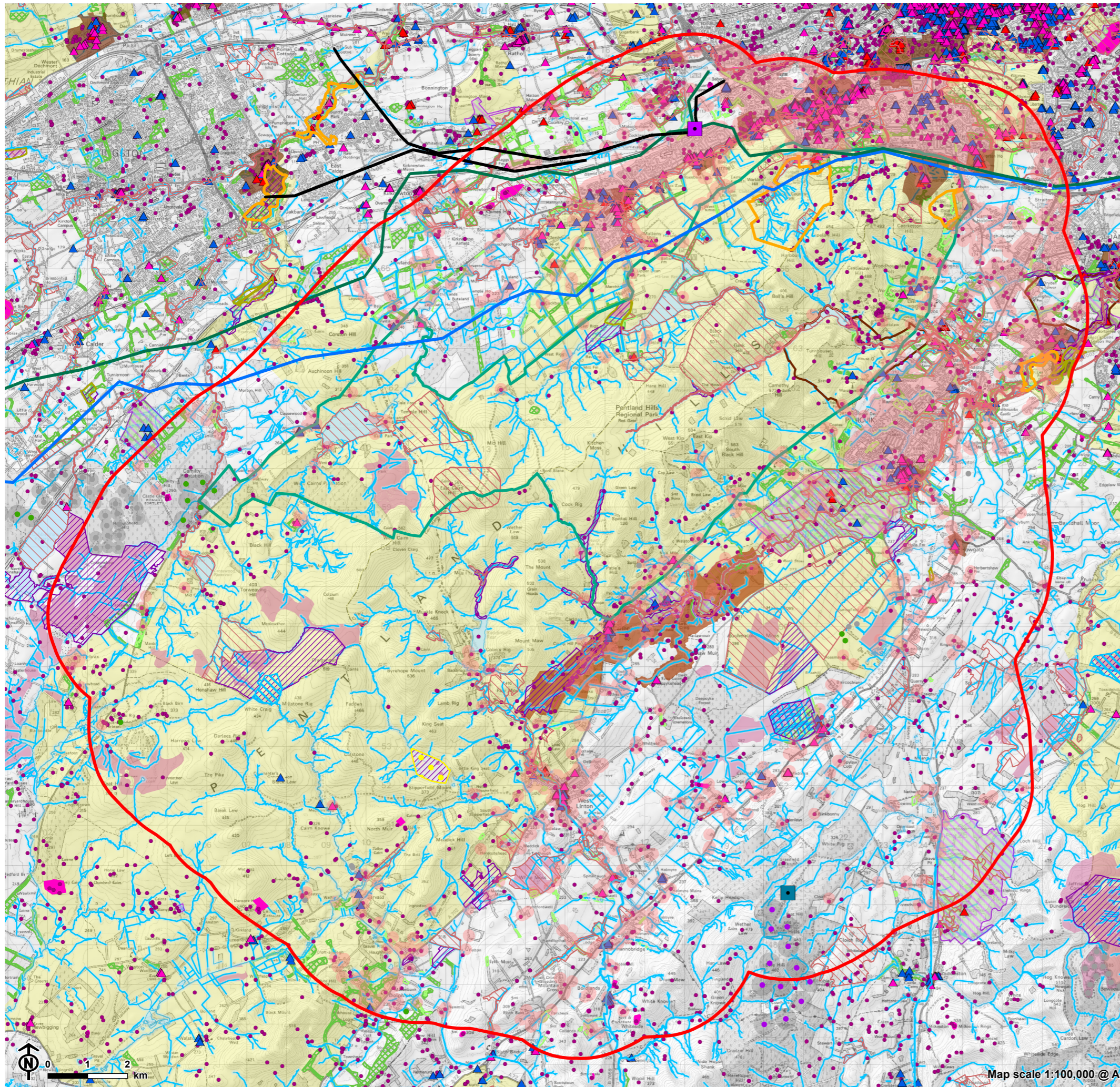
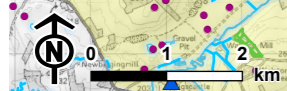


Figure 4.2: Study Area constraints and considerations



- Study area
 - Currie substation (point of connection)
 - Proposed Cloich Forest Wind Farm substation
- Holford Rule 1 Considerations**
- Ramsar
 - Site of Special Scientific Interest (SSSI)
 - Special Protection Area (SPA)
 - Special Area of Conservation (SAC)
 - Scheduled Monument
 - Conservation Area (CA)
 - Listed Building - Category A
 - Listed Building - Category B
 - Listed Building - Category C
 - Garden and Designed Landscape (GDL)
 - Historic Battlefield
 - Ancient Woodland Inventory (AWI)
 - NatureScot Carbon Peatland - Class 1
- Holford Rule 2 Considerations**
- Pentland Hills Regional Park
 - Country Park
 - Special Landscape Areas
 - Scottish Wildlife Trust Reserve
 - Local Nature Conservation Sites (LNCS)
 - Non-designated heritage assets (Canmore)
 - Native Woodland Survey of Scotland (NWSS)
 - Geological Conservation Review (GCR) Site
- Additional Constraints**
- Existing 400kV overhead line (OHL)
 - Existing 275kV overhead line (OHL)
 - Existing 132kV overhead line (OHL)
 - Wind turbine - operational
 - Wind turbine - consented
 - Wind turbine - application submitted
 - Wind turbine - rotor diameter x 2
 - 150m from residential address
 - Watercourse and surface water
 - Watercourse and surface water 50m buffer



Map scale 1:100,000 @ A3