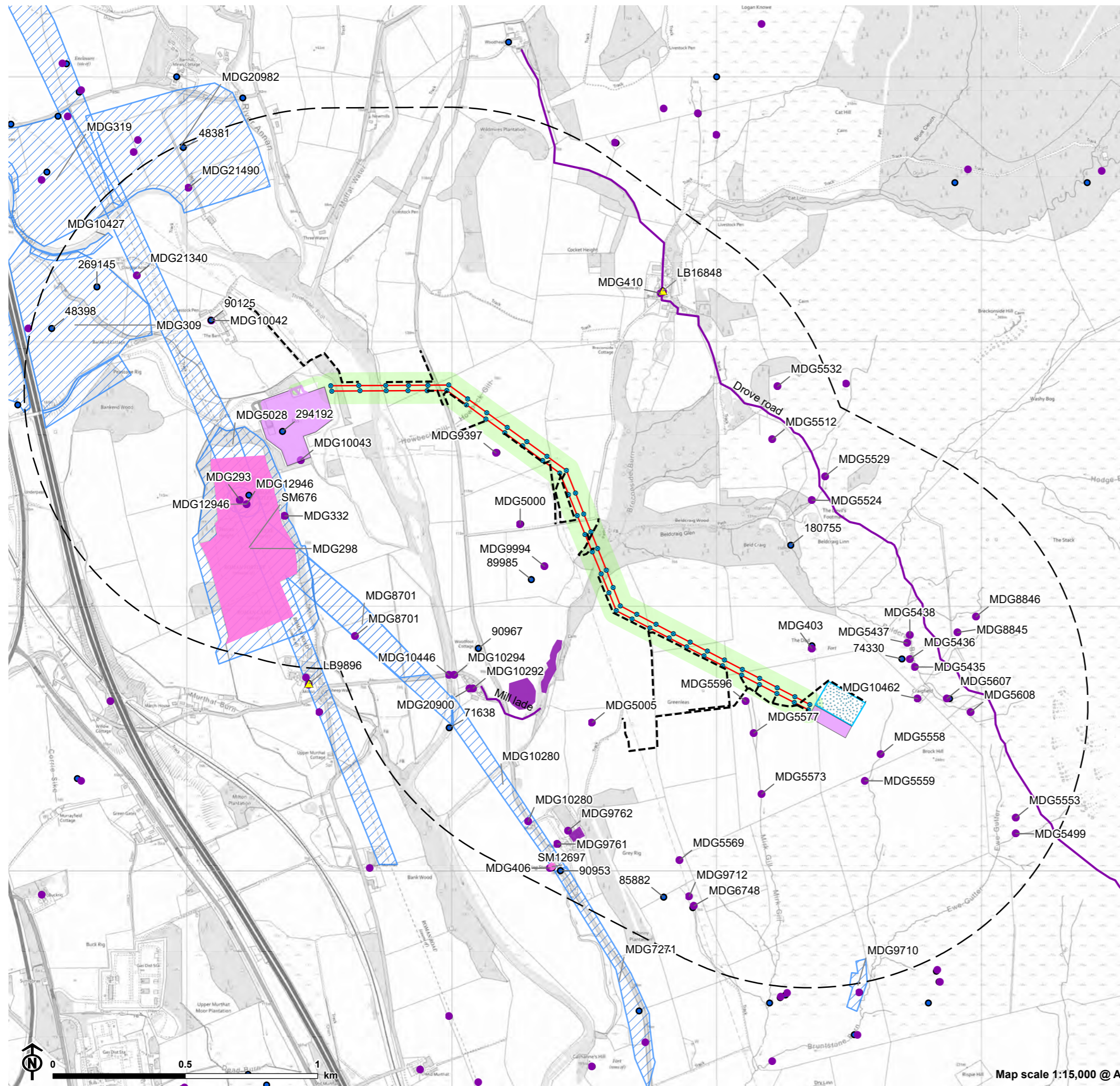


Figure 7.1: Baseline Historic Environment

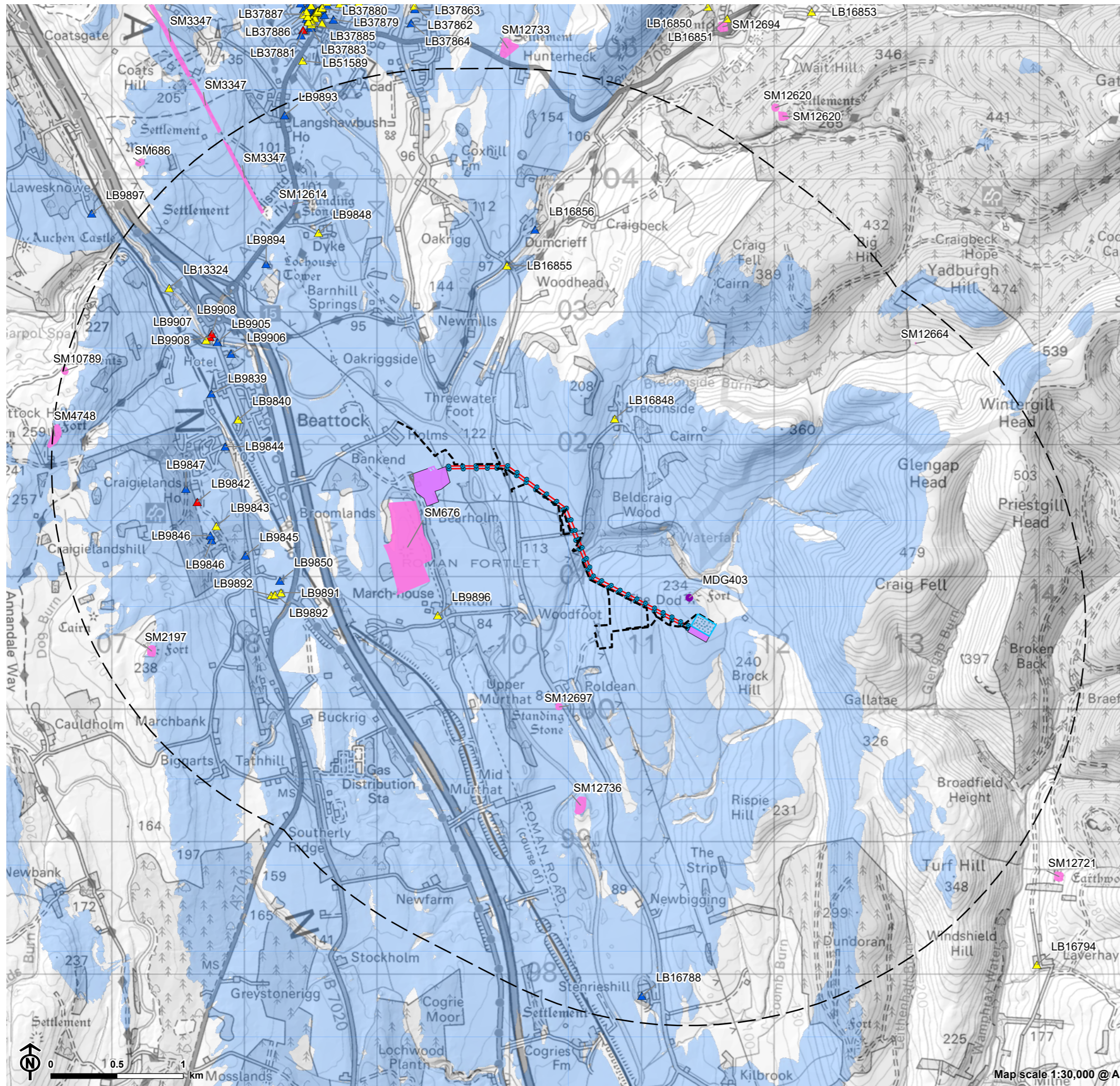


- 1km Inner Study Area
- Wood H Pole
- Proposed 132 kV overhead line (OHL)
- Substation Compound
- Moffat Substation Extension - not part of Scoop Hill 132kV Connection Project
- Additional Moffat Substation Extension - not part of Scoop Hill 132kV Connection Project
- Scoop Hill Wind Farm Energy Storage Facility
- 120m Wayleave (OHL)
- Proposed Access Route
- Designated Heritage Assets**
- Scheduled Monument (SM)
- Category C Listed Building
- Non-Designated Heritage Assets**
- Historic Environment Record
- Areas of Archaeological Interest
- Canmore



Map scale 1:15,000 @ A3

Figure 7.2: Setting Study Area



- 3km Outer Study Area
- Wood H Pole
- Wood Pole Theoretically Visible
- Proposed 132 kV overhead line (OHL)
- Substation Compound
- Moffat Substation Extension - not part of Scoop Hill 132kV Connection Project
- Additional Moffat Substation Extension - not part of Scoop Hill 132kV Connection Project
- Scoop Hill Wind Farm Energy Storage Facility
- Proposed Access Route
- Designated Heritage Assets**
- Scheduled Monument (SM)
- Listed building**
- ▲ Category A
- ▲ Category B
- ▲ Category C Listed Building
- Non-Designated Heritage Assets**
- Historic Environment Record**
- The Dod



Map scale 1:30,000 @ A3