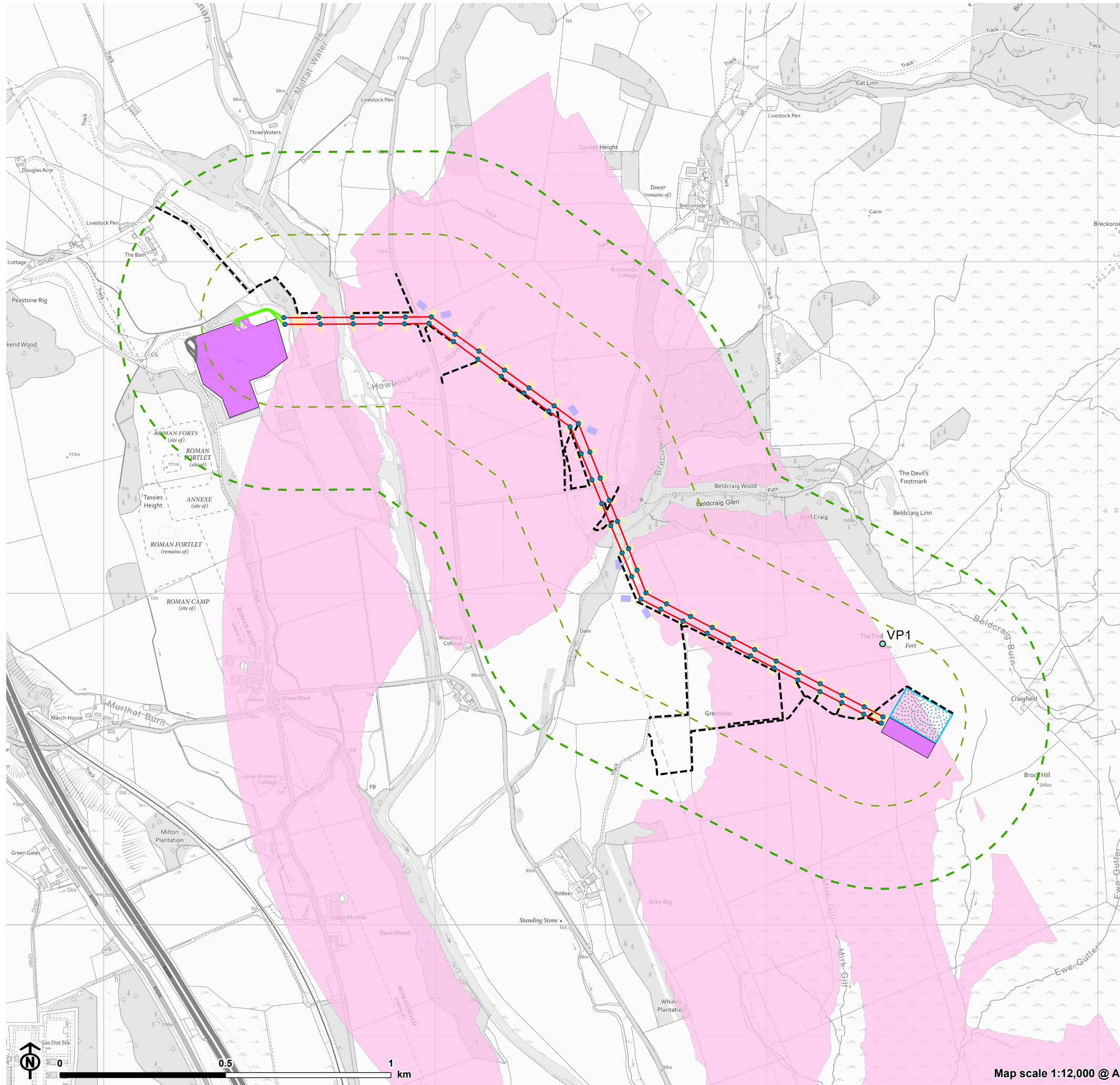


Figure 6.1: Ornithology Survey Areas



- Wood H Pole
- 132kV Underground Cable (UGC)
- 132kV Overhead Line Route (OHL)
- Substation Compound
- Mofat Substation Extension - not part of Scoop Hill 132kV Connection Project
- Additional Mofat Substation Extension - not part of Scoop Hill 132kV Connection Project
- Scoop Hill Wind Farm Energy Storage Facility
- Pulling Area
- Working Area
- Proposed Access Route
- Ornithology Survey Areas**
- Breeding Bird 250m Survey Area
- Bird Flight Activity 500m Survey Area
- Vantage Point 1
- Viewshed

The viewshed is calculated from a vantage point height of 1.5m to a minimum of ground level + 10 m.

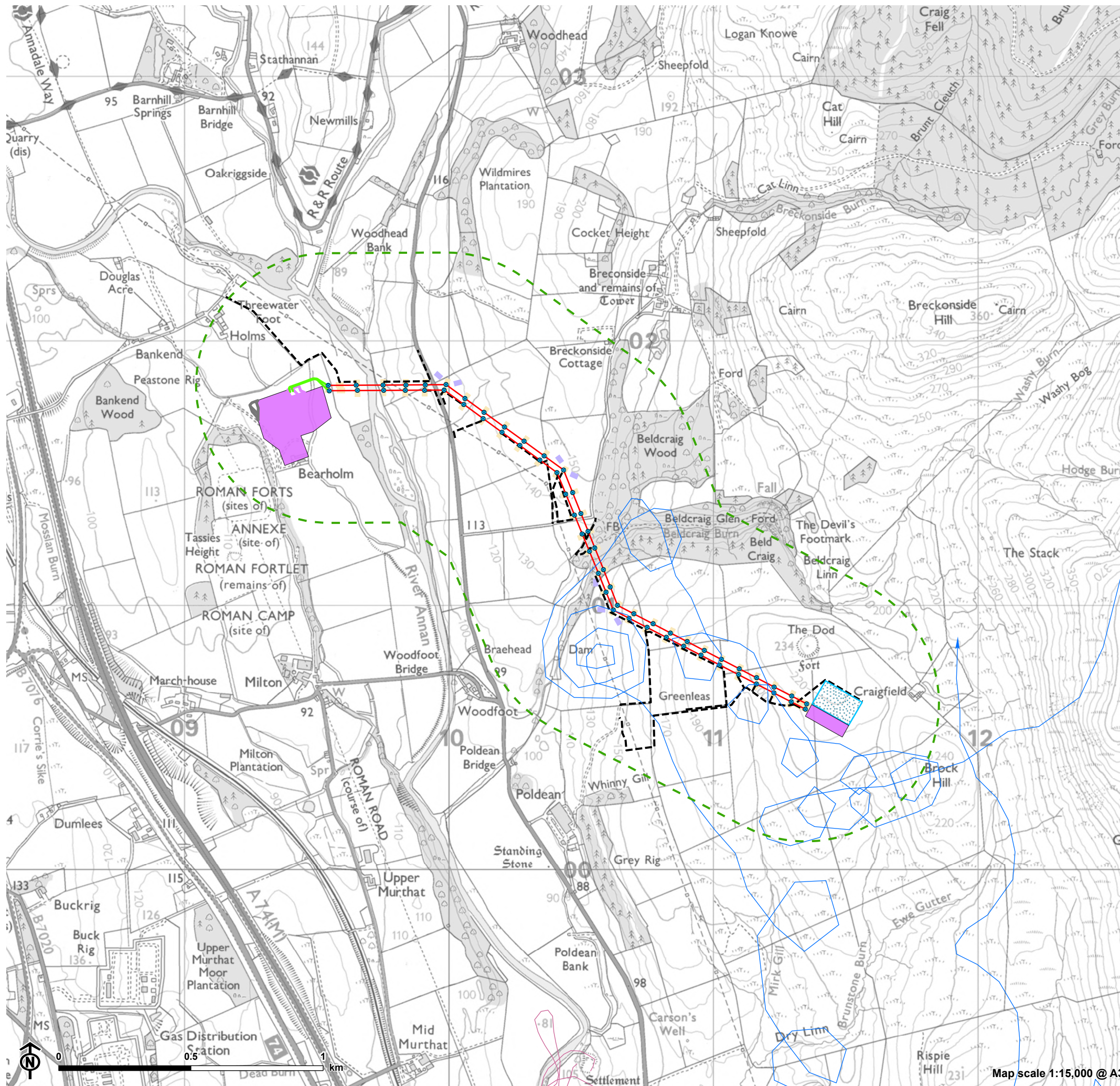
The terrain model assumes bare ground and is derived from LiDAR DTM height data Phase 3 (obtained from Scottish Remote Sensing Portal).

Earth curvature and atmospheric refraction have been taken into account. The ZTV was calculated using ArcMap 10.8.1 software.



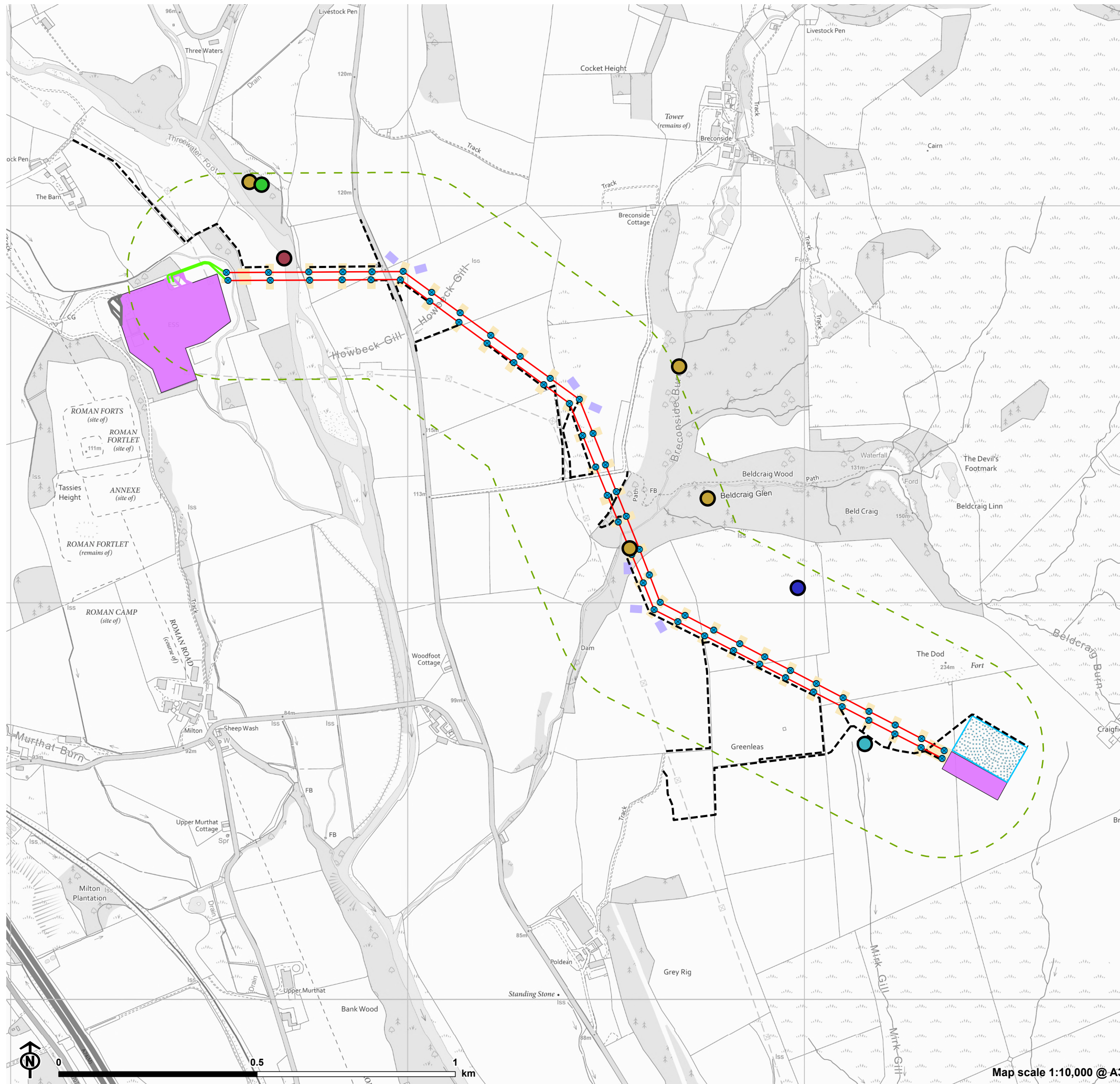
Map scale 1:12,000 @ A3

Figure 6.2: Bird Flight Activity – 2021 Breeding Season

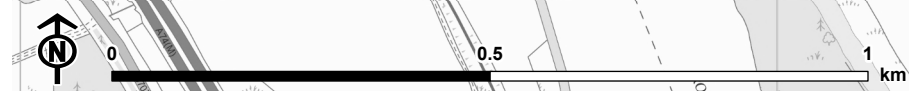


- Wood H Pole
- 132kV Underground Cable (UGC)
- 132kV Overhead Line Route (OHL)
- Substation Compound
- Moffat Substation Extension - not part of Scoop Hill 132kV Connection Project
- Additional Moffat Substation Extension - not part of Scoop Hill 132kV Connection Project
- Scoop Hill Wind Farm Energy Storage Facility
- Pulling Area
- Working Area
- Proposed Access Route
- Osprey
- Red Kite
- Bird Flight Activity 500m Survey Area

Figure 6.3: Breeding Birds – 2022



- Wood H Pole
- 132kV Underground Cable (UGC)
- 132kV Overhead Line Route (OHL)
- Substation Compound
- ▨ Moffat Substation Extension - not part of Scoop Hill 132kV Connection Project
- ▨ Additional Moffat Substation Extension - not part of Scoop Hill 132kV Connection Project
- ▨ Scoop Hill Wind Farm Energy Storage Facility
- Pulling Area
- Working Area
- Proposed Access Route
- Common sandpiper
- Cuckoo
- Linnet
- Skylark
- Song Thrush
- Breeding Bird 250m Survey Area



Map scale 1:10,000 @ A3