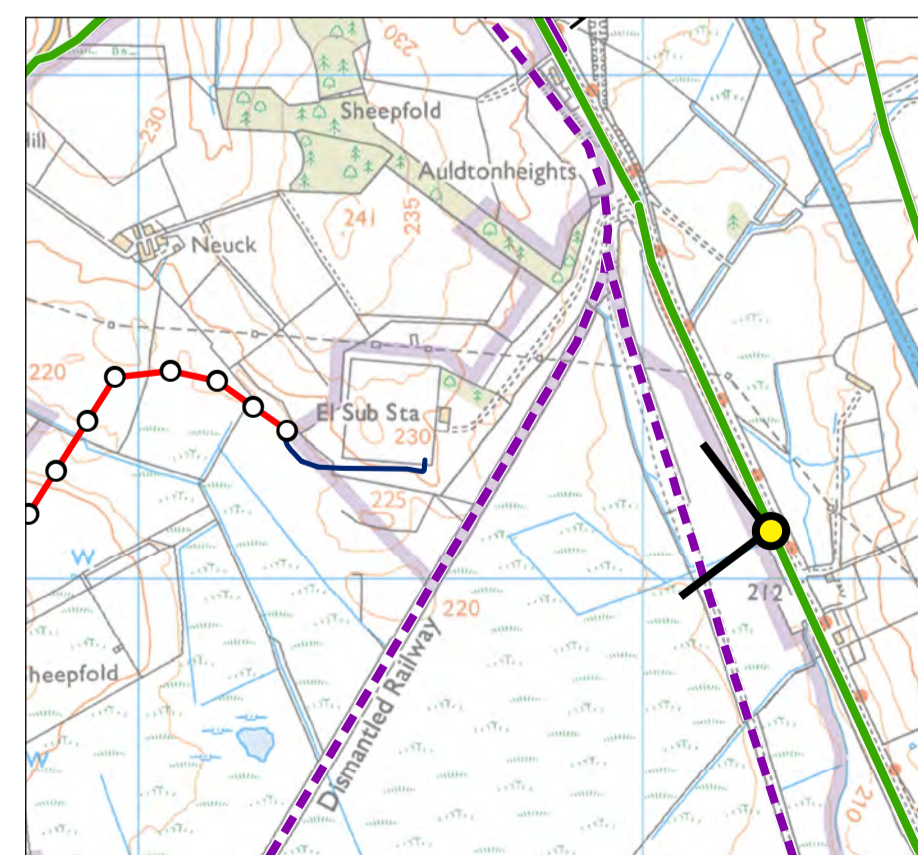
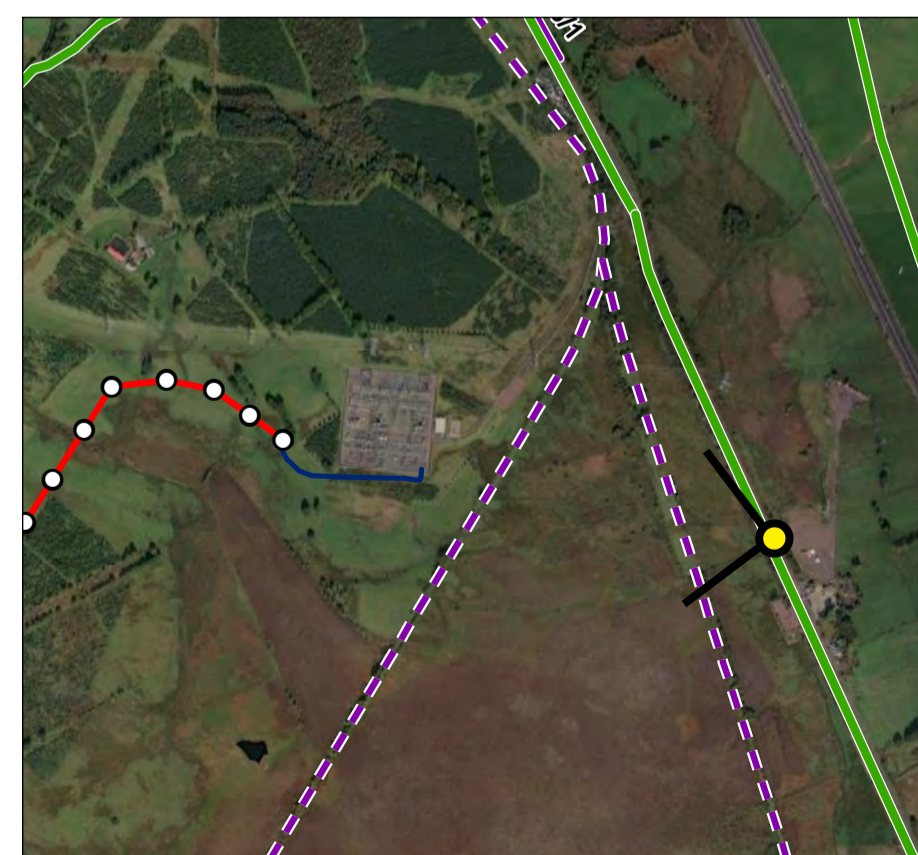


Kennoxhead Windfarm to Coalburn Substation 132kV Overhead Line - Viewpoint No. 20



View looking west from the B7078 Carlisle Road (also NCN No. 74 and CL/5965/2).

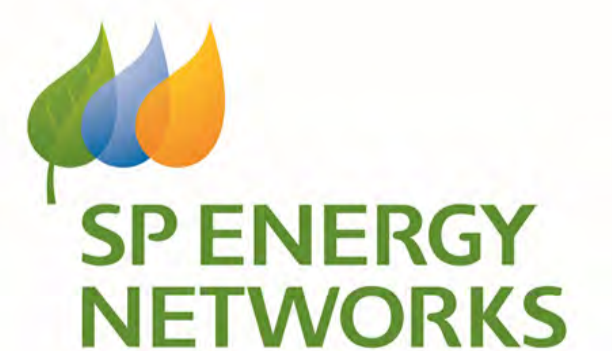


This viewpoint is located adjacent to the B7078 to the east of Coalburn Substation. The view is occupied by a flat landscape currently regenerating from previous mineral workings in the area with scrubland vegetation covering the landscape. The landscape within the view is crossed by the dismantled railway lines associated with the former works, which are now footpaths. In the middle distance the large slag heap of mining waste to the south of Glaikhead is visible. Coalburn Substation is visible approximately 730 m west-north-west of the viewpoint location. Stacked steel pylons are visible cresting the small area of higher ground beyond the substation.

From this location approximately 1.3 km of the overhead line would be visible in the middle distance, stretching from the slag heap in the south to the substation in the north. The wood pole structures would be partially filtered by intervening landform and vegetation, and towards the south would be backclothed by landform in the far distance.

Construction works would not be visible from this distance.

Whilst a reasonably long stretch of the Proposed Development would be visible from this viewpoint location, it would be from such a distance that it would not be noticeable to the casual observer and would not alter the perception of the existing view.



Viewpoint 20: B7078 Carlisle Road (NCN No. 74 and CL/5965/2)
Receptors: Cyclists and motorists

Project: Kennoxhead Connection
 Figure number: 32482/6.3/20
 Revision: 1
 Date of issue: September 2022

Location: E283268 / N637113
 Altitude (AOD): 216m
 Camera height above ground level: 1.6m
 Distance and direction from nearest pole:
 ~1km east of OHL pole no. 169

Date taken: 11 March 2021
 Conditions: Clear
 Camera: Canon 6D (Full frame sensor)
 Lens: Canon EF 50 mm f/1.8 II
 Equipment: Manfrotto pano head and leveller

Horizontal field of view: 90°
 Paper size: A1 (841mm x 594mm)
 Image size: 820mm x 250mm
 Projection: Cylindrical Panorama
 Enlargement factor: 96% at A1

