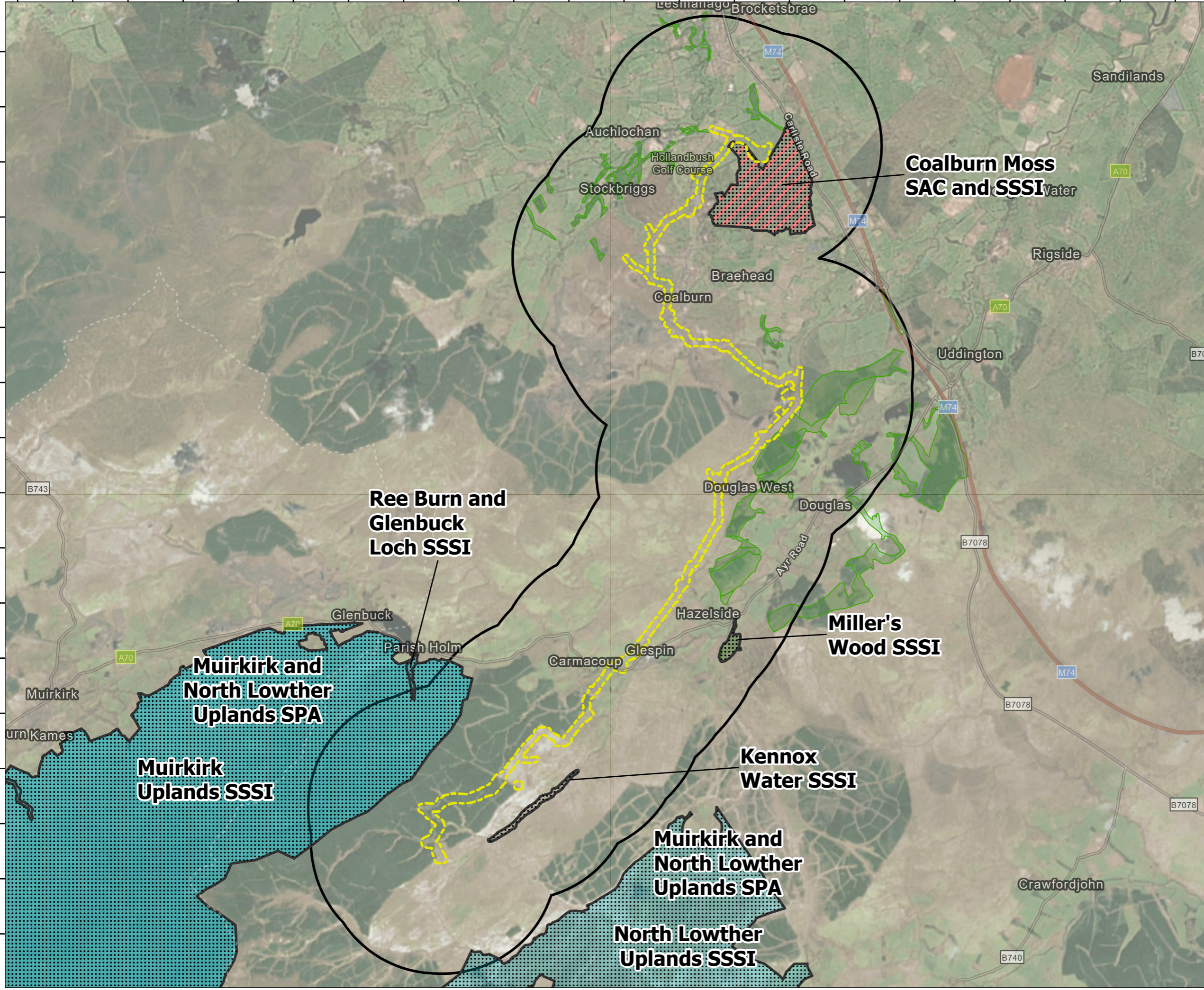


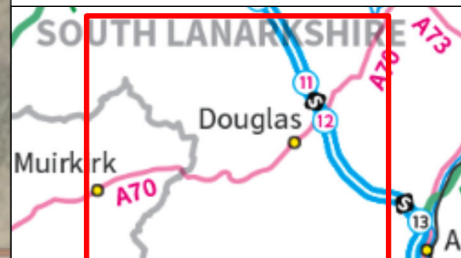
269000 270000 271000 272000 273000 274000 275000 276000 277000 278000 279000 280000 281000 282000 283000 284000 285000 286000 287000 288000 289000 290000

639000
638000
637000
636000
635000
634000
633000
632000
631000
630000
629000
628000
627000
626000
625000
624000
623000



Legend:

- 50m Working Area Buffer
- 2km Buffer
- Designated Sites**
- Special Areas of Conservation (SAC)
- Special Protection Area (SPA)
- Sites of Special Scientific Interest (SSSI)
- Ancient Woodland Inventory (AWI)

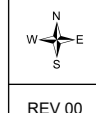
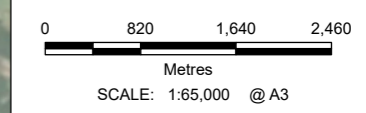


00	14/09/2022	2480372	SP	SW	RM
Rev	Date	Description	Drn	Chk	App

Kennoxhead



TITLE: Figure 8.1:
Statutory Designated Sites



Contains Ordnance Survey data © Crown copyright and database right 2022
World Imagery (Clarity): Source: Esri, DigitalGlobe, GeoEye, Earthstar Geographics, CNES/Airbus DS, USDA, USGS, AeroGRID, IGN, and the GIS User Community
Hybrid Reference Layer: Esri UK, Esri, HERE, Garmin, Foursquare, GeoTechnologies, Inc, METI/NASA, USGS
OS Open Rasters: Contains OS data © Crown Copyright and database right 2022