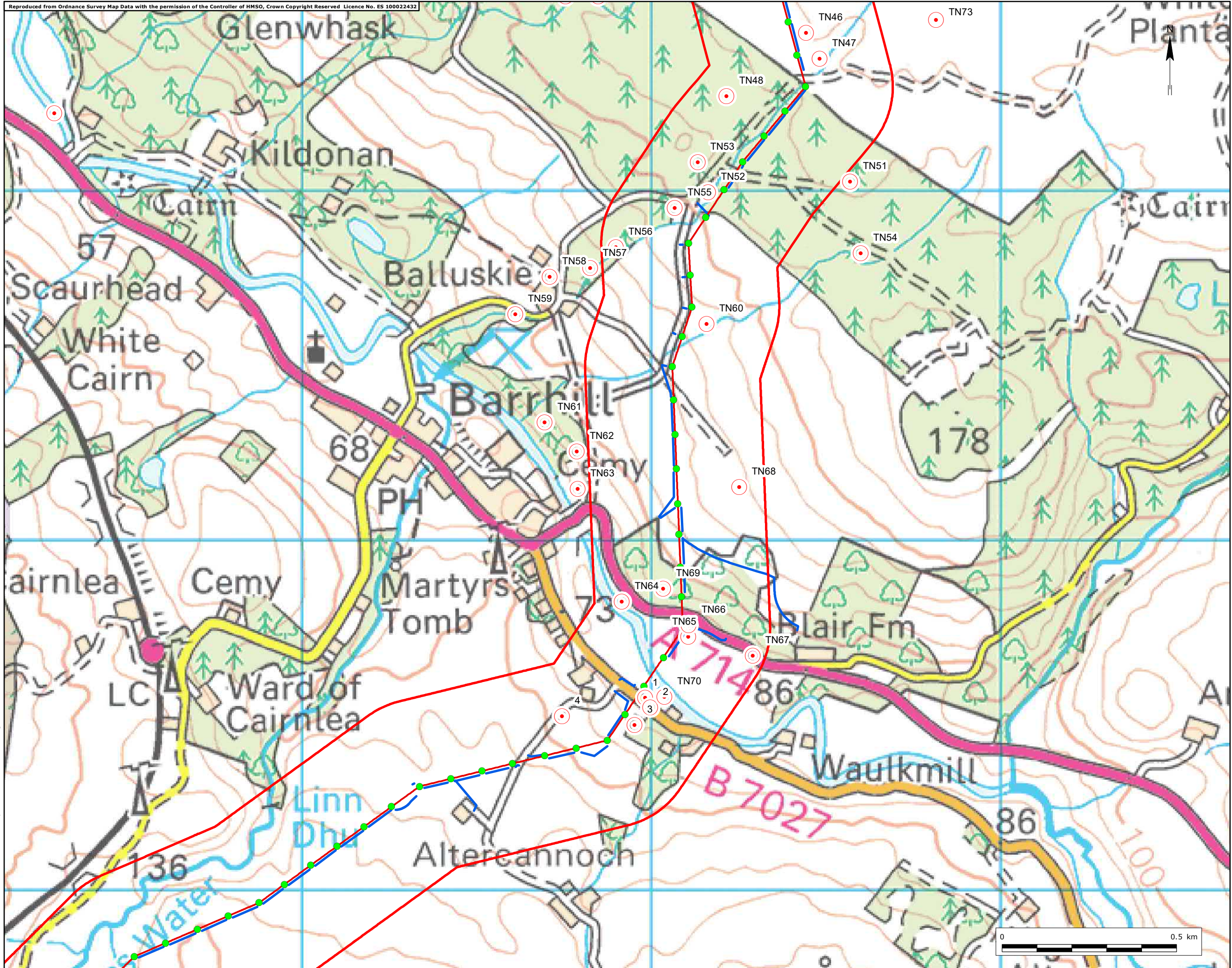


- Key
- Site Boundary
  - Mark Hill Substation
  - Proposed Pole Locations
  - Proposed Alignment
  - Underground Cable (Permitted Development)
  - Indicative Access
  - Target Notes
  - Bat Roost Potential Tree

|             |   |                                                   |    |
|-------------|---|---------------------------------------------------|----|
| Title       |   | Figure 7.6a                                       |    |
|             |   | Target Notes                                      |    |
| Project No. |   | UK12-22885                                        |    |
| Site        |   | Stranoch and Chirmorie Wind Farms Grid Connection |    |
| Client      |   | SP Energy Networks                                |    |
| Date        |   | September 2021                                    |    |
| Scale       |   | 1:10,000 @ A3                                     |    |
| Issue       | 2 | Drawn by                                          | NL |



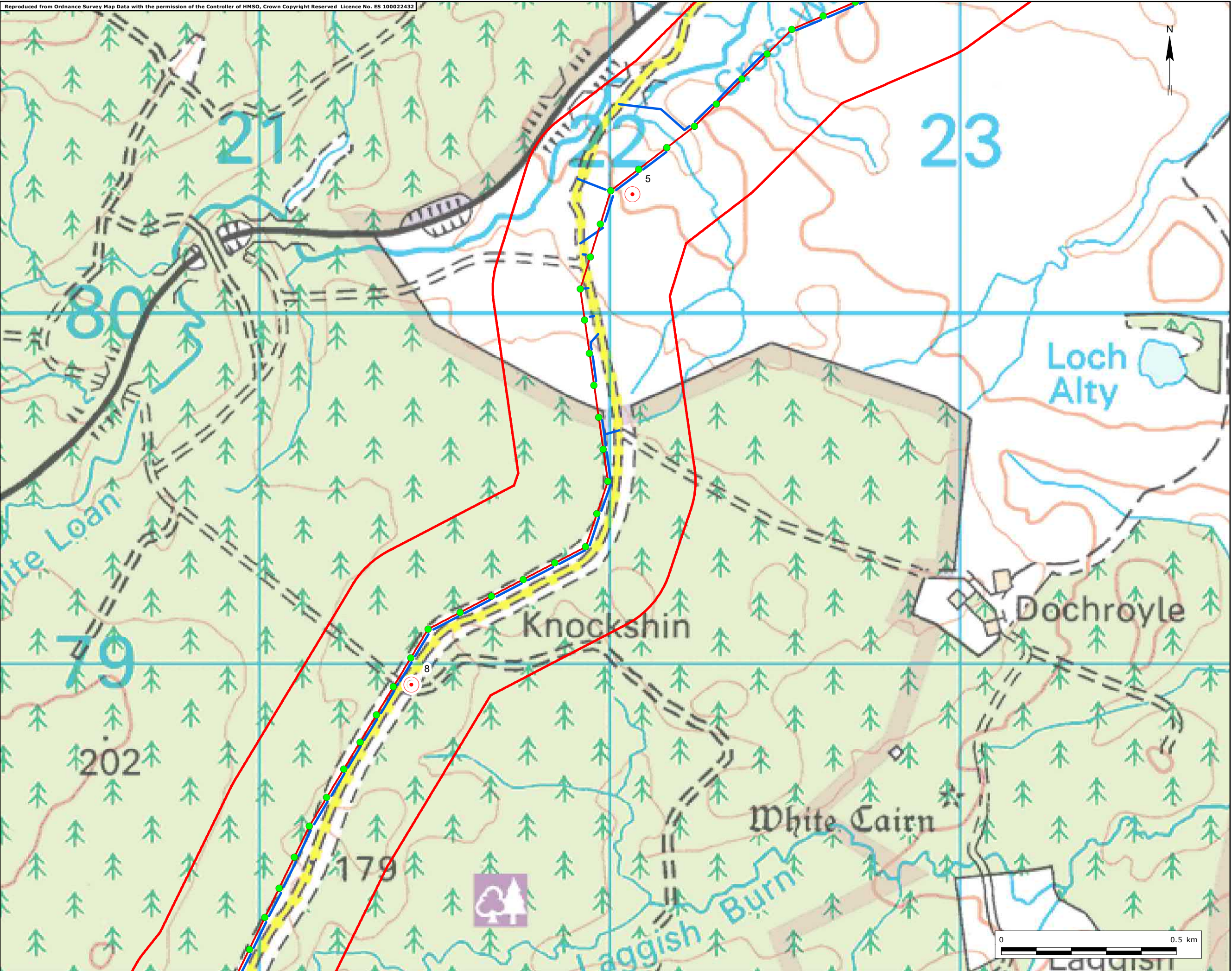


- Key
- Site Boundary
  - Proposed Pole Locations
  - Proposed Alignment
  - Indicative Access
  - Target Notes
  - Target Notes

|              |   |                                                   |    |
|--------------|---|---------------------------------------------------|----|
| Title        |   | Figure 7.6b                                       |    |
| Target Notes |   |                                                   |    |
| Project No.  |   | UK12-22885                                        |    |
| Site         |   | Stranoch and Chirmorie Wind Farms Grid Connection |    |
| Client       |   | SP Energy Networks                                |    |
| Date         |   | September 2021                                    |    |
| Scale        |   | 1:10,000 @ A3                                     |    |
| Issue        | 2 | Drawn by                                          | NL |

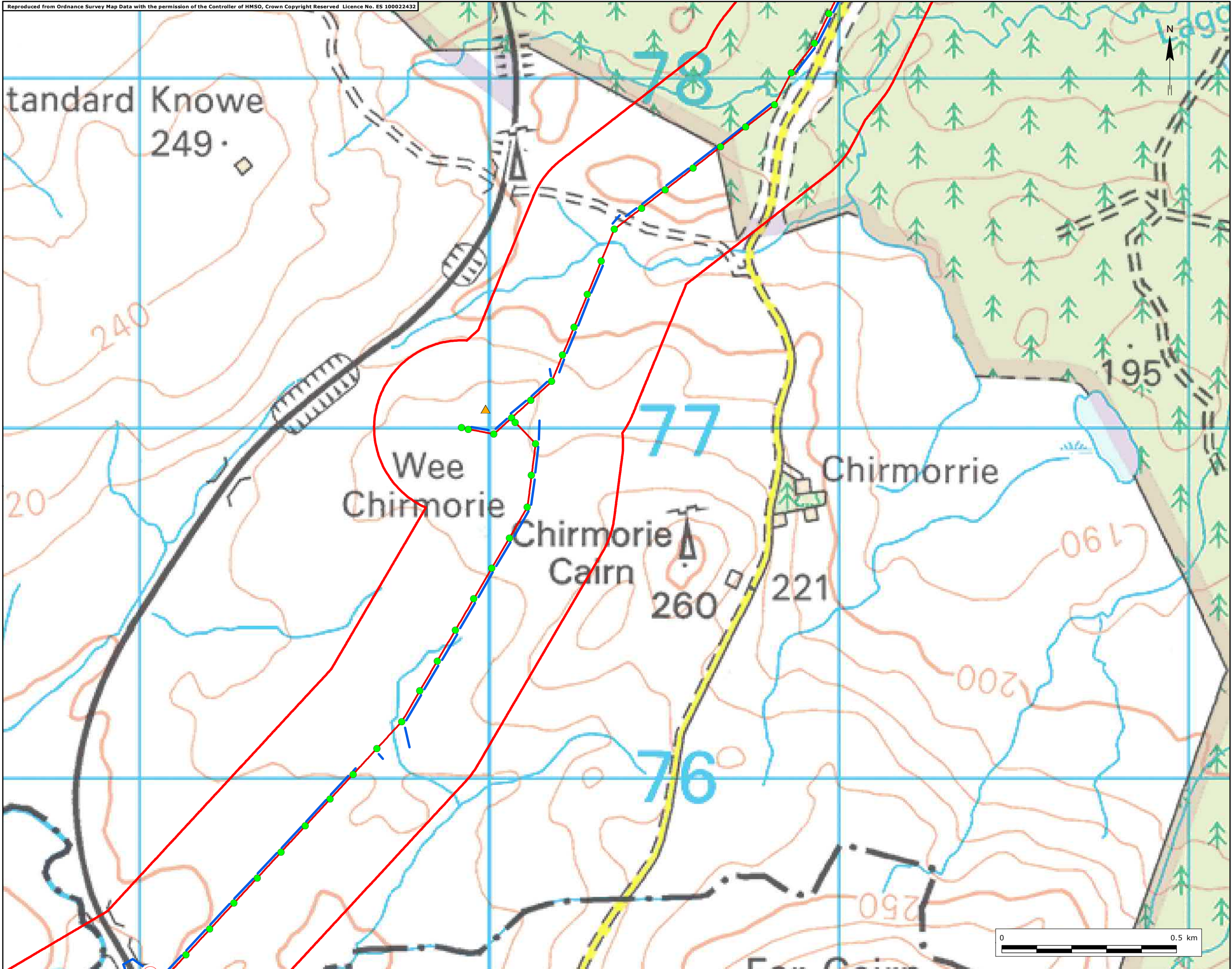
Path: C:\Users\mittle\OneDrive - Ramboll\Desktop\Stranoch\UK1222885\_TargetNotes\_B.mxd

- Key
- Site Boundary
  - Proposed Pole Locations
  - Proposed Alignment
  - Indicative Access
  - Target Notes



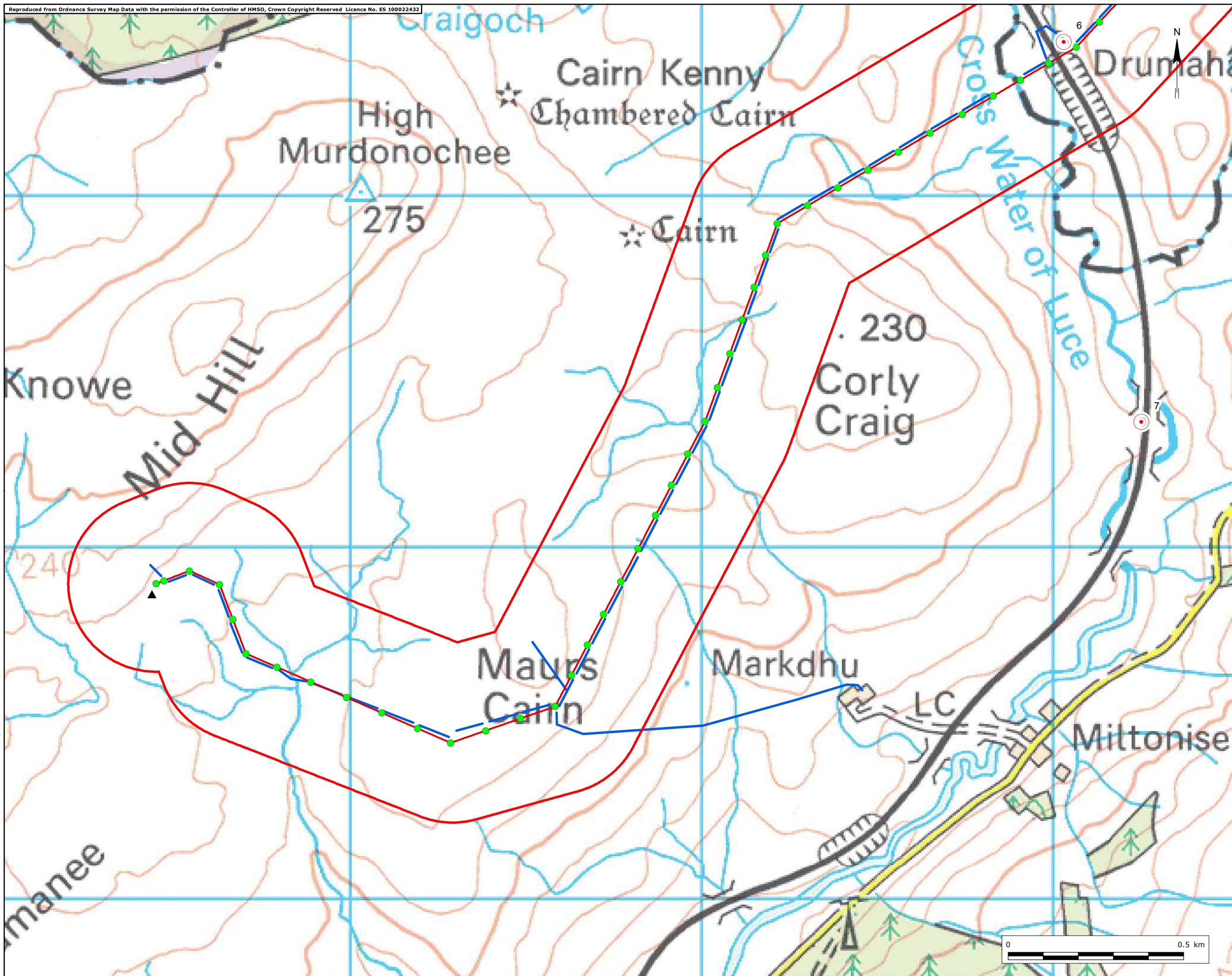
Path: C:\Users\mittle\OneDrive - Ramboll\Desktop\Stranoch\UK1222885\_TargetNotes\_B.mxd

|             |   |                                                   |    |
|-------------|---|---------------------------------------------------|----|
| Title       |   | Figure 7.6c                                       |    |
|             |   | Target Notes                                      |    |
| Project No. |   | UK12-22885                                        |    |
| Site        |   | Stranoch and Chirmorie Wind Farms Grid Connection |    |
| Client      |   | SP Energy Networks                                |    |
| Date        |   | September 2021                                    |    |
| Scale       |   | 1:10,000 @ A3                                     |    |
| Issue       | 2 | Drawn by                                          | NL |



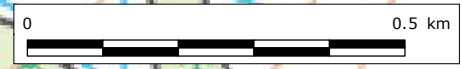
- Key
- Site Boundary
  - ▲ Consented Chirmorie Substation
  - Proposed Pole Locations
  - Proposed Alignment
  - Indicative Access
  - Target Notes

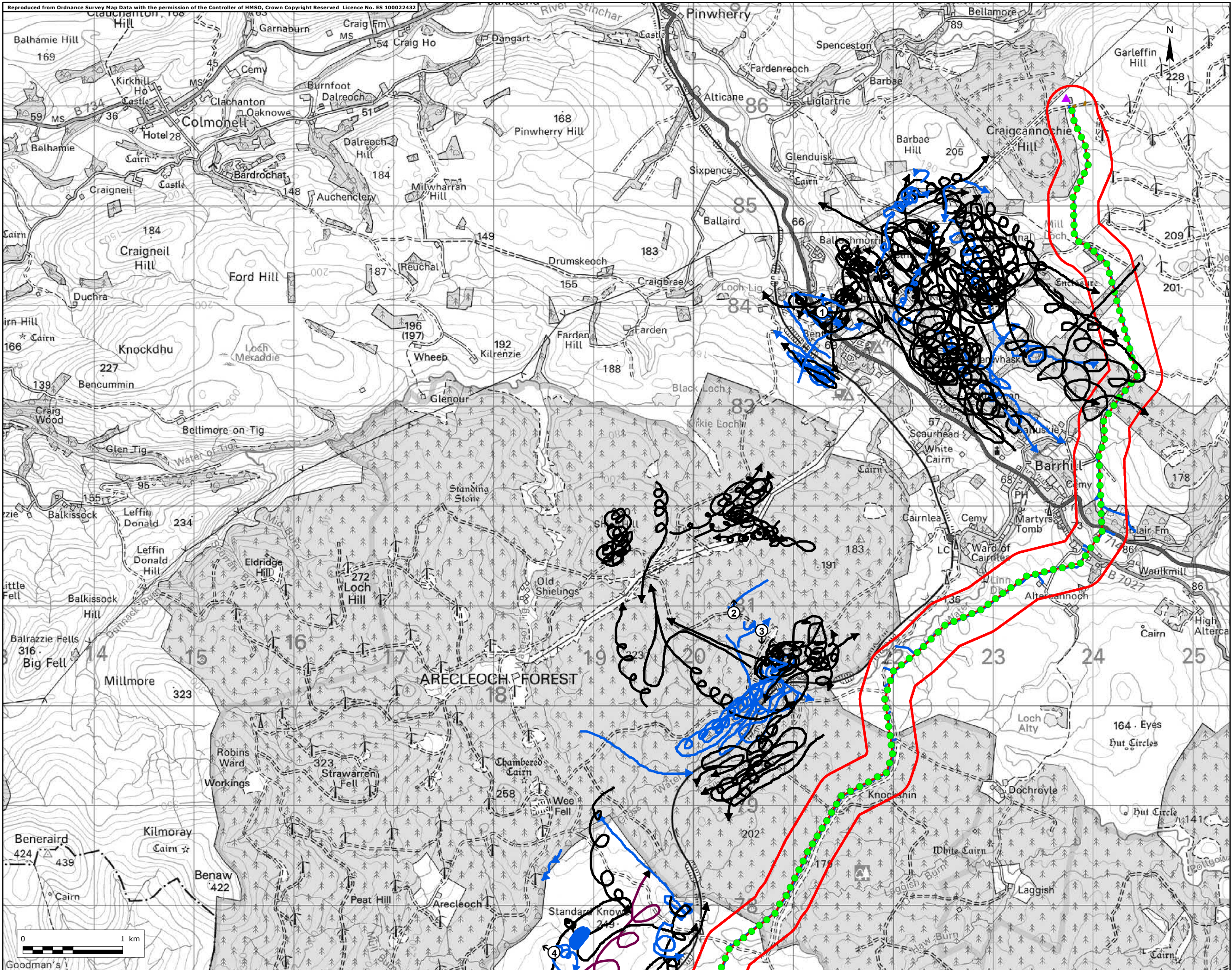
|              |   |                                                   |
|--------------|---|---------------------------------------------------|
| Title        |   | Figure 7.6d                                       |
| Target Notes |   |                                                   |
| Project No.  |   | UK12-22885                                        |
| Site         |   | Stranoch and Chirmorie Wind Farms Grid Connection |
| Client       |   | SP Energy Networks                                |
| Date         |   | September 2021                                    |
| Scale        |   | 1:10,000 @ A3                                     |
| Issue        | 2 | Drawn by NL                                       |



- Key
- Site Boundary
  - Consented Stranoch Substation
  - Proposed Pole Locations
  - Proposed Alignment
  - Indicative Access
  - Target Notes

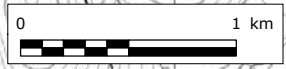
|             |   |                                                   |
|-------------|---|---------------------------------------------------|
| Title       |   | Figure 7.6e                                       |
|             |   | Target Notes                                      |
| Project No. |   | UK12-22885                                        |
| Site        |   | Stranoch and Chirmorie Wind Farms Grid Connection |
| Client      |   | SP Energy Networks                                |
| Date        |   | September 2021                                    |
| Scale       |   | 1:10,000 @ A3                                     |
| Issue       | 2 | Drawn by NL                                       |

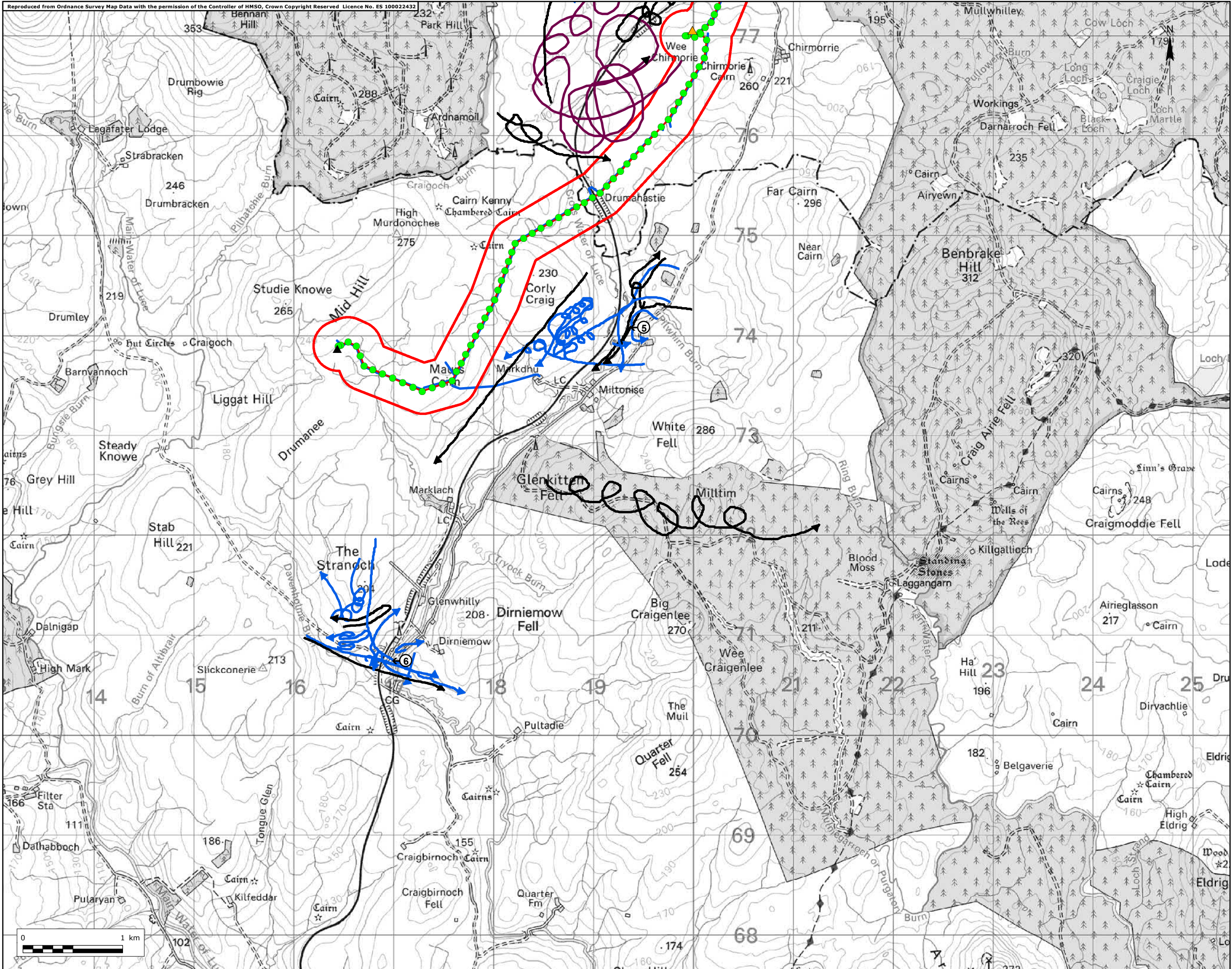




- Key
- Site Boundary
  - ▲ Mark Hill Substation
  - Proposed Pole Locations
  - Proposed Alignment
  - ↗ Vantage Point Locations
- Buzzard Flight Height Start**
- ↗ At 5-20 m
  - ↗ Outwith Collision Risk Height
  - ↗ Unknown Height

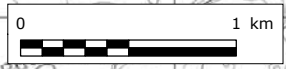
|             |                                                   |
|-------------|---------------------------------------------------|
| Title       | Figure 7.7ai<br>Buzzard Flights                   |
| Project No. | UK12-22885                                        |
| Site        | Stranoch and Chirmorie Wind Farms Grid Connection |
| Client      | SP Energy Networks                                |
| Date        | September 2021                                    |
| Scale       | 1:35,000 @ A3                                     |
| Issue       | 2                                                 |
| Drawn by    | NL                                                |

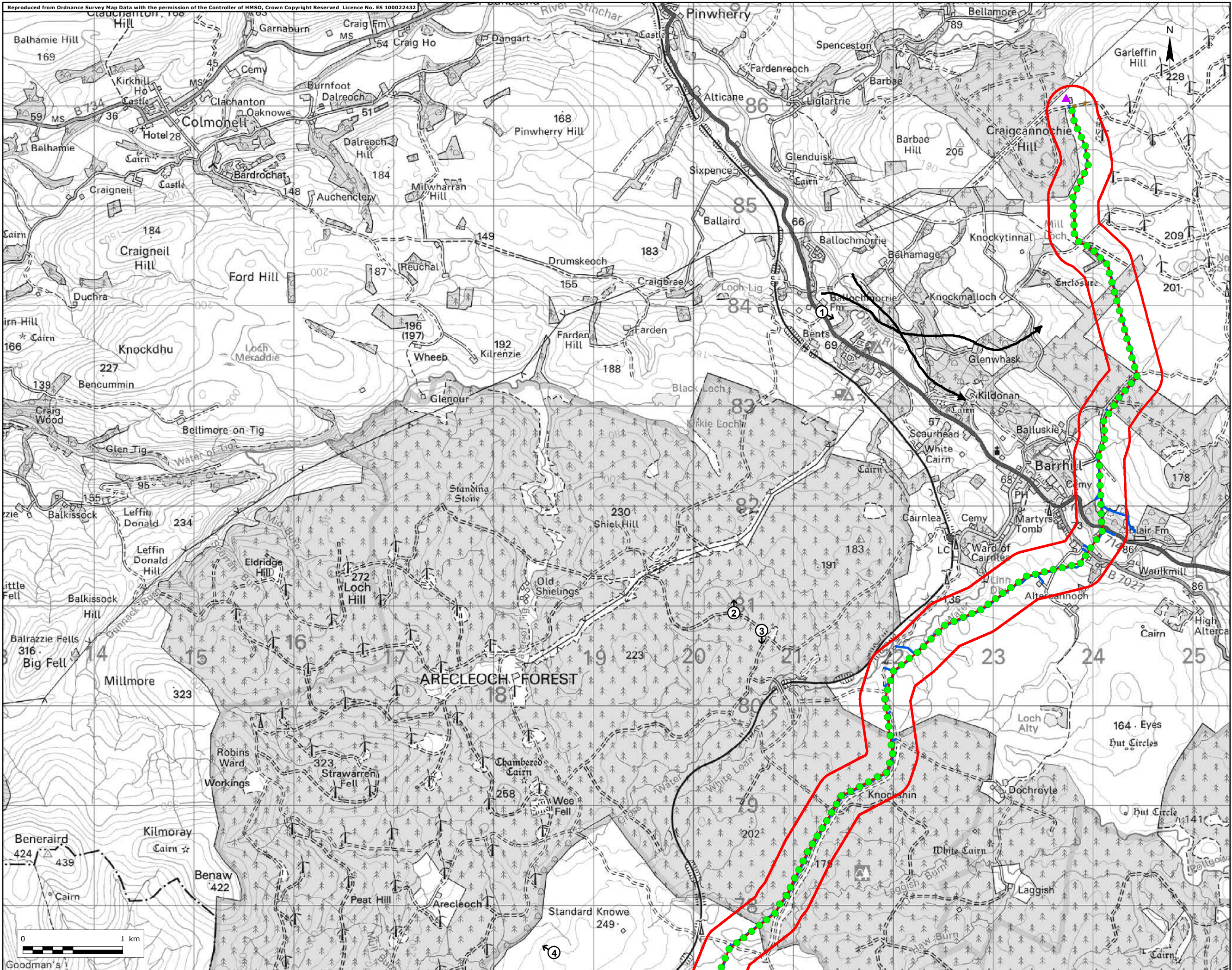




- Key
- Site Boundary
  - ▲ Consented Chirmorie Substation
  - ▲ Consented Stranoch Substation
  - Proposed Pole Locations
  - Proposed Alignment
  - ↑ Vantage Point Locations
- Buzzard Flight Height Start**
- At 5-20 m
  - Outwith Collision Risk Height
  - Unknown Height

|             |                                                   |
|-------------|---------------------------------------------------|
| Title       | Figure 7.7ai<br>Buzzard Flights                   |
| Project No. | UK12-22885                                        |
| Site        | Stranoch and Chirmorie Wind Farms Grid Connection |
| Client      | SP Energy Networks                                |
| Date        | September 2021                                    |
| Scale       | 1:35,000 @ A3                                     |
| Issue       | 2                                                 |
| Drawn by    | NL                                                |

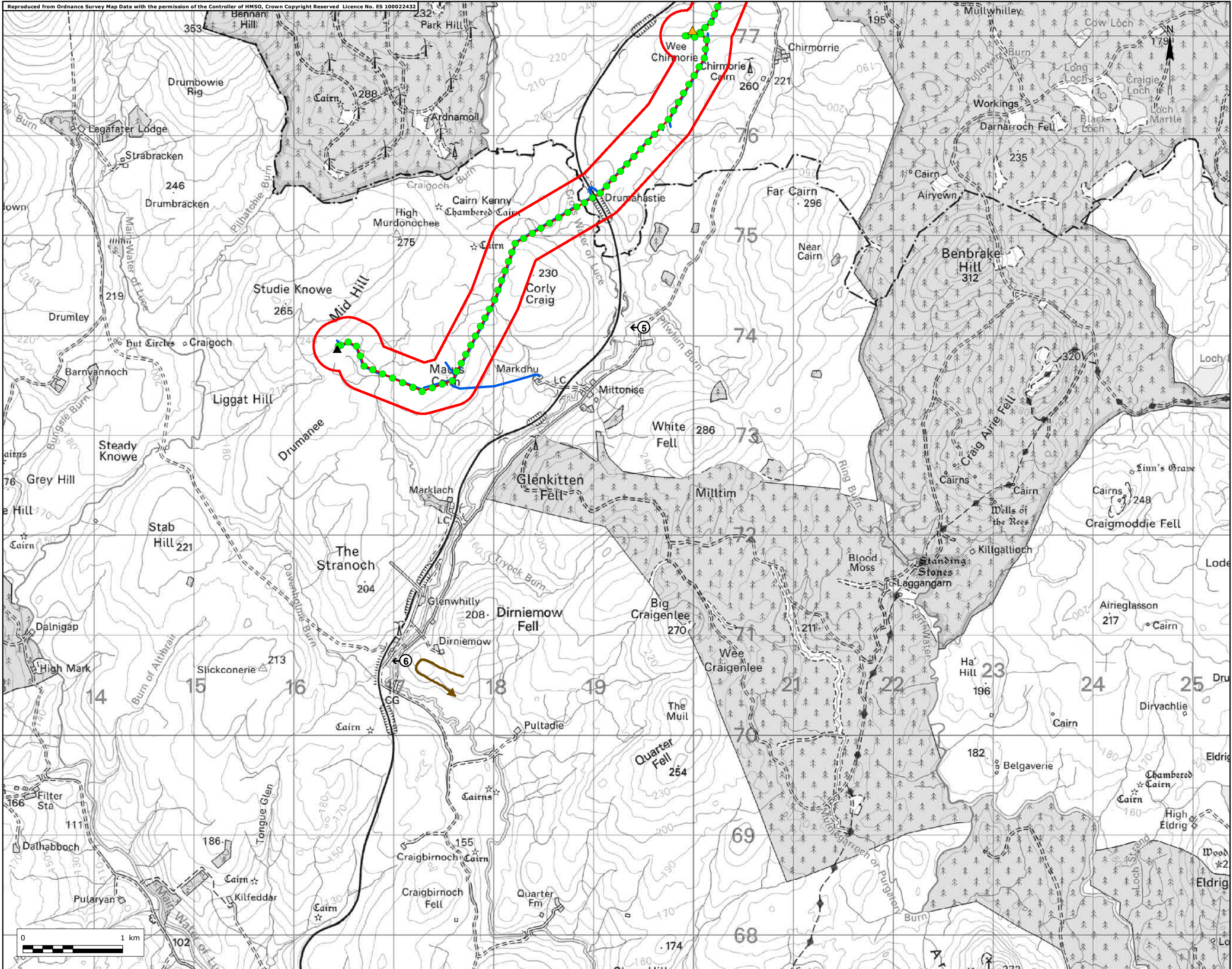




- Key
- Site Boundary
  - ▲ Mark Hill Substation
  - Proposed Pole Locations
  - Proposed Alignment
  - Indicative Access
  - ⤴ Vantage Point Locations
  - Cormorant Flight**
  - Height Start**
  - ➔ Outwith Collision Risk Height

|             |                                                   |
|-------------|---------------------------------------------------|
| Title       | Figure 7.7bi<br>Cormorant Flights                 |
| Project No. | UK12-22885                                        |
| Site        | Stranoch and Chirmorie Wind Farms Grid Connection |
| Client      | SP Energy Networks                                |
| Date        | September 2021                                    |
| Scale       | 1:35,000 @ A3                                     |
| Issue       | 2                                                 |
| Drawn by    | NL                                                |





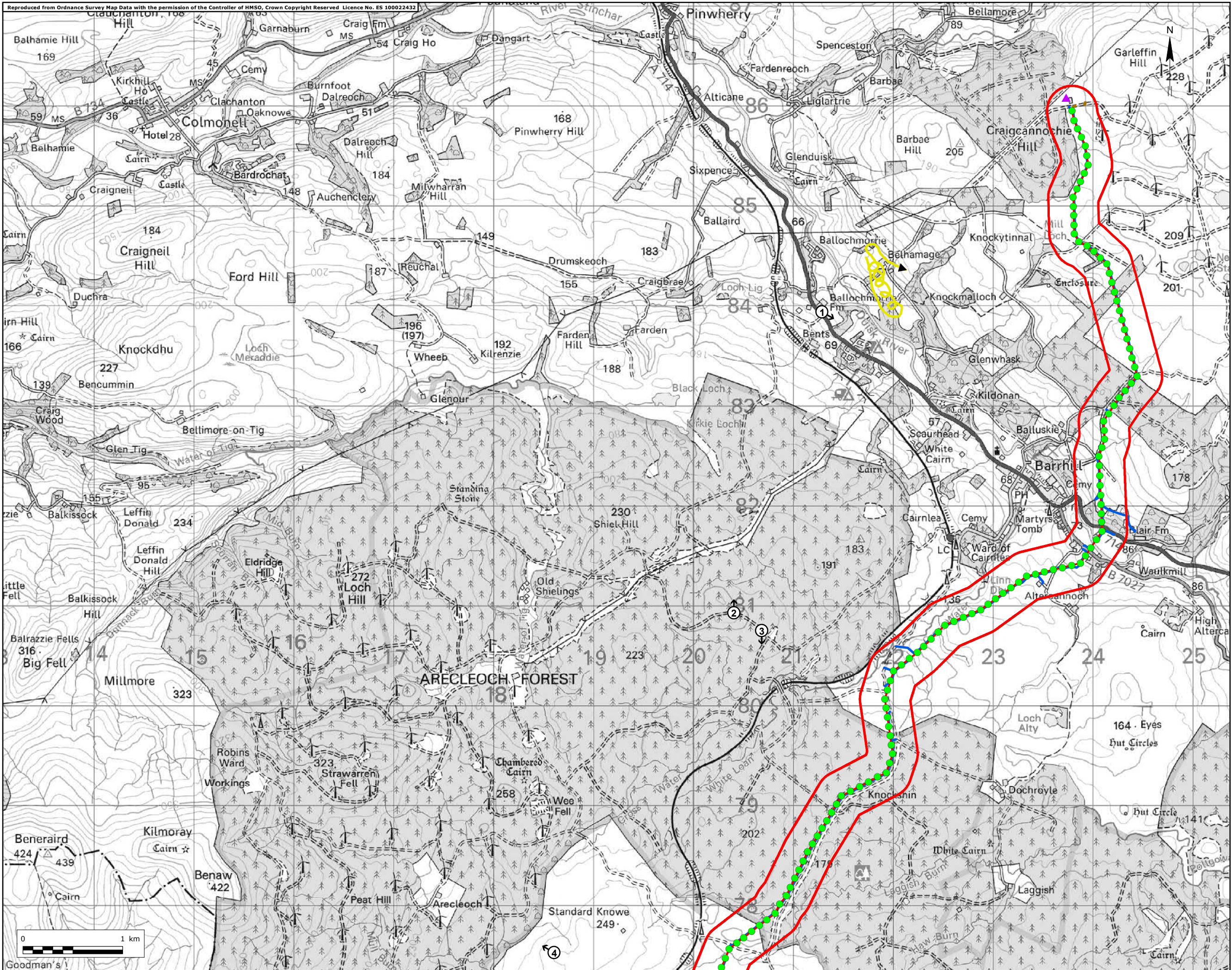
**Key**

- Site Boundary
- ▲ Consented Chirmorie Substation
- ▲ Consented Stranoch Substation
- Proposed Pole Locations
- Proposed Alignment
- Indicative Access
- ⬆ Vantage Point Locations

**Cormorant Flight Height Start**

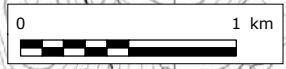
- ➔ At 5-20 m

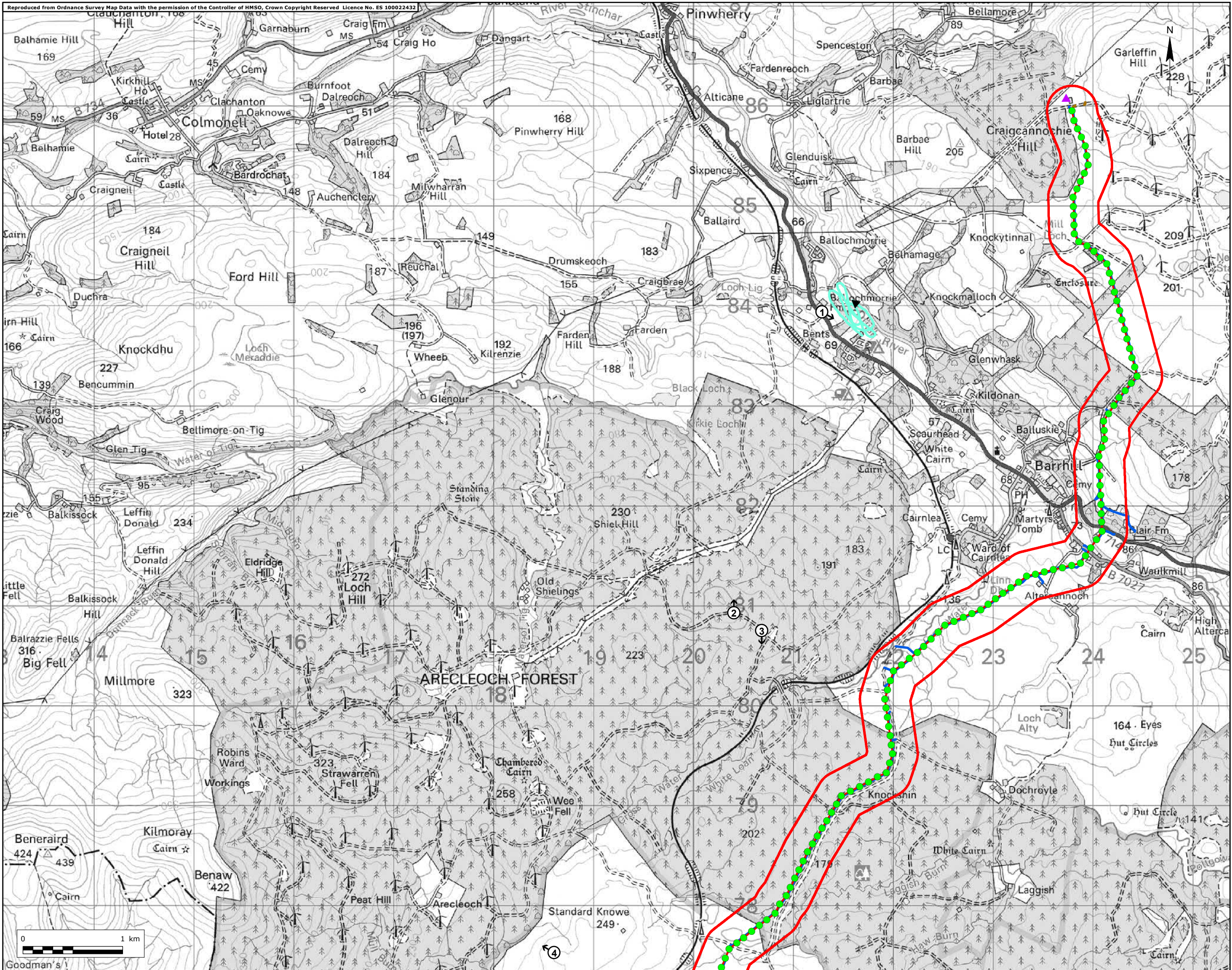
|             |                                                   |
|-------------|---------------------------------------------------|
| Title       | Figure 7.7bii<br>Cormorant Flights                |
| Project No. | UK12-22885                                        |
| Site        | Stranoch and Chirmorie Wind Farms Grid Connection |
| Client      | SP Energy Networks                                |
| Date        | September 2021                                    |
| Scale       | 1:35,000 @ A3                                     |
| Issue       | 2                                                 |
| Drawn by    | NL                                                |



- Key
- Site Boundary
  - ▲ Mark Hill Substation
  - Proposed Pole Locations
  - Proposed Alignment
  - Indicative Access
  - ⤴ Vantage Point Locations
  - Common Gull Flight**
  - Height Start**
  - ▶ Outwith Collision Risk Height

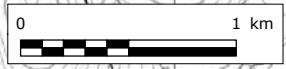
|             |                                                   |
|-------------|---------------------------------------------------|
| Title       | Figure 7.7c<br>Common Gull Flights                |
| Project No. | UK12-22885                                        |
| Site        | Stranoch and Chirmorie Wind Farms Grid Connection |
| Client      | SP Energy Networks                                |
| Date        | September 2021                                    |
| Scale       | 1:35,000 @ A3                                     |
| Issue       | 2                                                 |
| Drawn by    | NL                                                |

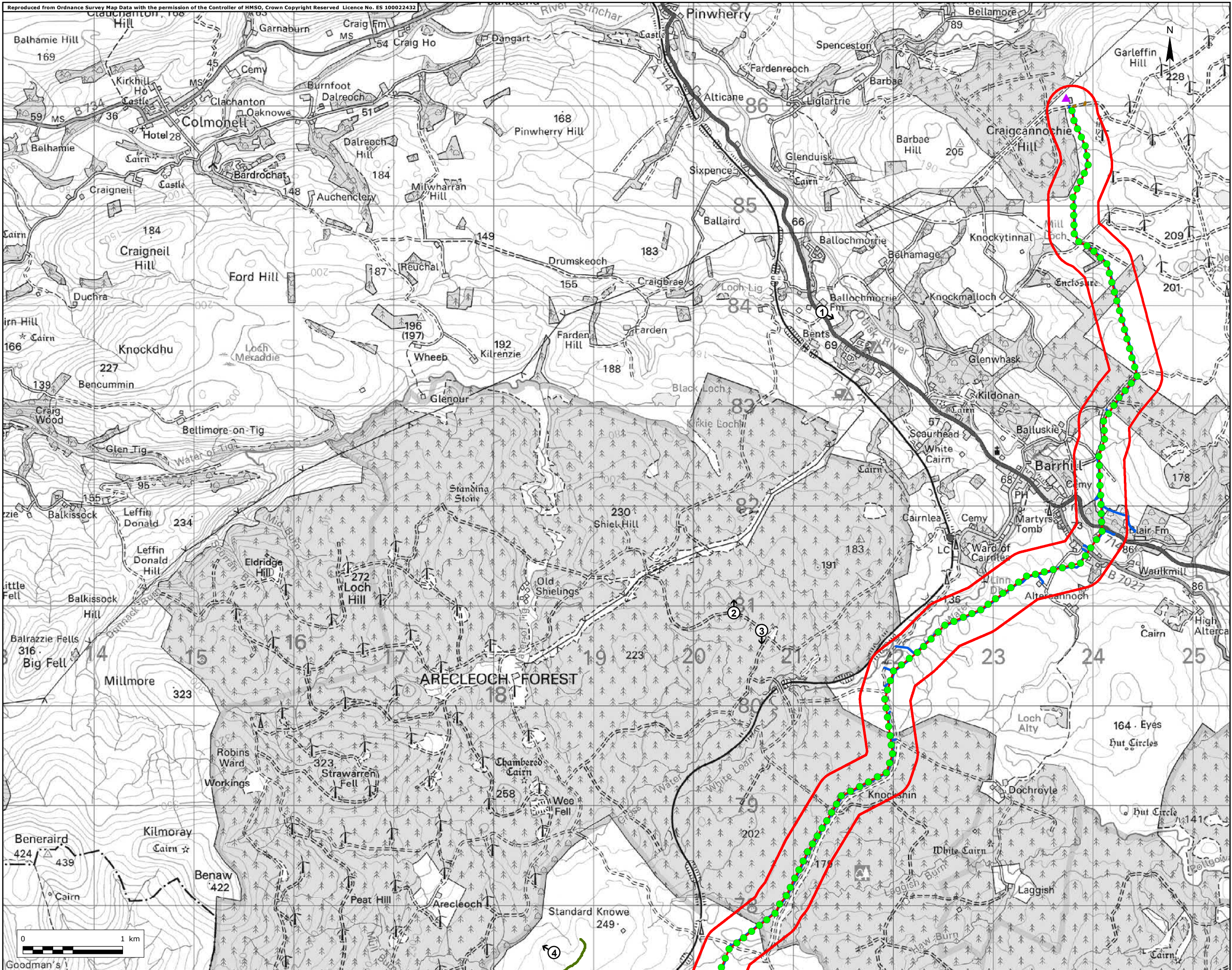




- Key
- Site Boundary
  - ▲ Mark Hill Substation
  - Proposed Pole Locations
  - Proposed Alignment
  - Indicative Access
  - ⬆ Vantage Point Locations
- Coot Flight Height Start**
- ▶ Outwith Collision Risk Height

|             |                                                         |
|-------------|---------------------------------------------------------|
| Title       | Figure 7.7d<br>Coot Flights                             |
| Project No. | UK12-22885                                              |
| Site        | Stranoch and Chirmorie<br>Wind Farms Grid<br>Connection |
| Client      | SP Energy Networks                                      |
| Date        | September 2021                                          |
| Scale       | 1:35,000 @ A3                                           |
| Issue       | 2                                                       |
| Drawn by    | NL                                                      |

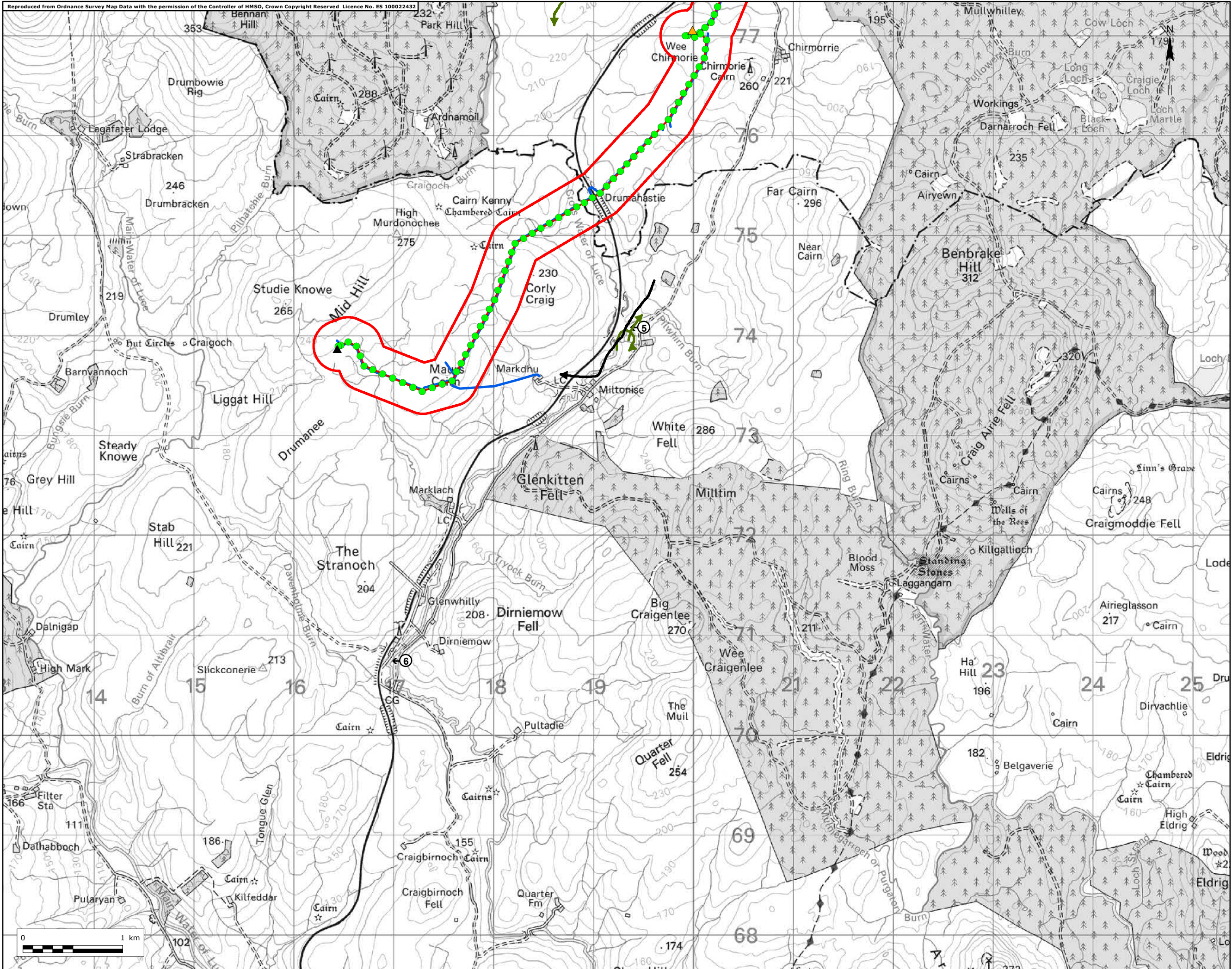




- Key
- Site Boundary
  - ▲ Mark Hill Substation
  - Proposed Pole Locations
  - Proposed Alignment
  - Indicative Access
  - ⊕ Vantage Point Locations
- Curlew Flight Height Start**
- ➔ At 5-20 m

|             |                                                         |
|-------------|---------------------------------------------------------|
| Title       | Figure 7.7ei<br>Curlew Flights                          |
| Project No. | UK12-22885                                              |
| Site        | Stranoch and Chirmorie<br>Wind Farms Grid<br>Connection |
| Client      | SP Energy Networks                                      |
| Date        | September 2021                                          |
| Scale       | 1:35,000 @ A3                                           |
| Issue       | 2                                                       |
| Drawn by    | NL                                                      |





- Key
- Site Boundary
  - ▲ Consented Chirmorie Substation
  - ▲ Consented Stranoch Substation
  - Proposed Pole Locations
  - Proposed Alignment
  - Indicative Access
  - ⬆ Vantage Point Locations
  - ⬆ Outwith Collision Risk Height
- Curlew Flight Height Start**
- ➔ At 5-20 m

|             |                                                   |
|-------------|---------------------------------------------------|
| Title       | Figure 7.7eii<br>Curlew Flights                   |
| Project No. | UK12-22885                                        |
| Site        | Stranoch and Chirmorie Wind Farms Grid Connection |
| Client      | SP Energy Networks                                |
| Date        | September 2021                                    |
| Scale       | 1:35,000 @ A3                                     |
| Issue       | 2                                                 |
| Drawn by    | NL                                                |