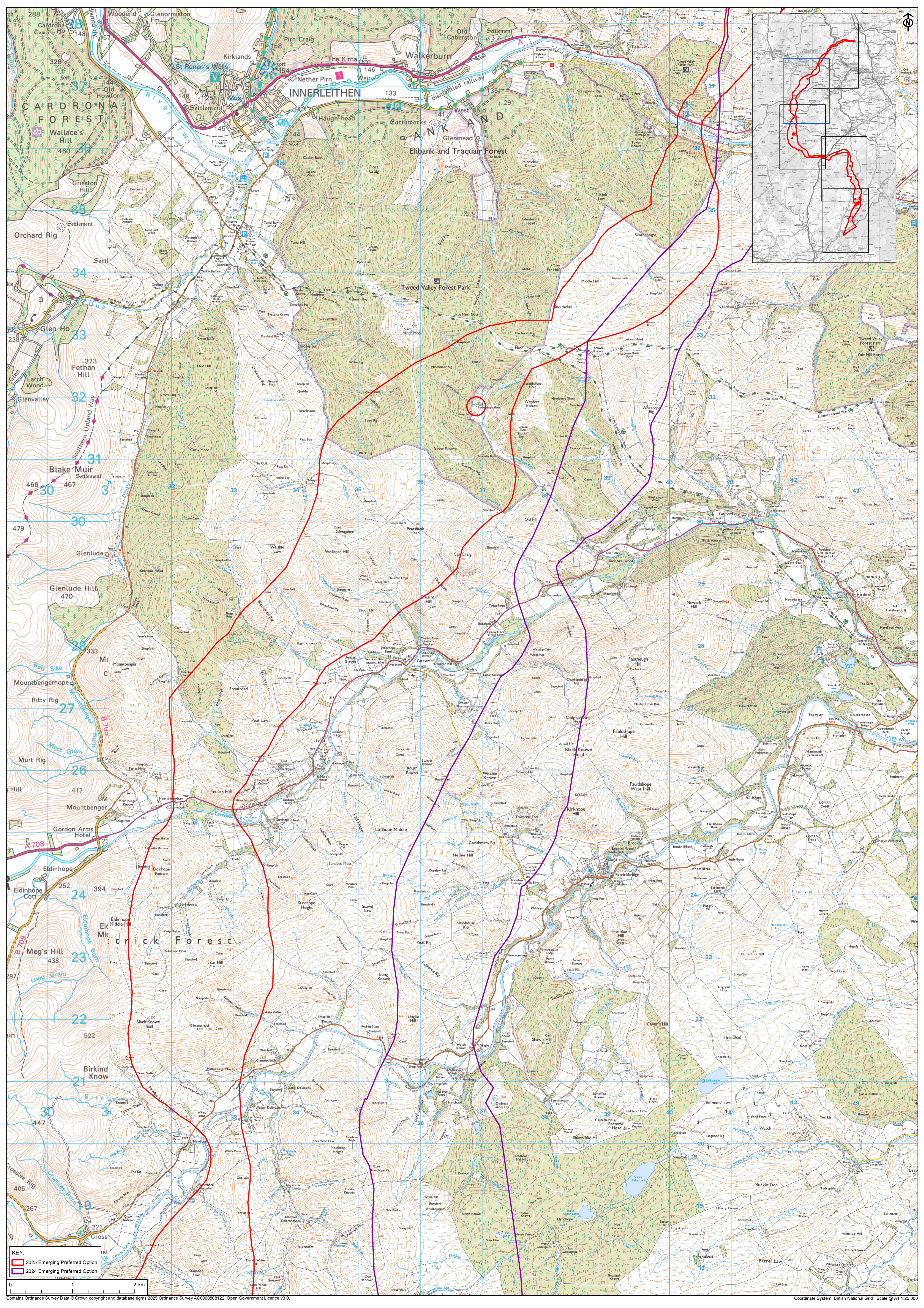


KEY:

- 2025 Emerging Preferred Option
- 2024 Emerging Preferred Option
- Proposed Gala North Substation Location
- Existing Transmission System
- 132 kV Substation
- SPT/NGT Network
- 132kV OHL
- 400kV OHL

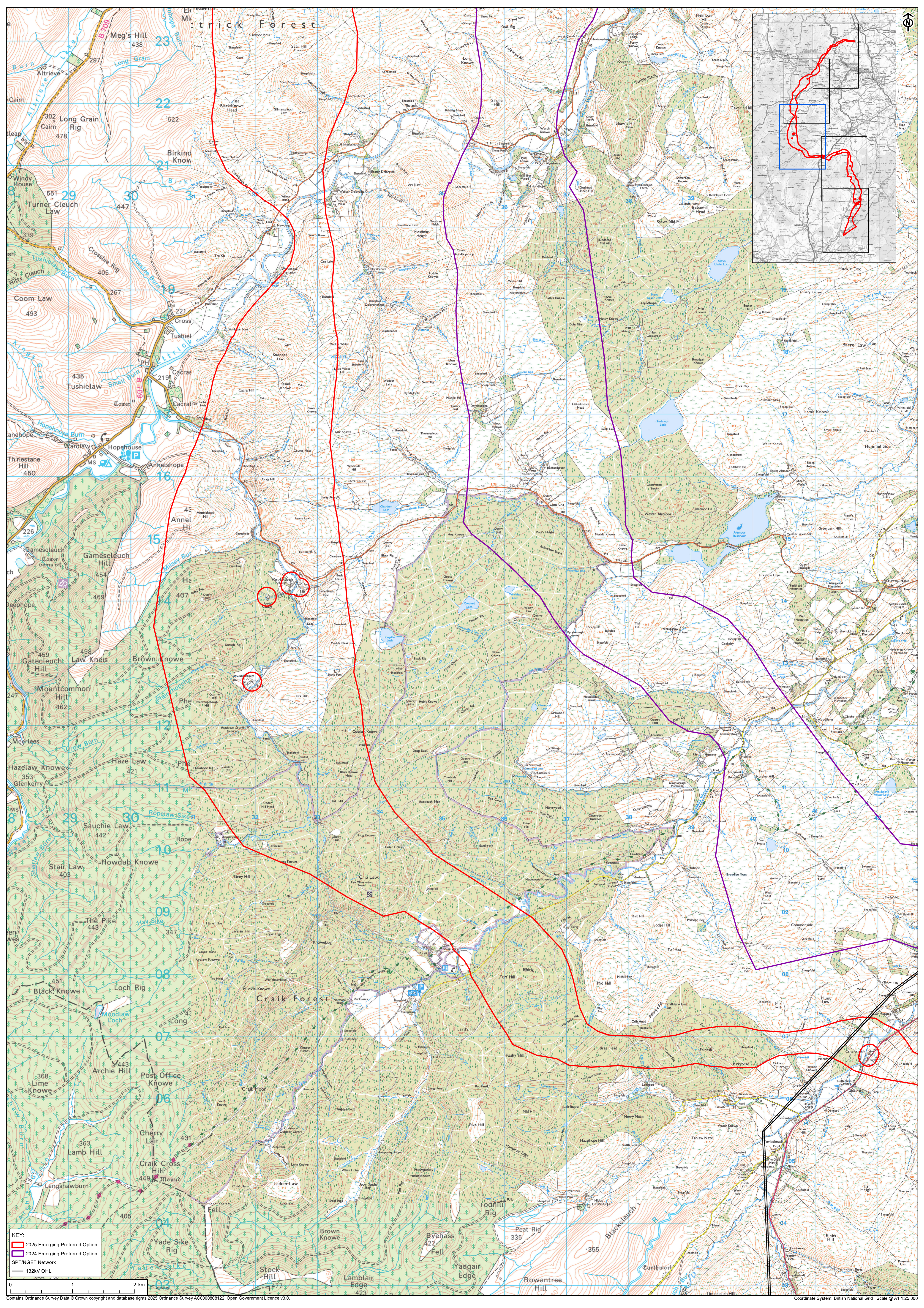


KEY:
2025 Emerging Preferred Option
2024 Emerging Preferred Option

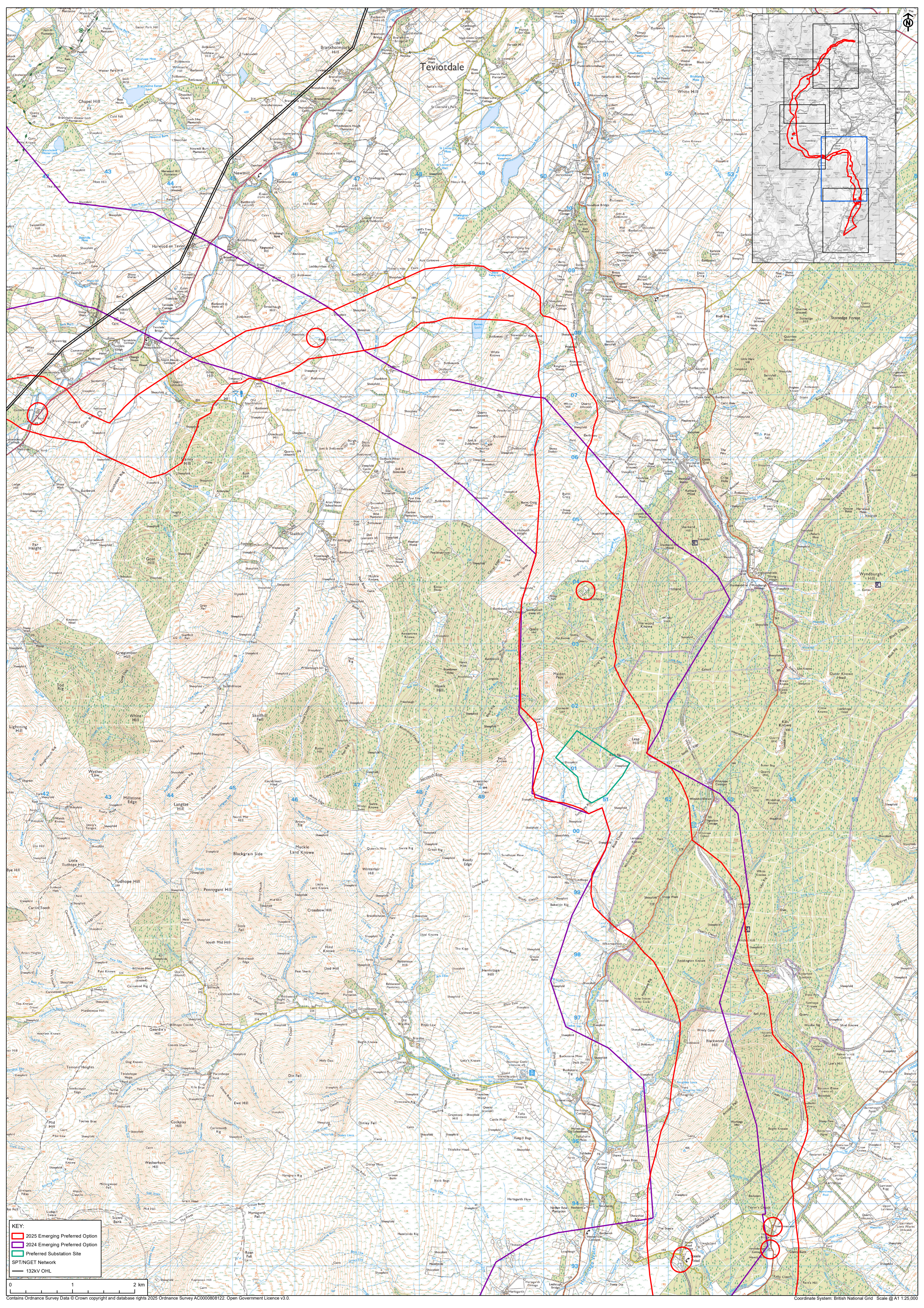
0 1 2 km

Contains Ordnance Survey Data © Crown copyright and database rights 2025 Ordnance Survey AC0000808122. Open Government Licence v3.0.

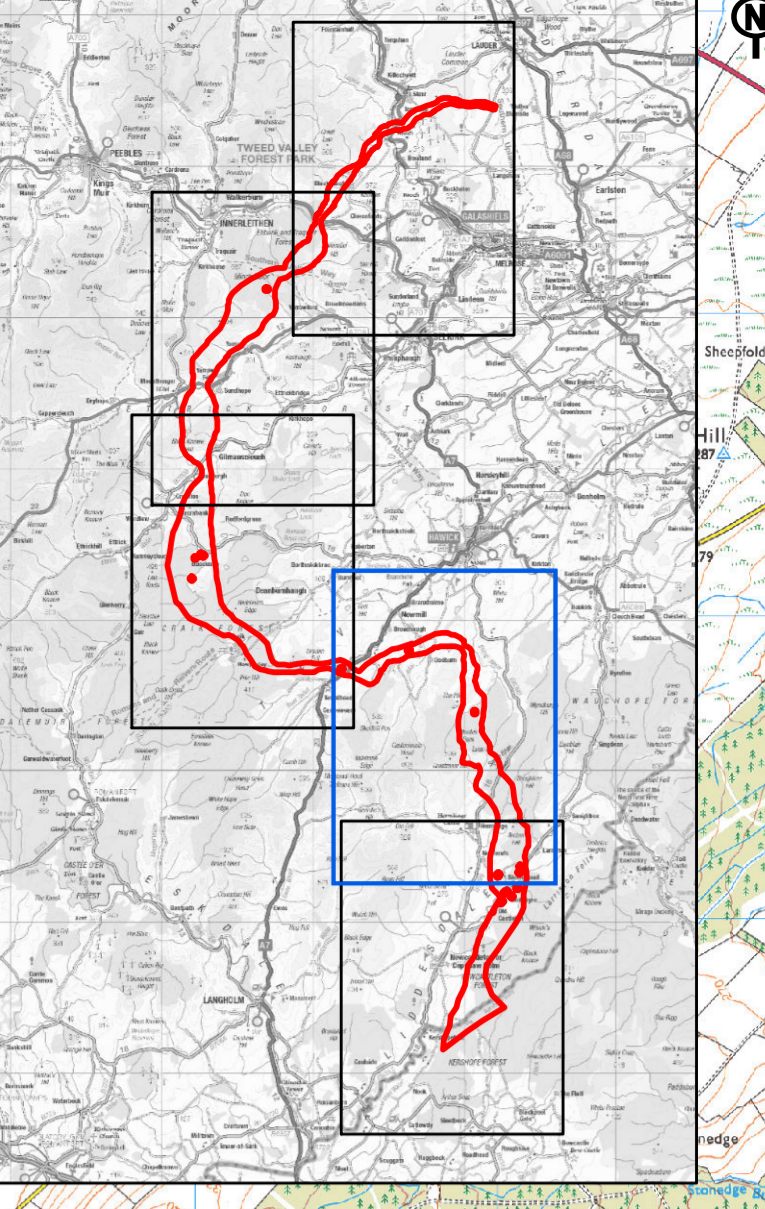
Coordinate System: British National Grid Scale @ A1 1:25,000



KEY:
2025 Emerging Preferred Option
2024 Emerging Preferred Option
SPT/INSET Network
132kV OHL

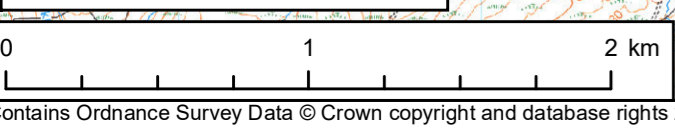


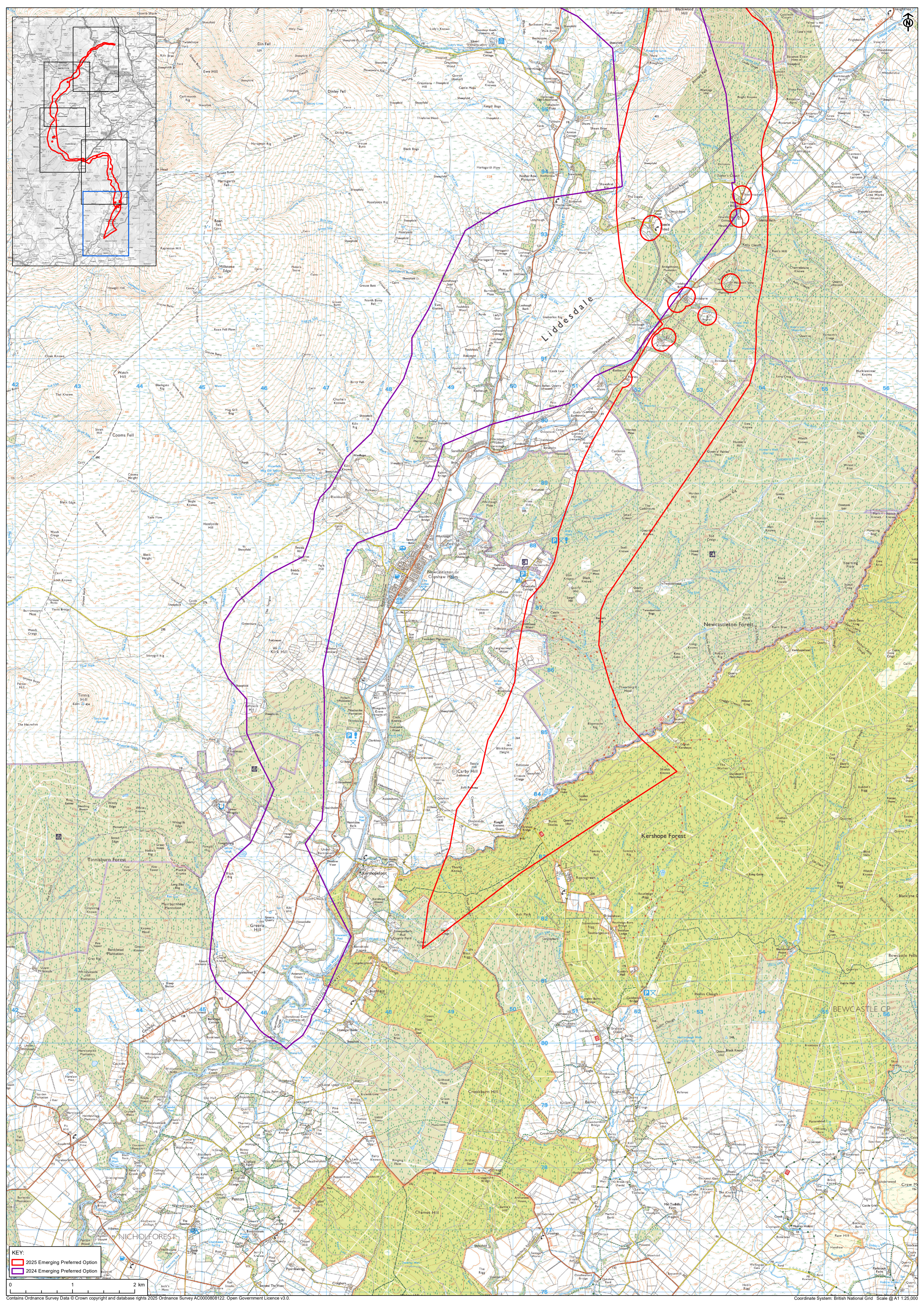
Teviotdale



KEY:

- 2025 Emerging Preferred Option
- 2024 Emerging Preferred Option
- Preferred Substation Site
- SPT/NGT Network
- 132kV OHL





KEY:
[Red Outline] 2025 Emerging Preferred Option
[Purple Outline] 2024 Emerging Preferred Option