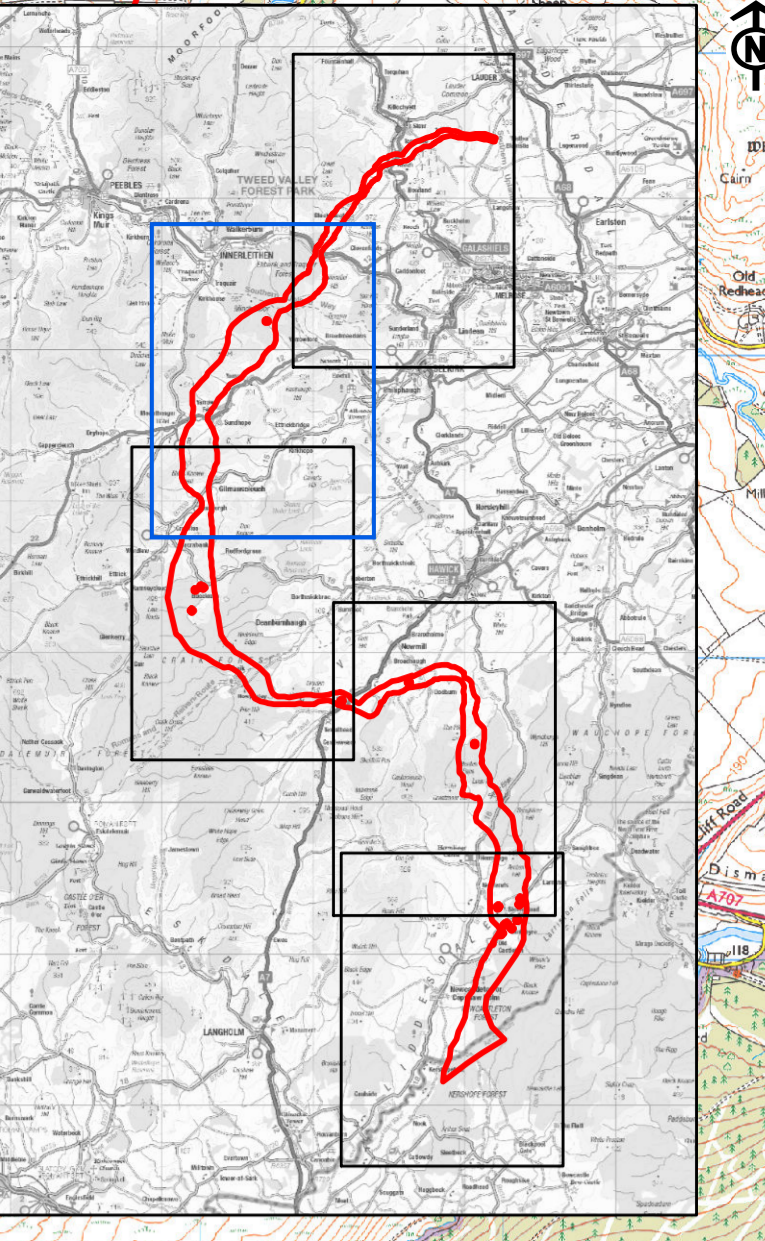
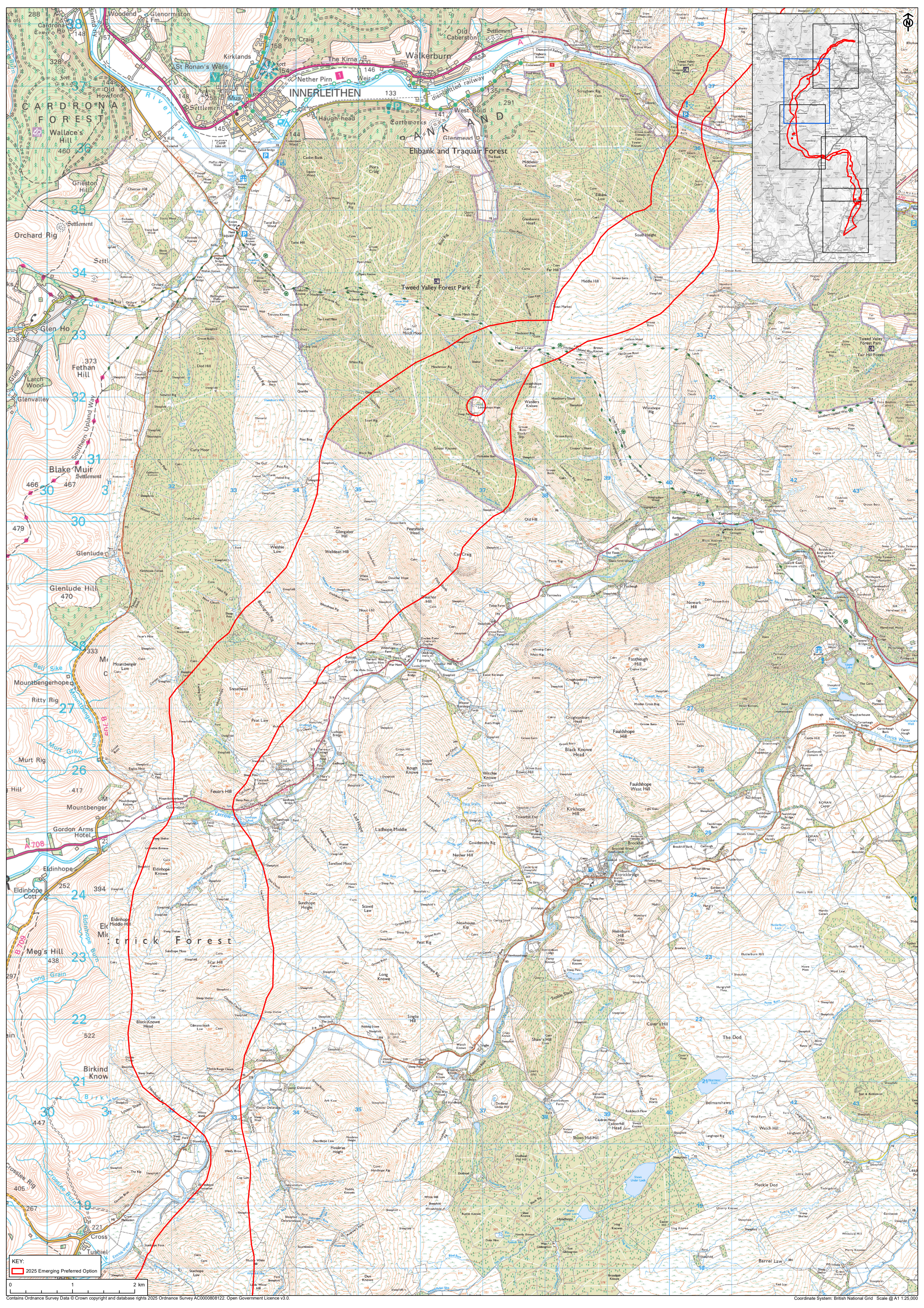


KEY:

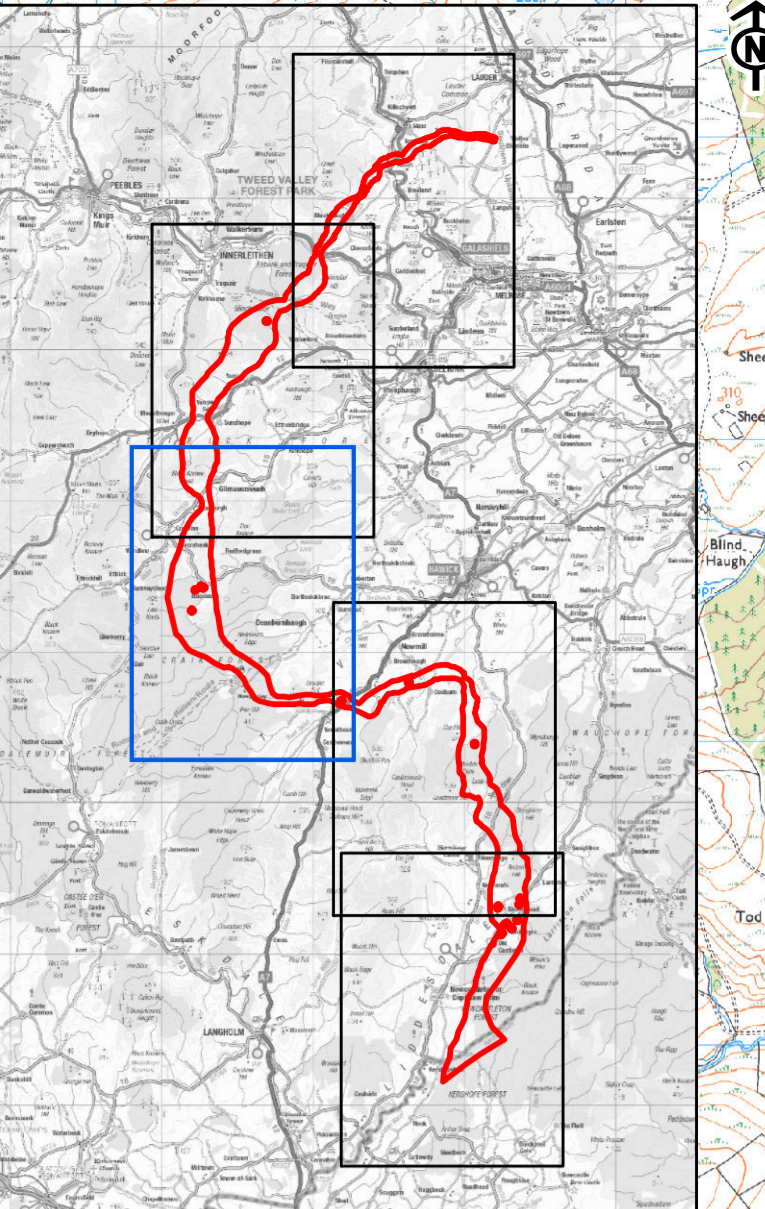
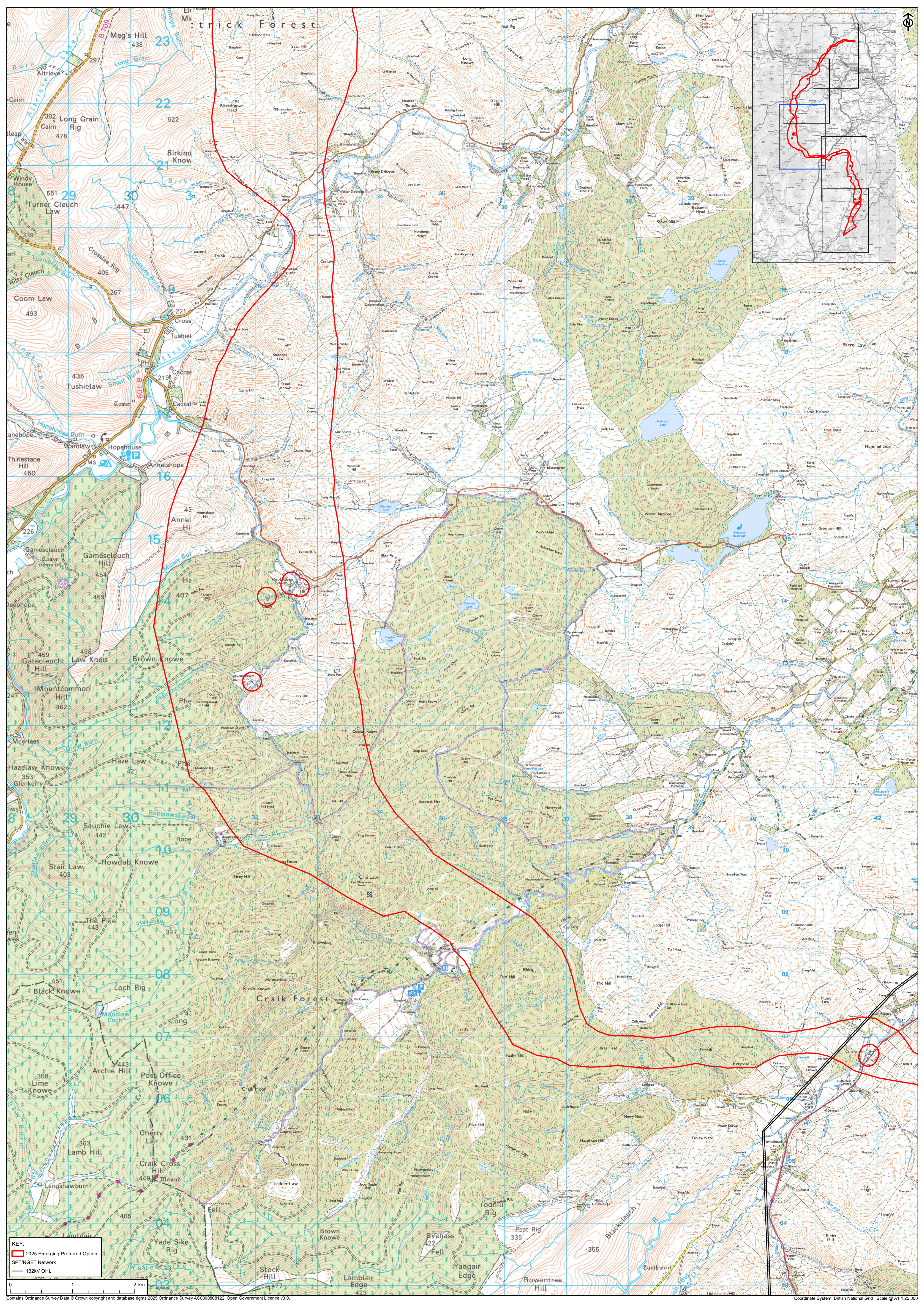
- 2025 Emerging Preferred Option
- Proposed Gala North Substation Location
- Existing Transmission System
- 132 kV Substation
- SPT/NGT Network
- 132kV OHL
- 400kV OHL

0 1 2 km

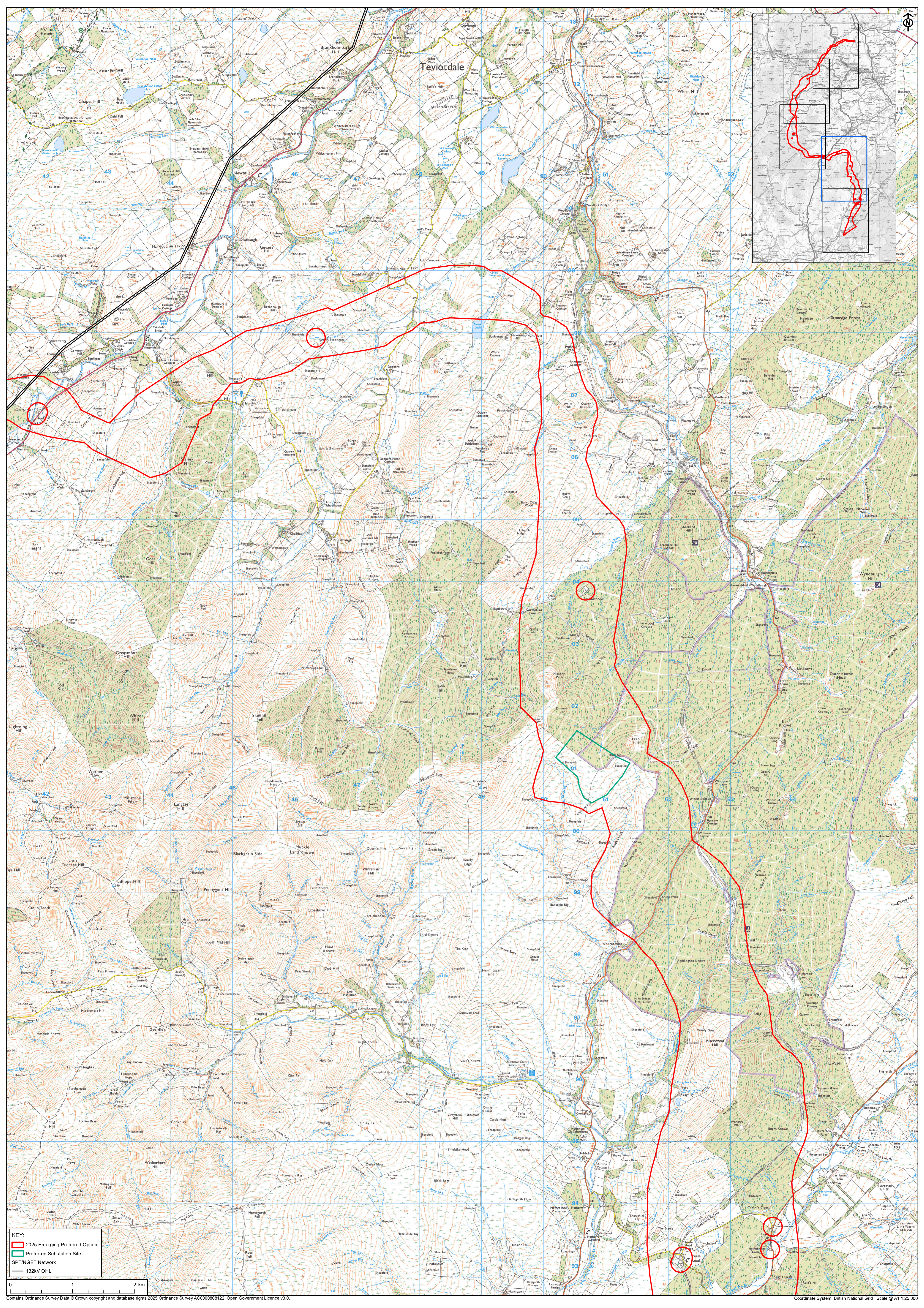


KEY:
2025 Emerging Preferred Option

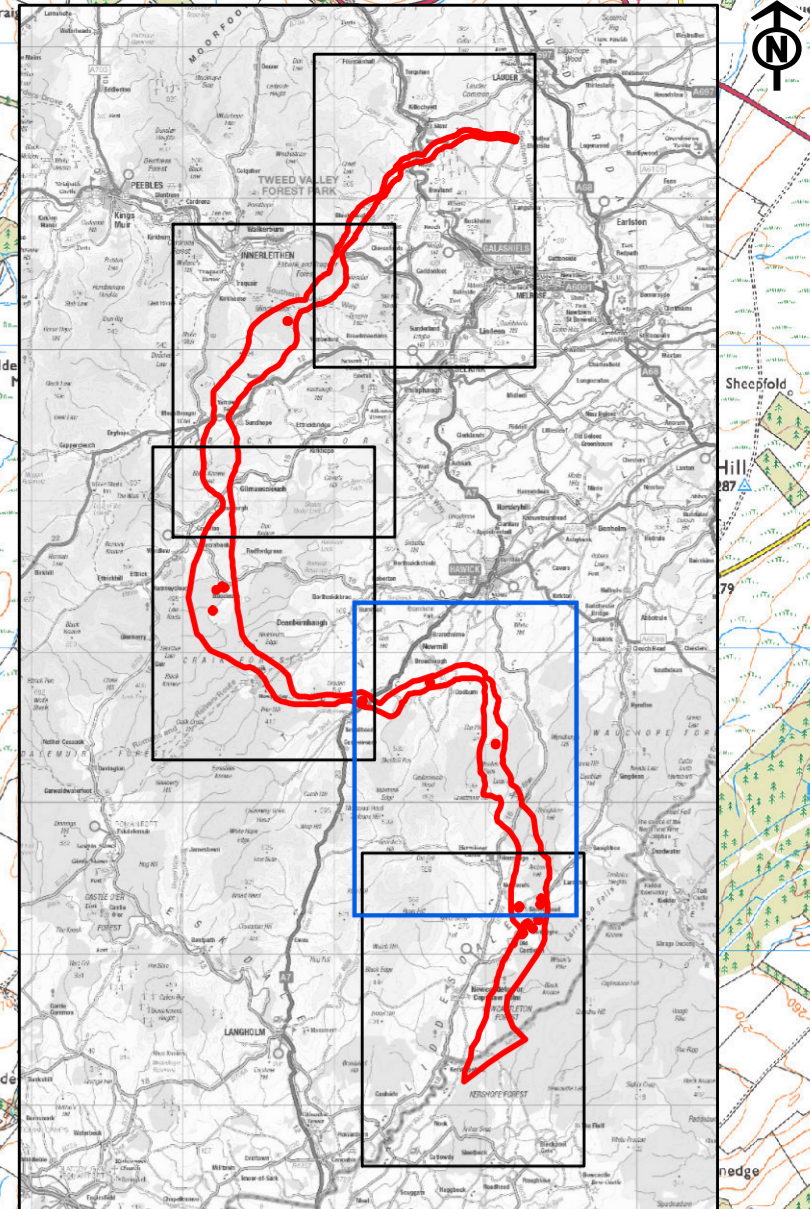
0 1 2 km



KEY:
[Red line] 2025 Emerging Preferred Option
[Blue line] SPT/INGET Network
[Black line] 132KV OHL

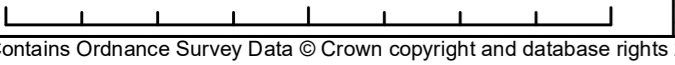


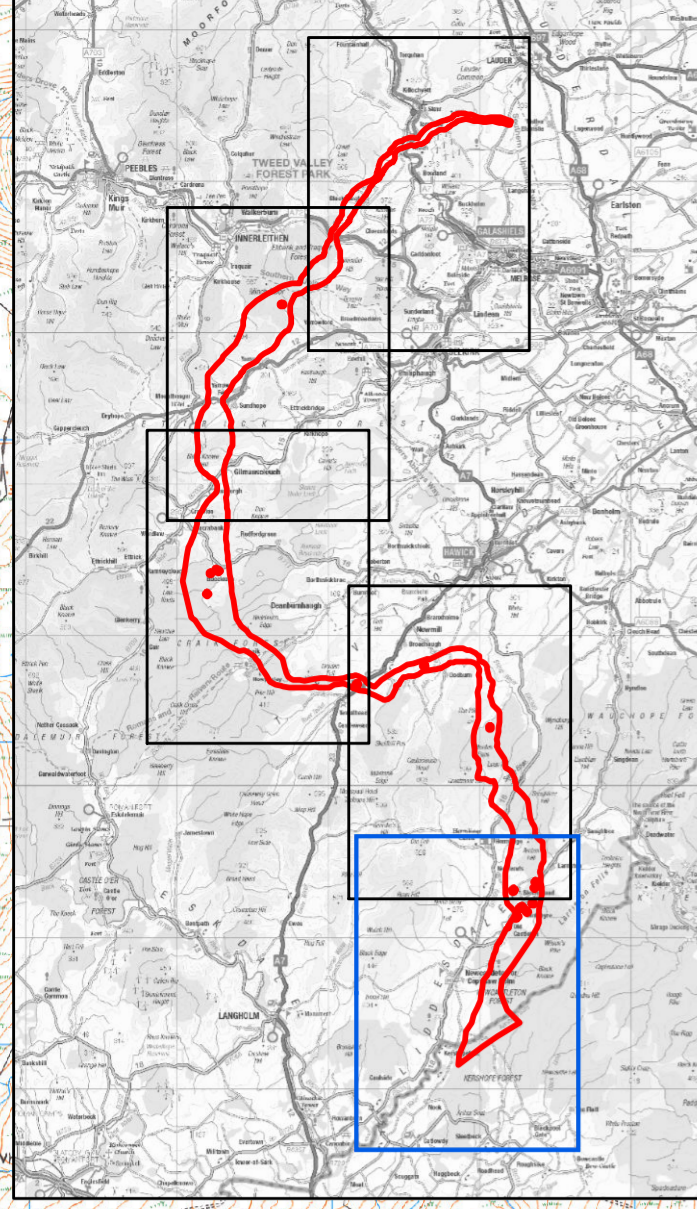
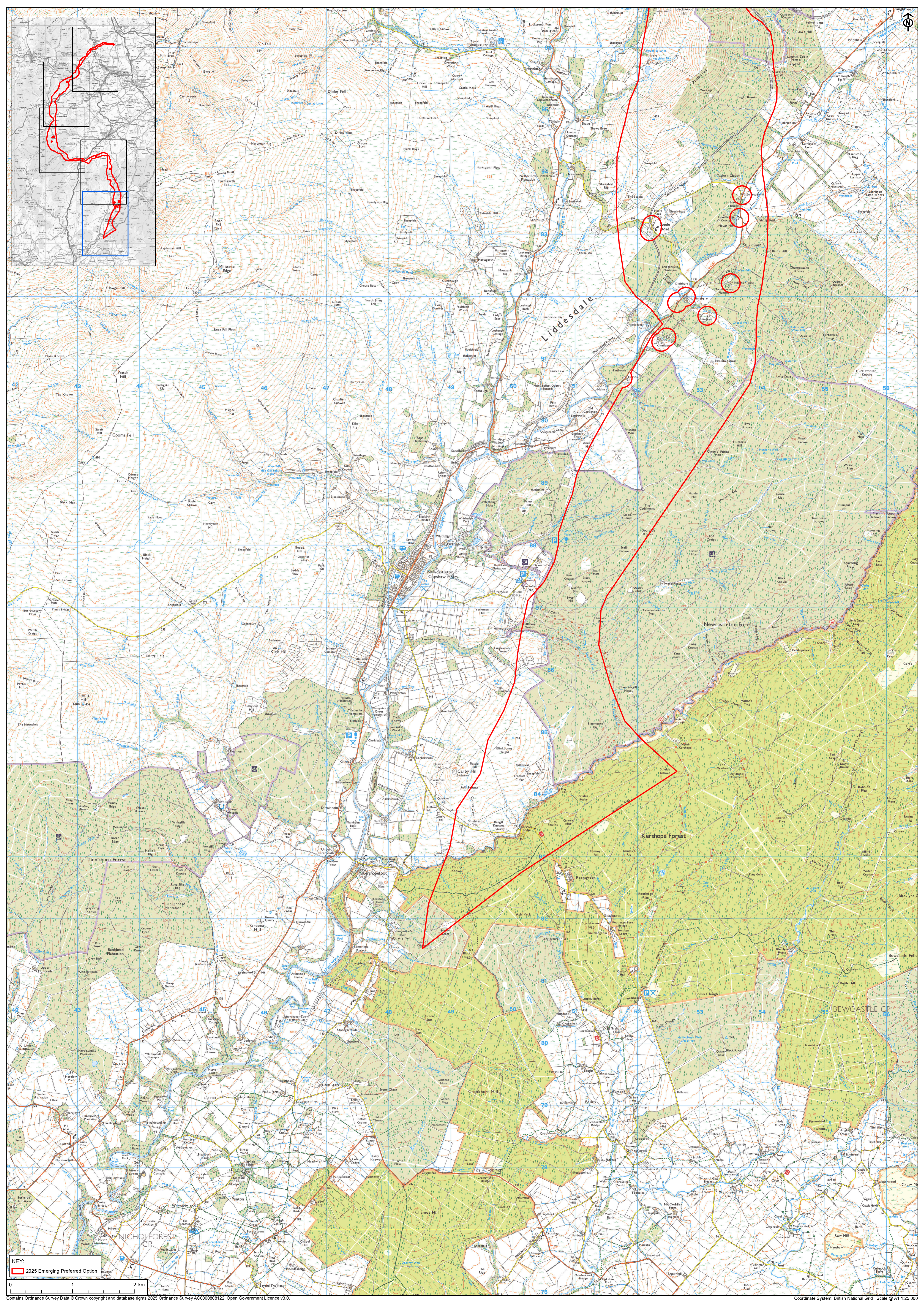
Teviotdale



KEY:

- 2025 Emerging Preferred Option
- Preferred Substation Site
- SPT/NGET Network
- 132kV OHL





KEY:
2025 Emerging Preferred Option