

SP Energy Networks: Community Energy Support

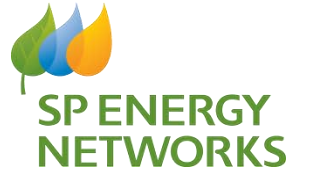
Nathan Hill: Energy Savings Trust

energy
saving
trust

SP Energy Networks: Community Energy Support

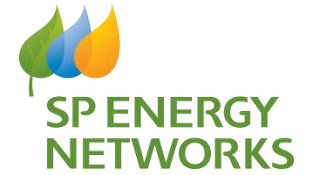


Working within Iberdrola



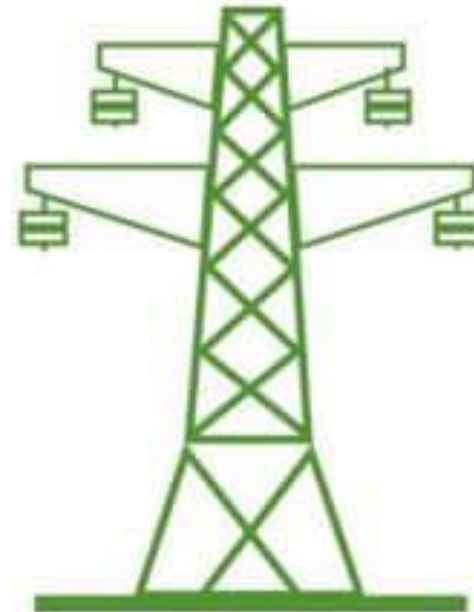
ScottishPower is part of the **Iberdrola** Group, a global energy company and a world leader in wind energy.

SP Energy Networks



Safe and Reliable Electricity Supply

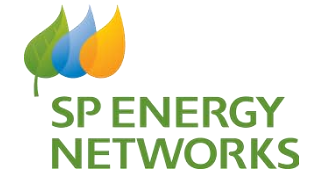
24hrs a day
365 Days a year



2m Customers
Central and Southern
Scotland

1.5m Customers
Merseyside, Cheshire,
North Wales and North
Shropshire

Community Energy- Introductions



Liam Cantwell

Community Energy Engagement Manager- SPD



Louise Taylor

Community Energy Engagement Manager- SPM



Nathan Hill: Energy Savings Trust

energy
saving
trust

Community Energy Strategy

Government:

- Sets overall energy policy and objectives.

Ofgem:

- Regulates the energy market, sets requirements for DNOs, and ensures compliance.

SP Energy Networks:

- Develops a comprehensive business plan (ED2) outlining how we will manage and improve the electricity distribution network over the five-year period. (Resources, support, and technical assistance to community energy projects.)

How our commitments will shape our actions

“Provide **technical advice and support** through **dedicated Community Energy advisors**, guiding local groups through the connections process and linking them to local support organisations.”

Support

“**Partner with local organisations** to deliver large-scale **community energy awareness campaigns** and educational outreach, remaining flexible and innovative throughout ED2.”

Awareness

“Submit a **Community Energy Strategy** with our ED2 Business Plan, **reviewed annually**, to **support community groups** and their projects.”

Continuous Improvement

Our Community Energy Strategy

SP Energy Networks

Community Energy Strategy



We are actively working with the Community Energy Representative Bodies that operate within our licence areas.



Internal Use

Community Energy in our licence areas

10,284

members of Community Energy Groups

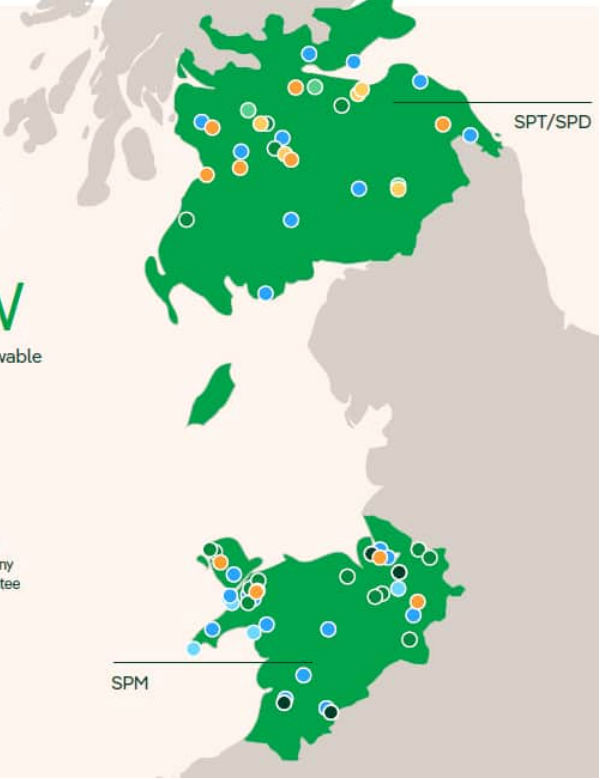
19.3 MW

community-owned renewable electricity capacity

70

community groups comprising of:

- Charity
- Community Benefit Society
- Community Interest Company
- Company limited by Guarantee
- Co-operative
- Unincorporated
- Other





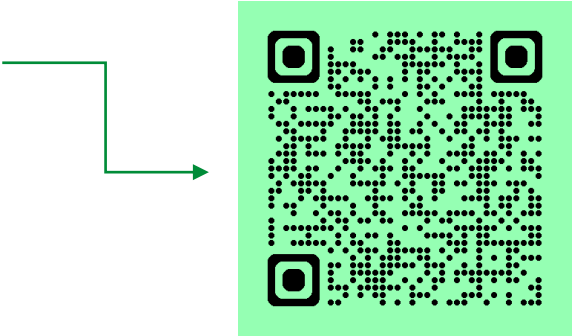
- **Dedicated Channel:**
Communityenergy@spenergynetworks.co.uk

- **Optioneering and Guidance:**
 - Prepare
 - Resources
 - Application support

- **Innovation Support:**
Exploring innovative technologies/funding

- **Capacity Building:**
Identifying/addressing skills knowledge gaps

- **Streamlined Support:**
New Dedicated **Website**



Staying Informed

Keeping our stakeholders updated on resources and industry developments.

Collaboration

Working with a variety of partners to reach Community Energy Groups.

Multi-Channel Engagement

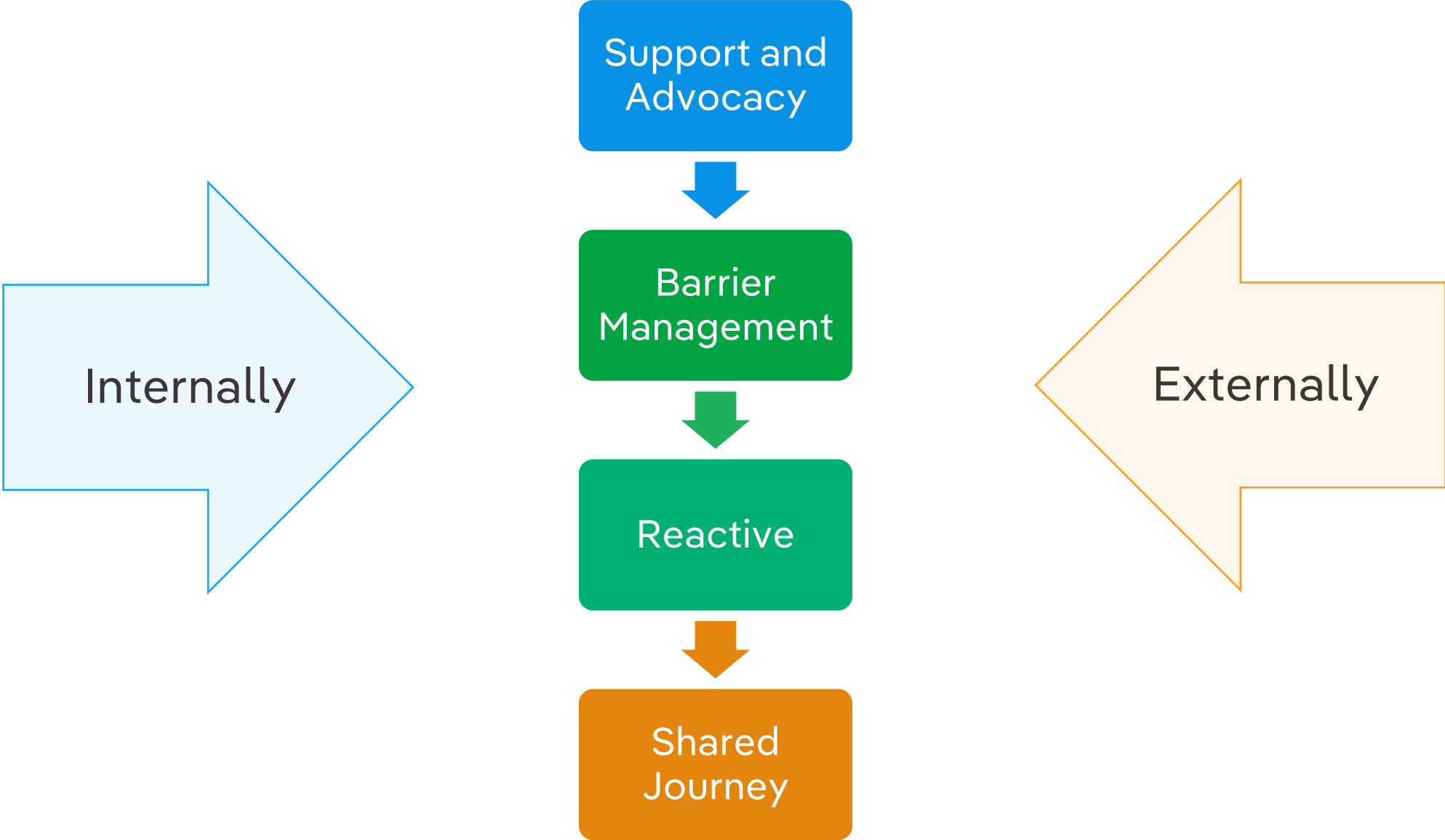
Diverse communication tools to connect effectively.

Active Participation

Building relationships through industry conferences.

Register as a Stakeholder:





Community Energy Webpage:



Register as a Stakeholder:



Community Energy Strategy



Jo Gamwell,
Technical specialist

Ricardo Energy and Environment

When I say “Community energy project”...

I might be thinking:

- a single EV charger



When I say “Community energy project”...

I might be thinking:

- A single EV charger
- PV on a community hall



When I say “Community energy project”...

I might be thinking:

- A single EV charger
- PV on a community hall
- An energy supply to a village



When I say “Community energy project”...

I might be thinking:

- A single EV charger
- PV on a community hall
- An energy supply to a village
- A solar/ wind farm exporting energy to the grid

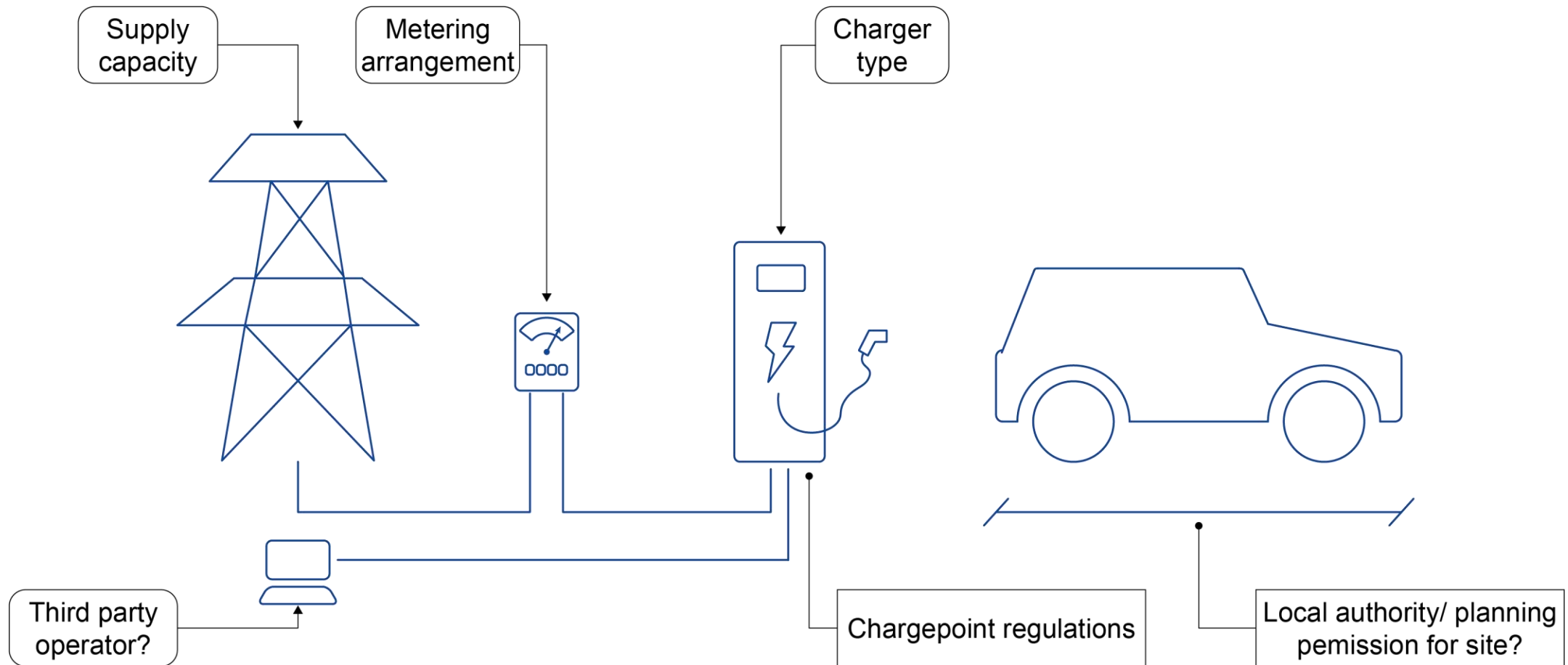


So, why do you want to do this?

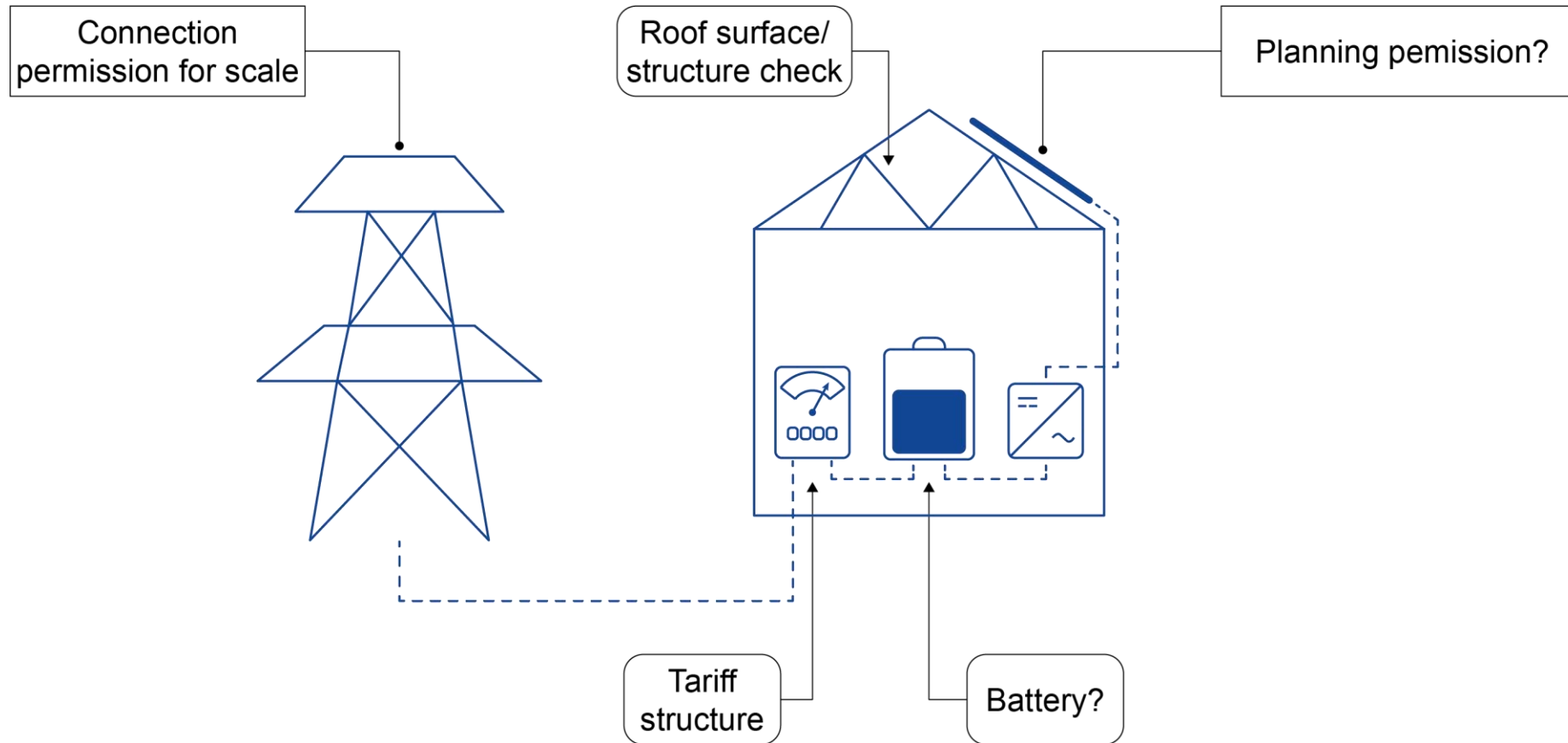
What problem are you trying to solve:

- Reducing running costs at a community facility?
- Reducing energy bills in people's homes?
- Generating income to fund other community projects?
- Taking responsibility for achieving net zero?
- Making it easier for local residents to adopt EVs?
- Showcasing technologies and improving carbon literacy?

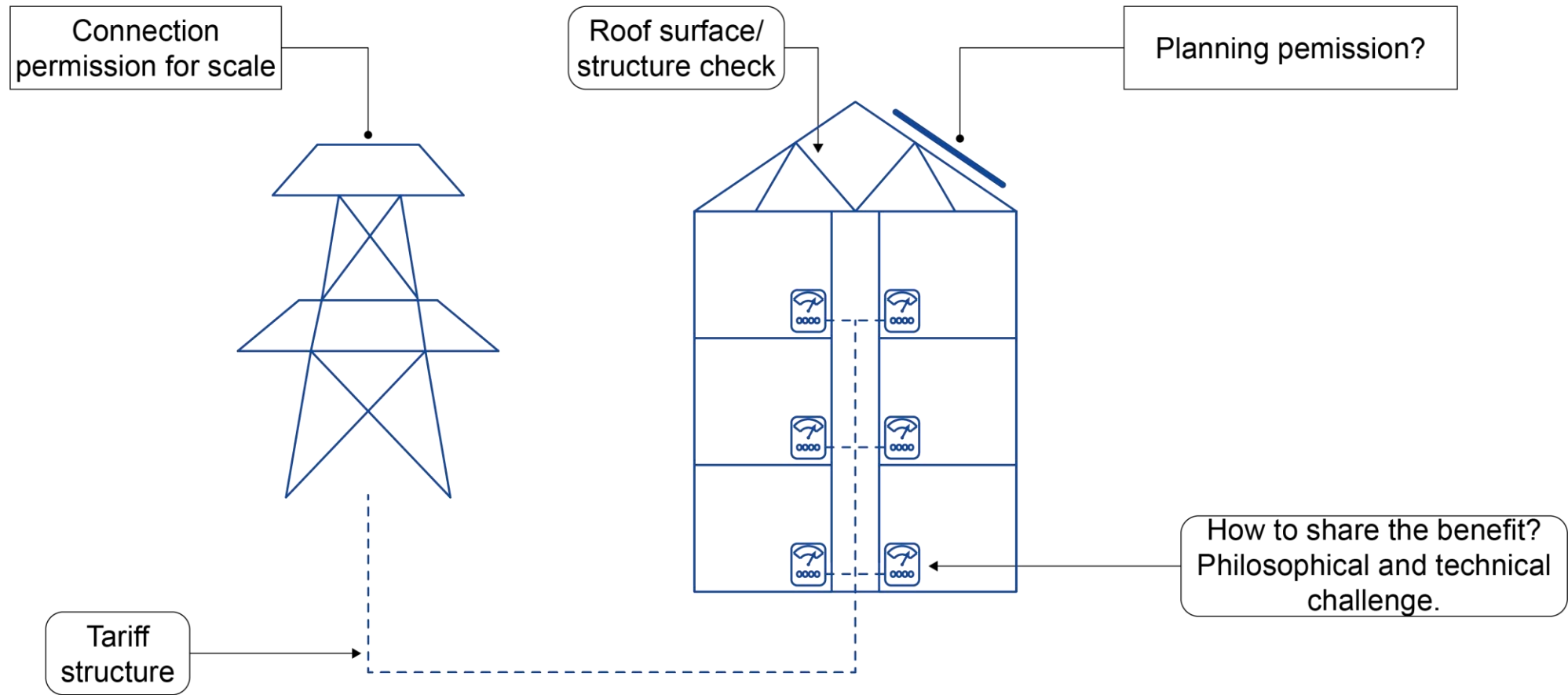
What does a system look like- public EV charger



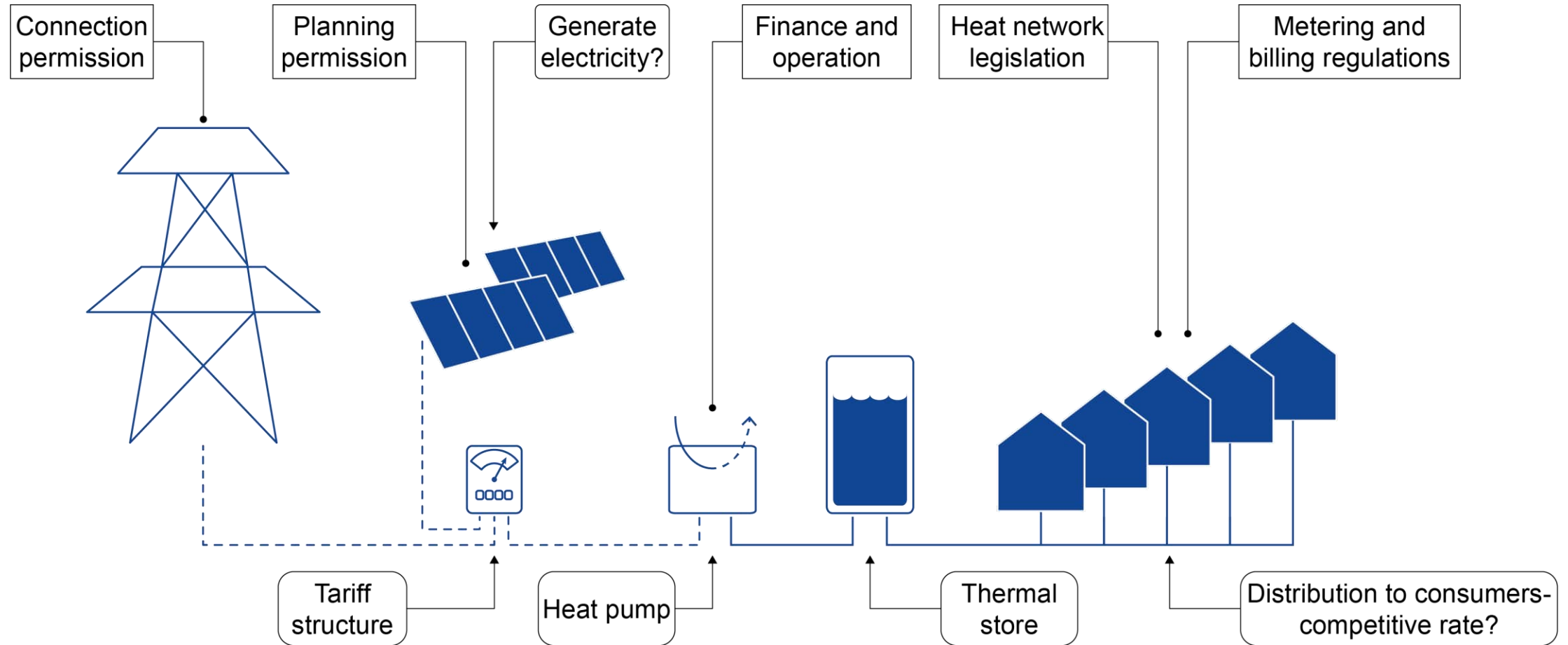
What does a system look like- building integrated PV



What does a system look like- communal generation



What does a system look like- district heating... and a microgrid?



Getting advice

- Impartial online sources e.g. energysavingtrust.org.uk
- Funders and public funding agencies
- Suppliers
- Installers
- Engineering consultants



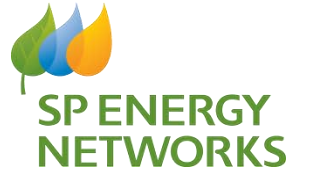
Ynni
Cymunedol Cymru
Community Energy
Wales

Community Energy England/Wales Support



Ynni
Cymunedol Cymru
Community Energy
Wales

Community Energy England



Sign up for newsletter: [The Voice of the Community Energy Sector | Community Energy England](#)

Become a member: [Community Membership | Community Energy England](#)

Events: [Community Energy England Events | Community Energy England](#)

Contact us: info@communityenergyengland.org

Cyflwyniad i **Ynni Cymunedol Cymru**

Introduction to **Community Energy Wales**



Amdanom ni: Y Tîm

About us: The Team



Cyd-Gyfarwyddwyr Gweithredol
Co-Executive Directors

Leanne Wood
Ben Ferguson



Swyddog Aelodaeth a Gweinyddol
Membership and Admin Officer
Gwenno Huws



Swyddog Marchnata a Hyrwyddo
Marketing and Promotion Officer
Dyfan Lewis

Cydllynydd Rhwydwaith Addysg Ynni
Energy Learning Network Co-ordinator
Lydia Godden

Swyddog Polisi ac Ymchwil
Research and Policy Officer
Jason Shilcock



Amdanom ni: Sefydliad Aelodaeth

About us: A Membership Organisation

Ein haelodaeth:

Aelodaeth: o gwmpas 75%

Corfforaethol: o gwmpas 20%

Cydweithredol: o gwmpas 5%

Ac ar hyn o bryd 861 o unigolion
drwy fudiad RhanNi

Our members are:

Community: around 75%

Corporate: around 20%

Associate: around 5%

And currently 861 individuals,
through the RhanNi movement.

Ein Huchelgais | Our mission

Ein huchelgais graidd yw i gefnogi a chyflymu'r newid tuag at system ynni deg, carbon isel a arweinir gan y gymuned.

Our core mission is to support and accelerate the transition to a fair, net zero and community led energy system.

Ein gwaith

What we do

1. Arwain drwy esiampl
2. Rhannu gwybodaeth a dealltwriaeth
3. Dylanwadu

1. Leading by example
2. Sharing knowledge and wisdom
3. Influencing



State of the Sector 2023

Just Transition to Net Zero Wales
Community Renewable Energy

Darllenwch ein Hadroddiad ar Gyflwr y Sector:

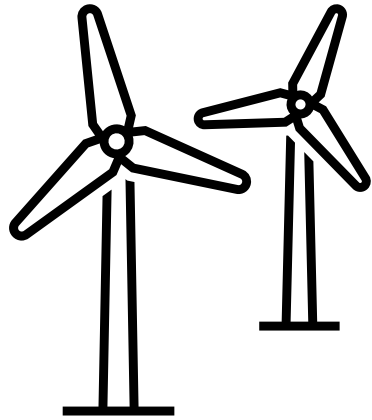
Cymraeg



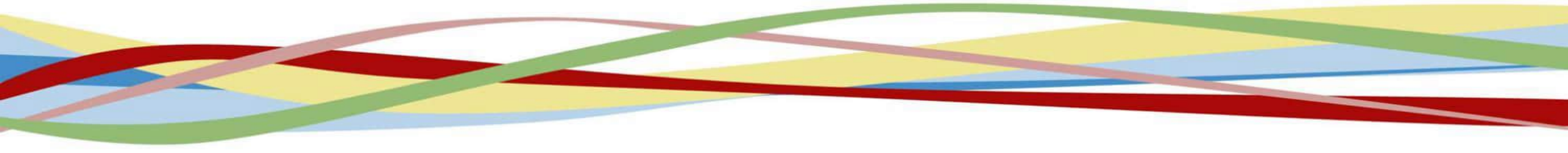
English



Read our State of the Sector Report

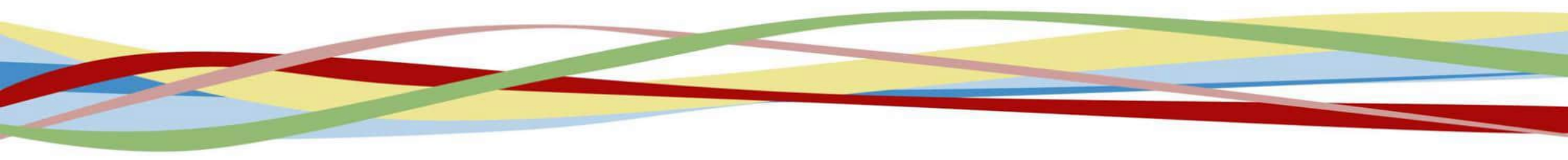


Wind Turbines for Community Groups



Community Energy Scotland

- Promoting and supporting community-led renewable energy projects.
- Empower local communities to develop their own energy initiatives.
- Technical advice, funding support, capacity building, and facilitate knowledge sharing.
- Advocate for policies.
- Enhance community resilience.



Westray Turbine

- Wind resource
- Grid connection
- Finance
- Impact on surroundings
- Maintenance

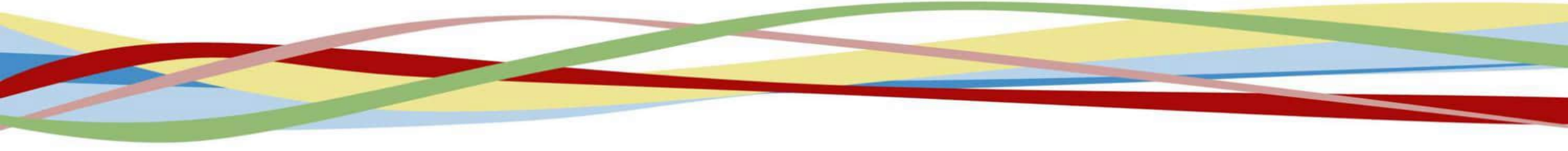
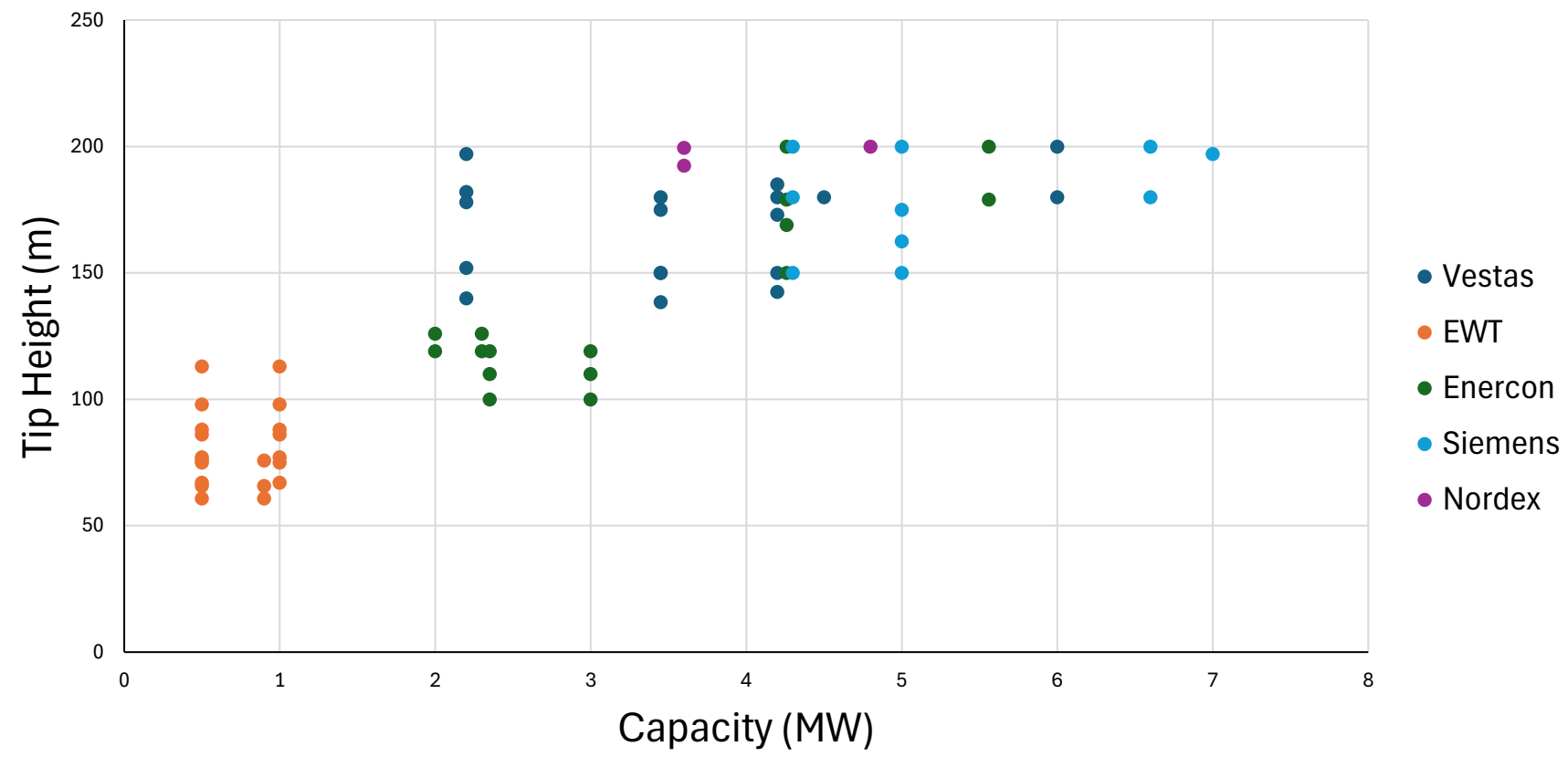


Turbine wind classes

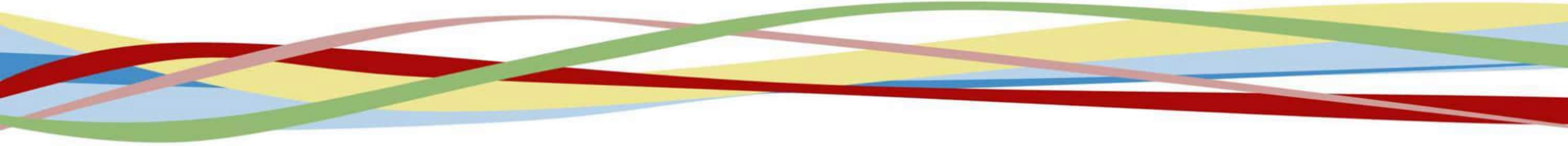
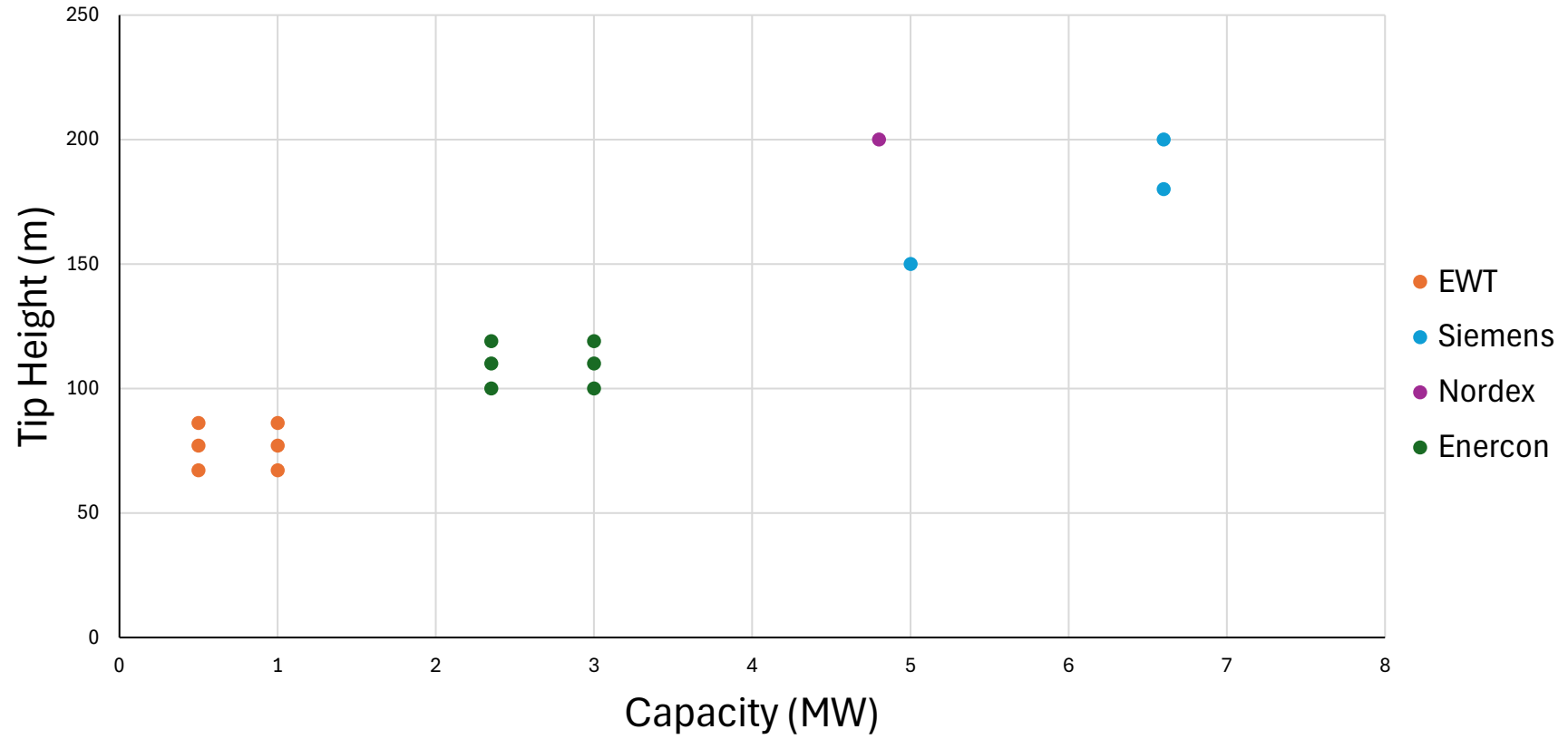
- **Class I** - 10 m/s annual average wind speed at hub height.
 - **Class II** - 8.5 m/s annual average wind speed at hub height.
 - **Class III** - 7.5 m/s annual average wind speed at hub height.
 - **Class IV** - 6 m/s annual average wind speed at hub height.
-
- Mainly class I and II in Scotland.
 - Class I in coastal and higher altitude areas.



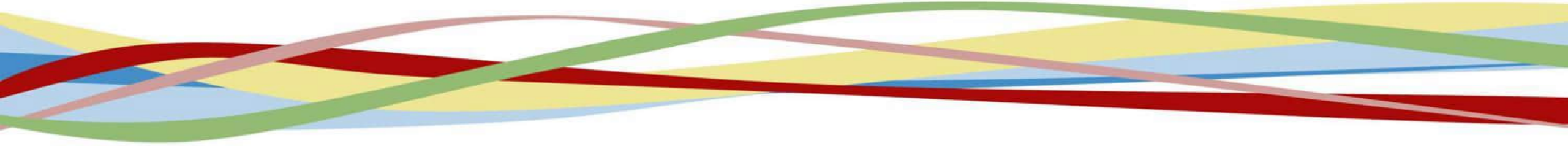
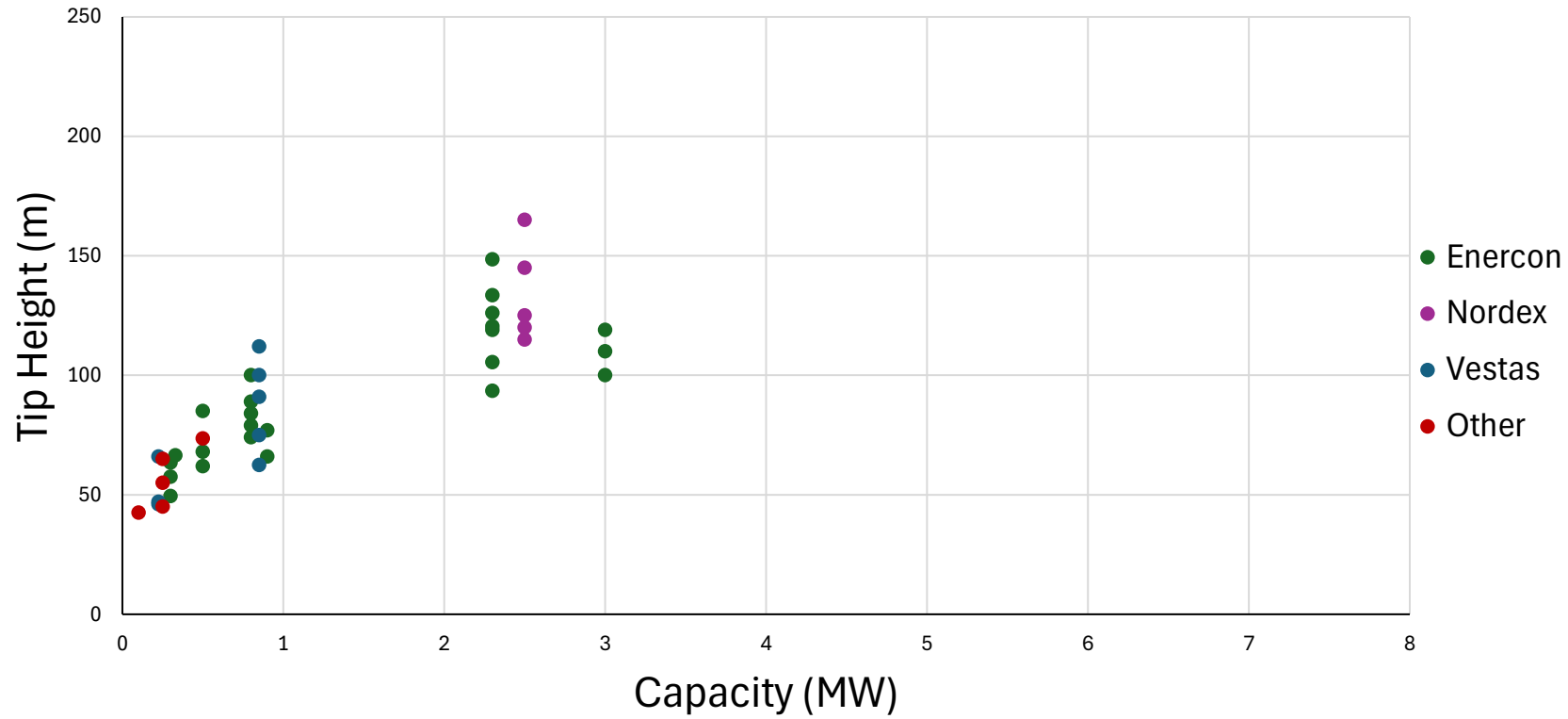
What is available now ?



What is available now ?



What do Scottish communities currently have installed ?



Examples: Isle of Gigha



- Have 3 refurbished Vestas turbines.
- 225kW each.
- Are now in their 20th year of operation on Gigha.
- Now 32 years old.

Examples: Point & Sandwich

- Operational since 2015.
- Largest Community owned wind farm in UK (9MW).
- 3 x 3MW Enercon turbines
- Currently produces.
£900,000 per year for the community.
- Expected to increase to
£2million per year.



Example: Radio City Association



- 2.5 MW Enercon turbine.
- 82m rotor diameter.
- 110m tip height.
- Expected to be complete by January 2025.

Community Energy Case Study:

Edinburgh Solar Co-Op

Edinburgh Community Solar Co-op



- Edinburgh Community Solar Co-op set up in 2013 by people in Edinburgh who thought citizens should take responsibility for their energy needs
- Working in partnership with City of Edinburgh Council since 2015
- Raised £2.1 million over two community share offers in 2016 and 2020
- Nearly all the money raised within Edinburgh

Edinburgh Community Solar Co-op



- Solar pv panels installed on 30 council roofs over two phases
- Citizens of Edinburgh have paid for the solar panels on council roofs
- Solar Co-op supplies electricity to the council below grid price at fixed rates
- Solar Co-op deals with operation and maintenance
- All financial surplus goes to community benefit.

Edinburgh Community Solar Co-op



- Third phase of 16 buildings now agreed with council
- Planning £2.6 million community share offer in early 2025
- Includes Royal Commonwealth Pool and International Climbing Centre (EICC)
- Planning to include four community-owned properties

Edinburgh Community Solar Co-op



Why has Edinburgh seen this success story?

- Co-operative Council
- Strong leadership
- Co-op Values and Principles
- Partnership
- Trust in community
- Energy4All



Walis George

Cyd-Reolwr Datblygu / Development Co-Manager

Ein hanes

Our history

- Sefydlwyd gan Bartneriaeth Ogwen yn 2015
- Cymdeithas Budd Cymunedol
- 300+ o aelodau
- Bwrdd Rheoli o wirfoddolwyr
- Established by Partneriaeth Ogwen in 2015
- Community Benefit Society
- 300+ members
- Volunteer Board of Management









Hydro Afon Ogwen

- Capasiti cynhyrchu 100kW
- Costau datblygu £450,000
- Cynnig cyfranddaliadau cymunedol
- Tariff Cyflenwi Trydan
- Yn gweithredu ers 2017

- Generation capacity 100kW
- Development costs £450,000
- Community share offer
- Feed-In Tariff
- Operating since 2017

Allbynnau

Outputs

- Yn cynhyrchu tua 500MWh o drydan glân y flwyddyn
- Yn arbed tua 185 tonnell o garbon bob blwyddyn
- Produces approx. 500MWh of clean electricity each year
- Saves around 185 tonnes of carbon each year

Buddion Cymunedol

Community Benefits

- Sefydlwyd Elusen Ogwen yn 2020
 - Ynni Ogwen yn cyfrannu'n flynyddol
 - £15,000 yn 2023/24 + 2024/25
 - Gwerth grantiau a roddwyd i grwpiau lleol: £54,249
- Elusen Ogwen Charity established in 2020
 - Ynni Ogwen contributes annually
 - £15,000 in 2023/24 + 2024/25
 - Value of grants awarded to local groups: £54,249



Heuldro 1 (Solstice)

- Rhaglen solar PV
 - Adeiladau cymunedol a busnes
 - Cytundeb Prynu Pwêr gyda deiliaid yr adeilad
 - Contractwyr lleol wedi'u hachredu
 - Chwe safle yn 2020 (21kWp)
- Solar PV programme
 - Community and business buildings
 - Power Purchase Agreement (PPA) with the occupants
 - Accredited local contractors
 - Six sites in 2020 (21kWp)





Heuldro 2

- Grant Adnoddau Ynni Cymunedol (Llywodraeth Cymru)
- Swydd Rheolwr Datblygu (2 flynedd)
- Targed: 600kWp ychwanegol
- Ar doeau ac ar y ddaear
- Community Energy Resources Grant (Welsh Government)
- Development Manager post (2 years)
- Target: additional 600kWp
- Roof-mounted and ground-mounted

@ 30/09/24

- Capasiti: 115kWp
- Wyth safle yn gyfangwbl
- Cyfanswm buddsoddiad £132k
- Pum gosodiad wedi'i gwblhau yn 2024
- Tri estyniad a dau safle newydd
- Chwe safle ar y gweill = 68kWp (amcan)

- Capacity: 115kWp
- Eight sites in total
- Total investment of £132k
- Five installations completed in 2024
- Three extensions and two new sites
- Six sites in progress = 68kWp (estimated)







Ynni cymunedol yn y Gogledd

Community energy in north Wales

- Ynni Anafon - Hydro 270kW (2015)
- Corwen Local Energy - Hydro 55kW (2015) + 100kW (2023)
- Ynni Padarn Peris - Hydro 55kW
- Ynni Newydd - Solar >30MW (Bretton Hall)
- Cynnig cyfranddaliadau diwedd 2024 / Share offer late 2024
- Ynni Hiraethog - Gwynt / Wind >60MW -
- Cyd-berchnogaeth / Shared ownership
- Wedi cwblhau ymgynghoriad cyn cais cynllunio / Pre-application consultation completed

Diolch yn fawr
Thank you



walis.ynni@ogwen.org



07900 262440



Ynni Ogwen Cyf, 26 Stryd Fawr, Bethesda,
Gwynedd, LL57 3AE



BREAK

Breakout Sessions

- [Cara Babineau](#) – Senior Low Carbon Communities Officer: Changeworks
- [Graham Ayling](#) – Community & Renewable Energy Programme Manager: EST
- [Louise Taylor/ Liam Cantwell](#) – Community Energy Engagement Manager: SP Energy Networks



Community Energy Workshop: Technology Webinar

Question and Answer Session

Closing Remarks