



# Cloich Forest Wind Farm Connection Project

## Consultation Feedback Report

# Contents

|   |          |   |            |
|---|----------|---|------------|
| <b>Chapter 1</b>                                |          | <b>Chapter 4</b>  |            |
| <b>Introduction</b>                             | <b>2</b> | <b>Conclusion and Next Steps</b>                            | <b>10</b>  |
| Need for the Project                            | 2        |   |            |
| SP Energy Networks                              | 3        | <b>Appendix A</b>   |            |
|   |          | <b>Stakeholder Consultee List</b>                           | <b>A-1</b> |
|   |          | Consultee List  | A-1        |
| <b>Chapter 2</b>                                |          | <b>Appendix B</b>   |            |
| <b>Approach to Pre-Application Consultation</b> | <b>4</b> | <b>Newspaper Adverts</b>                                    | <b>B-1</b> |
| Legislation and Guidance                        | 4        |   |            |
| SPEN's Commitment to Engagement                 | 4        | <b>Appendix C</b>   |            |
| Consultation Strategy                           | 5        | <b>Consultation Leaflet</b>                                 | <b>C-1</b> |
|   |          |   |            |
| <b>Chapter 3</b>                                |          | <b>Appendix D</b>   |            |
| <b>Consultation Process</b>                     | <b>6</b> | <b>Presentation Banner</b>                                  | <b>D-1</b> |
| Overview  | 6        |   |            |
| Consultees                                      | 6        | <b>Appendix E</b>   |            |
| Public Consultation Events                      | 7        | <b>Summary of Consultation Feedback from Routeing Stage</b> | <b>E-1</b> |
| Advertisement                                   | 7        |   |            |
| Event Attendance                                | 8        |   |            |
| Consultation Comments Forms                     | 8        |   |            |
| Stakeholder Responses                           | 9        |   |            |
| Consideration of Feedback                       | 9        |   |            |

# Chapter 1

## Introduction

**1.1** This consultation feedback report has been prepared by LUC on behalf of SP Energy Networks (SPEN), to present the findings of the first stage of pre-application consultation on the Cloich Forest Wind Farm Connection Project (hereafter referred to as the Proposed Development).

**1.2** A pre-application consultation was held between 13<sup>th</sup> May to 17<sup>th</sup> June 2024, whereby statutory and non-statutory consultees were approached, and in-person events held on the 28<sup>th</sup> May, 29<sup>th</sup> May and 3<sup>rd</sup> June 2024 to obtain feedback from members of the public.

**1.3** These events followed the publication of the Routeing and Consultation Report (RCR) (10<sup>th</sup> May 2024)<sup>1</sup> which identified a preferred route for the Proposed Development as seen in **Figure 1.1**.

**1.4** The purpose of this report is:

- to provide details relating to the approach to the first round of consultation;
- to summarise the feedback received to date on the content of the RCR, including on the preferred route,
- to demonstrate how this feedback has influenced the Proposed Development.

**1.5** This document should be read in conjunction with the RCR, for completeness. The RCR comprises a comparative appraisal table, alongside figures which illustrate the location of the preferred route option, routeing considerations, and the alternative route options considered.

### Need for the Project

**1.6** There is ongoing substantial interest for renewable energy generation development to meet national net zero targets.

**1.7** SPEN is required in terms of its statutory and licence obligations to provide for new electricity generators wishing to connect to the transmission system in its licence area. SPEN is also obliged to make its transmission system available for these purposes and to ensure that the system is fit for purpose

---

<sup>1</sup> Cloich Forest Wind Farm Connection Project Routeing and Consultation Document 2024. Available [online] at:

[https://www.spenergynetworks.co.uk/userfiles/file/Cloich\\_WFC\\_Routeing\\_Consultation\\_Document.pdf](https://www.spenergynetworks.co.uk/userfiles/file/Cloich_WFC_Routeing_Consultation_Document.pdf)

through appropriate reinforcements to accommodate the contracted capacity.

**1.8** SPEN received an application from the developer of Cloch Forest Wind Farm, requiring a 67.2 megawatt (MW) connection from the proposed wind farm substation to the existing Currie substation, via a 132kV OHL.

## SP Energy Networks

**1.9** SPEN owns and operates the electricity transmission and distribution networks in central and southern Scotland through its wholly owned subsidiaries SP Transmission plc (SPT) and SP Distribution plc (SPD). SPEN's transmission network is the backbone of the electricity system within its area, carrying large amounts of electricity at high voltages from generating sources such as wind farms, power stations and various other utilities across long distances to connected homes and businesses. The transmission network consists of approximately 4,000km of overhead lines and over 600km of underground cables. The electricity is then delivered via the distribution network which has over 150 substations and in excess of 100 grid supply points which serves approximately two million customers in Southern and Central Scotland.

**1.10** As a transmission license holder for central and southern Scotland, SPEN is required under Section 9(2) of the Electricity Act 1989 to:

- Develop and maintain an efficient, co-ordinated and economical system of electricity transmission; and
- Facilitate competition in the supply and generation of electricity.

**1.11** Section 38 and Schedule 9 of the Act impose a further statutory duty on SPEN to take account of the following factors in formulating proposals for the installation of overhead transmission lines:

- *"(a) to have regard to the desirability of preserving natural beauty, of conserving flora, fauna and geological or physiographical features of special interest and of protecting sites, buildings and objects of architectural, historic or archaeological interest; and*
- *(b) to do what it reasonably can to mitigate any effect which the proposals would have on the natural beauty of the countryside or any such flora, fauna, features, sites, buildings or objects."*

**1.12** As a result of the above, SPEN is required to identify electrical connections that meet the technical requirements of the electricity system, which are economically viable, and

cause on balance, the least disturbance to both the environment and the people who live, work and enjoy recreation within it.

## Chapter 2

# Approach to Pre-Application Consultation

### Legislation and Guidance

**2.1** SPEN will be applying to the Scottish Ministers for Section 37 Consent under the Electricity Act 1989 to install the Proposed Development. SPEN will also apply for deemed planning permission for the line and associated works under Section 57(2) of the Town and Country Planning (Scotland) Act 1997.

**2.2** Whilst there are no formal pre-application requirements for consultation when seeking section 37 consent (with deemed planning permission), SPEN is embracing best practice as outlined in the Scottish Government Energy Consents Unit's (ECU)'s Best Practice Guidance (July 2022). This guidance encourages applicants to engage with stakeholders and the public in order to develop their proposal in advance of such applications being made. For the purpose of this report, consenting/statutory bodies are referred to as statutory consultees for ease of reference/common use of terminology, even though there is no statutory requirement for them to be consulted through this process.

### SPEN's Commitment to Engagement

**2.3** Stakeholder engagement, including public involvement, is an important component of the Scottish planning and consenting system. SPEN attaches great importance to the effect that its works may have on the environment and on local communities. SPEN recognises the importance of consulting effectively on proposals and of being transparent about the decisions reached. SPEN is keen to engage with key stakeholders including local communities and others who may have an interest in the Cloich Forest Wind Farm Connection Project. This engagement process begins at the early stages of development of a project and continues into construction once consent has been granted.

**2.4** SPEN's approach to stakeholder engagement for major electrical infrastructure projects is outlined in Chapter 2 of the SPEN document 'Approach to Routeing and Environmental Impact Assessment'<sup>2</sup>. SPEN aims to ensure effective, inclusive and meaningful engagement with the public, local

---

<sup>2</sup> SPEN Approach to Routeing and Environmental Impact Assessment 2020. Available [online] at:

[https://www.spenergynetworks.co.uk/userfiles/file/SPEN\\_Approach\\_to\\_Routeing\\_Document\\_2nd\\_version.pdf](https://www.spenergynetworks.co.uk/userfiles/file/SPEN_Approach_to_Routeing_Document_2nd_version.pdf)

communities, statutory bodies and other consultees and interested parties through four key engagement steps:

- Pre-project notification and engagement with consenting/statutory bodies and planning authorities;
- Information gathering;
- Obtaining feedback on the emerging route options and / or preferred route; and
- The Environmental Appraisal/Environmental Impact Assessment (EIA) stage.

## Consultation Strategy

**2.5** The overall objective of the consultation process is to ensure that all parties interested in the Proposed Development have continued access to updated information and were given clear and easy ways in which to shape and inform SPEN's proposal at the pre-application stage.

**2.6** Key issues identified during this process have been recorded and will be presented to decision makers to assist with the consents process.

**2.7** Two rounds of public consultation events will be undertaken in total for the public, stakeholders and consultees to provide comments on the proposals. One round of public consultation events took place between the 28<sup>th</sup> May 2024 and the 3<sup>rd</sup> June 2024. Further details of the first consultation process are presented in **Chapter 3: Public Consultation Process** of this report.

# Chapter 3

## Consultation Process

### Overview

**3.1** The consultation period ran from Monday 13<sup>th</sup> May to Monday 17<sup>th</sup> June 2024.

**3.2** The project website<sup>3</sup> went live on the 13<sup>th</sup> May 2024, which included publicly available consultation documents and a virtual consultation room to view and download project information.

**3.3** Feedback was accepted via the feedback forms made available at the public consultation events; through the online feedback form; and otherwise through written correspondence either posted in writing and / or by email to the project email [cloichprojectmanager@spenergynetworks.co.uk](mailto:cloichprojectmanager@spenergynetworks.co.uk).

**3.4** The closing date for sending responses to SPEN was midnight on Monday 17<sup>th</sup> June 2024. Whilst the virtual consultation room was de-activated on the 18<sup>th</sup> June 2024, the information relating to the RCR, and associated advertisements and consultation material from the events, have remained accessible online and available to download on the project website at:

<https://www.spenergynetworks.co.uk/pages/cloich.aspx>

### Consultees

**3.5** This section describes the various groups of stakeholders and consultees relevant to the Proposed Development that SPEN consulted during this first phase of pre-application consultation. Local communities and stakeholders were identified on the basis of the preferred route which is presented in the RCR. SPEN consulted with relevant stakeholders including; statutory and non-statutory consultees, community councils, ward councillors, elected members of the four councils, Members of Parliament and Scottish Parliament, and local residents, businesses and the general public.

**3.6** As part of the consultation process, LUC, on behalf of SPEN, approached the following statutory bodies through email correspondence, seeking feedback in relation to the preferred route:

- City of Edinburgh Council;

---

<sup>3</sup> <https://www.spenergynetworks.co.uk/pages/cloich.aspx>

- West Lothian Council;
- Scottish Borders Council;
- South Lanarkshire Council;
- Scottish Environment Protection Agency (SEPA) (south);
- NatureScot; and
- Historic Environment Scotland (HES).

**3.7** Transport Scotland, Scottish Forestry and the Coal Authority were also approached as key internal Scottish government advisory bodies.

**3.8** Furthermore, MPs, MSPs, Ward Councillors and Community Councils were approached.

**3.9** The full list of stakeholders consulted can be found in **Appendix A**.

**3.10** Landowners within the preferred route corridor were contacted directly by SPEN's land project officer separately for their feedback on the proposals. SPEN is actively engaging with relevant landowners and discussions will be ongoing through the detailed alignment stage.

**3.11** All route options were presented at the consultation events and within the RCR. Consultees were asked for their views on:

- The preferred route (**1A-1B-1D-1F**) as shown in **Figure 1.1**; and
- Any other issues, suggestions or feedback; particularly knowledge of the local area, for example areas used for recreation, local environmental features, and any plans to build along the preferred route.

## Public Consultation Events

### In-person events

**3.12** The public consultation events were held on **28<sup>th</sup> May, 29<sup>th</sup> May** and **3<sup>rd</sup> June 2024**:

- **28<sup>th</sup> May 2024** between 11:30am – 6pm at St Andrew's Old Church Hall, Main Street, West Linton, EH46 7EE;
- **29<sup>th</sup> May 2024** between 1pm – 6pm at Tarbrax Village Hall, Crosswood Terrace, Tarbrax, West Calder, EH55 8XE; and
- **Mon 3<sup>rd</sup> June 2024** between 1pm – 7pm at Balerno Community Centre, 7 – 11 Main Street, Balerno, Edinburgh, EH14 7EQ.

**3.13** A mis-communication prior to the event meant the event held at St Andrew's Old Church Hall was incorrectly signposted in the advertisements and leaflets as 'St Andrew's New Church Hall'.

**3.14** This error was remedied through the display of a number of signs erected on the day to re-direct visitors to the St Andrew's Old Church Hall.

## Advertisement

### Newspaper Adverts

**3.15** Prior to the public consultation events, details of the events were advertised in the following newspapers, published on the following days:

- C&B news (Currie and Balerno News) – 26<sup>th</sup> April and 31<sup>st</sup> May 2024 publications
- Evening Edinburgh News – Tuesday 14<sup>th</sup> May 2024
- Borders Telegraph – Wednesday 15<sup>th</sup> May 2024
- Peeblesshire News – Friday 10<sup>th</sup> May 2024

**3.16** All newspaper adverts were published approximately two weeks before the first in-person consultation event, detailing the project proposals, relevant dates and locations for the consultation. The adverts also confirmed that comments received at this stage are to SP Energy Networks to inform the routeing process, with the opportunity to comment formally to the ECU available once an application has been submitted to them.

**3.17** A copy of all the advertisements, publicised in the Currie and Balerno local newspaper, Evening Edinburgh News, Borders Telegraph, and Peeblesshire News, are provided in **Appendix B**.

### Leaflet

**3.18** Consultation leaflets were distributed via a third party company to local properties located within 1km of the preferred route option, between the 5<sup>th</sup> to the 10<sup>th</sup> May. Leaflets were also distributed to the residents of Balerno and West Linton, as additional properties beyond the 1km boundary for completeness, in advance of when the website went live on Monday 13<sup>th</sup> May 2024.

**3.19** The consultation leaflet invited members of the public to attend the in-person events and provided details about how to access more information online via the project website and make comments. A copy of the consultation leaflet distributed is contained in **Appendix C**.

### Posters

**3.20** Posters were also made available to the following venues, either by email or by post, subject to confirmation on the phone or via written correspondence as to whether a virtual or physical copy was preferred:

- Balerno Community Centre



- Balerno Library
- Balerno Fry Fish and Chips
- Currie Library
- Tarbrax Village Hall
- West Calder Library
- West Linton Post Office
- Newlands Activity Centre
- St Andrews New Church Hall

**3.21** Where virtual copies were requested, the venues had confirmed they were happy to print and put up the posters. It should be noted that whilst posters were made available, it is down to the discretion of each venue to keep the posters up, or put them up in the first place as agreed.

### Consultation Event Material

**3.22** The consultation event material consisted of 12 presentation banners which contained information relating to

- SPEN;
- the need for the project;
- the proposals, including what an overhead line would look like;
- the climate emergency;
- the routeing considerations and methodology adopted, including the study area and the environmental considerations assessed;
- the preferred route;
- details of how to provide comments and deadlines for doing so; and
- details of the next steps for the project, including EIA.

**3.23** On the days of the events, printed copies of the RCR were available to view, alongside printed versions of the preferred route which were displayed to allow ease of review.

**3.24** A copy of the RCR was left at each respective event venue, following the event for two weeks, so that it could be accessed at leisure by members of the public.

**3.25** Printed versions of the comments forms and consultation leaflet were also available for attendees to take home. Pre-paid envelopes were also provided so that attendees could take the comments form home and post them to the project address before the deadline.

**3.26** Copies of the presentation banners are contained in **Appendix D**.

## Event Attendance

**3.27** At each of the consultation events, attendees were provided with the optional opportunity to sign in and provide their names and email address. Attendance was also counted by one of the team members.

**3.28** With consideration to General Data Protection Regulations (GDPR), SPEN has kept the details of the attendees confidential.

**3.29** On 28<sup>th</sup> May 2024, 36 people attended the event, and attendance was steady throughout the day, with approximately six people attending per hour.

**3.30** On 29<sup>th</sup> May 2024, over the course of the day nine people attended the event.

**3.31** On the 3<sup>rd</sup> June 2024, 33 people attended the event. The most popular times for attendance were between 1pm-4pm whereby 20 people attended. The remaining attendees were split almost evenly between the remaining consultation hours.

**3.32** The event was attended by team members from SPEN and LUC.

## Consultation Comments Forms

**3.33** Comments forms were available on the day of exhibition for attendees to fill out their responses / feedback. Comments were also accepted in writing and by email until **midnight on Monday 17<sup>th</sup> June 2024** via:

- Cloich Forest Wind Farm Connection Project  
Land and Planning Team  
SP Energy Networks  
55 Fullarton Drive  
Glasgow  
G32 8FA
- [Cloichprojectmanager@spenergynetworks.co.uk](mailto:Clochprojectmanager@spenergynetworks.co.uk)

**3.34** Attendees were encouraged to provide written feedback/ comments to SPEN via the communication methods detailed.

**3.35** No attendees left written feedback at either of the first two consultation events.

**3.36** Handwritten feedback was provided at the third consultation event, and this was typewritten and summarised in the comments below.

**3.37** Verbal comments and questions raised were informally noted by SPEN and LUC on the day.

**3.38** A total of 11 people submitted comments / feedback through a feedback form in writing and 50 people provided comments / feedback via email or the online feedback form.

## Stakeholder Responses

**3.39** Emails were sent to the consultees noted in paragraph 3.10 on 13<sup>th</sup> May 2024 providing links to the RCR and accompanying appraisal table and figures. Comments were sought on the preferred route; seeking specific advice from the consultees in relation to any detailed constraints within the preferred route option, and feedback in relation to any potential mitigation that may be required if the preferred route was to be progressed.

**3.40** Comments were received from the following statutory/non-statutory consultees during the pre-application consultation:

- West Lothian Council;
- SEPA;
- HES; and
- Scottish Forestry.

**3.41** Summaries of these consultation responses and any actions to be taken through the detailed design are noted in **Appendix E: Summary of Pre-Application Consultation Feedback from the Routeing Stage**.

## Consideration of Feedback

**3.42** SPEN will continue to liaise with landowners to ensure that their views are taken into account in the design process as the project progresses.

**3.43** Consultation responses received and the responses made by SPEN (including any actions required through the design process) are outlined in **Appendix E**.

**3.44** Responses in **Appendix E** are set out initially by statutory and non-statutory consultees, then the public comments have been grouped for ease of reference.

**3.45** Public comments have been summarised and anonymised as best possible to ensure compliance with SPEN and LUC's data protection policies.

**3.46** Where specific group responses have been received from locally important stakeholders (notably from The Friends of the Pentlands and the West Linton Community Development Trust), these have been reported together. All other public responses have been summarised per issue raised. Where comments were provided on a specific area / landholding, these have been grouped under 'residential and land use'.

**3.47** Consultees and attendees were informed that comments received at the consultation phase were comments to SPEN to allow any informed changes to the preferred route where necessary. Opportunities to provide formal comments to the

Scottish Government Energy Consents Unit, who will be the decision makers on the Section 37 application will follow at a later stage.

## Chapter 4

### Conclusion and Next Steps

- 4.1** SPEN continues to review and consider in detail all feedback received to date from the public, consultees and landowners in relation to the pre-application consultation for the Proposed Development.
- 4.2** The feedback will inform SPEN's review of the Proposed Development with a view to confirming the proposed route to be taken forward to the detailed pole design stage.
- 4.3** The proposed route option (when confirmed) will be progressed to identify alignment for the 132kV OHL, including pole positioning, which will be informed by environmental baseline surveys, detailed engineering ground surveys and further discussions with landowners. Information collated from feedback received as part of the pre-application consultation relating to locally important areas and features will be reflected in the design of the alignment alongside the field surveys where relevant.
- 4.4** The Proposed Development will require consent under Section 37 of the Act as well as deemed planning permission. The application will be accompanied by an Environmental Impact Assessment (EIA) Report on the basis that the Proposed Development is being considered as 'EIA Development'.
- 4.5** A Scoping Report based on the proposed route will be submitted to the Scottish Government ECU to request a formal Environmental Impact Assessment (EIA) Scoping Opinion from the Scottish Ministers in accordance with Regulation 8 (1) of The Electricity Works (Environmental Impact Assessment) (Scotland) Regulations 2017. This will inform the scope of the EIA Report.
- 4.6** A further round of consultation will be undertaken to present the detailed alignment for the proposed route and similar consultation steps as described in the previous chapters will be undertaken to notify consultees of the next round of events.
- 4.7** Following the second round of consultation events, the alignment, including all ancillary development, will be included in the application for Section 37 consent and deemed planning permission to the Scottish Government ECU. Following the submission of the application for Section 37 and deemed planning permission, further public consultation will be carried out by the Scottish Government ECU.

# Appendix A

## Stakeholder Consultee List

### Consultee List

#### Statutory Consultees

- City of Edinburgh Council
- West Lothian Council
- Scottish Borders Council
- South Lanarkshire Council
- Scottish Environment Protection Agency (SEPA)
- NatureScot
- Historic Environment Scotland (HES)

#### Internal Scottish Government Advisors

- Transport Scotland
- Scottish Forestry
- The Coal Authority

#### Community Councils

- Currie
- Balerno
- Ratho and District
- East Calder and District
- Kirknewton
- West Calder and Harburn
- Tarbrax, Woolfords, Auchengray and District
- Black Mount
- West Linton
- Lamancha, Newlands and Kirkurd
- Eddleston and District

#### Non-Statutory Consultees

- British Horse Society
- Telecommunications (Virgin, BT, etc.)
- Civil Aviation Authority

**Appendix A**  
Stakeholder Consultee List

Cloich Forest Wind Farm Connection Project  
December 2024

- Crown Estate Scotland
- Defence Infrastructure Organisation
- Edinburgh Airport
- Fisheries Management
- Friends of the Pentlands
- John Muir Trust
- Kirknewton Airport
- Ministry of Defence (MoD)
- Mountaineering Scotland
- NATS Safeguarding
- National Farmers Union of Scotland
- Network Rail
- Pentland Hills Regional Park Joint Committee
- Raptors
- RAF Kirknewton
- RSPB Scotland
- Scottish Rights of Way and Access Society (ScotWays)
- Scottish Water
- Scottish Wildlife Trust
- Scottish Badgers
- South Scotland Red Squirrel Group
- Scottish Outdoor Access Network
- Sports Scotland
- Sustrans Scotland
- The British Association of Shooting and Conservation (BASC) Scotland
- The Health and Safety Executive
- The National Trust for Scotland
- The Ramblers Association
- The Water of Leith Conservation Trust
- Visit Scotland

**Community Councils**

- City of Edinburgh
  - Currie
  - Balerno
  - Ratho and District

- West Lothian
  - East Calder and District
  - Kirknewton
  - West Calder and Harburn
- South Lanarkshire
  - Tarbrax, Woolfords, Auchengray, and District
  - Black Mount
- Scottish Borders
  - West Lothian
  - Lamancha, Newlands and Kirkurd
  - Eddleston and District

**Ward Councillors for:**

- Pentland Hills
- East Livingston and East Calder
- Clydesdale East
- Tweeddale West

**MPs for:**

- Edinburgh South West
- Livingston
- Dumfriesshire, Clydesdale and Tweeddale
- Midlothian

**MSPs for:**

- Edinburgh Pentlands
- Almond Valley
- Clydesdale
- Midlothian South, Tweeddale and Lauderdale

# Appendix B

## Newspaper Adverts

### B.1 Currie and Balerno News – May 2024

**Cloch Forest Wind Farm Connection Project**



**We'd like your views!**

Scotland is a world leader in the fight against climate change.

Our country has a target of Net Zero carbon emissions by 2045, with the UK aiming for Net Zero by 2050.

To help meet those targets, SP Energy Networks needs to strengthen Scotland's electricity transmission and distribution network so we can transport increasing amounts of clean, green energy from where it's produced to where it's needed.

Our transmission work includes the provision of a new 132kV wood pole overhead line connecting the proposed Cloich Forest Wind Farm substation to the grid at Currie substation.

We have identified a preferred route for the proposed new overhead line, and we would like to hear local people's views to help us develop our plans.

We are holding three public exhibitions where you can view our plans and talk to the project team. Information relating to the proposed overhead line, including a virtual consultation room, will also be made available online from the **13th May 2024** at:

[www.spenergynetworks.co.uk/pages/cloch.aspx](http://www.spenergynetworks.co.uk/pages/cloch.aspx)

You can leave comments on the website, and you can also contact us in the following ways:

**Email:** [Clochprojectmanager@spenergynetworks.co.uk](mailto:Clochprojectmanager@spenergynetworks.co.uk)

**Post:** Cloich Project Manager, SP Energy Networks, Land and Planning, 55 Fullarton Drive, Glasgow, G32 8FA

At this stage, your comments are not representations to the planning authority. If we do make an application for development consent in future, you will be able to make formal representations to the planning authority at that stage.

**Public exhibitions**

| Date                          | Location   |
|-------------------------------|--|
| 28th May 2024, 11:30am to 6pm | St Andrew's New Church Hall, Main Street, <b>West Linton</b> , EH46 7EE            |
| 29th May 2024, 1pm to 6pm     | Tarbrax Village Hall, Crosswood Terrace, Tarbrax, <b>West Calder</b> , EH55 8XE    |
| 3rd June 2024, 1pm to 7pm     | Balerno Community Centre, 7 - 11 Main Street, <b>Balerno</b> , Edinburgh, EH14 7EQ |

**Podiatrist Service** **LVL Lash Lift & Tint**

**Let's face it**  
AESTHETICS & BEAUTY

DERMAL FILLER  
ANTI WRINKLE TREATMENT  
SKIN BOOSTERS  
FACIALS  
CHEMICAL PEELS  
MICRO NEEDLING  
B12 INJECTIONS  
FACIAL CONTOURING  
FAT DISSOLVING

loraine.henderson@icloud.com  
07590 383 276

Cocklaw Farm Cottage  
Long Dalmahoy Road  
Currie  
EH14 4AD

**Financial advice to suit you**

We provide expert financial advice that delivers personalised financial solutions to meet our clients' individual needs.

We can help in the following areas:

- Retirement planning
- Income in retirement
- Investments and savings
- Protection for your family
- Estate planning

We tailor our advice to each client by taking the time to really understand what's important to them.

We are financial advisers from Invest Retire Protect and we offer a restricted advice service. If you don't already have an adviser and would like some help with your financial planning needs, please get in touch.

**Phone: 0131 259 2162**

**Visit: [www.investretireprotect.com](http://www.investretireprotect.com)**

**Write to: 18 Bridge Road, Colinton, Edinburgh EH13 0LQ**



Invest Retire Protect is an appointed representative of M&G Wealth Advice Limited. M&G Wealth Advice Limited is authorised and regulated by the Financial Conduct Authority. M&G Wealth Advice Limited is registered in England and Wales. Registered office at 10 Fenchurch Avenue, London EC3M 5AG. Registered number 5739054. PFPB1041904\_Invest Retire Protect 93x135 02/2024

**Ogilvie Hayes Tree & Garden Services**

Site: 07521-514-370 Office: 0800-316-8271  
Website: [www.ogilviehayes.com](http://www.ogilviehayes.com) Email: [ogilviehayes@outlook.com](mailto:ogilviehayes@outlook.com)

**Safety is our first priority and we are proud of our customer satisfaction**



**We are happy to come and quote jobs for FREE and give advice on tree and garden work**

We carry out all aspects of tree work from dangerous removals to light fruit pruning and hedge trimming. We have all first class equipment provided for the job and all of our staff are fully qualified through City and Guilds NPTC arboricultural courses.



**Fully fitted from only £980 inc VAT**

**If you thought all front doors were the same. Think again!**

**Four Seasons Classic Composite Doors**

High performance with a huge choice of styles and options  
Secured by Design | Triple glazed | Superb energy efficiency

Call **0131 449 7000** or visit our **brand new door showroom**  
Riccarton Garden Centre  
Riccarton Mains Road, Currie  
Open 7 Days. Mon-Fri 10-4, Sat-Sun 11-4  
[fourseasonsscotland.com](http://fourseasonsscotland.com)

**four seasons Design & Build**

**2016 HOME IMPROVEMENT AWARDS FINALIST**  
best window & door company

**Your local door company** - windows - doors - conservatories - conservatory upgrades - sunrooms - orangeries - extensions

**Charles A. Strachan**  
Electrical Contractor  
Domestic, Commercial & Industrial Installations

Tel/Fax 0131 449 2721  
Mobile. 07710547107

e-mail: [charles.strachan@blueyonder.co.uk](mailto:charles.strachan@blueyonder.co.uk)  
Registered Member of

**SELECT**

**GERRY AITKEN**  
Painter and Decorator

27 years of experience  
Private & commercial work  
Prompt & professional  
Free estimates & advice  
All work guaranteed  
No job is too big or small

**Tel: 07798 565 321**  
e-mail: [junigig@aol.com](mailto:junigig@aol.com)  
2/7 Lorimer View,  
Juniper Green

**COLLINS DECORATORS**  
INTERIOR/EXTERIOR  
**"QUALITY ASSURED"**

**FOR EXPERT ADVICE ON ALL PAINTING & DECORATING, CALL FOR A FREE ESTIMATE AND PROMPT ATTENTION.**

**ALL TYPES OF INSURANCE AND CONTRACT WORK UNDERTAKEN**

**TEL: 0131 539 5705**  
**MOB: 07788 963952**  
[collins\\_decorators@outlook.com](mailto:collins_decorators@outlook.com)

**Why not advertise with the C&B News?**

**Display ads still from only £22 per month**

**Larger ad sizes now available**

**[advertising@candbnews.com](mailto:advertising@candbnews.com)**

**DECOR INTERIORS** **Mob.07789202299**

Brian jamieson  
Painter & decorator

[Brian.jamieson4@virginmedia.com](mailto:Brian.jamieson4@virginmedia.com) **Tel.fax.01506 200503**  
Wall covering, coving, amestaping etc **Free estimates**

**Appendix B**  
Newspaper Adverts

Cloich Forest Wind Farm Connection Project  
December 2024

**B.2 Currie and Balerno News – June 2024**



# Cooking the Books

**S**umer is icumen in. Don't worry, I've not forgotten how to spell. That's the name of a 13th century song in Medieval English. Quite literally, it means "summer is coming". It is considered by musicologists to be the first pop song and features a chorus of cuckoo noises. During my undergraduate degree in music we had such larks singing this song. Ah, those were the days.

The coming of summer brings long evenings sitting in your garden/balcony/a park in the (hopefully) warm weather with friends over a glass of something nice. If you are anything like me, there will also be food. Wondering what to cook for people who are guests in my home is something I take a lot of pleasure in. What sort of menu? What will work? Would that dessert be too heavy after this main? Most crucially, the question revolves around: how will I get it all done while also working, doing chores and looking after the kids?

Enter *Nothing Fancy* by Alison Roman. I heard about this book from a favourite podcast of mine called *Table Manners, The Podcast*. In it singer Jessie Ware and her mother, Lennie, cook food for celebs and they enjoy it over chat. Months ago they used Alison Roman's book about easy entertaining for a meal they cooked for none other than *Girls Aloud*. I bought it on the spot. Not necessarily because of *Girls Aloud*, but because I liked the sound of everything they were making.

Previous readers will know my favourite type of cooking is fairly simple, with not too much process, but which packs a punch. So far, my exploration with *Nothing Fancy* has proved to be right up my street. We had guests over recently so I did Roman's slow-roasted chicken with jammy tomatoes. I was sceptical about slow-cooking a chicken, I've always feared it would go dry. And yes, you



do have to keep a bit of an eye on it (having a meat thermometer works wonders here because you can know exactly when it's cooked through), but I've since cooked it thrice and had nothing but success. The tomatoes and garlic that you roast with the chicken in the oven go so rich and sumptuous you could just have them on a slice of bread any day of the week. The skin on the chicken goes crisp and gorgeous with its fennel seed crust that you sprinkle on before popping into the oven.

This book is all about easy entertaining. There are salads galore, ideas for a baked potato bar, thoughts on barbecues and generally fab musings on having people round and giving them great food.

With my chicken I served a gem lettuce, pistachio, lemon and herb salad (yum), black lentils with labneh (strained Greek yoghurt - so easy to make) topped with confit garlic and onions (extra yum), and wine roasted artichokes (the most unbelievably yum). For dessert I served fruit on ice. Yep. That's it. I've never been a fan of fruit salad but chop up watermelon, pineapple, guava and other big chunks of fruit and serve it in a huge bowl filled with ice? It becomes the most fun pudding ever. Everyone helps themselves and you can serve it with cream or ice cream if you so wish. And it's really refreshing to boot.

All of it was stress-free so I could just sit back and enjoy my visitors' company. *Sumer is icumen in*, and with it comes guests and good grub. It may be *Nothing Fancy* but it can always be something wonderful.



with Balerno Resident STEF LYONS

EMMA MORE  
SCOTTISH POWER

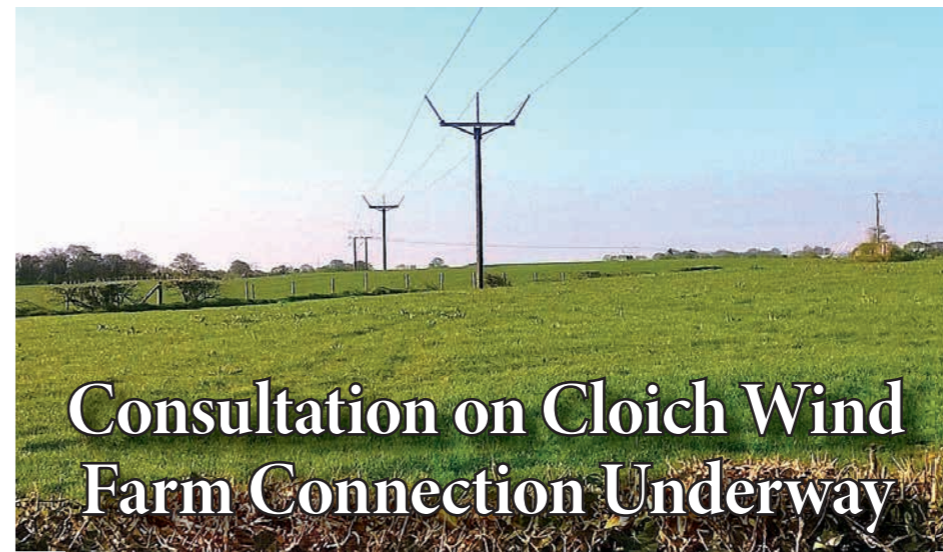
**S**P Energy Networks, the transmission network operator for Central and Southern Scotland, is consulting with communities in the Scottish Borders on its proposed connection plan for EDF's Cloich Forest Wind Farm.

The wind farm, located west of Eddleston village, would consist of 12 onshore wind turbines and be capable of producing enough electricity to meet the energy needs of around 34,000 homes each year.

In order for this green, renewable generation to go on to power homes and businesses across Scotland, the wind farm needs a connection into the electricity grid, provided by SP Energy Networks.

SP Energy Networks has decades of experience developing, delivering and maintaining overhead transmission lines across Scotland, working to rigorous environmental standards and with careful consideration of local communities and landscapes. It also has a legal duty to develop and maintain a technically feasible and economically viable transmission and distribution system and must fulfil this duty with due regard to environmental interests including natural and cultural assets and people.

The proposed connection would see a 132 kilovolt route made up of trident wood poles with galvanised steel arms supporting aluminium wires on



## Consultation on Cloich Wind Farm Connection Underway

insulators. The poles will stand around 14m in height, and will be spaced between 80m to 100m apart, running a total distance of approximately 25 miles (40 km) between the Cloich Forest Windfarm to connect into Currie Substation.

During the construction period, temporary tower construction areas and construction compounds would be built to store materials. Following the completion of the overhead line the construction area and compound would be decommissioned. The location of these is yet to be determined.

The proposed route has been chosen by SP Energy Networks as the best possible option, transporting the vital renewable electricity generated by the wind farm while also being sympathetic to the natural landscape and minimising any potential impact on people and wildlife in the surrounding areas.

Nishant Gupta, SP Energy Networks Project Manager, said: "We pride ourselves on putting our communities at the heart of everything we do, ensuring that every

decision and operation is carried out in a way that will ultimately provide benefit.

"Ahead of building any new electricity line we work closely with environmental consultants, key stakeholders and the community to come up with an option that balances providing a robust and reliable electricity network we all need with landscape, wildlife and visual considerations.

"The consultation process is now underway, and we hope to be able to discuss our proposed connection project with members of the community and address any concerns they may have."

• The consultation process opened on 13 May and will close on 17 June. Full details of SP Energy Networks plan and how to provide your thoughts on the project can be found here: <https://tinyurl.com/5hexexe6>

• A public exhibition will be held on Monday 3 June between 1pm and 7pm at Balerno Community Centre, 7-11 Main Street, Balerno.

## Couch to 3K—and Back to Couch

GRAHAM DANE  
C&B NEWS

**M**y son-in-law Richard was a good man and a good father. He fell ill 13 years ago and, a bit later, was diagnosed with Stage Four bowel cancer. He died five months after that, three months before his younger daughter's first birthday. He was too young to have had a routine test for the condition.

Many people reading this will have at least some idea of the grief and devastation caused by such a loss. The fight against cancer has been a major interest of mine ever since—a way to spare other individuals and families this awful experience.

Having never run to anything more distant than the next bus stop, it has been easy to resist invitations to take part in a sponsored run, but my resolve cracked when I read my daughter's brief comment on the last anniversary of Richard's death.

So it was an "entry level" 3K (1.9 miles) run/jog/walk round Hopetoun House that my computer entered me for before I could stop it.

Walking seemed a too-easy option (though quite a popular one on the day) so training began in earnest and soon I could jog 400 metres before having to stop for a cup of tea. It was hugely helpful to remember being told that the first kilometre was the most difficult, so I persisted: 600 metres, 900 metres and the first kilometre two weeks before the big day.

Did I run 3K? Well, mostly; there was a short walking section in the middle. It wasn't exactly a pleasant experience – have you ever seen a jogger smiling – but definitely worth doing once.

Most importantly, two dozen people chipped in, usually adding Gift Aid, so Cancer Research UK collected £600. Well done to all those who took pity on me, and also made it impossible to drop out.



## Wellbeing: Summer Berries

WE'RE PLEASED TO INTRODUCE A NEW REGULAR COLUMNIST READY TO HELP YOU TAKE CARE OF YOURSELF!

**S**cottish berry season has started and, for the next couple of months, we can look out for locally grown raspberries and strawberries in our supermarkets. Scotland produces some of the best soft fruit in Europe because – believe it or not – we have the best conditions! Long hours of daylight with a temperate climate provide just the sorts of conditions that soft fruit loves best. A trip to any of our local berry farms may be rewarded with wonderful fresh supplies of not just strawberries and raspberries, but also currants, gooseberries, blueberries, cherries, elderberries and blackberries—brambles to most of us!

**B**erries are delicious and, for many of us, they are the taste of summer. But they are also really healthy! They are bursting with anti-oxidants that are linked with regulating inflammation and protecting cells from oxidative damage. A diet high in antioxidants may reduce the risk of many diseases, including certain types of cancer, type 2 diabetes, and heart disease. Berries are a good source of soluble fibre, and contain good sources of lots of vitamins and minerals. Strawberries in particular are high in vitamin C (average 35% RDA). Eat your berries raw and as fresh as possible to keep the nutrient levels high, or freeze quickly if you want to use them later.

**M**any of us will have memories of "pick your own" berries—perhaps from the garden, or maybe a farm. It can be a fun family activity for a summer day. There are plenty soft fruit farms in our area to visit, but for a bigger (and cheaper) trip out, try the huge berry farms in Fife or Perthshire. Many have additional attractions for children like tractor rides or farm animals, and make a great day out in the summer holidays.

**O**f course, any walk in the local woodland or the Pentland hills can offer the chance to forage for wild berries. Our law permits us to pick wild edible plants for our own consumption, so providing you access the land responsibly (within the Scottish Outdoor Access code), you can find and pick from nature's own supermarket - elderberries, wild raspberries and alpine strawberries, brambles, sloes and more! Make sure you pick across a number of plants, leaving plenty behind for wildlife, and use common sense to avoid fruit that might be dirty or contaminated, washing everything thoroughly before use.

There is something wholesome about walking in nature, picking fruit and taking it home to eat or cook with - perhaps it harks back to a simpler life and speaks to our ancestral memories of living from the land. What's not to love? Free food, time spent outdoors with family or friends, and the goodness of healthy and delicious Scottish summer berries.

Annette Wilson is a health coach, teacher of mindfulness, complementary therapist and walk leader at Pond Wellness [www.pondwellness.co.uk](http://www.pondwellness.co.uk)

**Appendix B**  
Newspaper Adverts

Cloich Forest Wind Farm Connection Project  
December 2024

**B.3 Evening Edinburgh News - May 2024**

## Cloich Forest Wind Farm Connection Project



### We'd like your views!

**Scotland is a world leader in the fight against climate change.**

Our country has a target of Net Zero carbon emissions by 2045, with the UK aiming for Net Zero by 2050.

To help meet those targets, SP Energy Networks needs to strengthen Scotland's electricity transmission and distribution network so we can transport increasing amounts of clean, green energy from where it's produced to where it's needed.

Our transmission work includes the provision of a new 132kV wood pole overhead line connecting the proposed Cloich Forest Wind Farm substation to the grid at Currie substation.

We have identified a preferred route for the proposed new overhead line, and we would like to hear local people's views to help us develop our plans.

**Our public consultation runs from Monday 13 May 2024 to Monday 17 June 2024.**

### Public exhibitions

| Date                             | Location  |
|----------------------------------|---|
| 28th May 2024,<br>11:30am to 6pm | St Andrew's New Church Hall,<br>Main Street, <b>West Linton</b> , EH46 7EE            |
| 29th May 2024,<br>1pm to 6pm     | Tarbrax Village Hall,<br>Crosswood Terrace, Tarbrax, <b>West Calder</b> , EH55 8XE    |
| 3rd June 2024,<br>1pm to 7pm     | Balerno Community Centre,<br>7 - 11 Main Street, <b>Balerno</b> , Edinburgh, EH14 7EQ |

We are holding three public exhibitions where you can view our plans and talk to the project team. Information relating to the proposed overhead line, including a virtual consultation room, will also be made available online from the **13th May 2024** at:

[www.spenergynetworks.co.uk/pages/cloich.aspx](http://www.spenergynetworks.co.uk/pages/cloich.aspx)

You can leave comments on the website, and you can also contact us in the following ways:

**Email:** [Cloichprojectmanager@spenergynetworks.co.uk](mailto:Cloichprojectmanager@spenergynetworks.co.uk)

**Post:** Cloich Project Manager,  
Land and Planning Team  
SP Energy Networks  
55 Fullarton Drive  
Glasgow, G32 8FA

At this stage, your comments are not representations to the planning authority. If we do make an application for development consent in future, you will be able to make formal representations to the planning authority at that stage.

**Appendix B**  
Newspaper Adverts

Cloich Forest Wind Farm Connection Project  
December 2024

**B.4 Borders Telegraph - May 2024**



## Local housing association is on shortlist

A BORDERS housing association is celebrating after its nomination for a national honour.

Scottish Borders Housing Association (SBHA) has been named as a finalist in the Scottish Home Awards 2024.

SBHA's new-build development at Tweed Court in Kelso has been short-listed in the category Affordable Housing Development (Social Rent under 100 units).

An association spokesperson said: "We're hugely proud to have received this recognition on such a complex project.

"Being short-listed reflects the hard work of all those involved in the completion of these lovely homes.

"Winners will be announced on June 13, so we'll be keeping our fingers crossed till then!"

The awards are being staged at the DoubleTree by Hilton Glasgow Central.

# Next phase of headstone safety checks set to begin

By Paul Kelly  
Local democracy reporter

THE next stage of headstone safety checks are to be launched at three Borders cemeteries.

More than 1,800 headstones have been flattened in recent years amid fears the structures could topple over.

But the policy led to protests from bereaved families who claimed it was a desecration of the cherished memorials.

Scottish Borders Council manages 155 cemeteries and burial grounds across the region, of which 146 fall under a programme of routine Headstone Safety Inspection.

While government guidance states lairholders are responsible for maintenance and repair of their headstones and memorials, SBC as a burial authority has a legal obligation to ensure public safety and, as far as is reasonably practicable, that cemeteries are maintained in a safe condition.

A pilot scheme of re-erecting



GRAVE CONCERNS: Over 1,800 headstones have been flattened. Image: Pixabay

headstones was carried out at Lenel Cemetery in Coldstream last year, where 52 memorials were identified as being suitable for re-instatement.

Based on the lessons learned

from that trial a new partnership approach with private contractors has been agreed.

The local authority will now signpost memorial owners to these contractors immediately at the

point of making a headstone safe.

This gives the memorial owners certainty over next steps and over costs for any repair works, mitigating any unnecessary distress.

The council is also exploring financial support that may be offered where affordability remains a possible barrier.

Now the Headstone Safety Testing programme is to continue at Wilton Cemetery in Hawick (at the Burghal & Burghal South sections); Innerleithen (New Cemetery) and Peebles (New Cemetery – sections NC, A & B).

A SBC spokesperson said: "Headstones which are deemed to be unsafe will either be socketed, laid flat or cordoned off.

"We will be placing signs at any headstones which have failed the safety inspection and have had to be made safe providing relevant information for families."

If you have any questions regarding any aspect of headstone testing and making safe, contact can be made with the Bereavement Services Team on 0300 100 1800 or via email [placecemeteries@scot-borders.gov.uk](mailto:placecemeteries@scot-borders.gov.uk)

### PUBLIC NOTICE

#### Cloich Forest Wind Farm Connection Project



#### We'd like your views!

##### Scotland is a world leader in the fight against climate change.

Our country has a target of Net Zero carbon emissions by 2045, with the UK aiming for Net Zero by 2050.

To help meet those targets, SP Energy Networks needs to strengthen Scotland's electricity transmission and distribution network so we can transport increasing amounts of clean, green energy from where it's produced to where it's needed.

Our transmission work includes the provision of a new 132kV wood pole overhead line connecting the proposed Cloich Forest Wind Farm substation to the grid at Currie substation.

We have identified a preferred route for the proposed new overhead line, and we would like to hear local people's views to help us develop our plans.

**Our public consultation runs from Monday 13 May 2024 to Monday 17 June 2024.**

#### Public exhibitions

| Date                          | Location   |
|-------------------------------|--|
| 28th May 2024, 11:30am to 6pm | St Andrew's New Church Hall, Main Street, <b>West Linton</b> , EH46 7EE            |
| 29th May 2024, 1pm to 6pm     | Tarbrax Village Hall, Crosswood Terrace, Tarbrax, <b>West Calder</b> , EH55 8XE    |
| 3rd June 2024, 1pm to 7pm     | Balerno Community Centre, 7 - 11 Main Street, <b>Balerno</b> , Edinburgh, EH14 7EQ |

We are holding three public exhibitions where you can view our plans and talk to the project team. Information relating to the proposed overhead line, including a virtual consultation room, will also be made available online from the **13th May 2024** at:

[www.spenergynetworks.co.uk/pages/cloich.aspx](http://www.spenergynetworks.co.uk/pages/cloich.aspx)

You can leave comments on the website, and you can also contact us in the following ways:

**Email:** [Cloichprojectmanager@spenergynetworks.co.uk](mailto:Cloichprojectmanager@spenergynetworks.co.uk)

**Post:** Cloich Project Manager, Land and Planning Team SP Energy Networks 55 Fullarton Drive Glasgow, G32 8FA

At this stage, your comments are not representations to the planning authority. If we do make an application for development consent in future, you will be able to make formal representations to the planning authority at that stage.

# SUPERCHARGE YOUR BUSINESS



## WITH ZOOM-IN LEAFLET SOLUTIONS



Find out more at [zoominleaflets.co.uk](http://zoominleaflets.co.uk)

t: 0845 1999 830

e: [localsales@zoominleaflets.co.uk](mailto:localsales@zoominleaflets.co.uk)



**Appendix B**  
Newspaper Adverts

Cloich Forest Wind Farm Connection Project  
December 2024

**B.5 Peeblesshire News - May 2024**



Eric Liddell. Photo supplied by Borders Book Festival

# Festival to mark 'lovely legacy' of famed athlete

**Isabelle Truscott**  
editorial@bordertelegraph.co.uk

THE story of one of Scotland's most famed athletes will be brought to the Borders stage this summer.

In line with the Olympics returning to Paris in July, Borders Book Festival (BBF) is holding a celebratory event about Olympian Eric Liddell.

It coincides with the 100th anniversary of his Olympic gold win at the 1924 Paris games.

As part of the Eric Liddell 100 project, Liddell's biographer Sally Magnusson (*The Flying Scotsman: The Eric Liddell Story*) will be joined by his niece Sue Caton, Olympian Allan Wells, and fellow Olympian Eric Liddell 100 ambassador Eilidh Doyle to discuss the *Flying Scotsman's* life.

Liddell was born to Scottish parents – his mother came from Paxton – in China and returned to Scotland with his family while they were on furlough from their missionary work.

His story was immortalised in the 1981 classic *Chariots of Fire*, which when adapted for the stage starred Borders actor Jack Lowden as Liddell.

The film showed Liddell's strong faith, as he chose not to take part in the 1924 100m as

the race was held on a Sunday, he instead competed in the 400m and won gold.

While Liddell's life as an athlete and Olympic gold medalist are well documented, his time as a missionary in China isn't as well known.

Ms Caton said: "He's got a lovely legacy that people should know about.

"He lived an unusual life and he was a very unusual and extraordinary person.

"He was a winning athlete in more ways than one, and he just turned his back on that because his mission in life was to go back to China.

"The last part of his life he was an outreach missionary in the north of China, he had some hair-raising things that went on because it was when the Japanese had captured that part of China.

"He thought everybody was equal, he wanted to help anybody that needed help.

"I think we need to learn a little bit from that today."

Liddell's legacy has been lasting.

At the 1980 Olympic Games in Moscow Allan Wells won the gold medal for the 100m – the race Liddell had intended to compete in in 1924.

After his win, Wells was asked by reporters if his win was dedicated to Harold Abrahams – who won the 100m gold in 1924 and was also a lead character in *Chariots of Fire*.

In response Wells told them: "If anything I did it for Eric Liddell".

He added: "Eric was quite prominent at that point.

"Something strange happened to me, there was a second hand book sale at Meadowbank one night, it was certainly before I won the Olympic gold medal, and I thought I would go in and see what was going on.

"I went into a box and I saw this little booklet, put my hand in to get it out and there it was, it was Eric Liddell."

Liddell's story was one the BBF knew it wanted to tell, especially with the athlete and missionary's connection to the Borders.

Alistair Moffat, founder of the BBF, said: "When I found out that Eric Liddell's mother was from the Borders, I knew that we just had to have an event at this year's Borders Book Festival, 100 years on from Liddell's 100m Olympic win, and in a year when the Olympics return to Paris, where Liddell earned his medal in 1924.

"I mean, who could resist that story."

The Eric Liddell 100 event in the Harmony Marquee will take place on Saturday, June 15, at 2pm.

For more information and book tickets for this centenary event, visit the Borders Book Festival website.



## Glasses at the ready, wine lovers

Save over 50% and enjoy 12 top drops for just £4.99 a bottle

Enjoy a dozen mouth-watering wines for just £4.99 a bottle, complete with two free stemless wine glasses and free express delivery, when you join our WineBank service.

Trustpilot  
Rated 'Excellent' based on over 22,000 reviews



- ✓ 12 luxurious wines
- ✓ Available as an all-red, all-white or mixed wine selection
- ✓ Huge £78 saving
- ✓ Free glasses worth £14.99
- ✓ Free delivery worth £7.99

Was £137.88 | Now £59.88

Scan the QR code to order now, or visit [virginwines.co.uk/VF2902](https://virginwines.co.uk/VF2902)  
Call 0343 224 1001 quoting VF2902

T&Cs: New customers only. UK Delivery only. You must be 18 years of age or over. One case per customer. Not to be combined with any other promotion. By redeeming this offer you agree to try the Virgin Wines WineBank. Calls may be monitored or recorded. For full T&Cs, visit [www.virginwines.co.uk/terms](https://www.virginwines.co.uk/terms)

### PUBLIC NOTICE

## Cloch Forest Wind Farm Connection Project



### We'd like your views!

#### Scotland is a world leader in the fight against climate change.

Our country has a target of Net Zero carbon emissions by 2045, with the UK aiming for Net Zero by 2050.

To help meet those targets, SP Energy Networks needs to strengthen Scotland's electricity transmission and distribution network so we can transport increasing amounts of clean, green energy from where it's produced to where it's needed.

Our transmission work includes the provision of a new 132kV wood pole overhead line connecting the proposed Cloch Forest Wind Farm substation to the grid at Currie substation.

We have identified a preferred route for the proposed new overhead line, and we would like to hear local people's views to help us develop our plans.

Our public consultation runs from Monday 13 May 2024 to Monday 17 June 2024.

#### Public exhibitions

| Date                          | Location   |
|-------------------------------|--|
| 28th May 2024, 11:30am to 6pm | St Andrew's New Church Hall, Main Street, <b>West Linton</b> , EH46 7EE            |
| 29th May 2024, 1pm to 6pm     | Tarbrax Village Hall, Crosswood Terrace, Tarbrax, <b>West Calder</b> , EH55 8XE    |
| 3rd June 2024, 1pm to 7pm     | Balerno Community Centre, 7 - 11 Main Street, <b>Balerno</b> , Edinburgh, EH14 7EQ |

We are holding three public exhibitions where you can view our plans and talk to the project team. Information relating to the proposed overhead line, including a virtual consultation room, will also be made available online from the **13th May 2024** at:

[www.spenergynetworks.co.uk/pages/cloch.aspx](https://www.spenergynetworks.co.uk/pages/cloch.aspx)

You can leave comments on the website, and you can also contact us in the following ways:

**Email:** [Clochprojectmanager@spenergynetworks.co.uk](mailto:Clochprojectmanager@spenergynetworks.co.uk)

**Post:** Cloch Project Manager, Land and Planning Team SP Energy Networks 55 Fullarton Drive Glasgow, G32 8FA

At this stage, your comments are not representations to the planning authority. If we do make an application for development consent in future, you will be able to make formal representations to the planning authority at that stage.

# Appendix C

## Consultation Leaflet



## We want to hear your views!

Our consultation period will run between **Monday 13th May and Monday 17th June**. Please submit any comments to us by **midnight on Monday 17th June 2024**. Following this date, the information will remain accessible online and available to download.

Please find details below on how to get in touch with us and find out more:

 Visit the website: [www.spenergynetworks.co.uk/pages/cloich.aspx](http://www.spenergynetworks.co.uk/pages/cloich.aspx)

 Email us: [Cloichprojectmanager@spenergynetworks.co.uk](mailto:Cloichprojectmanager@spenergynetworks.co.uk)

 Send us a letter  
**Cloich Project Manager**  
Land and Planning Team, SP Energy Networks,  
55 Fullarton Drive, Glasgow, G32 8FA

 Attend a public exhibition

The exhibitions will be held at the following locations and times:

**Tues 28th May 2024 between 11:30am – 6pm**

St Andrew's New Church Hall, Main Street, West Linton, EH46 7EE

**Wed 29th May 2024 between 1pm - 6pm**

Tarbrax Village Hall, Crosswood Terrace, Tarbrax, West Calder, EH55 8XE

**Mon 3rd June 2024 between 1pm - 7pm**

Balerno Community Centre, 7- 11 Main Street, Balerno, Edinburgh, EH14 7EQ

 Visit the online virtual exhibition

[www.spenergynetworks.co.uk/pages/cloich.aspx](http://www.spenergynetworks.co.uk/pages/cloich.aspx)

## What happens next

Your comments will be reviewed and fed into the detailed design and alignment for the new OHL, which will be the subject of the Section 37 application to the Scottish Government's Energy Consents Unit. The comments received in this consultation will also be collated into a report which will be made publicly available on SP Energy Networks website.

Detailed Design

Scoping

EIA & Second Round of Consultation

Section 37 Submission



## Cloich Forest Wind Farm Connection Project Preferred Route for a New 132kV Overhead Line

### Background

The Cloich Forest Wind Farm Connection Project involves a 132 kilovolt (kV) overhead line (OHL) supported on wood poles, located between the proposed Cloich Forest Wind Farm substation in the Scottish Borders Council area, and the existing substation at Currie in the City of Edinburgh Council area.

The connection is required to allow the proposed Cloich Forest Wind Farm to input into the electricity network if approved. SP Energy Networks (SPEN) has a legal duty to keep its network up-to-date to safeguard electricity supplies. SPEN also has a duty to provide a connection for new generation to the wider electricity transmission network.



## What will the overhead line look like?

The proposed OHL will be supported by trident wood poles with galvanised steelwork cross arms supporting aluminium conductors (wires) on insulators. These are suitable for supporting single circuit lines operating at 132 kV.

Wood poles are dark brown in colour when newly constructed and weather over the years to a light grey. They have a standard height above ground of approximately 14 metres (m), but these can be increased or reduced as required where circumstances dictate, e.g. over elevated land, structures or features.

The distance between wood poles will average between 80 m to 100 m, but can be increased if there is a requirement to span a larger distance due to the presence of a feature in the landscape, such as a reservoir.

The precise pole configuration, height and span will be determined after a detailed line design has been agreed.

Typical trident wood pole



## Preferred Route Option

SPEN has been working with independent environmental consultants to identify options for potential routes for the proposed OHL. Our objective is to identify a route for the overhead line which meets the technical requirements of the electricity system, which are economically viable and cause, on balance, the least disturbance to the environment and the people who live, work and enjoy recreation within it.

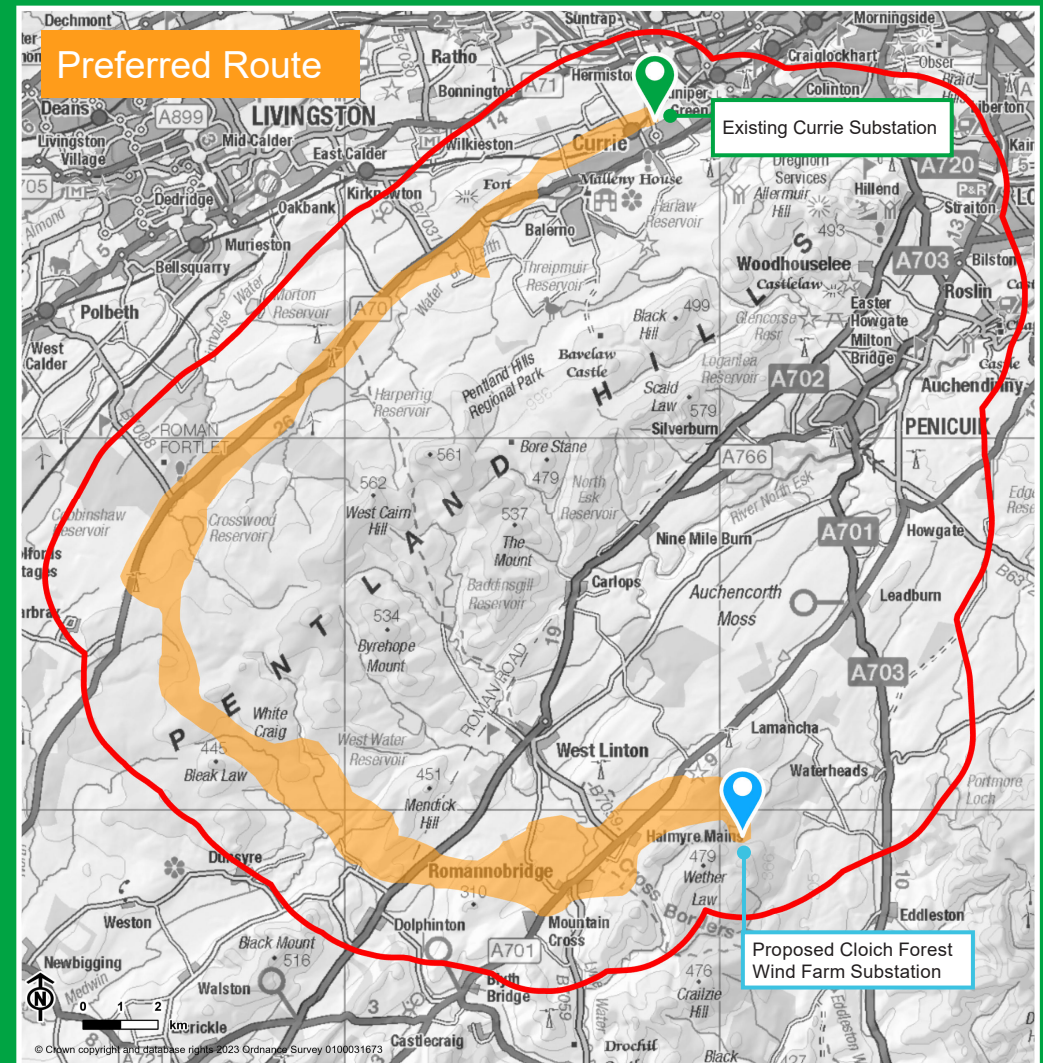
SPEN are committed to engaging with stakeholders, including local communities, through the consultation process and your feedback will be used to review the routing findings and inform the next steps.

### What we would like your views on?

As part of the consultation we would like your views on:

- 1 The preferred route for the Cloich Forest Wind Farm Connection Project
- 2 Any other issues, suggestions or feedback you would like us to consider. We would particularly like to hear your views on your local area, for example areas you use for recreation, local environmental features you would like us to consider, and any plans you may have to build in proximity to the preferred route.

## Cloich Forest Wind Farm Connection Project



More information about the process we have followed to identify, appraise and select the preferred route can be found on the project website:

[www.spenergynetworks.co.uk/pages/cloich.aspx](http://www.spenergynetworks.co.uk/pages/cloich.aspx)

Please note comments at this stage are informal comments to SPEN and are made to allow SPEN to determine whether changes to the preferred route are necessary. An opportunity to comment formally to the Scottish Government Energy Consents Unit will follow at a later stage in the process following submission of the Section 37 application.

# Appendix D

## Presentation Banner

# Welcome

Welcome and thank you for attending this public exhibition for the **Cloich Forest Wind Farm Connection Project** (the Proposed Development).

The purpose of this exhibition is to provide you with an opportunity to learn about the project, ask questions and provide us with feedback on the preferred route.

Following this consultation, the proposed route will be finalised and a detailed Section 37 application, which will include an Environmental Impact Assessment (EIA), will be submitted to the Scottish Government's Energy Consents Unit for their consideration and determination.

A copy of the Routeing and Consultation Report (May 2024) is also available for download from

[www.spenergynetworks.co.uk/pages/cloich.aspx](http://www.spenergynetworks.co.uk/pages/cloich.aspx)

Our consultation runs from **13th May to 17th June 2024** and includes three in-person public exhibition events on **Tuesday 28th May, Wednesday 29th May, and Monday 3rd June 2024**.

However, the information will remain accessible online at the website above and available to download in a PDF format after the consultation closes.

## Cloich Forest Wind Farm Connection Project

[www.spenenergynetworks.co.uk](http://www.spenenergynetworks.co.uk)

# Background

## Need for the Proposed Development

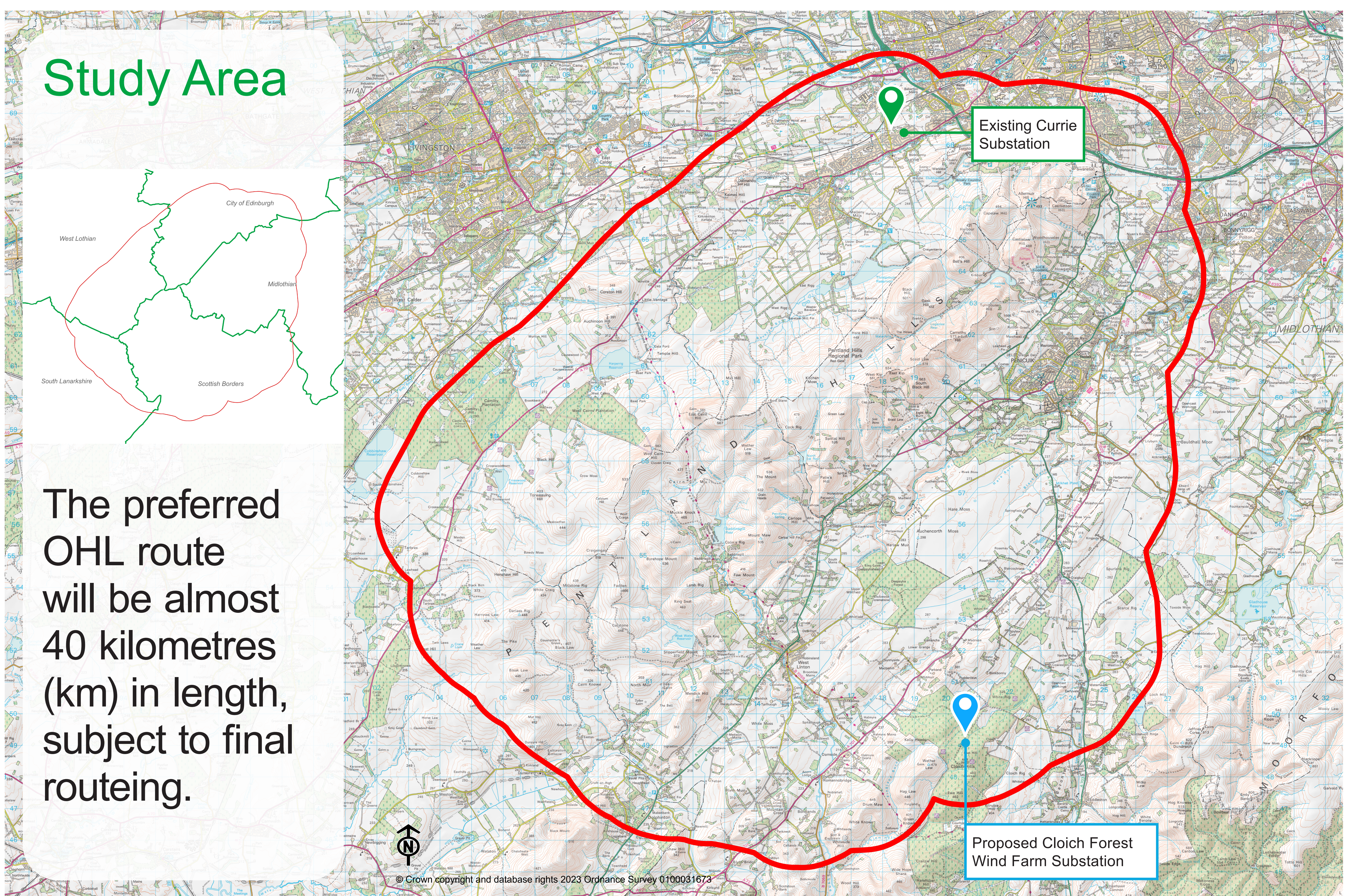
SP Energy Networks received a request to provide a grid connection to the Cloich Forest Wind Farm. The connection is required to allow the Cloich Forest Wind Farm to input into the electricity network if approved.

To comply with its statutory and license obligations, SP Energy Networks must provide the Cloich Wind Farm with a connection to the transmission system.

## Identifying the Proposed Route

The Cloich Forest Wind Farm Connection Project involves a 132 kilovolt (kV) overhead line (OHL) supported on wood poles, located between the proposed Cloich Forest Wind Farm substation in the Scottish Borders Council area and the existing substation at Currie in the City of Edinburgh Council area.

A study area was identified, and the project team appraised four broad route options in which an OHL could be located between the two substations. Following a detailed appraisal of all the route options, a preferred route was selected, which achieves the best balance between minimising the impact on the environment and people, as well as meeting our technical feasibility requirements.



# Cloich Forest Wind Farm Connection Project

[www.spenenergynetworks.co.uk](http://www.spenenergynetworks.co.uk)

# What will the Overhead Line look like?

The OHL is proposed to be supported by wooden trident poles with galvanised steelwork cross arms supporting aluminium conductors on insulators. These are suitable for supporting single circuit lines operating at 132 kV.

Wood poles have a standard height above ground of approximately 14 metres (m), but these can be increased or reduced as required where circumstances dictate, e.g. over elevated land, structures or features.

The distance between wood poles will average between 80 m to 100 m but can be increased if there is a requirement to span a larger

distance due to the presence of a feature in the landscape, such as a reservoir. The precise pole configuration, height and span will be determined after a detailed line design has been agreed.

In terms of operation and maintenance, whilst most OHL components are maintenance free, exposed elements which suffer from corrosion, wear, deterioration and fatigue may require inspection and periodic maintenance. A wayleave corridor typically 60 m wide (30 m either side of the centre of the OHL) will be sought for access to the OHL, which would be kept clear from obstruction at all times.



A typical trident wood pole structure.

## Cloich Forest Wind Farm Connection Project

[www.spenenergynetworks.co.uk](http://www.spenenergynetworks.co.uk)

# Climate Emergency

The effects of climate change are widely acknowledged as one of the biggest global, economic, environmental, and social concerns that the world is currently experiencing.

One of the primary aims of the Scottish Government is to move towards a low carbon economy by reducing carbon dioxide emission levels by 100% (net zero) by 2045. The Scottish Government recognises that renewable energy technologies will play a key role in the delivery of the emission reduction targets to achieve 'Net Zero'.

The Scottish Government's Climate Change Plan Update 2020, states that by 2032 *'renewable energy generation in Scotland will account for the equivalent of 50% of our energy demand across electricity, heat and transport' and that 'our electricity system will have deepened its transformation for the better, with over 100% of Scotland's electricity demand being met by renewable sources'.*

National Planning Framework 4 (2023) identifies *'strategic renewable energy generation and transmission infrastructure'* as a national development which will support the delivery of sustainable places, and

it is acknowledged that grid infrastructure can help to reduce emissions and improve security of supply. Policy 11 states that:

*'development proposals for all forms of renewable, low-carbon and zero emissions technologies will be supported. These include (ii) enabling works, such as grid transmission and distribution infrastructure'.*

The City of Edinburgh Council, West Lothian Council, South Lanarkshire Council, Scottish Borders Council and Midlothian Council have all declared a climate emergency, and have committed to reaching net zero either by 2030 or 2045. This is in line to support the national targets for the Scottish and UK Governments.

SP Energy Networks recognises that our electricity networks are the backbone of the energy system which sits at the heart of this Net Zero transition. SP Energy Networks is currently at the forefront of decarbonising our energy system, having already connected approximately one quarter of all onshore wind in Great Britain to the distribution network. SP Energy Networks recognises our key role in helping the Government meet its climate change targets.

## Cloich Forest Wind Farm Connection Project

[www.spenenergynetworks.co.uk](http://www.spenenergynetworks.co.uk)

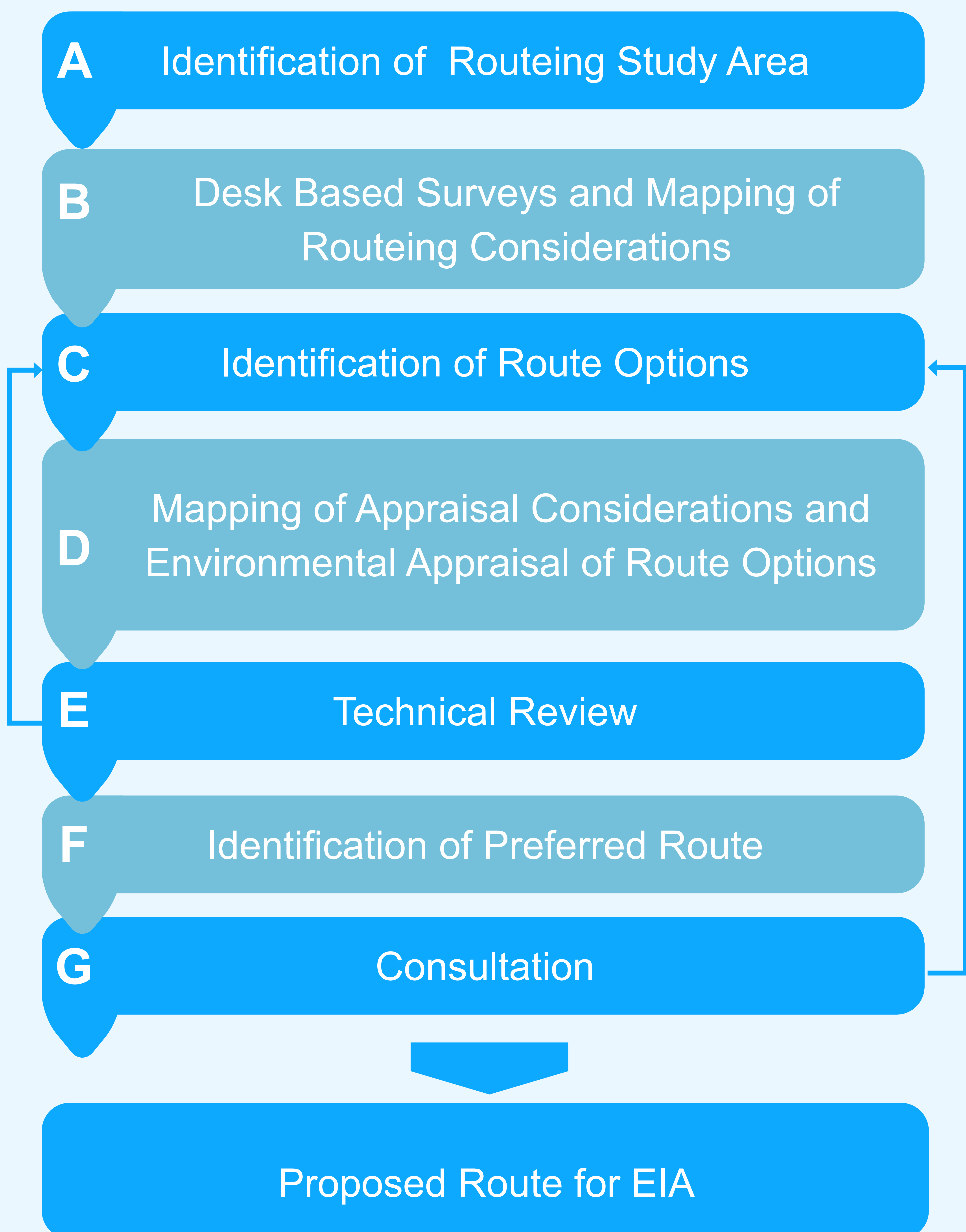
# Routeing Methodology

SP Energy Networks has been working with independent consultants to identify potential route options for the new OHL between the proposed Cloich Wind Farm substation and the existing Currie substation. Our objective is to identify a route for the new OHL which meets the technical requirements of the electricity system, which is economically viable and causes,

on balance, the least disturbance to the environment and the people who live, work and enjoy recreation within it.

An overview of the routeing methodology for the new OHL is illustrated below, with full details included in the Routeing and Consultation Document (May 2024).

## Routeing Methodology



## Cloich Forest Wind Farm Connection Project

[www.spenenergynetworks.co.uk](http://www.spenenergynetworks.co.uk)



# Routeing Considerations

Given the nature of OHLs, the primary environmental effects are likely to be landscape and visual effects. The best way to limit adverse effects on landscape and visual amenity is to have a landscape led approach to routeing, reflecting the Holford Rules (guidelines for routeing OHLs) and taking account of the other routeing considerations.

A study area was established, and areas of national and regional value were mapped and avoided where possible in the identification of route options. The presence of the Pentland Hills Regional Park proved to be the driving factor in identifying routes, posing both a technical constraint, and sensitive landscape feature.

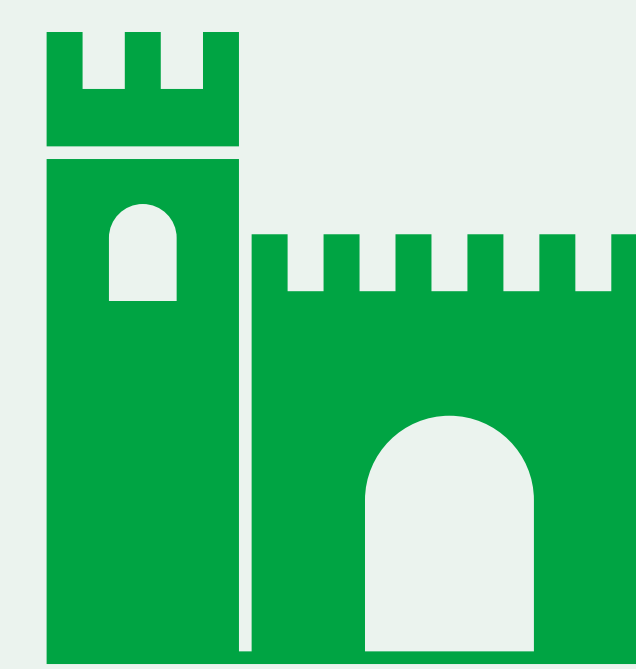
**The routes were also appraised for their impact on a range of criteria including:**



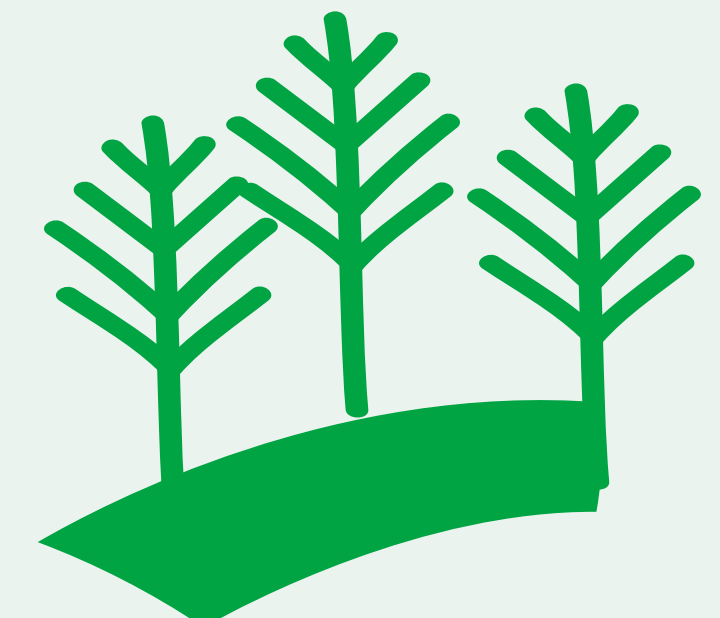
**Landscape and visual amenity,** including local views and the character of the landscape.



**Biodiversity,** including ecology and ornithology.



**Cultural heritage,** including heritage asset.



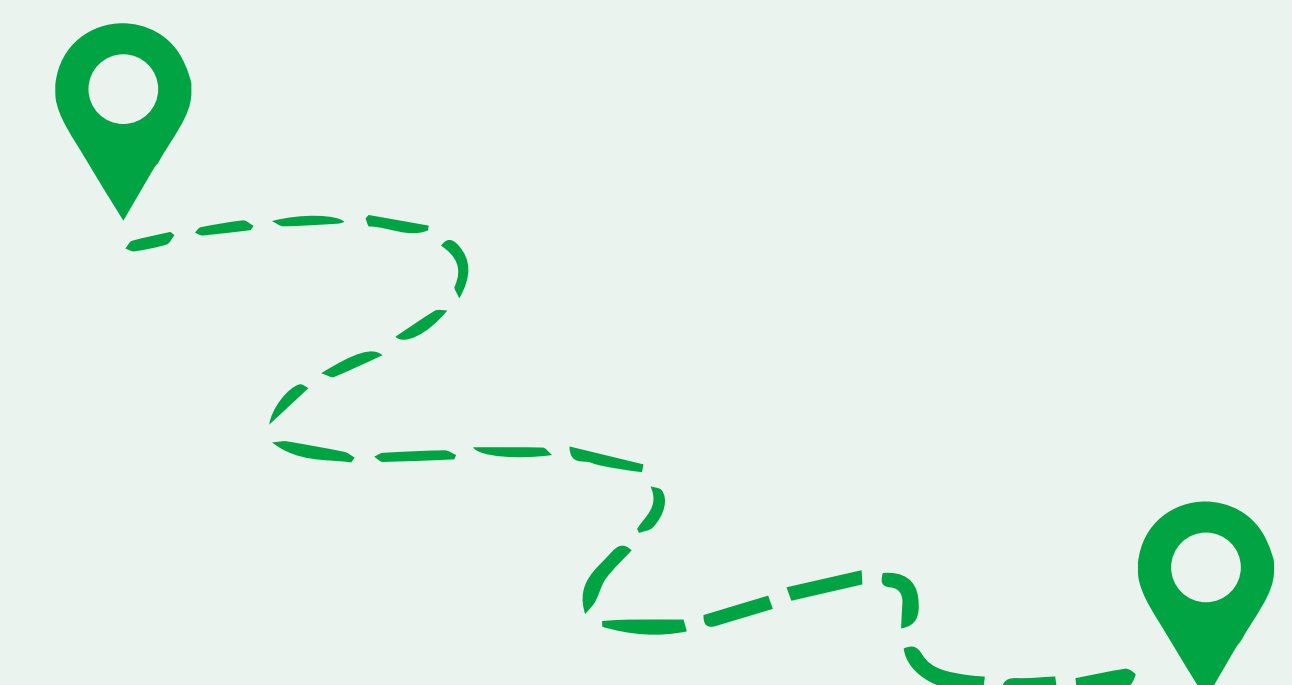
**Forestry and woodland,** including ancient woodland.



**Hydrology and peat,** including flood risk and hydrogeology.



**Other land uses,** including planning allocations, recreation and tourism.



**SP Energy Network's technical considerations,** including topography, existing infrastructure and distance.

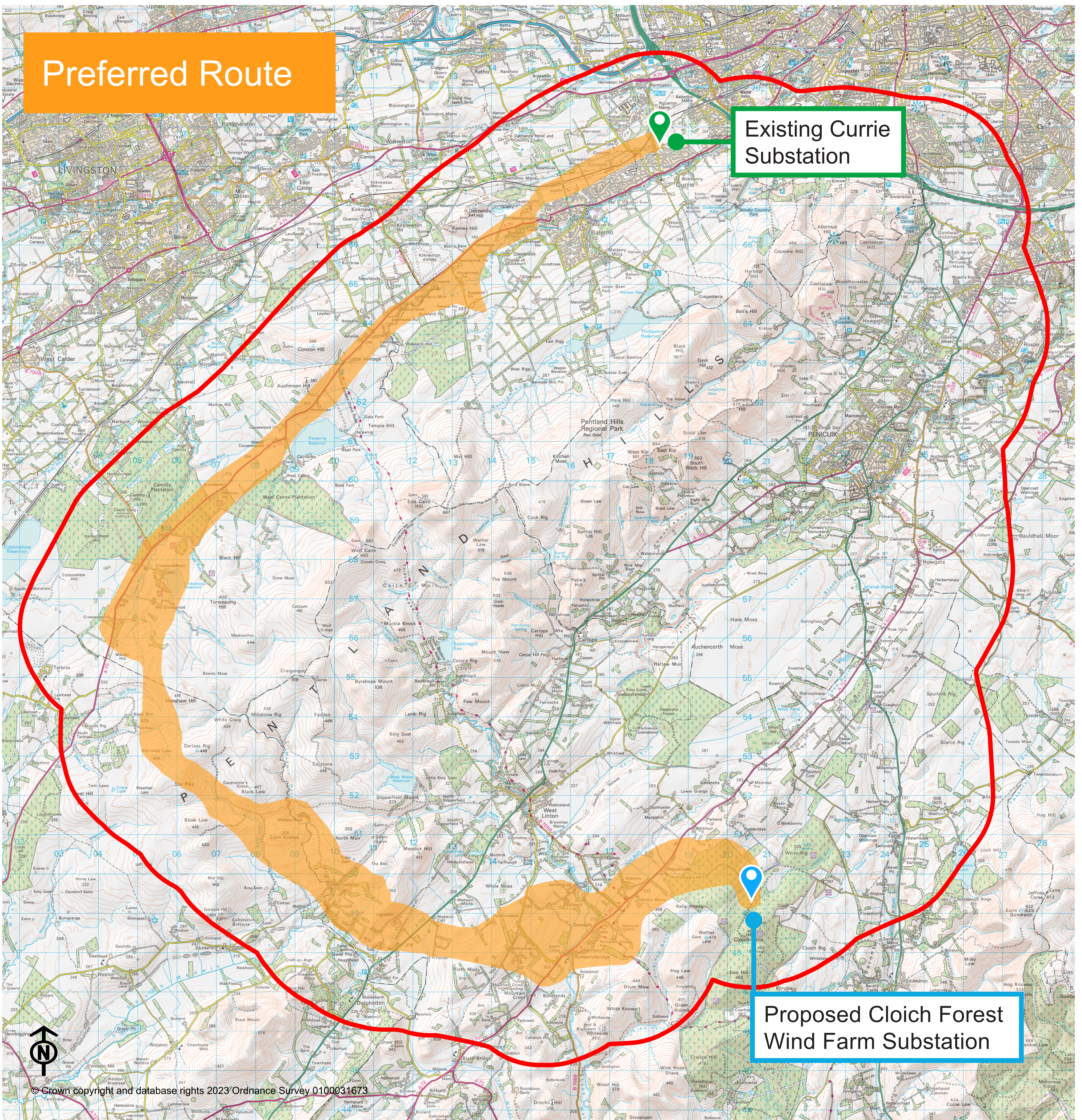
Maps are available on the desks nearby illustrating the constraints faced within the study area for this connection project.

## Cloich Forest Wind Farm Connection Project

[www.spenenergynetworks.co.uk](http://www.spenenergynetworks.co.uk)

# The Preferred Route

We believe the preferred route achieves the best balance between our technical requirements and minimising the impact on the environment and the people, who live, work and enjoy spending their time in the area.



## Cloich Forest Wind Farm Connection Project

[www.spenenergynetworks.co.uk](http://www.spenenergynetworks.co.uk)

# The Preferred Route

The preferred route will run in a south-westerly direction from Currie substation along the northern settlement boundary towards Ravelrig Quarry, broadly following the A70 as far as Crosswood Burn. The proposed OHL route will then wind south-east towards Fernihaugh and Garvald, and then head north-east towards Rommanobridge, broadly following the A701 north as far as the proposed Cloich Wind Farm substation on the Cloich Hills.

The preferred route avoids crossing the dominant central landscape features within the Pentland Hills Regional Park,

minimises impacts on sensitive heritage assets including conservation areas and a historic battlefield, residential amenity and core paths, and avoids priority peatland.

The reasoning for the use of these criteria and an outline of the methodology for appraising each route option against these is detailed in the Routeing and Consultation Document (2024).

The detailed location of the new wood poles within the route corridor has still to be developed through a detailed design/technical review process.



A typical trident wood pole structure.

## Cloich Forest Wind Farm Connection Project

[www.spenenergynetworks.co.uk](http://www.spenenergynetworks.co.uk)

# We want to hear your views!

Thank you for taking the time to visit this public exhibition. This event is an opportunity for you to provide feedback on the preferred route, and raise any suggestions as to further considerations and insight in the local area which you would like us to consider.

Our consultation period will run between **Monday 13th May and Monday 17th June**.

Please submit any comments to us by **midnight** on **Monday 17th June 2024**.

## What we would like your views on?

**1**

The preferred route for the Cloich Forest Wind Farm Connection Project

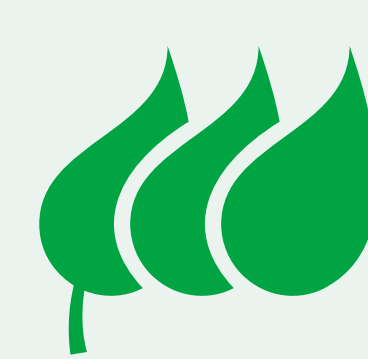
**2**

Any other issues, suggestions or feedback you would like us to consider. We would particularly like to hear your views on your local area, for example areas you use for recreation, local environmental features you would like us to consider, and any plans you may have to build in proximity to the preferred route.

Information relating to the proposed overhead line, including the Routing and Consultation Document (2024) and a virtual consultation room, will also be available online at:



[www.spenenergynetworks.co.uk/  
pages/cloich.aspx](http://www.spenenergynetworks.co.uk/pages/cloich.aspx)



You can leave comments on the website, and you can also contact us in the following ways:



Email us:

[Cloichprojectmanager@  
spenergynetworks.co.uk](mailto:Cloichprojectmanager@spenergynetworks.co.uk)



Send us a letter

**Cloich Project Manager**  
SP Energy Networks  
Land and Planning  
55 Fullarton Drive  
Glasgow  
G32 8FA

## Cloich Forest Wind Farm Connection Project

[www.spenenergynetworks.co.uk](http://www.spenenergynetworks.co.uk)

# Next Steps

Your comments will be reviewed and fed into the detailed design and alignment for the new OHL, which will be the subject of the Section 37 (S37) application to the Scottish Government's Energy Consents Unit (ECU). The comments received in this consultation will also be collated into a report which will be made publicly available on SP Energy Networks website.

## 1 Detailed Design

The next stage in the design of the preferred OHL route option will involve plotting the location of the wood poles, access routes and working areas.

## 2 Scoping

The first step in progressing the S37 application is submitting a Scoping Opinion request to the ECU to confirm the scope of the Environmental Impact Assessment (EIA).

## 3 EIA & Second Round of Consultation

We will carry out a detailed EIA and hold a second round of public consultation, so that people can give their views on the detailed route alignment, understand the findings of the EIA.

## 4 Section 37 Submission

After considering feedback received in the second round of consultation, we will finalise our proposals and submit an application under Section 37 to the Scottish Government's ECU for consideration by Scottish Ministers.



Thank you for taking the time to visit this public exhibition.

# Cloich Forest Wind Farm Connection Project

[www.spenenergynetworks.co.uk](http://www.spenenergynetworks.co.uk)

# **Appendix E**

## **Summary of Consultation Feedback from Routeing Stage**

**Appendix E**  
 Summary of Consultation Feedback from Routeing Stage

Cloich Forest Wind Farm Connection Project  
 December 2024

**Figure E.1: Summary of Consultation Feedback received3**

| Summary of Comments Received from Consultees  | Response  |
|---|---|
| <b>Statutory Consultees</b>   |   |
| <b>West Lothian Council</b>   |   |
| <ul style="list-style-type: none"> <li>Why are all roueting options only shown between Cloich Wind Farm and Currie Substation on the other side of the Pentland Hills? Are there no electricity substations closer to Cloich Wind Farm located to the east of the Pentland Hills in the same vicinity as the wind farm?</li> </ul>  | <p>The Currie Substation is the closest Grid Supply Point substation to the proposed Cloich Forest Wind Farm as the crow flies. The closest one to the east of the wind farm is the substation at Dun Law which is further away and does not have the required capacity.</p>                                      |
| <ul style="list-style-type: none"> <li>Has the Pentland Hills Regional Park Joint Committee been formally consulted as they have recently started meeting again following the Covid pandemic?</li> </ul>  | <p>The Pentland Hills Regional Park Joint Committee was approached on the 24<sup>th</sup> May 2024 by email correspondence.</p>   |
| <ul style="list-style-type: none"> <li>Shouldn't grid connection be considered earlier in the consenting process before new wind farms are sited?</li> </ul>  | <p>SPEN has a legal duty to develop and maintain a technically feasible and economically viable transmission and distribution system. It can only consider grid connections once a contracted position has been agreed with a third party.</p>  |
| <ul style="list-style-type: none"> <li>Is the megawatt output for Cloich Wind Farm proportionate to the need for the lengthy pole and wire-scape connection around the south and west sides of the Pentland Hills?</li> </ul>   | <p>Yes, the appropriate connection is a new 132kV circuit. Due to the lack of electrical infrastructure in the area Currie Substation is the closest point to interface with the SPT system.</p>  |
| <p>Raised the following concerns:</p> <ul style="list-style-type: none"> <li>running an OHL through the White Craig / Black Law areas (which has a number of summits in the 400-450m range) increases the risks of tall turbine proposals which could loom higher than the Pentland Hills which remain free of turbines to date.</li> <li>while the wooden pole connection has modest visual impacts, routing through the western Pentlands could set a course for potentially larger electricity pylons and lines in future.</li> <li>Policy 11 of NPF4 is supportive of energy proposals and that the proposed development will be determined by the Scottish Government which will consult with the local planning authorities in jurisdiction.</li> </ul> | <p>Currie Substation is the only viable connection option at this present time, other substations are at capacity and would require to be extended to facilitate this connection. This is a connection for a single wind farm and it would not be possible for other developments to connect to this circuit.</p> |

**Appendix E**  
 Summary of Consultation Feedback from Routeing Stage

Cloich Forest Wind Farm Connection Project  
 December 2024

| Summary of Comments Received from Consultees   | Response   |
|--|--|
| <b>Historic Environment Scotland</b>   |  |
| <p>Concerned that the preferred route option for the wind farm connection may lead to significant impacts on a scheduled monument: Romano Mains, two barrows (SM2728) which was not identified in the routeing report.</p> <p>HES happy to provide further advice on the proposals, particularly regarding impacts on Romano Mains, two barrows (SM2728) as the proposals develop and to discuss potential mitigation for any significant impacts. Recommend seeking advice from the local authority archaeology and conservation advisors regarding the potential impacts from the development on historic environment assets outside HES' remit.</p> <p>Romanno Mains, two barrows (SM2728) Scheduled Monument (located in Route Option 1F), comprise the remains of two prehistoric burial mounds located on a north-west facing slope. A prominent feature in the landscape, the monument has commanding open views west and north-westwards across lower ground towards the Pentland Hills. HES do not believe sufficient consideration to Romano Mains, two barrows and its setting has been given during the route options appraisal.</p> <p>Recommended the route in this area runs on the lower ground to the west of the A701 to avoid appearing prominently in key views from the monument.</p> <p>Noted a number of scheduled monuments located within 3km of route option 1A which should be taken into consideration within subsequent stages of the proposed development.</p> <p>HES' 'Managing Change' guidance note on Setting advises vegetation such as trees cannot necessarily be relied upon to mitigate adverse impacts of a development. Potential screening effect of the woodland should not be relied on when assessing potential impacts on the setting of these, or any other scheduled monuments, within subsequent assessment.</p> <p>Spitalhaugh House lies on the boundary of the preferred route (1F) while Cockburn Farm falls within the route 3A/4A. Unlikely that there would be significant impacts from the proposed overhead lines on the views to and from these assets, given height of the wood poles.</p> | <p>Cultural heritage has been taken into account as a key routeing consideration, and impacts have been weighed up in the Routeing and Consultation document against other statutory (Holford Rule 1 and 2) designations. Consideration of potentially significant effects on cultural heritage will be included in the EIA Report on all cultural heritage assets, including physical effects, setting change and cumulative effects.</p> <p>It should be noted that the Preferred Route was amended following consultation to reduce the potential for significant effects, and the Romano Mains, two barrows (SM2728) no longer falls within the Proposed Route. Nonetheless, potential for setting change on the Romano Mains, two barrows (SM2728) will be taken into consideration during the detailed alignment stage, and through to the EIA.</p> <p>Commentary with regards to vegetation screening is noted, and the HES 'Managing Change' guidance note will be referenced as part of the assessment methodology.</p> |



**Appendix E**  
 Summary of Consultation Feedback from Routeing Stage

Cloich Forest Wind Farm Connection Project  
 December 2024

| Summary of Comments Received from Consultees   | Response   |
|--|--|
| <p>Suggested that potential impacts on the setting of these assets are initially assessed when the preferred route is selected to ensure that significant impacts are avoided throughout the design process for the grid connection.</p>   |  |
| <p><b>Non-statutory Consultees</b></p>   |  |
| <p><b>Balerno Community Council Feedback</b></p> <p>Balerno Community Council raised the following points for consideration/response:</p> <ul style="list-style-type: none"> <li>■ Concerns regarding the general process for determining the location for power generators and distribution networks; community consulted at a stage when options are limited.</li> <li>■ Why is the connection point at Currie substation?</li> <li>■ Why has the preferred route been selected?</li> <li>■ Is there scoring criteria which SPEN has used to determine the preferred route?</li> <li>■ Can SPEN provide more detail re the comparative costs determined by the lengths of the routes?</li> <li>■ the Proposed development should be located close to roads and, preferably where relevant, railway lines.</li> <li>■ The section of the preferred route at the entrance to Balerno is particularly sensitive, especially around housing and at Ravelrig quarry which is currently the subject of a likely application for extension. The corridor for the route at that point appears to be very narrow, and we consider that there is a very strong argument for placing any power lines underground at least between a point west of Balerno and Currie Sub-station, as per other powerlines nearby.</li> <li>■ Interested in the provision of community benefit.</li> <li>■ Concerns with respect to potential unacceptable landscape and environmental impacts on the Murray Burn valley as it is already impacted by two HV power lines.</li> </ul> | <p>The preferred route for the 132kV connection was determined in accordance with the overarching project routeing strategy, reflecting the findings of the landscape and visual appraisal, including residential amenity, subject to avoiding areas of highest amenity value.</p> <p>The proposed route has been informed by feedback from the consultation process and further technical input.</p> <p>Currie Substation is the only viable connection option at this present time, other substations are at capacity and would require to be extended to facilitate this connection. SP Energy Networks is a regulated business, regulated by the government's Office of Gas and Electricity Markets (OFGEM). SP Energy Networks as a regulated business has a licence obligation to deliver the most economic and efficient solution as any infrastructure costs will have a direct impact on electricity bill payers. This however is balanced with our requirements under the Electricity Act 1989.</p> <p>The SPEN document Approach to Routeing and Environmental Impact Assessment explains the process that is undertaken to identify and appraise potential areas for overhead lines and the stage at which undergrounding is considered as an alternative, and reflects adherence to SPEN's Schedule 9 requirements.</p> <p>SPT is committed to working with the UK Government and the regulator, Ofgem, to find positive solutions to delivering community benefits on new transmission schemes. The UK Government and Ofgem are currently deciding on the wider approach to community benefits and SPT is feeding into this, alongside other transmission operators and the rest of the electricity industry in order to shape the approach over the coming months. We are working to support the Government to publish community benefit guidance as soon as possible in 2024.</p> <p>SPEN is committed to achieving Biodiversity Net Gain (BNG) across all of its projects at a Business-wide level and "contribute to the enhancement of biodiversity, including where relevant, restoring degraded habitats and building and strengthening nature networks and the connections between them" (NPF4).</p> |

**Appendix E**  
 Summary of Consultation Feedback from Routeing Stage

Cloich Forest Wind Farm Connection Project  
 December 2024

| Summary of Comments Received from Consultees  | Response  |
|---|---|
| <ul style="list-style-type: none"> <li>■ Question raised regarding the adverse impacts of the proposed development on the community and what proposals SPEN may have to compensate the community in relation to that impact?</li> </ul>   | <p>We believe mitigation must be related to reducing the direct and indirect effects that may result from developing the project, and we recognise that such mitigation can have wider benefits to the communities that may potentially be affected by the project. Such schemes might include mitigation corridors designed to bring wider benefits to landscape and visual amenity, and which promote green places and active travel networks e.g. landscape planting/reinforcement and improving biodiversity in a particular area, or the provision of local paths and cycle ways.</p> <p>Our experience of delivering this type of mitigation recognises that, in order to achieve the most effective results, such proposals are best developed in partnership with local communities, landowners and relevant agencies. We are keen to work in partnership to develop and progress such proposals in parallel with the project design.</p> |
| <p><b>BT Radio</b></p> <p>The Project indicated could possibly cause interference to BT’s current and presently planned radio network.</p> <p>Requested grid-references of all the proposed structures of height between the points high-lighted in broken red-line below on the screen grabs for assessment.</p> <p>Option 1A is the most likely if any, to cause interference.</p>  | <p>Grid-references of pole locations will be shared with BT radio once an alignment has been identified through detailed design.</p>  |
| <p><b>RAF Kirknewton</b></p> <p>Preferred route runs along the A70 next to RAF Kirknewton which may interfere with the approach lanes for a number of runways. Comments forwarded to DIO Safeguarding; recommendation is to object unless the route can be run further South away from the airfield, and meet Airfield Obstacle Limitation Surface requirements.</p> <p>The proposed development will be directly in the approach and departure lanes for Runway 13/31, so the route will need to be placed sufficiently far South to meet safeguarding requirements.</p> | <p>Response noted and consideration will be given to the location and configuration of the runway during detailed alignment to in order to meet safeguarding requirements.</p>  |
| <p><b>Network Rail</b></p>  | <p>Noted, consultation will be undertaken in due course with Network Rail if required.</p>  |

**Appendix E**  
 Summary of Consultation Feedback from Routeing Stage

Cloich Forest Wind Farm Connection Project  
 December 2024

| Summary of Comments Received from Consultees   | Response   |
|--|--|
| <p>Any works over the railway will be subject to further discussion and agreement with Network Rail.</p> <p>All construction works must be undertaken in a safe manner which does not disturb the operation of the neighbouring railway. Developers must be aware of any embankments and supporting structures which are in close proximity to their development.</p> <p>Details of all changes in ground levels, laying of foundations and operation of mechanical plant in proximity to the rail line must be submitted to Network Rail's Asset Protection Engineer for approval prior to works commencing on site.</p>  |  |
| <p><b>Ministry of Defence</b></p> <p>Once further details on the location, height and scale of the proposed overhead line are made available and any associated infrastructure, the MOD wishes to be consulted again so that an assessment can be completed.</p> <p>Elements of the preferred route as provided in <b>Figure 6.1: Preferred Route Option</b> documentation potentially fall within the statutory safeguarding zones surrounding RAF Kirknewton.</p> <p>Further concern with the creation of new habitats, such as open bodies of water, SuDS/ Drainage, plans for stripping soil and landscaping strategies may attract and support populations of large and, or flocking birds close to an aerodrome, which could contribute to an increase in birdstrike risk to aircraft at RAF Kirknewton.</p> | <p>Noted, consultation will be undertaken in due course with the Ministry of Defence as requested.</p> <p>Ornithology surveys are also currently ongoing, and will inform the location of the pole siting, and any required mitigation measures. The findings of the ornithology surveys will be set out in the EIA Report, Ornithology Chapter.</p>   |
| <b>Summary of Public Comments</b>  |  |
| <b>West Linton and Carlops Community Development Trust</b>   |  |
| <p>Awaiting government response to the Nick Winser Report re community benefit payments.</p> <p>The Trust would be interested in engaging with SPEN on Biodiversity Net Gain (BNG) projects. The Trust is preparing a Community Plan to determine priorities, but biodiversity and green space projects will feature prominently. By</p>   | <p>SPT is committed to working with the UK Government and the regulator, Ofgem, to find positive solutions to delivering community benefits on new transmission schemes. The UK Government and Ofgem are currently deciding on the wider approach to community benefits and SPT is feeding into this, alongside other transmission operators and the rest of the electricity industry in order to shape the approach over the coming months. We are working to support the Government to publish community benefit guidance as soon as possible in 2024.</p> |

**Appendix E**  
 Summary of Consultation Feedback from Routeing Stage

Cloich Forest Wind Farm Connection Project  
 December 2024

| Summary of Comments Received from Consultees   | Response  |
|--|---|
| <p>the turn of the year the Trust expect to be in a position to be identifying specific projects, which could work well in SPEN's BNG portfolio.</p> <p>Plan will also provide opportunities for landowners to engage with BNG delivery.</p>   | <p>SPEN is keen to engage with the Trust and further consideration will be given to how this can be achieved.</p>   |
| <p>What is the proposed temporary and permanent route to the WF for construction access/ permanent access?</p>   | <p>Full details of the accesses and methods/types of construction will be provided in the EIA Report and have yet to be determined.</p>   |
| <p>Two High Voltage routes from the Currie Substation to the North of and very close to Currievale already exist.</p> <p>Explanation required as to why the wind farm has to connect directly to the Substation at Currie (approximately 25 miles) and not directly in to the National Grid at the nearest point or a closer Substation (e.g. suggest substation at Kaimes)?</p> | <p>Currie Substation is the only viable connection option at this present time, other substations are at capacity and would require to be extended to facilitate this connection. SP Energy Networks is a regulated business, regulated by the government's Office of Gas and Electricity Markets (OFGEM). SP Energy Networks as a regulated business has a licence obligation to deliver the most economic and efficient solution as any infrastructure costs will have a direct impact on electricity bill payers. This however is balanced with our requirements under the Electricity Act 1989.</p> |
| <p>Concerns raised with the proximity of more proposed powerlines to housing, additional to the existing substation in Currie.</p>   | <p>SPEN recognise that the visual impact of an overhead line may be an issue for many local communities and individuals and our approach is to maximise the distance of the final route from properties wherever possible, including the principal views from properties. Individual properties have been mapped and considered during the routeing process and residential visual amenity impact has been mitigated through micro-sitting of individual poles where possible.</p>  |
| <p>Leaflet sent out was helpful in providing early sight of the preferred route, the map provided could not give a precise detailed route due to the length of the preferred route.</p> <p>Request for a more precise map of the preferred route from Balerno to the Currie Substation, so a proper assessment can be made of any adverse impact to this area.</p>               | <p>Digital maps were and are available online on the Project website at: <a href="https://www.spenergynetworks.co.uk/pages/cloich.aspx">https://www.spenergynetworks.co.uk/pages/cloich.aspx</a> which provide opportunities to zoom into the map and obtain more detailed.</p>   |
| <p><b>Friends of the Pentlands (official response and members comments)</b></p>  |   |
| <p><b>Formal comments from Friends of the Pentlands Charity (SCO35514)</b></p> <p>Regard should be had to the following during alignment:</p> <p>(a) Section 1d - the visual impact and need for sensitivity where the line will cross the Pentland Way in the general area of Fernihaugh. For further</p>   | <p>Regard will be given to the points raised and considered further during the detailed alignment stage, including locating the poles on lower land to minimise impacts on views from the higher peaks. Impacts will be assessed under specific topic specialist chapters. In particular, any potential impacts on the Covenanters Grave, the bronze age cairns, the Dunsyre Hill cultivation terraces and Little Sparta will be considered in</p>  |

**Appendix E**  
 Summary of Consultation Feedback from Routeing Stage

Cloich Forest Wind Farm Connection Project  
 December 2024

| Summary of Comments Received from Consultees  | Response  |
|---|---|
| <p>information on the Pentland Way please see:<br/> <a href="https://pentlandfriends.org.uk/the-pentland-way/">https://pentlandfriends.org.uk/the-pentland-way/</a></p> <p>(b) Section 1b - the visual impact from the Covenanters Grave towards Ayrshire. The grave marks the resting place of a covenanter who had fled into the hills, trying to return home to Ayrshire after the battle of Rullion Green in Penicuik. The covenanter asked to be buried within sight of the Ayrshire hills, so he was buried near the summit of Black Law. This is a remote but beautiful spot. Any intrusion into those sightlines will be noticed.</p> <p>(c) The visual impact on the view of the historic Dunsyre Hill cultivation terraces particularly when viewed from the east.</p> <p>(d) Visual impact in relation to the Bronze Age Cairns to the south and east of North Muir.</p> <p>(e) The need for sensitivity in the area of the memorial to James Cumming M.C. which lies on the west lower slopes of Black Law [GR NT074519].</p> <p>(f) Sections 1b and 1d - visual impact on Little Sparta at Stoneypath, in relation to the cultural politics of Ian Hamilton Finlay. Little Sparta was once described by the critic Duncan Macmillan as the greatest Scottish artwork of the 20th century.</p> <p>Comments are submitted on the assumptions 1) that the Cloich Forest wind farm will receive final approval, and 2) that the selected route for the power line should lead to Currie rather than alternative substations such as Dun Law or Galashiels. On these assumptions, support is given to the preferred route subject to the caveats above.</p> | <p>the heritage chapter of the EIA Report, and landscape and visual impacts will be assessed in the landscape and visual impact assessment chapter.</p> <p>Where members attended in person, verbal feedback was also provided in discussion with SPEN and LUC's environment team.</p> <p>The SPEN document Approach to Routeing and Environmental Impact Assessment explains the process that is undertaken to identify and appraise potential areas for overhead lines and the stage at which undergrounding is considered as an alternative, and reflects adherence to SPEN's Schedule 9 requirements.</p> |
| <p><b>Other comments raised by members of the Friends of the Pentlands in attendance to the consultation events:</b></p> <ul style="list-style-type: none"> <li>■ The Pentland Way long distance walking route from Dunsyre to Swanston is within route option 1D by Garvald, and highlighted as a historically sensitive area. The Proposed Development would likely pass by the route perpendicularly.</li> <li>■ Concern about views from Little Sparta (Gardens and Designed Landscapes), where the visual relationship between the artwork and surrounding landscape is a vital part of experiencing the garden. The</li> </ul>  |   |

**Appendix E**  
 Summary of Consultation Feedback from Routeing Stage

Cloich Forest Wind Farm Connection Project  
 December 2024

| Summary of Comments Received from Consultees   | Response   |
|--|--|
| <p>garden is not within the preferred route. It is located between the garden and route corridor is Mid Hill (AOD 412) and Bleak Law (AOD 445).</p> <ul style="list-style-type: none"> <li>■ Dunsyre is home to medieval cultivation terraces which appear to be home to a scheduled monument and a number of non-designated heritage assets. The views of these from the north were of particular sensitive value, and VPs to the north (on Mid-Hill near Fernihaugh, outside the route option) should be assessed.</li> <li>■ Visual impact on the Pentlands Way as it crosses past Fernihaugh; crosses an old stone bridge at Garvald Burn, and follows an old road that winds past the LNCS (and over a tributary of the Medwin) and heads northwards towards the battlefield (map of the Pentlands with the Pentlands Way and other PRoW's was provided).</li> <li>■ Slipperfield PRoW was also highlighted as a common waymarked walking route.</li> </ul> |  |
| <b>Landscape and Visual</b>  |  |
| <p>The current route crosses the Peatland hills via the Mendick and the North Muir. This route should be changed because:</p> <ul style="list-style-type: none"> <li>■ It crosses the Leatlan way in an unfavourable configuration.</li> <li>■ It part spoils a walk that has been called one of the finest in the UK.</li> <li>■ The area to be crossed is a rare and densely populated area for ground nesting birds (curlews etc).</li> <li>■ This area has been considered to become a National Park.</li> </ul>   | <p>Through detailed routeing and 'pole-spotting' (i.e. planning out the location of each wood pole along the route) consideration will be given to the surrounding landscape and how the OHL will be viewed within the landscape, including from locations within and towards the Pentland Hills, and from around the settlements of West Linton and Romannobridge.</p> <p>Where practicable, routeing will utilise the existing landform and features within the landscape to mask or screen the OHL and reduce its prominence. This may be by siting poles on utilising lower elevations to reduce their height and prevent them dominating a skyline, or by routeing along woodland edges to provide a backcloth or screen the OHL from some viewpoints. Routeing will follow industry guidelines, namely the 'Holford Rules' which set out principles for protecting the amenity of local communities.</p> |
| <p>The scenery is beautiful in West Linton and in surrounding areas. Disheartened by the eyesore of the windfarm and the combined impact of the overhead lines now needing to connect it to the substation.</p>  |  |
| <p>Route Option 1F would potentially impact the landscape looking south west from the Drovers Road at Romanno particularly when coming down from Drum Maw.</p>   | <p>During the routeing process all statutory and non-statutory environmental sites are taken into consideration so that they can be avoided by potential route options as outlined within the Routeing and Consultation Document.</p>  |

**Appendix E**  
 Summary of Consultation Feedback from Routeing Stage

Cloich Forest Wind Farm Connection Project  
 December 2024

| Summary of Comments Received from Consultees  | Response  |
|---|---|
| <p>When driving south along the A701 from Lamancha, past the Macbiehill junction to the A701, the Southern Upland Valley views come into a new perspective (driving south past Whitmuir). Views of the Broughton Heights, Black Mount and as far away as Tinto Hill best appreciated at the driveway to Macbieknowe.</p> <p>Down from the hills at the Drovers' Road a stunning series of large vistas are visible that cannot be seen from the road. The views are of an ancient landscape.</p> <p>The report mentions using sensitivity in siting OHLs, but between Romanno Mains and Dovecot Farms the ground is largely open and integral to the view. Can detail be provided as to whether this specific area will be avoided?</p> |   |
| <p>The public are supportive of the need for renewable power and the proposed location of the wind farm. However, locals visiting the area near White Craig hill more frequently worry about the impact of building work, infrastructure installation and poles on the landscape.</p>   | <p>Routeing will utilise the existing landform and features within the landscape to help mask or screen the OHL and reduce its prominence. From the elevated summit of White Craig Hill, the preferred route is likely to be seen, backclothed by landform and/or trees. The design will seek to maximise screening and backclothing opportunities to minimise prominence within the landscape.</p>             |
| <p>Proposed route is in a designated area but it will have a detrimental effect on the landscape and views of the Upper Tweeddale Scenic Area bordering on it. It will also be visible from the Pentland Hills Special Landscape Area.</p>  | <p>Effects on the Pentland Hills SLA will be considered as part of the landscape and visual impact assessment. The Upper Tweeddale National Scenic Area (NSA) is located over 5km from the closest part of the preferred route. Given the height of the proposed poles (height of the wood poles is 11 to 16m), it is not considered that the special qualities of the NSA would be significantly affected.</p> |
| <p>The route crosses some beautiful and peaceful but accessible areas of the Southern Pentlands that are visited regularly for this reason.</p> <p>Routeing south-west would cross a narrower band of smaller hills between existing roads which is largely unvisited and holds little value in terms of recreation and nature being largely flat and pathless moorland.</p> <p>Crossing from OS grid ref 055480 to 030530 suggested as a route which would be straight forward and likely to be met with little resistance.</p>  | <p>The preferred route has sought to take the most direct line, in accordance with Rule 7 of the Holford Rules which states "<i>Other things being equal, choose the most direct line...</i>". Routeing further south between OS grid reference 055480 and 030530 would increase the overall length of the route.</p>   |
| <p>Consideration to be given to individual people and the impact it will cause. Concerns that the overhead lines will detract from the beautiful views from nearby properties and will consequently decrease the value of properties.</p>   | <p>The design of the preferred route to date has considered residential properties as a constraint. The preferred route has been designed with enough flexibility to maintain at least a 100m buffer from residential properties when finalising the alignment.</p>   |

**Appendix E**  
 Summary of Consultation Feedback from Routeing Stage

Cloich Forest Wind Farm Connection Project  
 December 2024

| Summary of Comments Received from Consultees  | Response  |
|---|---|
| <p>Residents are also concerned with the hindrance the installation and maintenance will cause to neighbours.</p>   |   |
| <p>The Pentlands should be considered a single ecosystem, with the Pentland Hills Regional Park constituting only part of that ecosystem. Whilst developments to the north of the regional park are noted (e.g. planting of new mixed and broadleaved woodlands, parts of the north-east Pentlands); the Pentlands are over-used by walkers, dog-walkers and mountain-bikers. There are signs of ecological decline, notably affecting many species of upland bird, and paths are degraded by over-use.</p> <p>In contrast, the south-west Pentlands is more akin to a natural or wild land reservoir. There are strong arguments, cultural as well as natural, for seeking to minimise its impact. One reason for the current proposed route is to minimise the need for new track construction: this goal is to be applauded.</p> <p>Government policy recognise the health benefits (and hence the economic benefits) of 'reconnecting with nature': the south-west Pentlands are an important resource for this purpose. Nearest area to Edinburgh where it is possible to walk for hours meeting few other people. This sense of connection with nature is important and should be preserved as far as possible.</p> | <p>The preferred route has sought to cross the Pentland Hills in the south-west as this is a narrower section of the hill range and has fewer visual receptors compared to the north-east. Routeing will seek to utilise the existing landform and features within the landscape to help reduce the prominence of the OHL. For example, it could utilise the landform of Black Law and Bleak law to provide backclothing.</p>   |
| <p>To avoid crossing the Pentland Hills, suggest routeing by the Blyth Bridge, Dolphinton Road, and crossing diagonally over an old quarry to the Dolphinton Dunsye road, straight on at the quarry near the Gonrald Road, along the old railway line and on to the moor towards Black Mount.</p>   | <p>The preferred route for the 132kV connection was determined in accordance with the overarching project routeing strategy, reflecting the findings of the landscape and visual appraisal, including residential amenity, subject to avoiding areas of highest amenity value. The preferred route has sought to take the most direct line, in accordance with Rule 7 of the Holford Rules which states "<i>Other things being equal, choose the most direct line,..</i>". Routeing further south would increase the overall length of the route. The proposed route has been informed by feedback from the consultation process and further technical input.</p> |
| <p><b>Ecology and Biodiversity</b></p>  |   |
| <p>Several birds are noted in the area near Lamancha – ravens, goshawks, osprey, geese and swans.</p>   | <p>A suite of ornithological surveys are being undertaken over two years to understand the presence and distribution of birds in the landscape, including the named species in addition to other sensitive birds. Data collecting during both desk and field surveys will inform the route, design and options for mitigation of the Proposed Development. The</p>  |



**Appendix E**  
 Summary of Consultation Feedback from Routeing Stage

Cloich Forest Wind Farm Connection Project  
 December 2024

| Summary of Comments Received from Consultees   | Response  |
|--|---|
|  | survey methods and results as well as impact assessment will be detailed within the Ornithology Chapter of the EIA Report.  |
| Voles, Pheasants and foxes are often spotted near Damside.   | A suite of desk and field based ecological surveys will be undertaken to understand the potential impacts of this Proposed Development on ecological features including designated sites and protected and notable species. Data collecting during both desk and field surveys will inform the route, design and options for mitigation of the Proposed Development. The survey methods and results as well as impact assessment will be detailed within the Ecology Chapter of the EIA Report. |
| Concerns raised about going near / over a SSSI.  |   |
| Paper distributed providing information on the changes in diversity of soil-inhabiting fungi in first-rotation stands of Sitka spruce. Advised that recognition should be given about the conservation value of Sitka, both above and below ground as habitat for our native creatures, and although they are technically an alien species, they are de facto naturalised and much better suited to our conditions than Norway Spruce (also non-native). They also represent a step-up from the sterile sheep pastures they were planted on. | Further work is still to be undertaken including technical and environmental surveys and assessment. Information from the latest research and good practice guidance will inform all stage of the Proposed Development as well as options for mitigating its impacts. The preferred route option will aim to find a route that follows the mitigation hierarchy to avoid impacts to woodland, and where this is not possible the route will seek to minimise impacts to woodland.               |
| <b>Residential and Land Use</b>  |   |
| Concerns raised with the route crossing onto land north of A70 near Ainville, advising it would be best situated south of Ainville Farm, below the A70, running parallel to Ainville Burn.   | More detailed planning issues and constraints will be discussed with landowners on an individual basis as part of the detailed alignment process.   |
| Route seems logical as long as no residential properties are impacted. OHL should follow existing infrastructure as it would lessen the impacts for properties along the route. Deviation through people's grounds is likely to result in strong objection.  | We recognise that the presence of an OHL near communities can impact the visual amenity of the area and our approach is to maximise the distance of the final route from properties wherever possible, including the principal views from properties.   |
| Undergrounding of cables near Currie substation welcomed. However, concerns raised that more cables located underground here could result in other health implications.  | SPEN has dedicated EMF resources to assist the public and to provide further information, including, if appropriate, home visits and measurement of electric and magnetic fields. Copies of the leaflet "EMFs – the facts" were available at the public consultation events. Stakeholders are also directed to the website <a href="http://www.emfs.info">www.emfs.info</a> for further information.  |

**Appendix E**  
 Summary of Consultation Feedback from Routeing Stage

Cloich Forest Wind Farm Connection Project  
 December 2024

| Summary of Comments Received from Consultees   | Response  |
|--|---|
| <p>Existing overhead line (trident) running though Romannobridge up through the field north-east of Hamilton Hall and neighbouring properties. Hopes the proposed OHL can either piggy-back on to the existing infrastructure or follow a similar route to avoid disruption elsewhere.</p> | <p>This is a connection for a single wind farm and it would not be possible for other developments to connect to this circuit, or to connect into other lines as they are used to serve other developments at this present time, and are at capacity.</p> <p>Currie Substation is the only viable connection option at this present time, other substations are at capacity and would require to be extended to facilitate this connection. SP Energy Networks is a regulated business, regulated by the government's Office of Gas and Electricity Markets (OFGEM). SP Energy Networks as a regulated business has a licence obligation to deliver the most economic and efficient solution as any infrastructure costs will have a direct impact on electricity bill payers. This however is balanced with our requirements under the Electricity Act 1989.</p> |
| <p>Request preference to site poles along the edge of fields rather than through the field as it disrupts agricultural activity and makes it more complicated to plough, sow and harvest.</p>  | <p>Proposals are still at an early stage, and in identifying the preferred corridor, areas of high environmental value have been avoided as best possible.</p> <p>More detailed planning issues and constraints will be discussed with landowners on an individual basis as part of the detailed alignment process.</p>   |
| <p>Consideration should to be given to avoiding impacts on Halmyre Mains Cottages.</p>   |   |
| <p>Ineos pipeline goes through the SW extents of field near Cannot Farm.</p>   |   |
| <p>Riccarton Garden Centre is already affected by overhead power lines. Any proposals for additional overhead or underground power lines would further compromise this land.</p>   |   |
| <p>Outbuildings noted to east of properties at Crosswoodhill help screen views. Preference to site further NE in corridor as the landform limits the visibility to the Crosswoodhill properties.</p>   |   |
| <p>Concerns raised about the amenity impacts on two care homes at Garvald.</p>   | <p>The Preferred Route has been reviewed ahead of Scoping to establish whether effects can be minimised through more detailed routeing. In recognition of the sensitivities raised by the local community in Garvald, the Preferred Route has been narrowed to avoid the potential for direct impacts on the two homes providing support services in Garvald.</p>   |
| <p>Routeing further south of Fernihaugh advised (closer to the former gravel quarry), and encouraged the use of the former disused railway line to route</p>   |   |

**Appendix E**  
 Summary of Consultation Feedback from Routeing Stage

Cloich Forest Wind Farm Connection Project  
 December 2024

| Summary of Comments Received from Consultees   | Response  |
|--|---|
| <p>along instead. Suggested going across Mendick Hills instead of through Fernihaugh.</p>  | <p>Proposals are still at an early stage, and in identifying the preferred corridor, areas of high environmental value have been avoided as best possible.</p>  |
| <p>Footpath noted north of the Currievale properties, with existing vegetation providing screening between the houses and the railway line. Vegetation will provide a greater opportunity to mitigate the visual impact of the Proposed Development as it matures. Can pole numbers be reduced, or if distance between poles altered, to fit in better with existing vegetation?</p> <p>Siting the OHL further down the slope, on lower elevation, should be considered as might be the least visually prominent.</p>  | <p>More detailed planning issues and constraints will be discussed with landowners on an individual basis as part of the detailed alignment process.</p>  |
| <p>Views from Currievale properties north, including views over Fife and 3 bridges, may be disturbed as a result of the Proposed Development</p>   |   |
| <p>The preferred route for the connection to the Currie Substation has the potential to compromise or constrain the future development of housing development between Currievale and the railway line. Undergrounding could be considered here.</p>  |   |
| <p>The Proposed Development would impact Halmyre's landscape, character, and special qualities. Proposed route is not within a designated area but will have a detrimental effect on the landscape and views of the Upper Tweeddale Scenic Area bordering on it. Area also visible from the Pentland Hills Special Landscape Area.</p> <p>The gentle hills follow the alignment of the Southern Upland Fault which marks an important cross-country route. A series of springs also follow the Fault Line from which supply many of the Private Water Supplies (PWS) to nearby households and farmsteads. Landowners are legally obliged to not interfere with PWS and protect them.</p> <p>Land near Halmyre is of Historic and Archaeological value:</p> <ul style="list-style-type: none"> <li>■ Two Listed homes noted at the Halmyre House Estate, with views of the proposed substation and the 132 kV overhead line and poles.</li> <li>■ Halmyre House is a listed building; it is an old Peel Tower built in the 1600's to guard against the Border Reivers.</li> </ul> | <p>Through detailed routeing and 'pole-spotting' (i.e. planning out the location of each wood pole along the route) consideration will be given to the surrounding landscape and how the OHL will be viewed within the landscape. Routeing will utilise the existing landform and features within the landscape to help mask or screen the OHL and reduce its prominence. This may be by siting poles on utilising lower elevations to reduce their height and prevent them dominating a skyline, or by routeing along woodland edges to provide a backcloth or screen the OHL from some viewpoints. Routeing will follow industry guidelines, namely the 'Holford Rules' which set out principles for protecting the amenity of local communities.</p> |

**Appendix E**  
 Summary of Consultation Feedback from Routeing Stage

Cloich Forest Wind Farm Connection Project  
 December 2024

| Summary of Comments Received from Consultees  | Response   |
|---|--|
| <ul style="list-style-type: none"> <li>The historic Cross Borders Drove Road runs through and along part of the Preferred Route potentially impacting recreational amenity for residents and visitors.</li> </ul>   |  |
| <p>The route shown is too wide and vague. Concern on visual on tourist routes to Edinburgh.</p>   | <p>The purpose of the routeing phase is to identify a preferred corridor for the overhead line, which presents the best opportunity for a route that is both technically feasible and economic viable, with the least disturbance to the environment and to people.</p>  |
| <p>Land near Currievale is productive farmland, with a wealth of diverse wildlife, and prefer undergrounding.</p>   | <p>Noted. The footprint of the OHL is considerably smaller compared to that of undergrounding a cable, and results in less direct impacts on the ground. Underground can often result in sterilising a strip of land for the duration of the Proposed Development to ensure it is accessible for maintenance and repairs. Undergrounding will be considered where environmentally and technically appropriate.</p> |
| <p>Nearby trainline could be developed in the future to cater for the population in this area. Hopeful that a bicycle path will be developed to run alongside the train line.</p>   | <p>Infrastructure upgrades and developments in planning will be considered at the time of preparing the consent application, and will inform the detailed design in consultation with the relevant landowners.</p>   |
| <p><b>Hydrology</b></p>   |  |
| <p>30 acres near Damside is considered unsuitable due to its frequent flooding and lack of suitable access for construction and maintenance.</p> <p>Damside floods c. 4-5 times a year, with up to 3ft of water between the Dead Burn and the River Lynn. Water table is high (c. 3ft deep).</p> <p>Land here is also contaminated where it floods due to sewage pumped into the River Lynn during times of high-water flow. Farmer had to give up sheep rearing due to pollution.</p> <p>Access to Damside fields in dry weather is by an old stone bridge and unsuitable for heavy equipment etc. There is limited access to this land except through a private access track.</p> | <p>The constraint information is appreciated, and will be taken into consideration during the detailed alignment stage.</p> <p>A hydrology, hydrogeology and peat survey will be undertaken across the proposed route to inform detailed alignment; the details of which will be set out in the EIA/Environmental Appraisal.</p>   |
| <p>The Lyne Valley is prone to flooding in the Romannobridge area and it is frequently flooded at the junction of the B7059 with the A701 with water from the hills.</p>  |  |
| <p>Boggy land noted NW of A701.</p>   |  |

**Appendix E**  
 Summary of Consultation Feedback from Routeing Stage

Cloich Forest Wind Farm Connection Project  
 December 2024

| Summary of Comments Received from Consultees  | Response   |
|---|--|
| Private water supplies noted on the slopes of Wether Law in south.  |  |
| Land north of the existing Cala Homes development (within the future development plot) as far as Gowanhill is sloped and floods regularly on the approach to the railway line.  |  |
| <b>Forestry and Woodland</b>  |  |
| <p>Cairas Plantation (2018 forestry plantation) noted an existing low voltage line which has an unplanted grazing strip underneath on the north side of A70. The new line would need to be separated from this by 30m.</p> <p>On the south side of A70 planting was restricted due to a section of deep peat that was therefore unused for forestry or grazing. If suitable for the new OHL it would be best for the owner and have least impact.</p>   | <p>Forestry and watercourses have formed key routeing considerations and have been avoided where possible to date.</p> <p>Following initial discussions with landowners, further dialogue and ground truthing surveys to establish existing and proposed planting, and the detailed alignment stage will look to avoid impacts on forestry as best practicable.</p>  |
| Avoid the Whitelea Plantation on the northside of the A70. If possible, keep the electricity pole close to the A70 road.  | <p>SPEN acknowledges the requirements of Scottish Forestry guidance on Design Techniques for Forest Management Planning: Practice Guide<sup>4</sup>. Where appropriate, and in line with relevant electrical and forest management safety guidance, consideration should also be given to the management of woodland edges for biodiversity and wildlife e.g., wildlife bridges.</p>                             |
| 300 acres of woodland have been planted near Cloich Wind Farm. Landowners keen this is not affected by the new line as it will sterilise a large swathe of the trees.   | <p>Consideration is also given to the Scottish Government's Control of Woodland Removal Policy<sup>5</sup> which requires that woodland removal should be kept to a minimum and that it should be replanted if felled. The policy only supports woodland removal where it would achieve significant and clearly defined public benefits. In most cases, compensatory planting may form part of this balance.</p> |
| <p>Bypassing Grassfield Forest is recommended to avoid deforestation of native broadleaf areas and ensure their long-term retention. The same would apply for underground options.</p> <p>Grassfield Forest layout provides opportunities to direct the powerlines around the edge of the forest. These routes cross a higher percentage of open land with reduced impact on the trees and the viability of the forest, and greatly reduced burden on title. Also avoids splitting the forest up, which is a particularly important for areas of ancient and native broadleaf woodland.</p> |  |

<sup>4</sup> Forestry Commission (2014) Design Techniques for Forest Management Planning: Practice Guide. Available [online] at: [https://assets.publishing.service.gov.uk/government/uploads/system/uploads/attachment\\_data/file/689922/Design\\_techniques\\_for\\_forest\\_management\\_planning.pdf](https://assets.publishing.service.gov.uk/government/uploads/system/uploads/attachment_data/file/689922/Design_techniques_for_forest_management_planning.pdf)

<sup>5</sup> Forestry Commission Scotland (2009) The Scottish Government's Policy on Control of Woodland Removal. Available [online] at: <https://forestry.gov.scot/publications/285-the-scottish-government-s-policy-on-control-of-woodland-removal/viewdocument/285>

**Appendix E**  
 Summary of Consultation Feedback from Routeing Stage

Cloich Forest Wind Farm Connection Project  
 December 2024

| Summary of Comments Received from Consultees   | Response |
|--|----------|
| <p>Routes should seek to avoid coupes where felling would lead to potential wind-throw of the coupe.</p> <p>Such routes would still be within the boundaries of the preferred corridor, and possibly be simpler routes to construct as they would impact fewer landowners. Discussion will remain open for a modified route with a lower impact on Grassfield East Forest.</p>   |          |
| <p>No available open ground areas for compensation planting of loss of trees under current long-term forestry plans. Two forest owners in across this route already face difficulties, and do not want the powerline affecting their assets.</p> <p>The loss of the crops would also be designated as deforestation under our UKWAS (Certification Scheme), and whilst compensatory planting would mitigate SPENS responsibilities, this would occur elsewhere as there is no opportunity for planting within the forest.</p>  |          |
| <p>In line with relevant electrical and forest management safety guidance, consideration should be given to the management of woodland edges for biodiversity and wildlife e.g., wildlife bridges where appropriate.</p>   |          |
| <p>Need to consider the destruction of native broadleaf areas, the removal of nesting boxes during nesting season, the loss of productive forest land, fire risk implications regarding any potential transformers.</p>  |          |
| <p>A route through the centre of a forest places an unworkable burden on the access to the stands in terms of haulage routes and stacking/loading areas.</p> <p>The current road network, where produce for haulage is stacked, is likely to fall within the safety zones of the lines and therefore new roads and stacking points would need to be constructed to facilitate safe haulage. This would further compromise the retained area of commercial conifer as the new road network would need to be built in the crop.</p> <p>The proposed route could compromise the stability of some crops beyond the wayleave edge. The creation of unstable brown edges to stands that would be susceptible to windthrow, would necessitate clearance back to stable edges and restocking of the crops back to the edge of the new wayleave.</p> |          |

**Appendix E**  
 Summary of Consultation Feedback from Routeing Stage

Cloich Forest Wind Farm Connection Project  
 December 2024

| Summary of Comments Received from Consultees  | Response   |
|---|--|
| <p>The wayleave is therefore likely to compromise the makeup of the forest species as laid out in the Long Term Forest Plan agreed with Scottish forestry, and the management requirements as laid out under UKWAS (UK Woodland Assurance Scheme) and UKFS (UK Forestry Standard).</p>  |  |
| <p>Potential impacts raised with respect to the on construction and ongoing maintenance of Camilty Wind Farm.</p> <p>Main components for Camilty would be transported along the A70 and a portion of the transport route is included in the proposed route for the Cloich OHL connection. The proposed OHL route also passes both of the main site access points on the A70, so obstruction concerns have been raised to deliveries due to either the positioning of the OHL poles or the construction works themselves.</p> <p>Following completion of construction at Camilty Wind Farm, continued access will be required for maintenance and occasional replacement of major components. Requested the Wind Farm are consulted with regarding the precise positioning of the OHL along the A70 near Camilty Plantation, as well as on the timing of the construction works.</p> | <p>Regard will be given to the points raised and considered further during the detailed alignment stage. Traffic and transport will also be considered during the EIA and an outline TMP will be included in the EIA.</p> <p>Planning issues will be discussed with landowners on an individual basis to minimise disruption and ensure access to the wind farm is not impacted as a result of the Proposed Development.</p> |
| <p>Where there is no alternative route, an OHL through a woodland/forested area should:</p> <ul style="list-style-type: none"> <li>■ Avoid the line of sight of important views;</li> <li>■ Be kept in valleys and depressions;</li> <li>■ Not divide a hill by crossing over a summit;</li> <li>■ Cross skyline or ridges where they drop to a low point;</li> <li>■ Follow alignments which are parallel to or diagonal to the contour as far as possible (avoiding cutting across contours at a perpendicular); and</li> </ul> <p>Vary in the alignment to reflect the landform by rising in hollows and descending on ridges.</p>   |  |
| <p><b>Traffic, Transport and Construction</b></p>   |  |

**Appendix E**  
 Summary of Consultation Feedback from Routeing Stage

Cloich Forest Wind Farm Connection Project  
 December 2024

| Summary of Comments Received from Consultees  | Response  |
|---|---|
| Concerns raised regarding traffic disruption on Riccarton Mains Road, as the substation is located on one of the main routes out of Currie.   | Temporary accesses to all pole locations will be taken from the existing main road network wherever feasible, with the use of selected unclassified roads also likely to be required. The use of existing tracks and watercourse crossings will be maximised, with the upgrading of these where necessary.  |
| Will the new OHL bypass Lamancha? What is the proposed temporary and permanent route to the WF for construction access/ permanent access?   | The use of temporary stone tracks is normally minimal for wood pole connections. All temporary tracks will be removed after commissioning with land being restored to its former condition.   |
| Construction effects were the primary concern of several Currie/ Balerno residents.   | At this stage, a detailed alignment and location of temporary infrastructure has not yet been decided. A second round of consultation will be undertaken once the detailed design has progressed.   |
| It was noted that Cala Homes were proposing a Balerno Bypass as part of their development to reduce construction traffic on the A70, which could facilitate the construction of the OHL.  | Traffic and transport will also be considered during the EIA and an outline Transport Management Plan (TMP) will be included in the EIA.  |
| <b>Heritage</b>   |   |
| Concerns about the crossing of roman road in 1D – would try and cross perpendicularly to minimise effects.  | Where possible and practicable, the Proposed Development will seek to cross the roman road perpendicularly as suggested to minimise effects. Detailed consideration will be given to the concerns raised and considered further during the detailed alignment stage.<br><br>Consideration of potentially significant effects on cultural heritage will be included in the relevant EIA Report on cultural heritage assets, including physical effects, setting change and cumulative effects in due course.   |
| Visual amenity and protection of heritage with regard to eradicating, not minimising the lasting and damaging impact proposed. Heritage impacts considered under threat by the use of an overhead power line when it is considered unnecessary by the public given the very suitable alternative of underground cables. | It should be noted that where a number of non-designated assets are recorded, undergrounding may not provide the appropriate solution as number of other direct impacts on heritage assets can best be avoided through an overhead line, and visual impacts limited through careful routeing and wood pole positioning.<br><br>The cultural heritage assessment will be undertaken in line with the Historic Environment Scotland Managing Change in the Historic Environment: Setting guidance note, and will be included in the Cultural Heritage chapter of the EIA Report. The landscape impacts will be considered and assessed within the LVIA Chapter of the EIA Report.<br><br>Further engagement with HES and the Council's archaeology department will also be undertaken post-scoping to establish and mitigate likely impacts on heritage assets. |



**Appendix E**  
 Summary of Consultation Feedback from Routeing Stage

Cloich Forest Wind Farm Connection Project  
 December 2024

| Summary of Comments Received from Consultees   | Response   |
|--|--|
| <p>Roue Option 1F is home to a phenomenal amount of largely uncatalogued pre-iron age sites and hill forts, that are not in the Cloich Forest Wind Farm Connection Project Routeing and Consultation Report. They are largely above the 200 m contour.</p> <p>The distribution density of these is very high when cataloguing them on old OS maps, such as on the following web page (on the 1885 one inch map; <a href="https://www.bordersfhs.org.uk/newlands.html">https://www.bordersfhs.org.uk/newlands.html</a>)</p> <p>Pre-iron age sites located at Roger's Crag, Whiteside, Bordland Rings, Henderland for example within a 3 mile radius circle, not including un-named sites.</p> | <p>Consideration will be given to both designated and non-designated heritage assets, and archaeological potential, as part of the detailed routing assessment within the route corridor. Further engagement with HES and the relevant Councils' archaeology departments will also be undertaken post-scoping to establish and mitigate likely impacts on heritage assets.</p> |
| <p>The Lamancha Stone, a possibly 6000 year old carved stone sits in the National Museum of Scotland as an example of the heritage sourced here.</p>   |  |
| <p><b>Other</b></p>  |  |
| <p>Residents near Mountaincross noted:</p> <ul style="list-style-type: none"> <li>■ Ethylene pipeline runs through Preferred Route Option 1 corridor</li> <li>■ Pipeline crosses Talla Main (main water supply for Edinburgh), at point north of Mountaincross</li> <li>■ Talla main – 8ft deep, 3ft wide aqueduct. Gravity fed. It is above ground at bend in Boghouse Road – soil mounds</li> <li>■ Tower markers (pillars) on OS map</li> <li>■ Kink/bend in road at Boghouse Road – Talla Main, Ethylene pipe, OHL pole</li> </ul>   | <p>Detailed consideration will be given to the points raised and considered further during the detailed alignment stage.</p>   |
| <p>Given the political nature of energy prices, is the cost of development and amortisation of costs into energy prices in a competitive market not a highly nebulous factor?</p>  | <p>SP Energy Networks is a regulated business, regulated by the government's Office of Gas and Electricity Markets (OFGEM). SP Energy Networks as a regulated business has a licence obligation to deliver the most economic and efficient solution as any</p>   |

**Appendix E**  
 Summary of Consultation Feedback from Routeing Stage

Cloich Forest Wind Farm Connection Project  
 December 2024

| Summary of Comments Received from Consultees   | Response   |
|--|--|
| Is the need for Iberdrola or SPEN to remain competitive a planning competent issue or environmental factor when damage to the Scottish countryside or Scottish heritage is being proposed as is the case here? | infrastructure costs will have a direct impact on electricity bill payers. This however is balanced with our requirements under the Electricity Act 1989.  |
| Does SPEN have any obligations against damaging the environment?   | Under the Electricity Act 1989, SPEN is required to consider technical, economic and environmental matters, and reach a balance between them. This means that the proposed route will be the one, selected after an appraisal of a number of route options, which balances technical feasibility and economic viability with the least disturbance to the environment and to people. The work done to date and contained within the Routeing and Consultation Document, meets our routeing objective.<br><br>To conclude, SPEN has a legal duty to develop and maintain a technically feasible and economically viable transmission and distribution system. SPEN must fulfil this duty by also having due regard to environmental interests including natural and cultural assets and people. |
| Technical factors appear as statements of fact that bear no cost merit when the scenario is one of intrusion and environmental invasion, is that not so?   |  |
| Why do you prioritise profitability over lasting and damaging visual impact?   |  |
| Are the technical considerations not already part of the everyday life of a network company?   | Technical considerations can only be considered in the context of the environmental setting in which they're located. The environmental considerations are the key driver for the location of the Proposed Development, and the technical considerations are reviewed periodically   |
| Hannahfield land likely to be host to the expansion of Ravelrig Quarry (which is currently in scoping).  | Regard will be given to the points raised and considered further during the detailed alignment stage. SPEN will engage with the landowner to understand the plans and constraints on the Site, and developments in planning will be considered as part of the EIA in due course.   |
| The preferred route looks like a long way round, but there are probably reasons for this.  | The Routeing and Consultation Document set out justification for why Route Option 1 has been progressed as the preferred route option for consultation. Routes 3 and 4 were more likely to result in environmental effects, when assessed against the Holford Rules. As a result, these were not taken forward for consultation.   |
| Question raised regarding the long winding nature of the route.  |  |
| Further details of exact pole siting between the A70 and the Water of Leith are sought.  |  |
| Opposition to routes 1 and 2 with a preference for routes 3 or 4.  |  |
| <b>Consultation Event</b>  |  |
| Whilst it was helpful to attend the exhibition, many questions could not be answered as they were deemed to be determined by the engineers, once the   | SPEN design engineers were present at all three events. Details on the pole siting and alignment are not considered at consultation due to the size of the study area. The   |

**Appendix E**  
 Summary of Consultation Feedback from Routeing Stage

Cloich Forest Wind Farm Connection Project  
 December 2024

| Summary of Comments Received from Consultees  | Response   |
|---|--|
| <p>route has been approved. As a resident, it is difficult to make an informed decision (What impact will the work have on the local residents).</p>  | <p>consultation was focussed on obtaining feedback on the route, and constraints, to then inform detailed alignment.</p>   |
| <p>Exhibition would have benefitted from a presence by an engineer. Residents are aware that it is dependent on the windfarm being approved first but residents are being asked to consider the project as a whole without all the facts.</p>   | <p>A further consultation event will be held in due course once a more detailed route has been established, and further engagement and information will be provided at that stage for comment.</p>   |
| <p>Disappointed that despite the preferred route passing directly through properties on Boggsbank Road, West Linton, the residents received no correspondence about the development. Residents in and around Halmyre found out through word of mouth and a leaflet from the information event.</p>  | <p>SPEN apologise if properties within the route option did not receive leaflets. A third party company were appointed to deliver leaflets to all addresses within the Preferred Route Option, and within 1 km of the Route Option.</p>  |
| <p>We have met some pleasant people. Not convinced that this is a consultation. It might have been better to have the consultation before a preferred route was identified using reads and a wider left hook as a better solution.</p>  | <p>As also noted in Chapter 3 above, adverts for the event were included in the following papers:</p> <ul style="list-style-type: none"> <li>■ C&amp;B news (Currie and Balerno News) – 26<sup>th</sup> April and 31<sup>st</sup> May 2024 publications</li> <li>■ Evening Edinburgh News – Tuesday 14<sup>th</sup> May 2024</li> <li>■ Borders Telegraph – Wednesday 15<sup>th</sup> May 2024</li> <li>■ Peeblesshire News – Friday 10<sup>th</sup> May 2024</li> </ul> |
| <p>Some landowners disappointed to have found out about the consultation only through third party word of mouth rather than through provision of a leaflet.</p>   |  |
| <p>It seems less of a consultation than presentation of a done deal, but if that is not so, could there be made available a complete costing comparison for overhead against underground cabling?</p>   | <p>Information leaflets were also provided at the consultation events, and the consultation period allowed for responses to be provided two weeks after the last consultation event to allow sufficient time for consideration by consultees and members of the public.</p>  |
| <p>Some landowners within the preferred route option did not receive a leaflet, and expect further correspondence to inform them of the consultation. However, responsive to discuss the proposals in more detail, and do not object to the principle of the proposed connection and are keen to work with SPEN on the detailed design to consider routing options that do not compromise or constrain the future development of landowner interests.</p> | <p>A virtual consultation room was prepared and made available during the consultation period (13<sup>th</sup> May 2024-17<sup>th</sup> June 2024).</p>  |
| <p>Concerned regarding the process and timescales for the consultation. Informed less than one month before the deadline for comment on the proposed route. Some discussions with other landowners in the Pentland Hills have been ongoing for up to 2 years. Details of the proposed route have been influenced by these early engagement owners and have limited the scope for changes to the route through some property.</p>                          |  |

**Appendix E**  
 Summary of Consultation Feedback from Routeing Stage

Cloich Forest Wind Farm Connection Project  
 December 2024

| Summary of Comments Received from Consultees   | Response   |
|--|--|
| <p>Whilst three dates were offered, an virtual consultation would have been preferred as unable to attend in person.</p>   | <p>SPEN and LUC are grateful for the positive feedback, and will continue to positively engage with consultees and the public on the Proposed Development.</p> |
| <p>Notification of the consultation were considered 'hit &amp; miss' and many who might have wished to attend did not know about it till too late.</p> <p>Other than one notice in the Peeblesshire News, there appeared to be no poster notices nor leafleting. Hence, many who would have been interested in attending learned of it too late.</p> |  |
| <p>Attendee stated they were favourably impressed by the professionalism and open mindedness of the staff in attendance.</p>   |  |
| <p>Informative and the staff were very helpful. Looking forward to the UK becoming more independent in its energy and food resource and making the best use of renewables. This must also be balanced with the aesthetics of the environment for people and wildlife.</p>  |  |
| <p>Well organised and the information and staff were available to answer questions.</p>  |  |
| <p>Pleased that leaflets were sent out.</p>  |  |
| <p>Happy with the information provided and time scales to allow us to respond.<br/>         Happy with the open approach from SPEN and the willingness to meet on site to discuss our concerns.</p>  |  |