

## Glen Fruin



Parallel 132 kV overhead lines running alongside core path through Glen Fruin

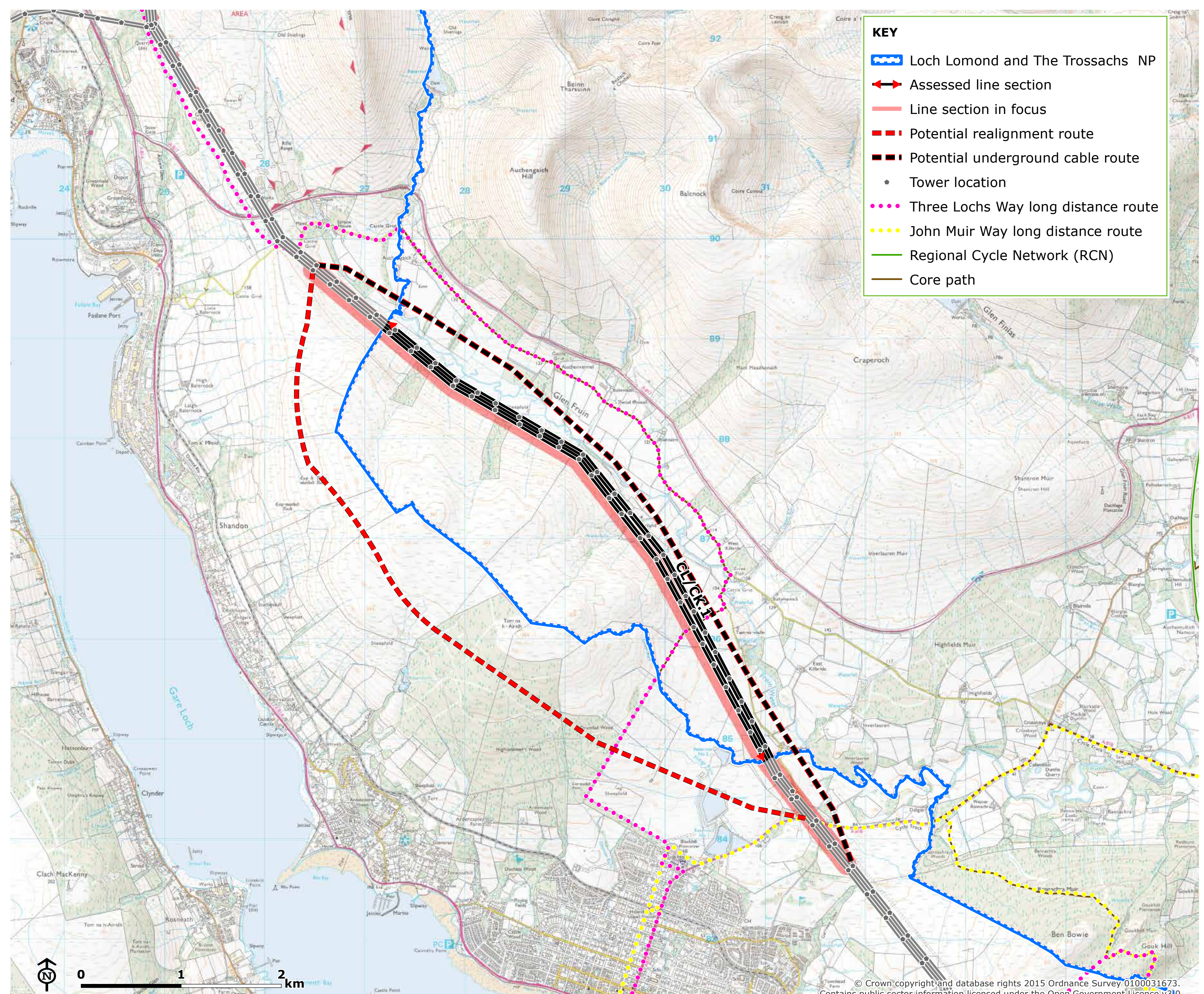
## Landscape and visual context

Two parallel overhead lines run through the southern edge of the National Park at Glen Fruin – a broad valley with a flat floodplain rising to low hills. A minor road providing access to local farmsteads runs along the valley floor, parallel to the meandering Fruin Water. The A817 also runs through the glen, on the upper valley sides. The line crosses pastoral fields which are enclosed by dry stone walls. Traditional farm buildings and groups of mature broadleaved trees are scattered across the farmland. The line skirts the edge of two straight edged conifer plantations at its north western end.

## Landscape and visual impacts

Glen Fruin is an intact farmed upland glen, but does not display many of the special qualities of the wider National Park. The lines are well integrated with the farmed and forested landscape, matching the scale of nearby conifer plantations and groups of mature trees around farmsteads. The lines do however form a key linear feature within the glen, and overall the landscape impact is **Medium**.

The parallel lines are highly visible from the majority of the glen. Visual receptors include local residents, users of the minor road and A817, and walkers on the Three Lochs Way long distance footpath. The line is better integrated in the west, with more skylining and stacking occurring in the east. Overall the visual impact is **High** within the glen.



## Mitigation proposals



## Undergrounding

A

Undergrounding of a section of both overhead lines through the National Park to appropriate terminal tower positions located outside the National Park boundary.

## Re-routeing

B

Re-routeing of 132 kV overhead lines outside of National Park boundary to the south.

## Landscape enhancement

C

Improvements along the Three Lochs Way long-distance path, including an alternative route inland through upper Glen Luss - including landscaping - wide scale planting in the glen, improvement to the appearance of the track.