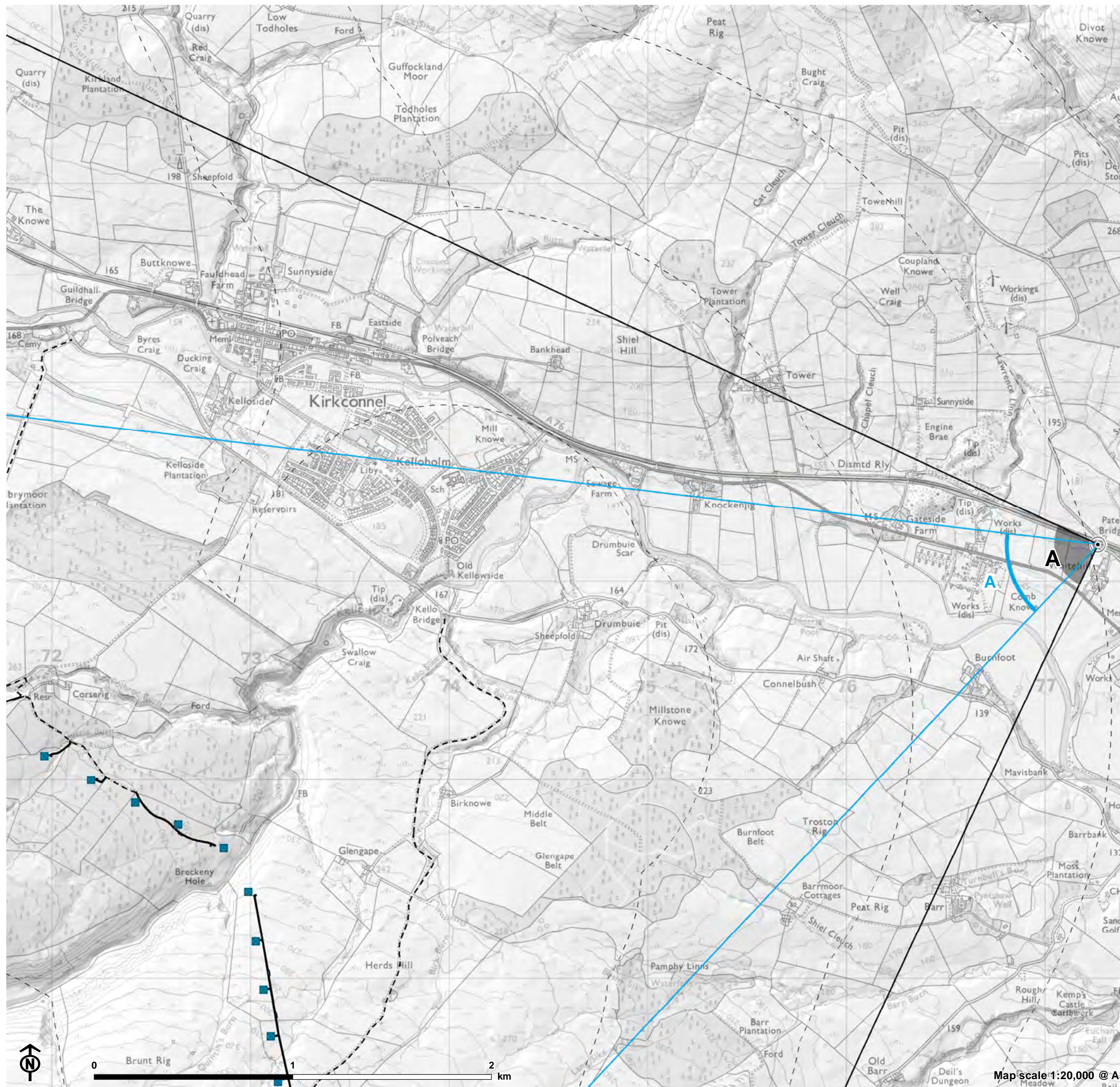


Figure : Viewpoint 9 - Finland Road at Pates Bridge



- Tower (steel lattice tower)

Access to proposed towers and temporary work areas

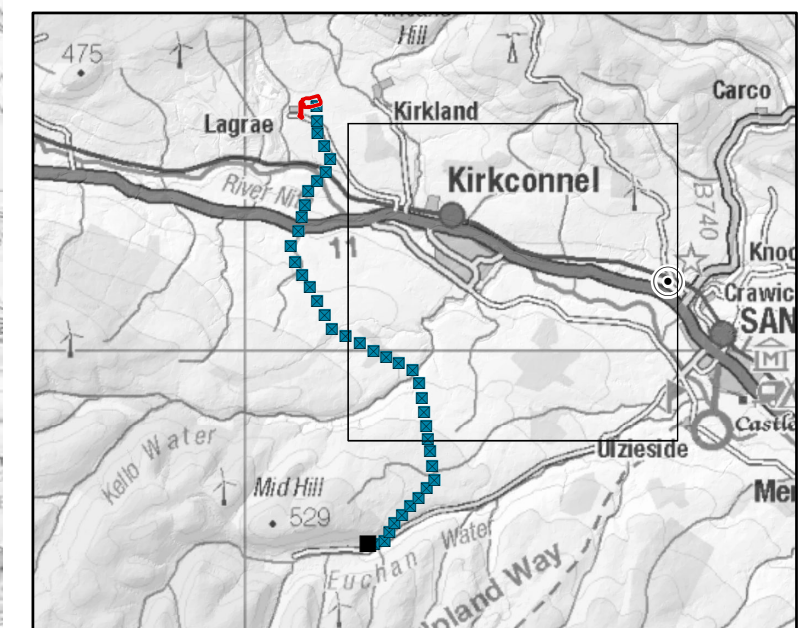
- Existing access track
- New access track

Substations

- Glenmuckloch substation
- ▭ Glenmuckloch substation site boundary
- Glenmuckloch substation new access track
- Glenglass substation and proposed extension (does not form part of this application)

Landscape and visual impact assessment study area

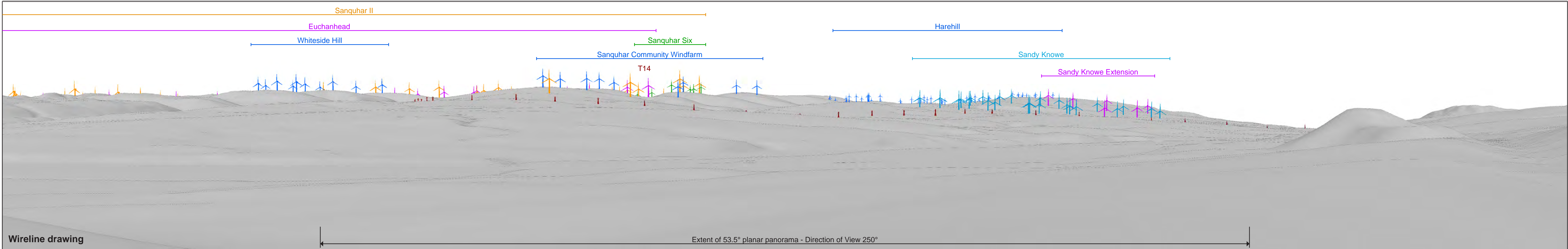
- ▭ LVIA study area (5km)
- ▭ 1km radii
- ∠ 53.5° Field of View
- ∠ 90° Field of View





Baseline photograph

This image provides landscape and visual context only



Wireline drawing



OS reference: 277265 E 611186 N
 AOD: 156.5m
 Direction of view: 250°
 Horizontal field of view: 90° (cylindrical projection)

Vertical field of view: 14.2°
 Principal distance: 522 mm
 Paper size: 841 x 297 mm (half A1)
 Correct printed image size: 820 x 260 mm

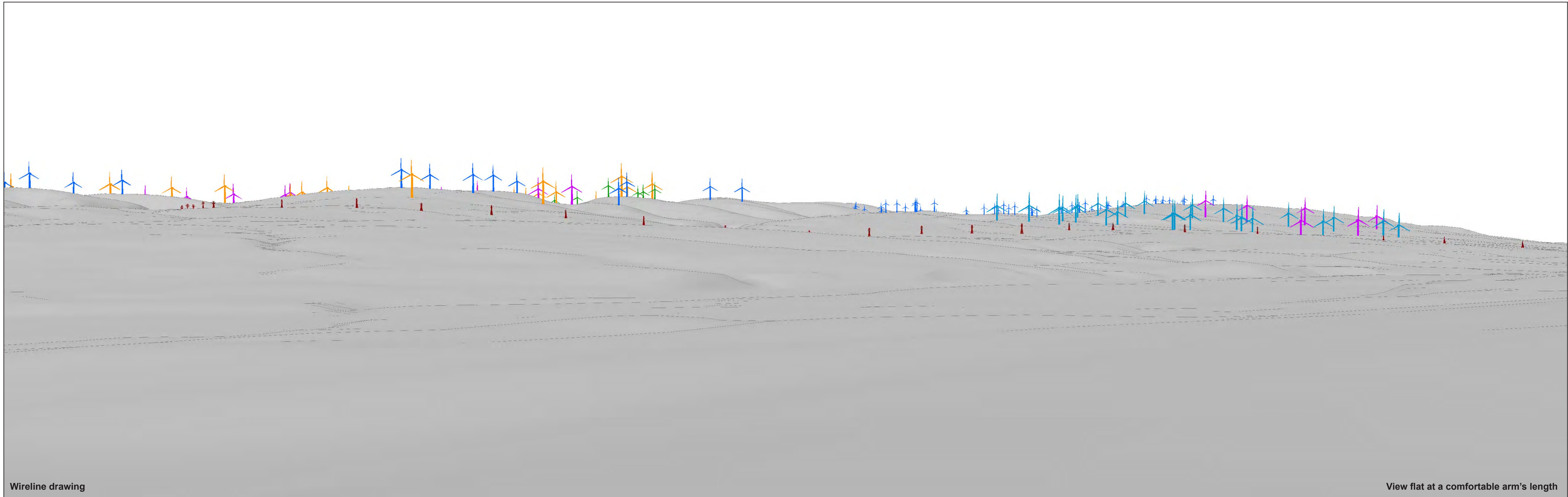
Camera: Nikon D750
 Lens: Nikkor AF 50mm f/1.8D
 Camera height: 1.5 m (above AOD)
 Date and time: 19/07/2020 10:24

Distance to nearest visible proposed tower: 4.76km (T14)
 Line Route key: **New GGRP 132kv OHL**

Wind Farm Developments key (by status):
 Operational
 Consented
 Under Construction
 Application Submitted
 Appeal/PLI

Figure: 6.16a

Viewpoint 9: Finland Road at Pates Bridge



Wireline drawing

View flat at a comfortable arm's length



OS reference: 277265 E 611186 N
 AOD: 156.5m
 Direction of view: 250°
 Horizontal field of view: 53.5° (planar projection)

Vertical field of view: 18.2°
 Principal distance: 812.5 mm
 Paper size: 841 x 297 mm (half A1)
 Correct printed image size: 820 x 260 mm

Camera: Nikon D750
 Lens: Nikkor AF 50mm f/1.8D
 Camera height: 1.5 m (above AOD)
 Date and time: 19/07/2020 10:24

Figure: 6.16b

Viewpoint 9: Finland Road at Pates Bridge



Photomontage

View flat at a comfortable arm's length



OS reference: 277265 E 611186 N
 AOD: 181m
 Direction of view: 250°
 Horizontal field of view: 53.5° (planar projection)

Vertical field of view: 18.2°
 Principal distance: 812.5 mm
 Paper size: 841 x 297 mm (half A1)
 Correct printed image size: 820 x 260 mm

Camera: Nikon D750
 Lens: Nikkor AF 50mm f/1.8D
 Camera height: 1.5 m (above AOD)
 Date and time: 19/07/2020 10:24

Figure: 6.16c

Viewpoint 9: Finland Road at Pates Bridge