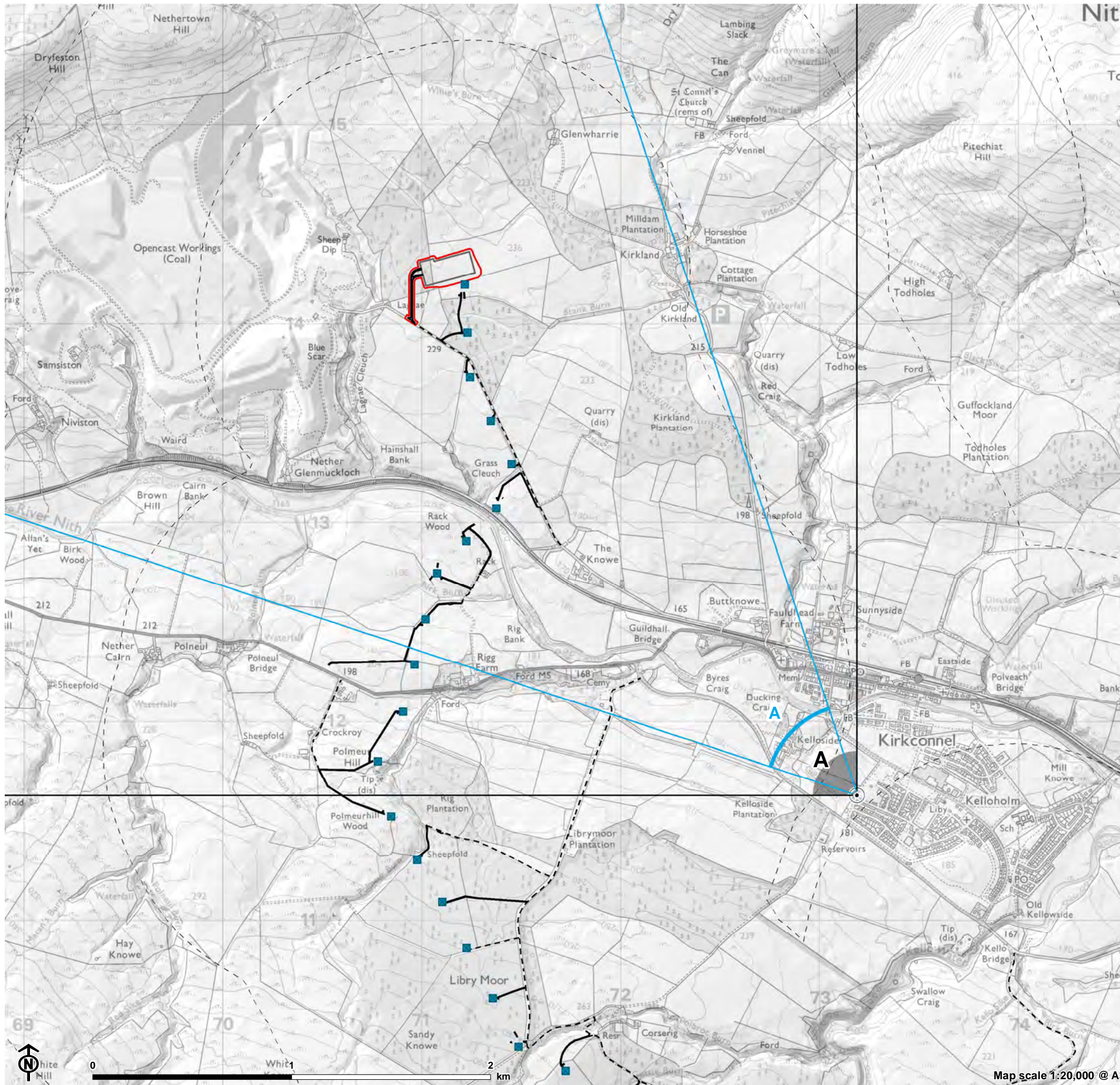


Figure : Viewpoint 5 - South Kelloholm



**Overhead line infrastructure**

- Tower (steel lattice tower)

**Access to proposed towers and temporary work areas**

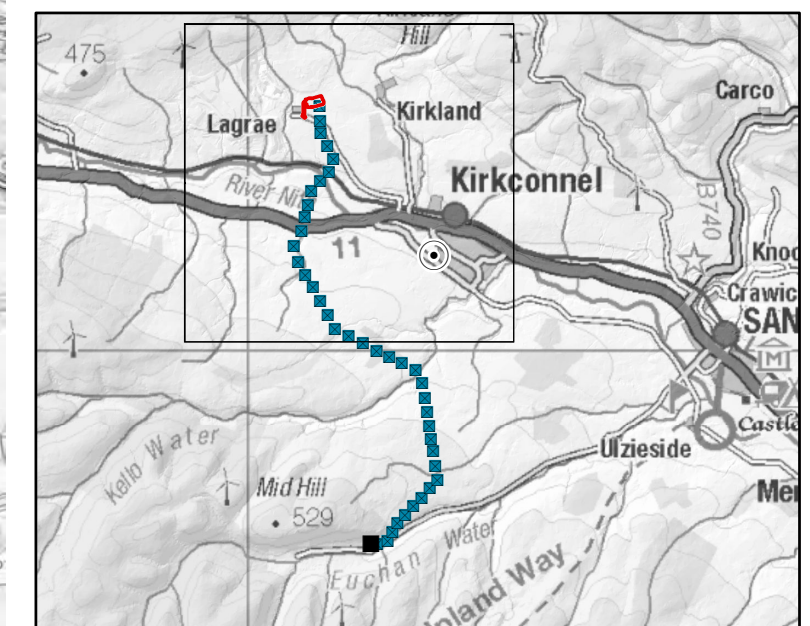
- Existing access track
- New access track

**Substations**

- Glenmuckloch substation
- ▭ Glenmuckloch substation site boundary
- Glenmuckloch substation new access track
- Glenglass substation and proposed extension (does not form part of this application)

**Landscape and visual impact assessment study area**

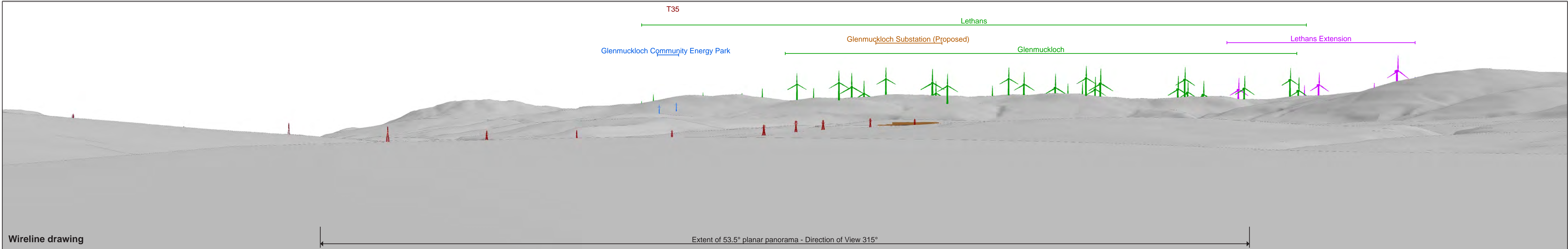
- ▭ LVIA study area (5km)
- ▭ 1km radii
- ∠ 53.5° Field of View
- ∠ 90° Field of View





Baseline photograph

This image provides landscape and visual context only



Wireline drawing

Extent of 53.5° planar panorama - Direction of View 315°



OS reference: 273188 E 611630 N  
 AOD: 175.6m  
 Direction of view: 315°  
 Horizontal field of view: 90° (cylindrical projection)

Vertical field of view: 14.2°  
 Principal distance: 522 mm  
 Paper size: 841 x 297 mm (half A1)  
 Correct printed image size: 820 x 260 mm

Camera: Nikon D750  
 Lens: Nikkor AF 50mm f/1.8D  
 Camera height: 1.5 m (above AOD)  
 Date and time: 19/11/2020 12:03

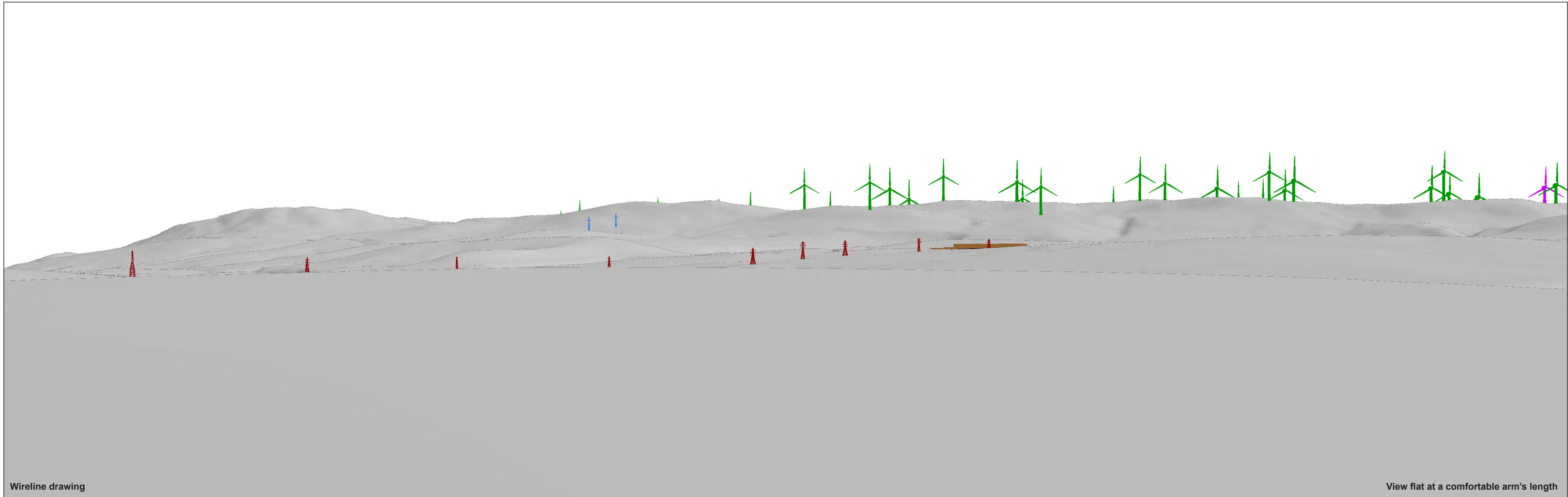
Distance to nearest visible proposed tower: 2.31km (T35)  
 Line Route key: **New GGRP 132kv OHL**

Wind Farm Developments key (by status):

- Operational
- Consented
- Under Construction
- Application Submitted
- Appeal/PLI

Figure: 6.12a

Viewpoint 5: South Kelloholm



Wireline drawing

View flat at a comfortable arm's length



OS reference: 273188 E 611630 N  
 AOD: 175.6m  
 Direction of view: 315°  
 Horizontal field of view: 53.5° (planar projection)

Vertical field of view: 18.2°  
 Principal distance: 812.5 mm  
 Paper size: 841 x 297 mm (half A1)  
 Correct printed image size: 820 x 260 mm

Camera: Nikon D750  
 Lens: Nikkor AF 50mm f/1.8D  
 Camera height: 1.5 m (above AOD)  
 Date and time: 19/11/2020 12:03

Figure: 6.12b

Viewpoint 5: South Kelloholm



Photomontage

View flat at a comfortable arm's length



OS reference:	273188 E 611630 N
AOD:	175.6m
Direction of view:	315°
Horizontal field of view:	53.5° (planar projection)

Vertical field of view:	18.2°
Principal distance:	812.5 mm
Paper size:	841 x 297 mm (half A1)
Correct printed image size:	820 x 260 mm

Camera:	Nikon D750
Lens:	Nikkor AF 50mm f/1.8D
Camera height:	1.5 m (above AOD)
Date and time:	19/11/2020 12:03

Figure: 6.12c

Viewpoint 5: South Kelloholm