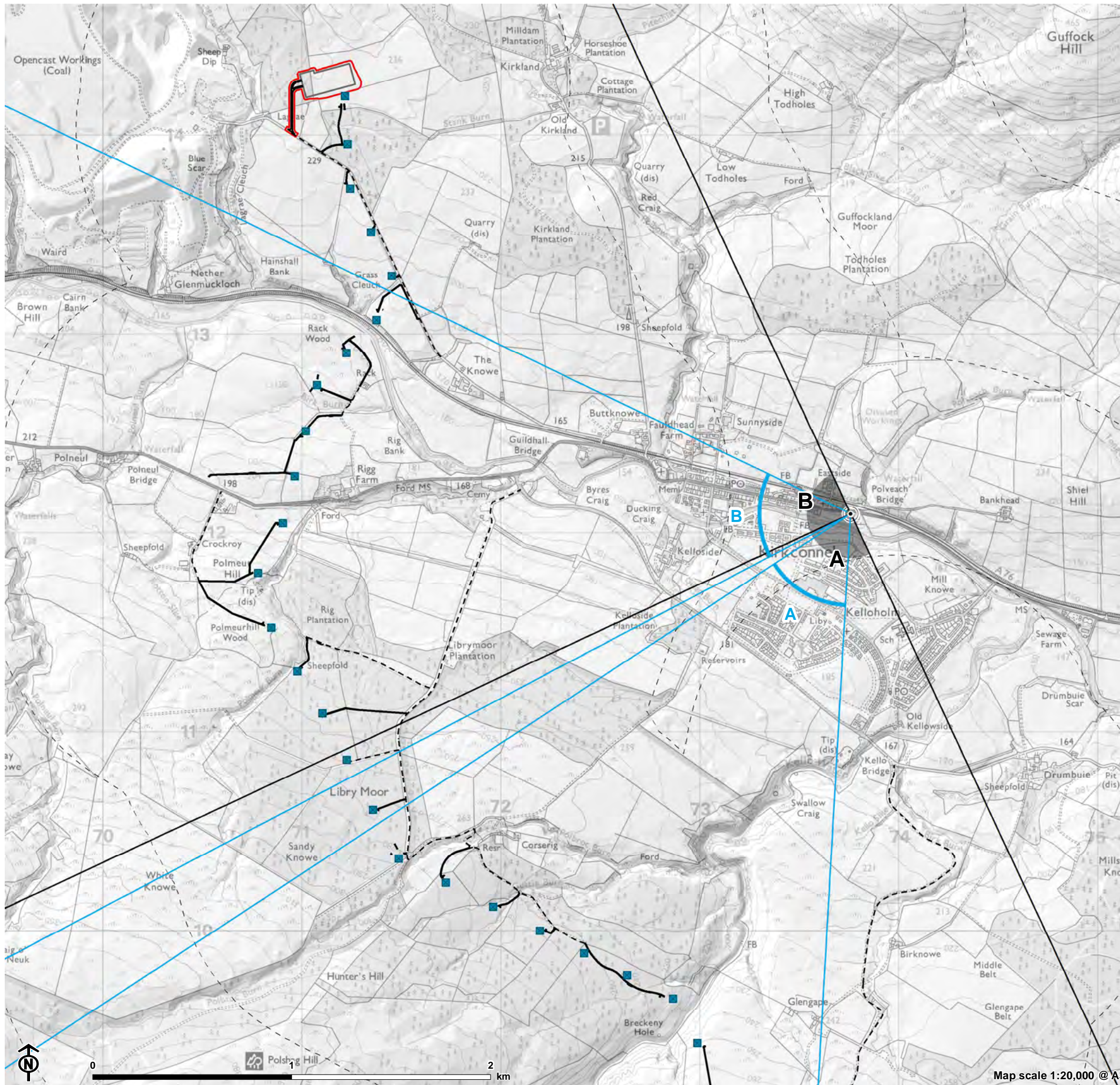


Figure : Viewpoint 4 - Main Street, Kirkconnel



Overhead line infrastructure

- Tower (steel lattice tower)

Access to proposed towers and temporary work areas

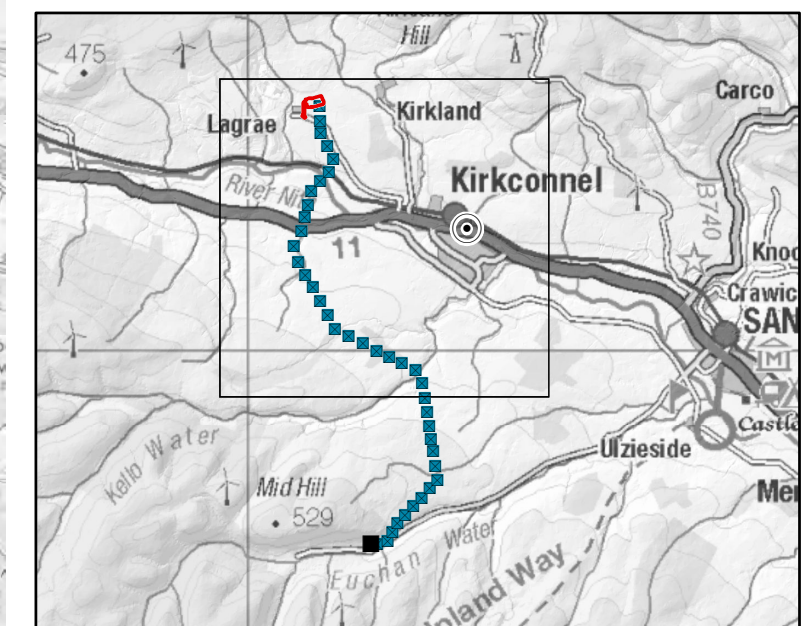
- - - Existing access track
- New access track

Substations

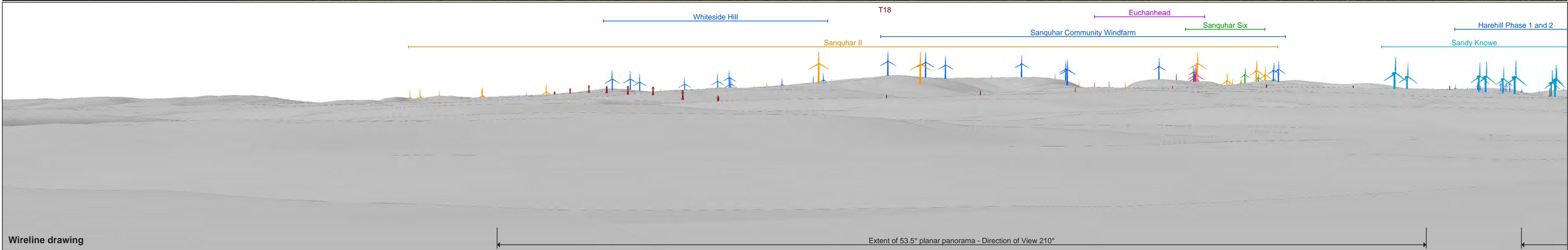
- Glenmuckloch substation
- ▭ Glenmuckloch substation site boundary
- Glenmuckloch substation new access track
- Glenglass substation and proposed extension (does not form part of this application)

Landscape and visual impact assessment study area

- ▭ LVIA study area (5km)
- ▭ 1km radii
- ∠ 53.5° Field of View
- ∠ 90° Field of View



Map scale 1:20,000 @ A3



OS reference: 273758 E 612097 N
 AOD: 152.4m
 Direction of view: 200°
 Horizontal field of view: 90° (cylindrical projection)

Vertical field of view: 14.2°
 Principal distance: 522 mm
 Paper size: 841 x 297 mm (half A1)
 Correct printed image size: 820 x 260 mm

Camera: Nikon D750
 Lens: Nikkor AF 50mm f/1.8D
 Camera height: 1.5 m (above AOD)
 Date and time: 19/07/2022 10:49

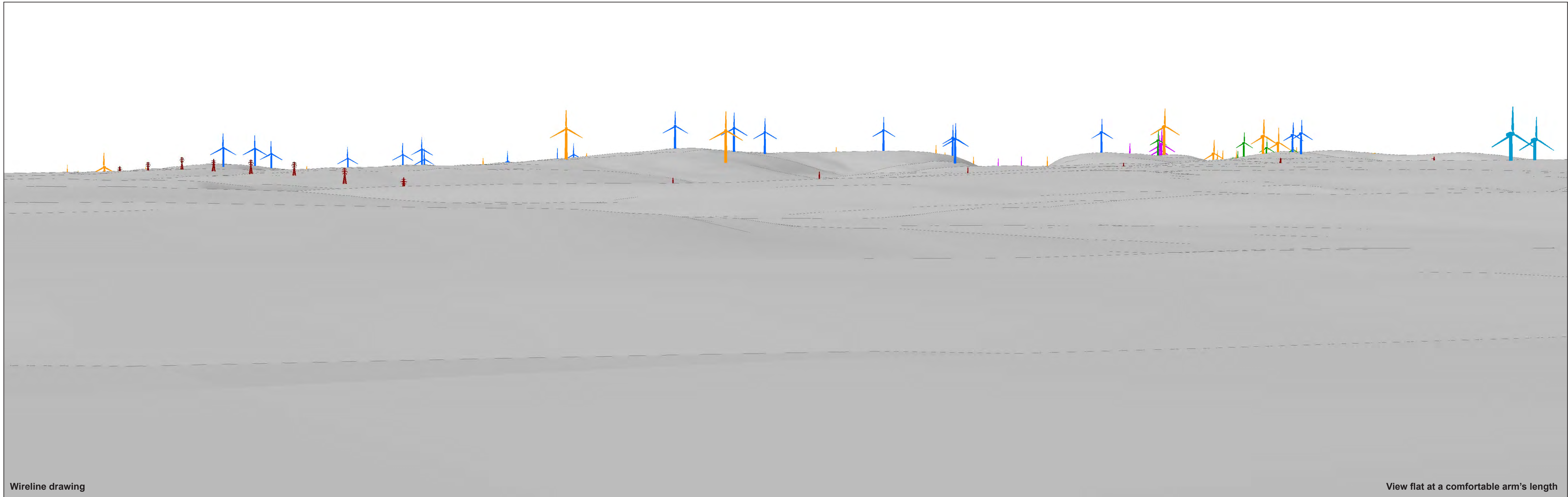
Distance to nearest visible proposed tower: 2.57km (T18)
 Line Route key: **New GGRP 132kv OHL**

Wind Farm Developments key (by status):

Operational
 Consented
 Under Construction
 Application Submitted
 Appeal/PLI

Figure: 6.11a

Viewpoint 4: Main Street Kirkconnel



Wireline drawing

View flat at a comfortable arm's length



OS reference: 273758 E 612097 N
 AOD: 152.4m
 Direction of view: 210°
 Horizontal field of view: 53.5° (planar projection)

Vertical field of view: 18.2°
 Principal distance: 812.5 mm
 Paper size: 841 x 297 mm (half A1)
 Correct printed image size: 820 x 260 mm

Camera: Nikon D750
 Lens: Nikkor AF 50mm f/1.8D
 Camera height: 1.5 m (above AOD)
 Date and time: 19/07/2022 10:49

Figure: 6.11b

Viewpoint 4: Main Street Kirkconnel



Photomontage

View flat at a comfortable arm's length



OS reference:	273758 E 612097 N
AOD:	152.4m
Direction of view:	210°
Horizontal field of view:	53.5° (planar projection)

Vertical field of view:	18.2°
Principal distance:	812.5 mm
Paper size:	841 x 297 mm (half A1)
Correct printed image size:	820 x 260 mm

Camera:	Nikon D750
Lens:	Nikkor AF 50mm f/1.8D
Camera height:	1.5 m (above AOD)
Date and time:	19/07/2022 10:49

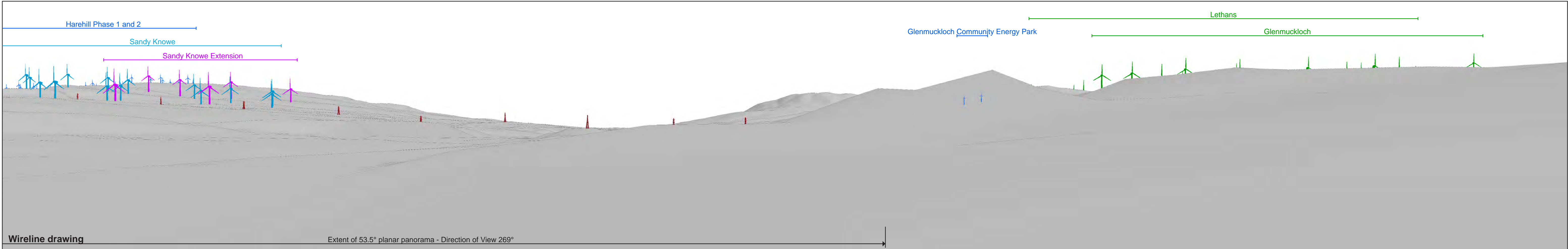
Figure: 6.11c

Viewpoint 4: Main Street Kirkconnel



Baseline photograph

This image provides landscape and visual context only



Wireline drawing

Extent of 53.5° planar panorama - Direction of View 269°



OS reference:	273758 E 612097 N
AOD:	152.4m
Direction of view:	290°
Horizontal field of view:	90° (cylindrical projection)

Vertical field of view:	14.2°
Principal distance:	522 mm
Paper size:	841 x 297 mm (half A1)
Correct printed image size:	820 x 260 mm

Camera:	Nikon D750
Lens:	Nikkor AF 50mm f/1.8D
Camera height:	1.5 m (above AOD)
Date and time:	19/07/2022 10:49

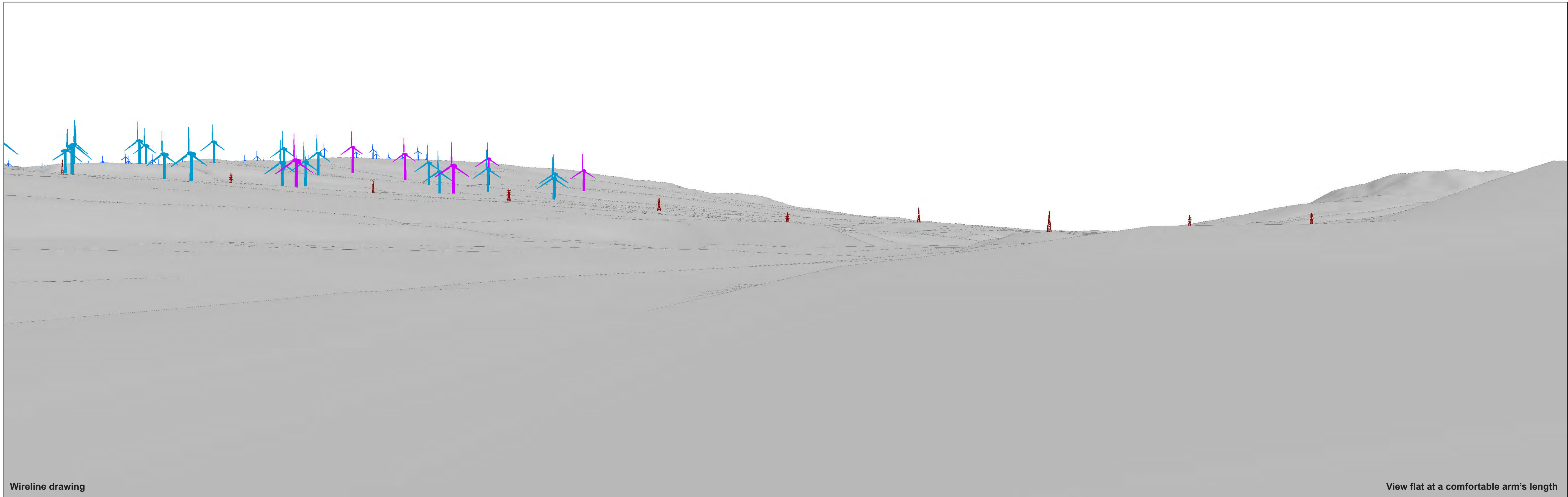
Distance to nearest visible proposed tower:	2.57km (T18)
Line Route key:	New GGRP 132kv OHL

Wind Farm Developments key (by status):

- Operational
- Consented
- Under Construction
- Application Submitted
- Appeal/PLI

Figure: 6.11d

Viewpoint 4: Main Street Kirkcubright



Wireline drawing

View flat at a comfortable arm's length



OS reference: 273758 E 612097 N
 AOD: 152.4m
 Direction of view: 269°
 Horizontal field of view: 53.5° (planar projection)

Vertical field of view: 18.2°
 Principal distance: 812.5 mm
 Paper size: 841 x 297 mm (half A1)
 Correct printed image size: 820 x 260 mm

Camera: Nikon D750
 Lens: Nikkor AF 50mm f/1.8D
 Camera height: 1.5 m (above AOD)
 Date and time: 19/07/2022 10:49

Figure: 6.11e

Viewpoint 4: Main Street Kirkconnel



Photomontage

View flat at a comfortable arm's length



OS reference:	273758 E 612097 N
AOD:	152.4m
Direction of view:	269°
Horizontal field of view:	53.5° (planar projection)

Vertical field of view:	18.2°
Principal distance:	812.5 mm
Paper size:	841 x 297 mm (half A1)
Correct printed image size:	820 x 260 mm

Camera:	Nikon D750
Lens:	Nikkor AF 50mm f/1.8D
Camera height:	1.5 m (above AOD)
Date and time:	19/07/2022 10:49

Figure: 6.11f

Viewpoint 4: Main Street Kirkconell