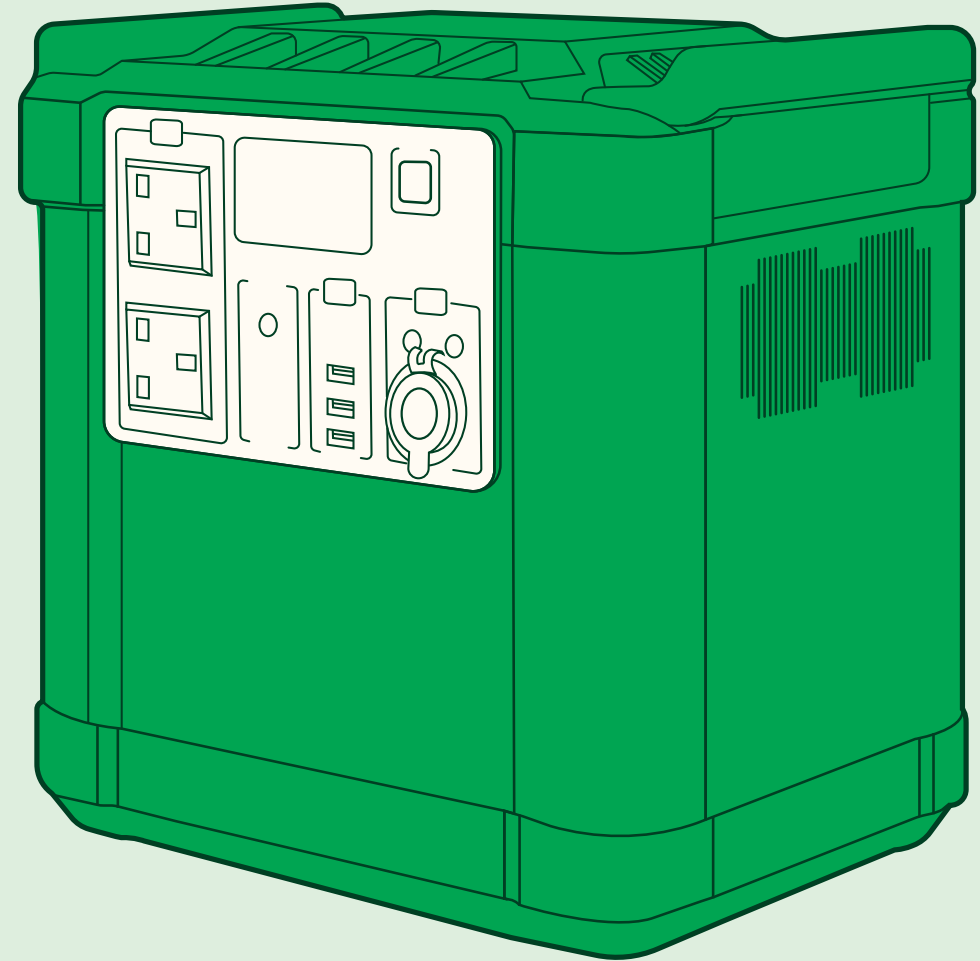


# Battery Powered Generator Guide

A guide to the battery powered generator  
we are providing to your property.



## Who are we?

We are SP Energy Networks, and we own and operate the electricity distribution network in Central and Southern Scotland, Merseyside, Cheshire, North & Mid-Wales, and North Shropshire. We do this through the network of overhead lines and underground cables, which we own and maintain.

No matter who you pay your electricity bill to, we're the people to contact if you have a power cut, need a new or upgraded power connection or spot an issue with our equipment.

We're committed to providing you with a safe and reliable electricity supply. To do this we invest millions every year in upgrading and improving our electricity network. This involves carrying out regular maintenance to our electricity cables, lines, and equipment.

We could be repairing or replacing old or damaged poles, underground cables, or essential refurbishment work. For our engineers to carry out this work safely, we may occasionally need to disconnect your electricity supply for a short period. We understand that power interruptions are inconvenient, and we recognise that certain customers may need some additional support. Therefore, we are providing you with a battery-operated generator, so you can continue to have electricity to your home during this short period of interruption.

## Battery Powered Generator

Our portable battery powered generators provide you with a limited electricity supply while we are carrying out maintenance to our electricity cables, lines, or equipment.

It's a convenient, environmentally friendly solution that delivers the benefits of a traditional generator without the noise, fumes or emissions, or fossil fuel consumption.

There are many benefits to using the battery powered generator compared to a traditional fossil fuel powered generator including:

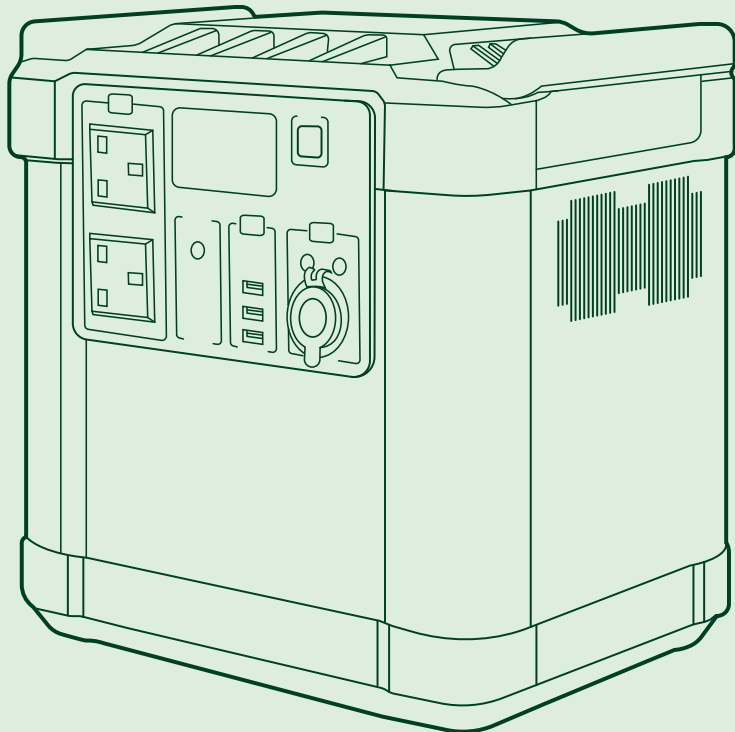
- It weighs less than 20kg, so it can be used quickly and easily within your home.
- By using battery power, it's a greener option, which is better for the environment.
- It's quieter, with less background noise and disturbance to you and your neighbours.
- There are fewer restrictions on where it can be situated and can be operated within your home without the need for ventilation.
- It has been optimised for home working, with a built-in dongle to allow internet access, or can be plugged in your own Wi-Fi router.
- It uses lithium-ion batteries, which are stable and reliable and have built-in safety measures, like overcharge and over-discharge protection.

# What appliances can I use it for?

Here's some information on what type of appliances you can use and how long they can be used for.

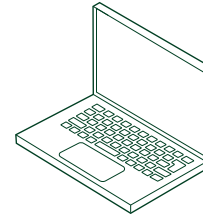
Make sure you discuss usage when we deliver the battery powered generator to your home.

We will provide an instruction card on how to operate the generator and who to contact if you have any issues. You must follow the instructions to ensure it is always used safely.



Care should be taken when plugging in appliances. Timing is indicative only and will vary per appliance.

1



## Home working

1 x laptop, lamp, and speaker – 25 hours

1 x laptop, 23" monitor, lamp, and speaker – 12 hours

1 x PC, 2 x 27" monitors, lamp – 6 hours

2



## Household appliances

Fridge – 12 to 14 hours

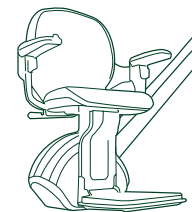
1 litre kettle – 8 to 10 hours

TV – 8 to 10 hours

Speaker – 8 to 10 hours

Electric Blanket – 8 to 10 hours

3



## Specialist equipment

Stairlift – 74 cycles (37x up, 37x down)



## Your feedback is important to us.

We value your feedback and would appreciate you completing our short customer satisfaction survey on collection of your generator.

## FAQs

**Q** What happens if I run out of power?

**A** Please call the number provided and we'll discuss the best options.

**Q** What if I need to move it to plug in another appliance?

**A** The generator will be positioned in an area agreed at set up. However, if this is not suitable it can be repositioned. Please be aware the set is 20kg, so take care if attempting to reposition.

**Q** How many appliances can I plug in at the same time?

**A** There is no limit to the number of devices, but if multiple appliances are connected, this will reduce the battery life of the generator and therefore time available to power your devices.

**Q** How does the Wi-Fi work and will I get a bill if I use it?

**A** There is a password on the top of the set, which you can use to connect your devices to. You will not be charged for Wi-Fi usage.

## How we'll work with you



1. SP Energy Networks team will assess your requirements.



2. We'll identify the type of equipment you need and discuss the best options available with you.



3. We'll deliver the equipment to your property, set it up and advise you how to operate it safely. If you require any support with the equipment please contact us.



4. Once the work has been completed, we'll call back and remove the equipment.



5. We'll ask you to complete a short survey to let us know how it worked for you.

[spenergynetworks.co.uk](https://spenergynetworks.co.uk)

For more information,  
scan the QR code or visit:  
[spenergynetworks.co.uk](https://spenergynetworks.co.uk/battery-powered-generators)  
[/battery-powered-generators](https://spenergynetworks.co.uk/battery-powered-generators)

