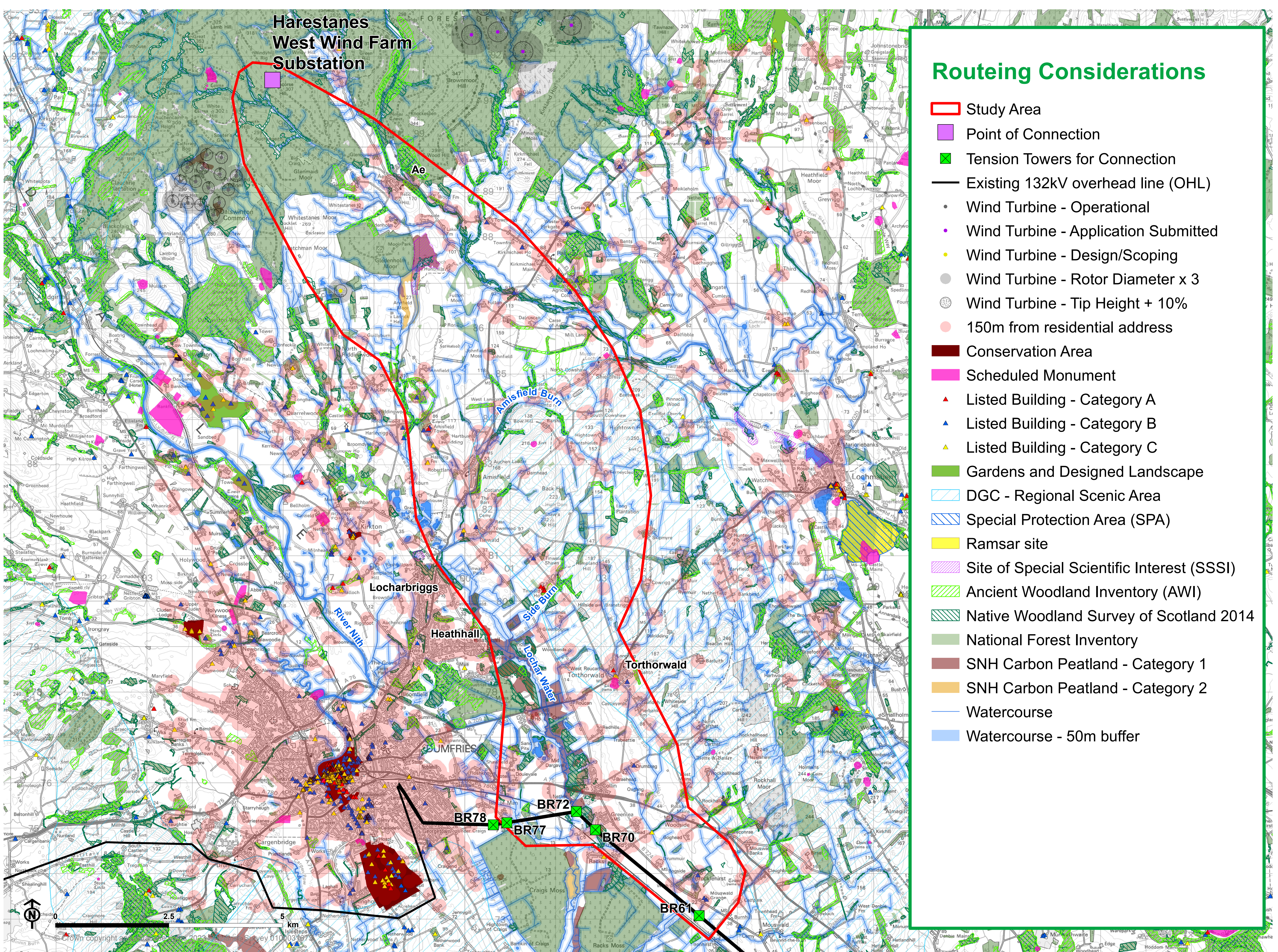


# 8 Routeing Considerations

## Routeing Considerations



Following the identification of the study area, areas/sites of natural and cultural heritage value designated at a national, European or international level (areas of 'highest amenity value') were mapped and avoided where possible in the identification of route options.

These routeing considerations included Sites of Specific Scientific Interest (SSSIs), Areas of Ancient Woodland, Listed Buildings and Scheduled Monuments (SMs) and were avoided where possible in the identification of route options.

The mapping of routeing considerations also included areas that are of regional or local importance and/or are smaller in scale to aid in the appraisal and selection of a preferred route. These routeing considerations included Native Woodland, Class 1 and 2 Priority Peatland Habitat, non-

designated heritage assets, residential properties, wind turbines, existing OHLs, committed developments (planning applications or consented but unbuilt developments) and waterbodies.

The study area also includes consideration of routeing matters such as altitude and slope gradients over which technical limitations would mean a route was unachievable.

Landscape character and landscape designations have also been considered in this process. The Torthorwald Ridge Regional Scenic Area (RSA) covers a large area to the east and south-east of the study area. This local level landscape designation has been considered during the route options appraisal stage.

## Harestanes West Wind Farm 132kV Overhead Line Grid Connection

[www.spenenergynetworks.co.uk](http://www.spenenergynetworks.co.uk)