

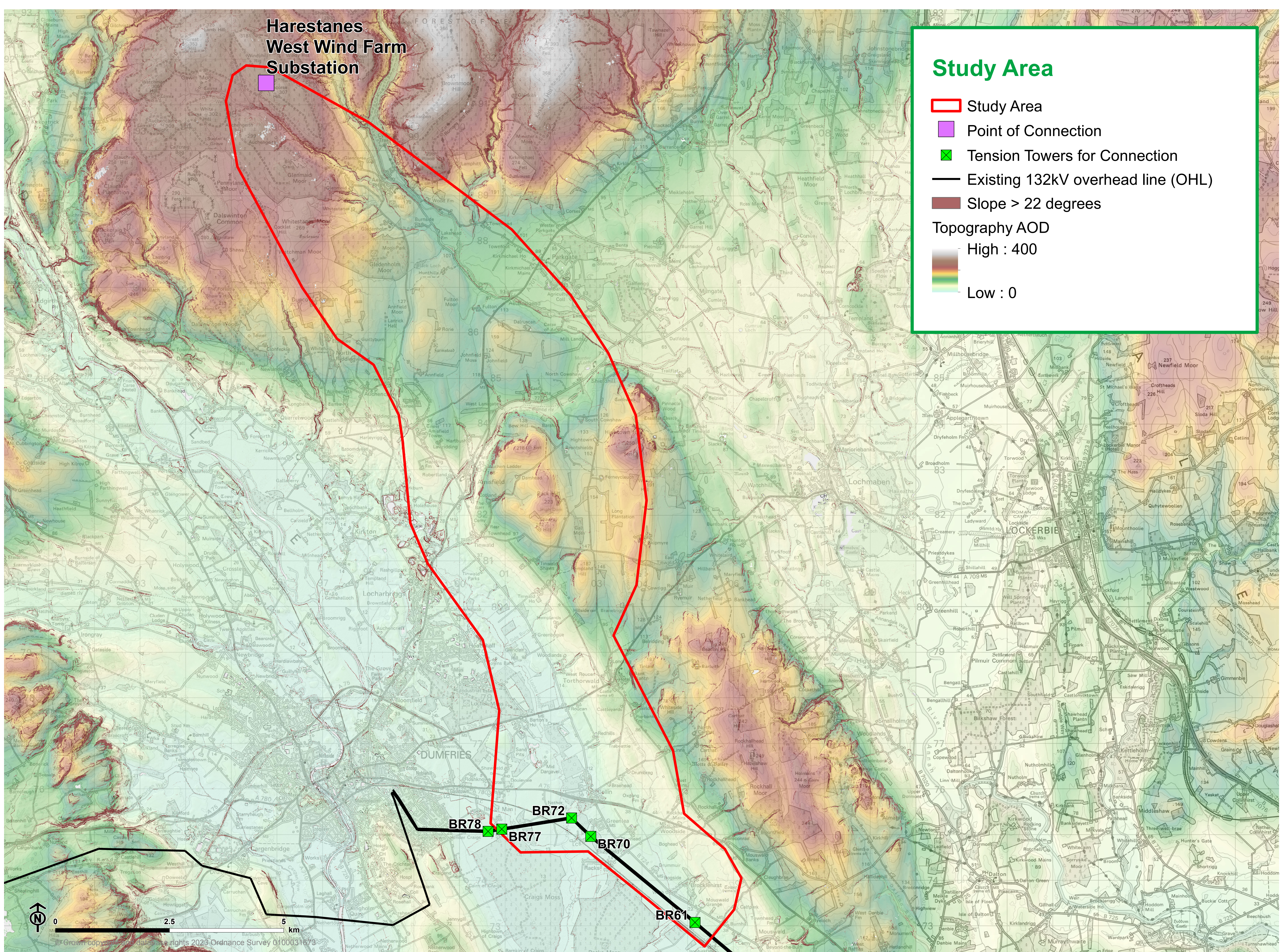
7 The Study Area

The routing methodology follows a linear iterative process of steps. The first step (Step A) involves the identification of a study area, which is large enough to accommodate all likely route options, taking account of the technical requirements (i.e. connection points) and factors such as topography.

The study area covers the area between the Forest of Ae to the north; Shieldhill to the east; the eastern extents and land to the south-east of Dumfries to the south; and Kirkton to the west. The study area covers an area of approximately 7,853 ha and is entirely contained within the Dumfries and Galloway Council area. Much

of the study area is relatively rural in nature, comprising agricultural land, with hedgerows, and interspersed with areas of woodland and blocks of coniferous forest. There are a number of small settlements across the study area including the Village of Ae to the north; Amisfield, Tinwald and Torthorwald, on the western flank of the Torthorwald Ridge to the east of the study area; and Locharbriggs and Kirkton on the eastern side of Nithsdale to the west of the study area. The southern extents of the study area display a denser settlement pattern, being located on the eastern fringes of the town of Dumfries.

Study Area



Harestanes West Wind Farm 132kV Overhead Line Grid Connection

www.spenenergynetworks.co.uk